

GENERAL NOTES

1. ALL 8" WATER MAINS SHALL BE P.V.C. CLASS "200" WATER PIPE. ALL 12" WATER MAINS SHALL BE D.I. CLASS "B1" WATER PIPE.
2. ALL WATER MAINS SHALL HAVE A MINIMUM COVER BELOW FINISHED GRADES AS FOLLOWS: 8"-48", 12"-60", OR AS REQUIRED TO CLEAR OTHER UTILITIES.
3. EXTEND WATER SERVICES AND SANITARY SEWER LATERALS 2' BEYOND PROPOSED CURBS AND WALKS.
4. WATER AND SANITARY SEWER EASEMENTS SHALL ALSO INCLUDE ADDITIONAL AREA OF WORKING SPACE FOR CONSTRUCTION AND MAINTENANCE OF THE SYSTEMS. ADDITIONAL EASEMENT AREA IS ALSO CONVEYED FOR INSTALLATION AND MAINTENANCE OF MANHOLES, CLEANOUTS, FIRE HYDRANTS, WATER SERVICES FROM THE MAIN TO AND INCLUDING THE METER BOXES, SEWER LATERALS FROM THE MAIN TO THE CURB OR PAVEMENT LINE, AND THE DESCRIPTIONS OF SUCH ADDITIONAL EASEMENTS HEREIN GRANTED SHALL BE DETERMINED BY THEIR LOCATIONS AS INSTALLED.
5. ALL WATER SERVICES SHALL BE COPPER AND LOCATED AS SHOWN. SIZED AND REFERENCED AS FOLLOWS: "a" = 2", "b" = 2".
6. ALL SANITARY SEWER LATERALS SHALL BE LOCATED AS SHOWN. SIZED AND REFERENCED AS FOLLOWS: "p" = 6".
7. FIRE HYDRANTS TO BE MUELLER CENTURION.

DESIGN *G. W. Findley* DATE 10-1-81
 COOK CONSULTANTS, INC. ENGINEERS
 R.O.W. APPROVED *Robert F. Thrush* DATE 12-21-81
 ENGINEER OF DESIGN - DALLAS WATER UTILITIES DEPT.
 CONTRACT NO. 81-529-P&B1-530-P-A-B&J CONST. CO. - 12-17-81

Dondi Properties Inc. Sept. 16, 1981
 Strip No. I
 10' x Watermain easmt.
 N66°10'19"E 157.22'
 N40°35'00"E 220.00'
 Strip No. II
 S 58°10'00"W 30.00'
 S 31°50'00"E 4.00'
 N 58°10'00"E 31.68'
 TEMP. WORK SPACE GRANTED
 SPECIAL CONDITION
 D.O. 812830 P. 992
 Vol. 81220 2-4-81 11-11-81

BM ~ Top of fire hydrant near SW property corner. Elev. = 608.77.
 BM ~ R.R. Spike in power pole @ SW property corner. Elev. = 610.45.

1. CHANGE 12" WAT. TO D.I. CLASS "B1"
 2. ADD 2" WATER SERVICE
 3. CHANGE LOCATION 8" SAN. SWR.
- DESIGN *G. W. Findley* DATE 1-7-82
 COOK CONS. INC. ENGRS.
 R.O.W. APPROVED *Robert F. Thrush* DATE 1-7-82
 ENGR. OF DESIGN - DALLAS WAT. UTILITIES
- DESIGN *G. W. Findley* DATE 4-22-82
 COOK CONS. INC. ENGRS.
 R.O.W. APPROVED *Robert F. Thrush* DATE 5-13-82
 ENGR. OF DESIGN - DALLAS WAT. UTIL.

78

WATER & SANITARY SEWER PLAN

MONTFORT OFFICE PARK
 DALLAS WATER UTILITIES DEPT.
 CITY OF ADDISON, TEXAS

DESIGN	DRAWN	DATE	SCALE	NOTES	FILE	NO.
M.K.	M.K.	10/1/81	1" = 30'		411Q	1960

COOK CONSULTANTS, INC.
 ENGINEERS PLANNERS ARCHITECTS
 4815 NORTH CENTRAL EXPRESSWAY, SUITE 1000, DALLAS, TEXAS 75246 (972) 354-7000

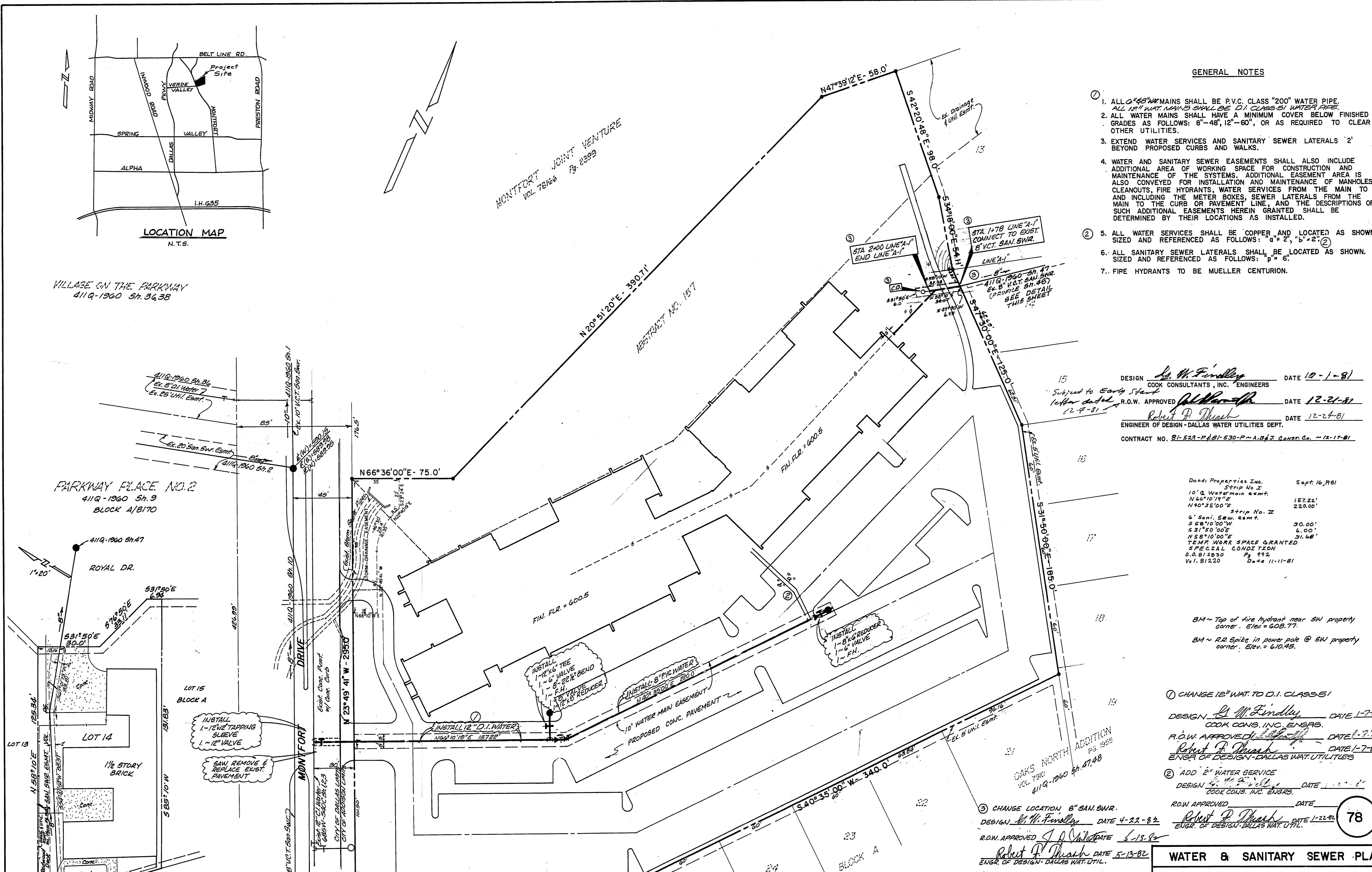
G. W. Findley
 PROJECT NO. 60293-1

LOCATION MAP
 N.T.S.

VILLAGE ON THE PARKWAY
 411Q-1960 Sh. 3638

PARKWAY PLACE NO. 2
 411Q-1960 Sh. 9
 BLOCK A/1870

LARRY C. & JULIE TOOKER Apr. 15-82
 AN IRREGULARLY SHAPED SANI SEWER ESMT
 13.16' x 33.18' x 88.37' x 13.81' x 125.34'
 LOCATED AT WEST B.O.W. LINE OF
 ROYAL CT. DR. & NE. CORNER OF LOT 14
 BLOCK A OF NORTH OAK ADDN. ADDISON, TX.
 TEMPORARY WORKING SPACE GRANTED
 C.O.



MONTFORT JOINT VENTURE
 VOL. 78126 Pg. 2329

ABSTRACT NO. 157

OAKS NORTH ADDITION
 VOL. 7910
 411Q-1960 Sh. 4748

MONTFORT OFFICE PARK
 VOL. 51131 Pg. 210