

BLK. 8170

DALLAS INDEPENDENT SCHOOL DISTRICT

BLK. A/8170

PARKWAY PLACE NO. 2

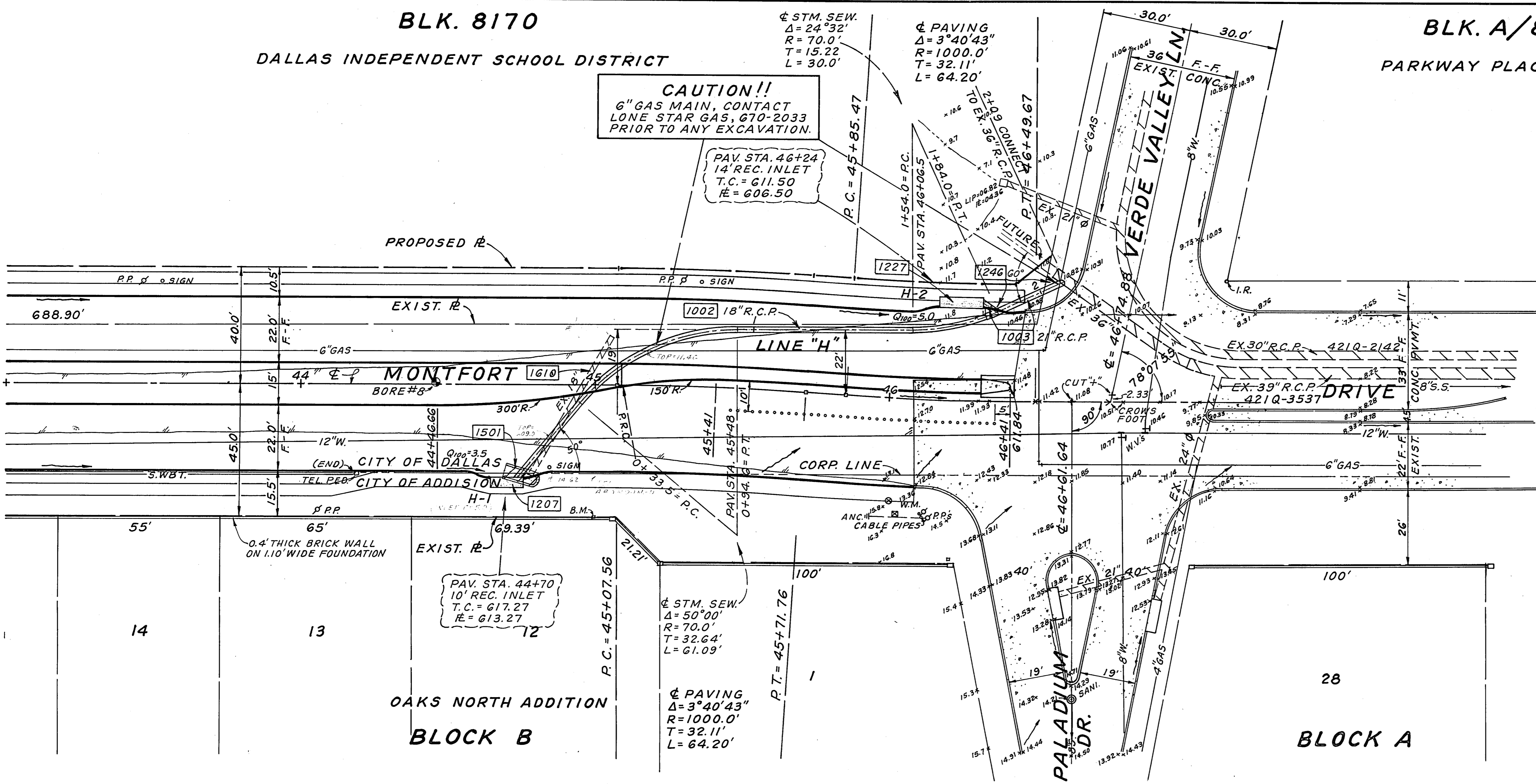
CAUTION!!
6" GAS MAIN, CONTACT
LONE STAR GAS, 670-2033
PRIOR TO ANY EXCAVATION.

PAV. STA. 46+24
14' REC. INLET
T.C. = 611.50
E = 606.50

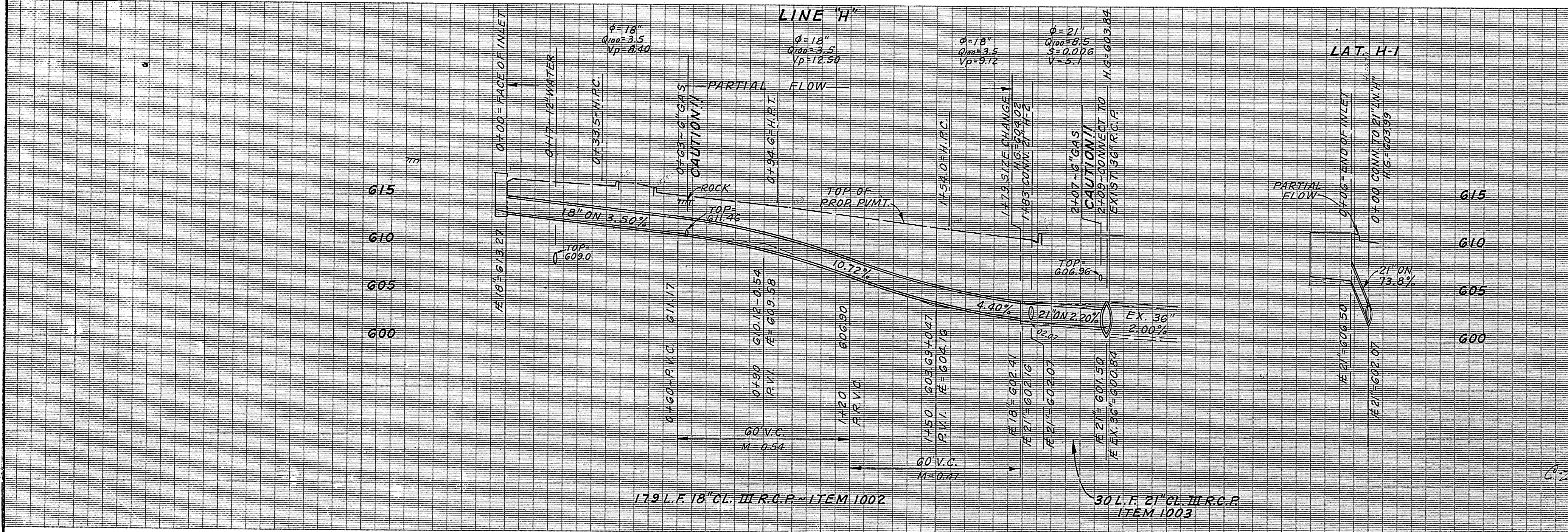
PAV. STA. 44+70
10' REC. INLET
T.C. = 617.27
E = 613.27

STM. SEW.
Δ = 50°00'
R = 70.0'
T = 32.64'
L = 61.09'

PAVING
Δ = 3°40'43"
R = 1000.0'
T = 32.11'
L = 64.20'



BENCH MARKS:
"□" CUT ON CONC. FOUNDATION OF BRICK
WALL, 45' EAST OF STA. 45+00 OF
MONTFORT DR. (160'± S. OF PALADIUM DR.)
ELEV. = 619.88
"□" CUT ON CONC. CURB AT CURB RETURN
28'± EAST OF MONTFORT DR. & NORTH
SIDE OF PALADIUM DR. ~ ELEV. = 611.16



STORM DRAINAGE IMPROVEMENTS							
MONTFORT DRIVE							
FROM PRESTON OAKS RD. TO VERDE VALLEY LN.							
DEPARTMENT OF PUBLIC WORKS							
CITY OF DALLAS, TEXAS							
DESIGN	DRAWN	DATE	SCALE	NOTES	FILE	NO.	
MOON	S.J.	JAN. 1984	H: 1"=20' V: 1"=6'	J.B.	421Q	3874	

10
10