

SMIRL SUBDIVISION  
LOT 1

MILTON E.  
MEDANIEL

WATSON & TAYLOR REALTY CO.

SOL MINZER ET AL

BLK. 7009

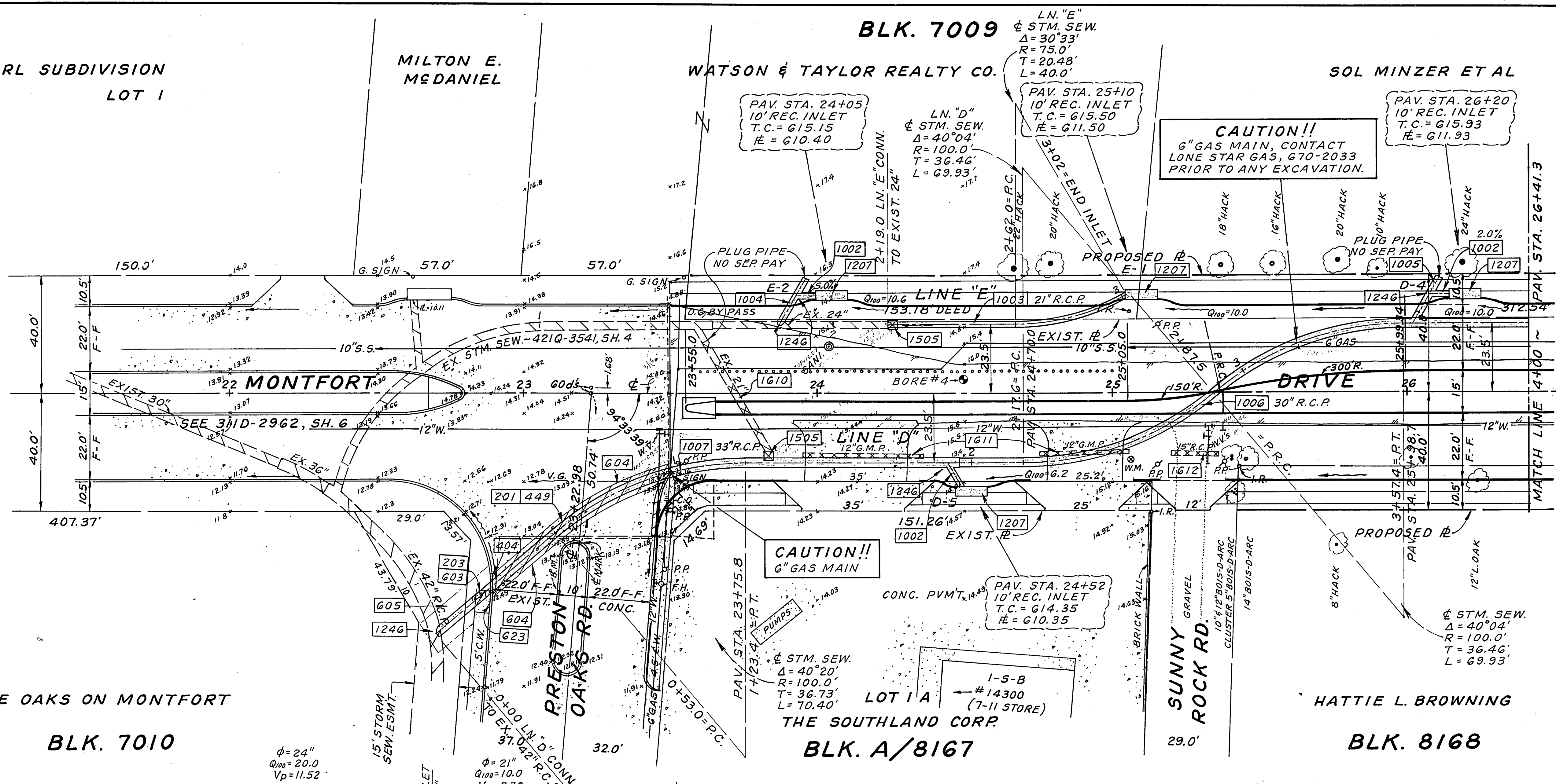
LN. "E"  
STM. SEW.  
Δ = 30°33'  
R = 75.0'  
T = 20.48'  
L = 40.0'

PAV. STA. 24+05  
10' REC. INLET  
T.C. = 615.15  
E = 610.40

PAV. STA. 25+10  
10' REC. INLET  
T.C. = 615.50  
E = 611.50

PAV. STA. 26+20  
10' REC. INLET  
T.C. = 615.93  
E = 611.93

**CAUTION!!**  
6" GAS MAIN, CONTACT  
LONE STAR GAS, 670-2033  
PRIOR TO ANY EXCAVATION.



THE OAKS ON MONTFORT

BLK. 7010

LOT 1 A  
THE SOUTHLAND CORP.

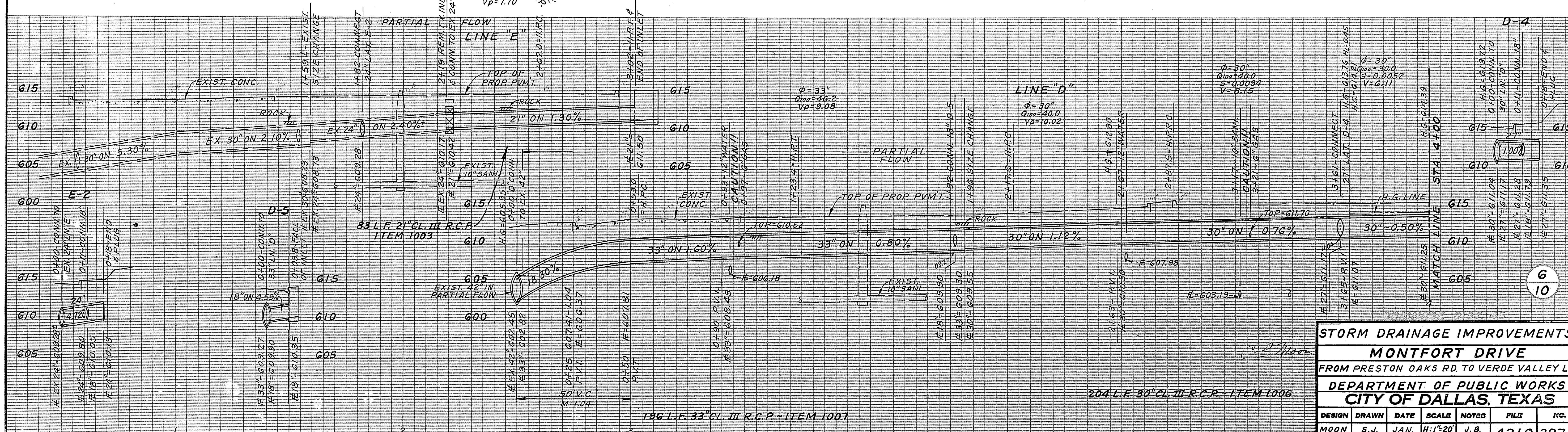
BLK. A/8167

HATTIE L. BROWNING

BLK. 8168

BENCH MARK:

"□" CUT ON SOUTH MEDIAN CURB IN  
PRESTON OAKS RD., 68' EAST OF E STA.  
23+12 ON MONTFORT DR. ~ ELEV. = 613.42



STORM DRAINAGE IMPROVEMENTS						
MONTFORT DRIVE						
FROM PRESTON OAKS RD. TO VERDE VALLEY LN.						
DEPARTMENT OF PUBLIC WORKS						
CITY OF DALLAS, TEXAS						
DESIGN	DRAWN	DATE	SCALE	NOTES	FILE	NO.
MOON	S. J.	JAN. 1984	H: 1"=20' V: 1"=6'	J. B.	421Q	3874