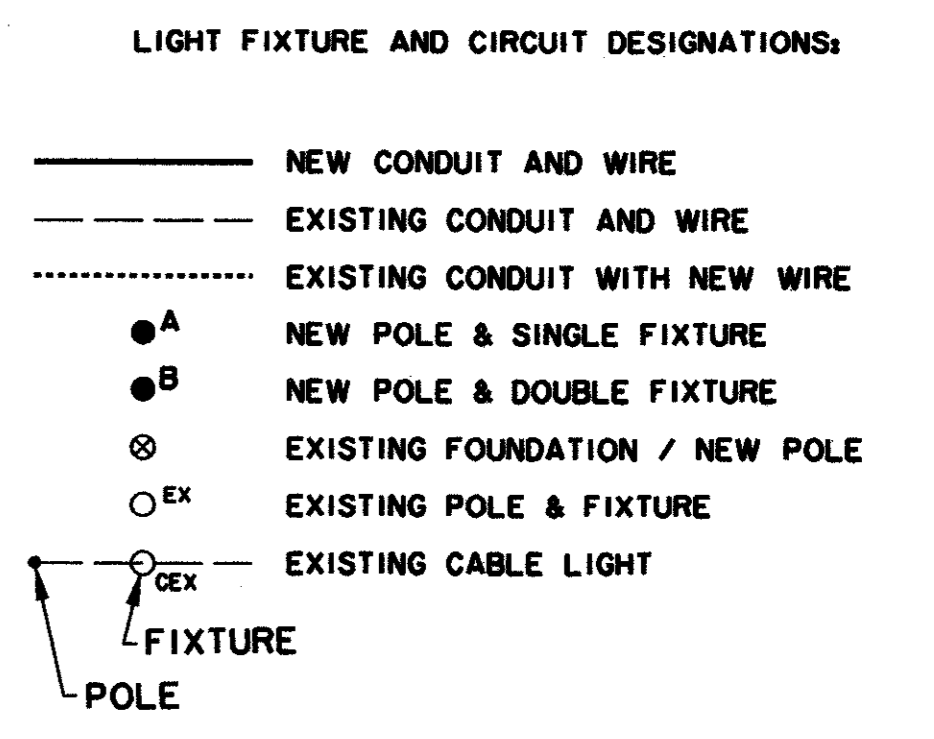


GENERAL NOTES		CIRCUIT SCHEDULE					
NUMBER	DESCRIPTION	CONDUIT DESIGNATION	CIRCUIT NUMBERS	PANELBOARD	CIRCUIT BREAKER	CONDUCTORS	
1	THE TERM "PROVIDE" SHALL MEAN FOR THE CONTRACTOR TO FURNISH AND INSTALL A COMPLETE OPERATING SYSTEM.	(R1) EX. TWO-2" CONDUITS (ONE SPARE)	R-1, 3 R-5, 7 R-9, 11 R-2, 4 R-6, 8 R-10, 12	PANEL "R1" 100 AMP M.C.B. 120/240 VOLT 1 PHASE, 3 WIRE W/ GROUND 10'-20A-2P C.B. 2-20A-1P C.B.	20 AMP, 2 POLE	(2) #8 SPACE	
KEY NOTES							
DESCRIPTION							
1	EXISTING TU ELECTRIC TRANSFORMER WITH SINGLE PHASE TRANSFORMER FOR STREET LIGHTING.						
2	EXISTING 120/240 VOLT, 1 PHASE, 3 WIRE, W/GND PANELBOARD WITH MAIN CONTACTOR, CONNECT TO ELECTRIC UTILITY AT DESIGNATED SERVICE POINTS.						
3	STREET LIGHT FIXTURE TYPE A. INSTALL CONCRETE BASE, POLE, FIXTURE AND CONNECTIONS. REFER TO SHEET 9 FOR POLE BASE DETAIL.						
4	ROUTE CIRCUITRY THROUGH CONDUITS AND PULL BOXES. MAKE SPLICE IN MAIN FEEDERS USING HIGH COMPRESSION SPLICE FITTING.						
5	EXISTING PHOTO ELECTRIC CELL ON TOP OF POLE FACING NORTH.						
6	CAP CONDUIT FOR FUTURE EXTENSION.						
ELECTRICAL LEGEND							
SYMBOL	DESCRIPTION						
[Line]	2" CONDUIT FOR STREET LIGHTING CIRCUITS.						
[Box]	PULL BOX; (12" W x 12" D x 18" L).						
(R1)	CONDUIT IDENTIFICATION FOR NEW MAIN FEEDERS.						
R-2,4	CIRCUIT NUMBERS FROM PANELS AT SERVICE POINTS.						
[Circle]	STREET LIGHT FIXTURE TYPE 'A' OR 'B' (AS NOTED).						

NOTES TO CIRCUIT SCHEDULE:

- MAINTAIN ABOVE CONDUCTORS THROUGHOUT ALL PULL BOXES.
- CONDUIT DESIGNATIONS ABOVE ARE ALL 2" CONDUITS.



GENERAL ELECTRICAL NOTES FOR THIS PROJECT:

- LOCATIONS OF ALL LIGHT FIXTURES, PULL BOXES AND ROUTING OF CONDUITS SHALL BE IDENTIFIED ON THE SITE BY STAKES AND PAINT PRIOR TO ANY EXCAVATION. REQUIREMENTS FOR CONDUIT ROUTING ARE PROVIDED ON DRAWINGS AND SPECIFICATIONS. OWNER WILL REVIEW AT THE SITE AND PROVIDE DIRECTIONS ON FIELD ADJUSTMENTS OF UP TO 10 FOOT FROM LOCATIONS SHOWN ON THE DRAWINGS.
- CONTRACTOR SHALL COORDINATE STORM WATER, WASTEWATER, WATER, IRRIGATION AND ELECTRICAL CONDUIT TRENCHING AND INSTALLATION TO MINIMIZE THE DISTURBANCE OF EXISTING TREE ROOTS.
- ALL PULL BOXES ARE 12" X 18" X 12" DEEP CONCRETE BOX WITH BOLT ON CONCRETE COVER SIMILAR TO T.U. SUBSURFACE SECONDARY BOX. INSTALL CONDUITS NEAR CORNER OF BOX TO ALLOW CONDUCTORS TO LOOP THROUGH BOX.

LIGHT FIXTURE SCHEDULE					
TYPE	DESCRIPTION	LAMP	MANUFACTURER	CATALOGUE NO.	FINISH
A	CUSTOM STYLE	175 MH	BEGA	9801MH	BLACK
A-POLE	15'-8" ROUND		BEGA	1508HR	BLACK
B	CUSTOM STYLE	175 MH	BEGA	9801MH (2 PER POLE)	BLACK
B-POLE	15'-8" ROUND		BEGA	1508HR	BLACK

- NOTES:**
- PROVIDE REINFORCED CONCRETE BASE, ANCHOR BOLTS AND REQUIRED ACCESSORIES.
 - BID SHALL BE BASED UPON THE ABOVE LISTED FIXTURES TO MATCH PHASE I FIXTURES.
 - PROVIDE MATCHING BASE COVER FOR EACH FIXTURE.
 - ALL FIXTURES ARE 240 VOLT AND REQUIRE DOUBLE FUSING.
 - A CUSTOM HINGED POLE IS REQUIRED FOR FIXTURE TYPE A & B (45° HINGED).
 - REFER TO SPECIFICATIONS FOR ADDITIONAL INFORMATION.
 - FIXTURES TYPE B TO BE INSTALLED 90° APART.

THE SEAL APPEARING THIS DOCUMENT WAS AUTHORIZED BY ANN KATHERINE HUNT, P.E. 33797



DATE	DESCRIPTION	REF. NO.
4/20/01	ISSUED FOR BID	N/A

STREET LIGHT POWER PLAN & DETAILS

MORRIS AVENUE EXTENSION

PUBLIC INFRASTRUCTURE

TOWN OF ADDISON, TEXAS

HUFF - Zellers, Inc.
3131 McKinney Ave., Suite 600, Dallas, TX 75204
Phone (214) 871-3311/Fax (214) 871-0757

DESIGN	DRAWN	APPR.	SCALE	DATE	PROJECT NO.	NO.
HZI	HZI	AH	1"=50'	APR. 2001	01-3000-01	15

No part of this drawing may be reproduced, stored in a retrieval system, or transmitted in any form or by any means, electronic, mechanical, photocopying, recording, or by any information storage and retrieval system, without the prior written permission of the engineer of record.