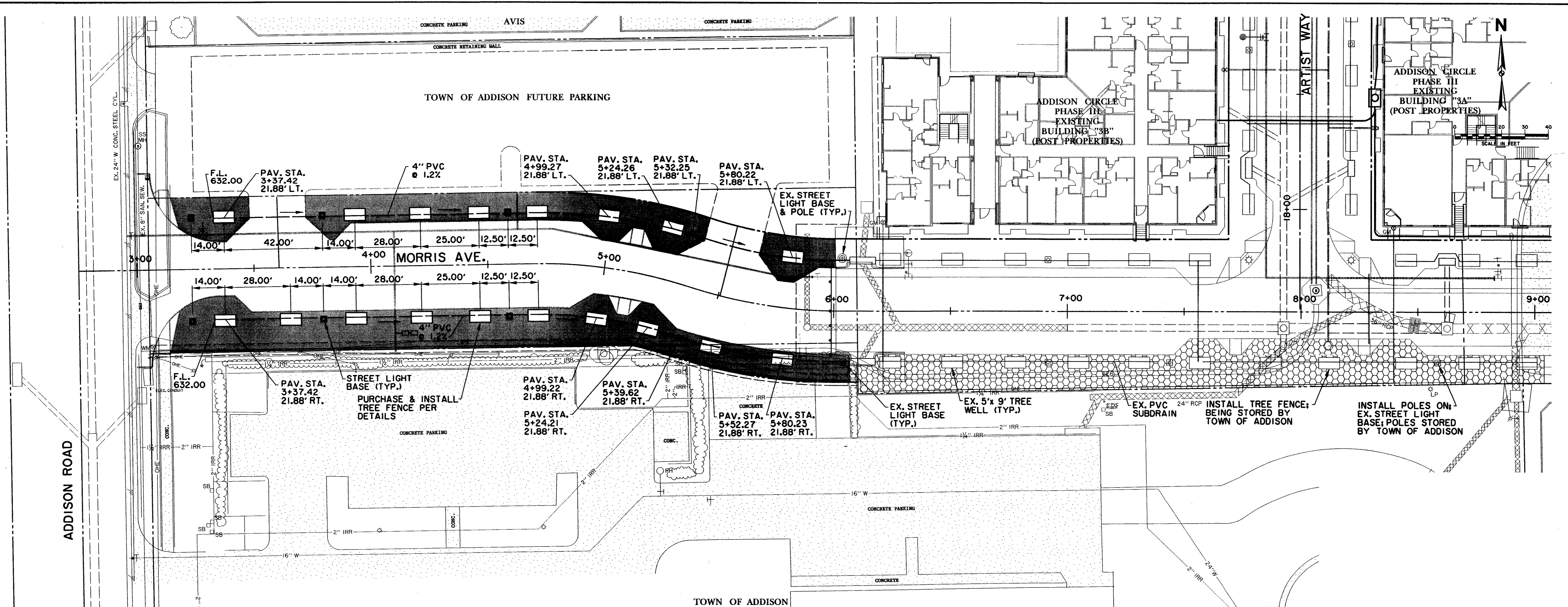


H:\MORRIS\JOB\1-03
 T. MORRISON\JOB\1-03\REVISED\1-03\1-03-01.DWG
 T. MORRISON\JOB\1-03\REVISED\1-03\1-03-02.DWG
 T. MORRISON\JOB\1-03\REVISED\1-03\1-03-03.DWG
 T. MORRISON\JOB\1-03\REVISED\1-03\1-03-04.DWG
 T. MORRISON\JOB\1-03\REVISED\1-03\1-03-05.DWG
 T. MORRISON\JOB\1-03\REVISED\1-03\1-03-06.DWG
 T. MORRISON\JOB\1-03\REVISED\1-03\1-03-07.DWG
 T. MORRISON\JOB\1-03\REVISED\1-03\1-03-08.DWG
 T. MORRISON\JOB\1-03\REVISED\1-03\1-03-09.DWG
 T. MORRISON\JOB\1-03\REVISED\1-03\1-03-10.DWG
 T. MORRISON\JOB\1-03\REVISED\1-03\1-03-11.DWG
 T. MORRISON\JOB\1-03\REVISED\1-03\1-03-12.DWG
 T. MORRISON\JOB\1-03\REVISED\1-03\1-03-13.DWG
 T. MORRISON\JOB\1-03\REVISED\1-03\1-03-14.DWG
 T. MORRISON\JOB\1-03\REVISED\1-03\1-03-15.DWG
 T. MORRISON\JOB\1-03\REVISED\1-03\1-03-16.DWG
 T. MORRISON\JOB\1-03\REVISED\1-03\1-03-17.DWG
 T. MORRISON\JOB\1-03\REVISED\1-03\1-03-18.DWG
 T. MORRISON\JOB\1-03\REVISED\1-03\1-03-19.DWG
 T. MORRISON\JOB\1-03\REVISED\1-03\1-03-20.DWG
 T. MORRISON\JOB\1-03\REVISED\1-03\1-03-21.DWG
 T. MORRISON\JOB\1-03\REVISED\1-03\1-03-22.DWG
 T. MORRISON\JOB\1-03\REVISED\1-03\1-03-23.DWG
 T. MORRISON\JOB\1-03\REVISED\1-03\1-03-24.DWG
 T. MORRISON\JOB\1-03\REVISED\1-03\1-03-25.DWG
 T. MORRISON\JOB\1-03\REVISED\1-03\1-03-26.DWG
 T. MORRISON\JOB\1-03\REVISED\1-03\1-03-27.DWG
 T. MORRISON\JOB\1-03\REVISED\1-03\1-03-28.DWG
 T. MORRISON\JOB\1-03\REVISED\1-03\1-03-29.DWG
 T. MORRISON\JOB\1-03\REVISED\1-03\1-03-30.DWG
 T. MORRISON\JOB\1-03\REVISED\1-03\1-03-31.DWG
 T. MORRISON\JOB\1-03\REVISED\1-03\1-03-32.DWG
 T. MORRISON\JOB\1-03\REVISED\1-03\1-03-33.DWG
 T. MORRISON\JOB\1-03\REVISED\1-03\1-03-34.DWG
 T. MORRISON\JOB\1-03\REVISED\1-03\1-03-35.DWG
 T. MORRISON\JOB\1-03\REVISED\1-03\1-03-36.DWG
 T. MORRISON\JOB\1-03\REVISED\1-03\1-03-37.DWG
 T. MORRISON\JOB\1-03\REVISED\1-03\1-03-38.DWG
 T. MORRISON\JOB\1-03\REVISED\1-03\1-03-39.DWG
 T. MORRISON\JOB\1-03\REVISED\1-03\1-03-40.DWG
 T. MORRISON\JOB\1-03\REVISED\1-03\1-03-41.DWG
 T. MORRISON\JOB\1-03\REVISED\1-03\1-03-42.DWG
 T. MORRISON\JOB\1-03\REVISED\1-03\1-03-43.DWG
 T. MORRISON\JOB\1-03\REVISED\1-03\1-03-44.DWG
 T. MORRISON\JOB\1-03\REVISED\1-03\1-03-45.DWG
 T. MORRISON\JOB\1-03\REVISED\1-03\1-03-46.DWG
 T. MORRISON\JOB\1-03\REVISED\1-03\1-03-47.DWG
 T. MORRISON\JOB\1-03\REVISED\1-03\1-03-48.DWG
 T. MORRISON\JOB\1-03\REVISED\1-03\1-03-49.DWG
 T. MORRISON\JOB\1-03\REVISED\1-03\1-03-50.DWG
 T. MORRISON\JOB\1-03\REVISED\1-03\1-03-51.DWG
 T. MORRISON\JOB\1-03\REVISED\1-03\1-03-52.DWG
 T. MORRISON\JOB\1-03\REVISED\1-03\1-03-53.DWG
 T. MORRISON\JOB\1-03\REVISED\1-03\1-03-54.DWG
 T. MORRISON\JOB\1-03\REVISED\1-03\1-03-55.DWG
 T. MORRISON\JOB\1-03\REVISED\1-03\1-03-56.DWG
 T. MORRISON\JOB\1-03\REVISED\1-03\1-03-57.DWG
 T. MORRISON\JOB\1-03\REVISED\1-03\1-03-58.DWG
 T. MORRISON\JOB\1-03\REVISED\1-03\1-03-59.DWG
 T. MORRISON\JOB\1-03\REVISED\1-03\1-03-60.DWG
 T. MORRISON\JOB\1-03\REVISED\1-03\1-03-61.DWG
 T. MORRISON\JOB\1-03\REVISED\1-03\1-03-62.DWG
 T. MORRISON\JOB\1-03\REVISED\1-03\1-03-63.DWG
 T. MORRISON\JOB\1-03\REVISED\1-03\1-03-64.DWG
 T. MORRISON\JOB\1-03\REVISED\1-03\1-03-65.DWG
 T. MORRISON\JOB\1-03\REVISED\1-03\1-03-66.DWG
 T. MORRISON\JOB\1-03\REVISED\1-03\1-03-67.DWG
 T. MORRISON\JOB\1-03\REVISED\1-03\1-03-68.DWG
 T. MORRISON\JOB\1-03\REVISED\1-03\1-03-69.DWG
 T. MORRISON\JOB\1-03\REVISED\1-03\1-03-70.DWG
 T. MORRISON\JOB\1-03\REVISED\1-03\1-03-71.DWG
 T. MORRISON\JOB\1-03\REVISED\1-03\1-03-72.DWG
 T. MORRISON\JOB\1-03\REVISED\1-03\1-03-73.DWG
 T. MORRISON\JOB\1-03\REVISED\1-03\1-03-74.DWG
 T. MORRISON\JOB\1-03\REVISED\1-03\1-03-75.DWG
 T. MORRISON\JOB\1-03\REVISED\1-03\1-03-76.DWG
 T. MORRISON\JOB\1-03\REVISED\1-03\1-03-77.DWG
 T. MORRISON\JOB\1-03\REVISED\1-03\1-03-78.DWG
 T. MORRISON\JOB\1-03\REVISED\1-03\1-03-79.DWG
 T. MORRISON\JOB\1-03\REVISED\1-03\1-03-80.DWG
 T. MORRISON\JOB\1-03\REVISED\1-03\1-03-81.DWG
 T. MORRISON\JOB\1-03\REVISED\1-03\1-03-82.DWG
 T. MORRISON\JOB\1-03\REVISED\1-03\1-03-83.DWG
 T. MORRISON\JOB\1-03\REVISED\1-03\1-03-84.DWG
 T. MORRISON\JOB\1-03\REVISED\1-03\1-03-85.DWG
 T. MORRISON\JOB\1-03\REVISED\1-03\1-03-86.DWG
 T. MORRISON\JOB\1-03\REVISED\1-03\1-03-87.DWG
 T. MORRISON\JOB\1-03\REVISED\1-03\1-03-88.DWG
 T. MORRISON\JOB\1-03\REVISED\1-03\1-03-89.DWG
 T. MORRISON\JOB\1-03\REVISED\1-03\1-03-90.DWG
 T. MORRISON\JOB\1-03\REVISED\1-03\1-03-91.DWG
 T. MORRISON\JOB\1-03\REVISED\1-03\1-03-92.DWG
 T. MORRISON\JOB\1-03\REVISED\1-03\1-03-93.DWG
 T. MORRISON\JOB\1-03\REVISED\1-03\1-03-94.DWG
 T. MORRISON\JOB\1-03\REVISED\1-03\1-03-95.DWG
 T. MORRISON\JOB\1-03\REVISED\1-03\1-03-96.DWG
 T. MORRISON\JOB\1-03\REVISED\1-03\1-03-97.DWG
 T. MORRISON\JOB\1-03\REVISED\1-03\1-03-98.DWG
 T. MORRISON\JOB\1-03\REVISED\1-03\1-03-99.DWG
 T. MORRISON\JOB\1-03\REVISED\1-03\1-03-100.DWG



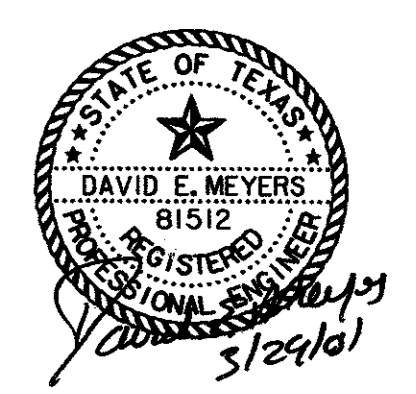
ADDISON ROAD

ARTIST WAY

NOTE:
 CENTER TO CENTER TREE DIMENSIONS
 ARE MEASURED ALONG THE CENTERLINE
 OF THE STREET.

BENCHMARKS:
 BM#5
 "I" CUT ON 8' INLET ON NORTH CURB LINE OF GOODMAN AVE., 275' EAST OF PASCHAL PLACE. ELEV. 629.98
 BM#6
 "I" CUT AT C/O OF 8' INLET AT THE SOUTHWEST CORNER OF MORRIS AVE. AND WITT PLACE. ELEV. 627.29
 BM#7
 "I" CUT AT WEST CORNER OF ADDISON THEATRE CENTRE PARKING LOT, SECOND ENTRANCE NORTH OF ADDISON RD. ELEV. 637.66

THE SEAL APPEARING ON THIS DOCUMENT WAS AUTHORIZED BY DAVID E. MEYERS, P.E. 81512



DATE	DESCRIPTION	REF NO.
4/20/01	ISSUED FOR BID	N/A

STREETSCAPE PLAN
MORRIS AVENUE EXTENSION
 PUBLIC INFRASTRUCTURE
 TOWN OF ADDISON, TEXAS

HUIH - Zollars, Inc. 3131 McKinney Ave., Suite 600, Dallas, TX 75204 Phone (214) 871-3311/Fax (214) 871-0757						
DESIGN	DRAWN	APPR.	SCALE	DATE	PROJECT NO.	NO.
HZI	HZI	DEM	1"=20'	APR. 2001	01-3000-01	6