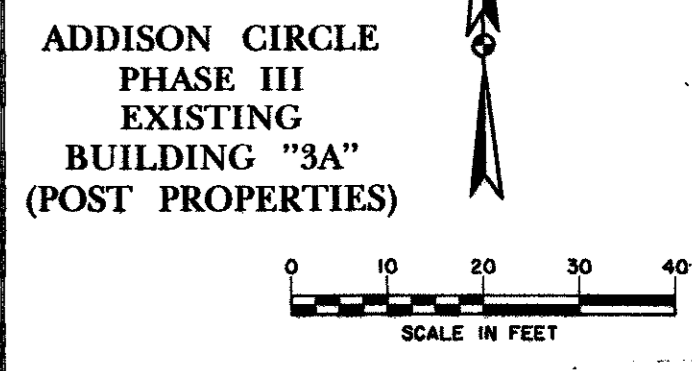
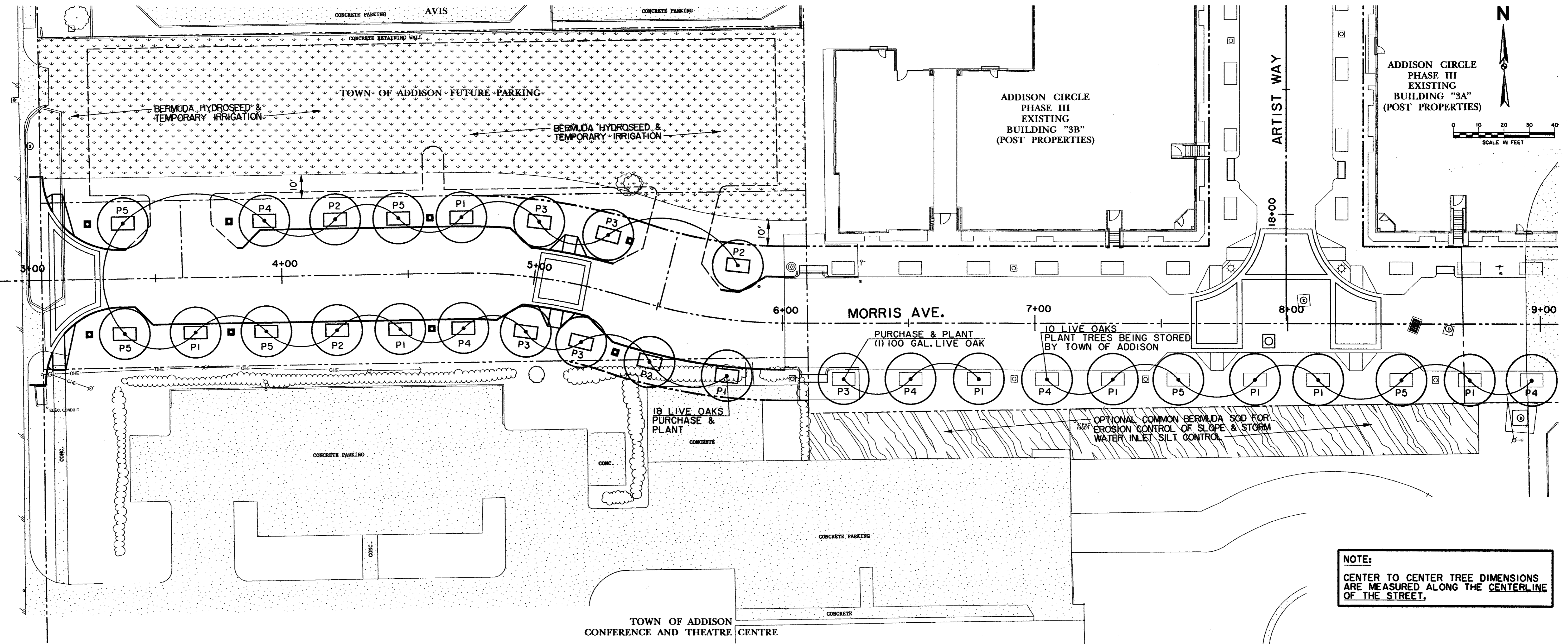
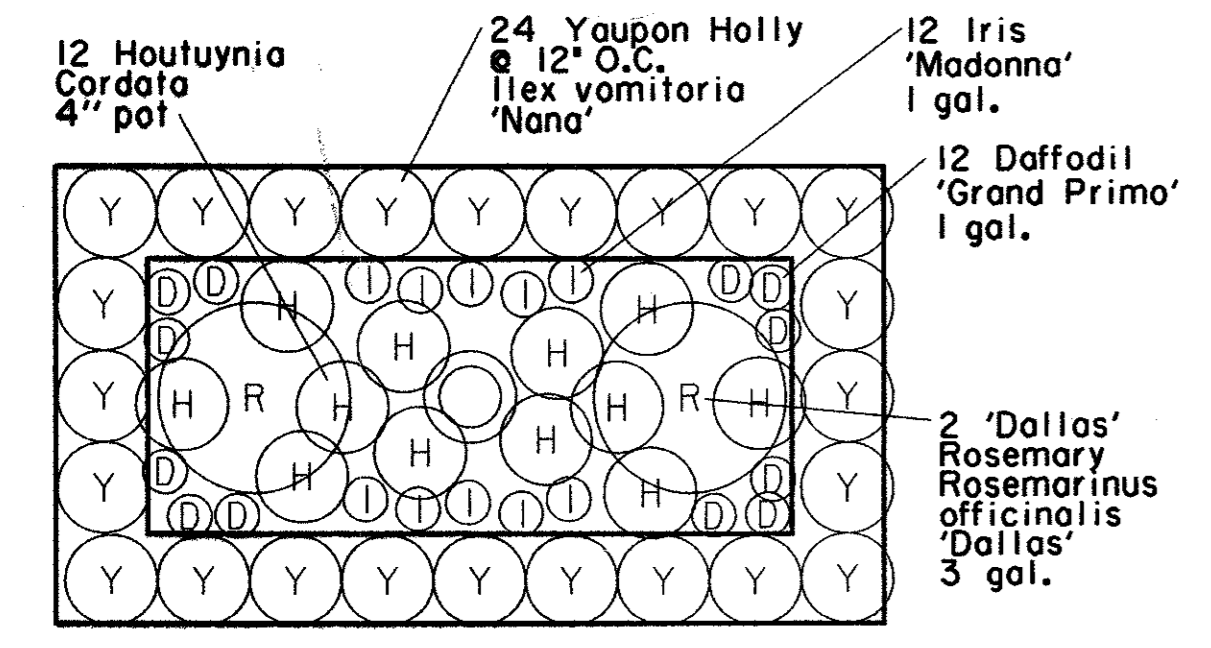


H:\MORRIS\01300001\01300001.dwg
 T. WORTFORD, INC. 1-817-424-2424
 B. WORTFORD, INC. 1-817-424-2424
 H:\MORRIS\01300001\01300001.dwg
 T. WORTFORD, INC. 1-817-424-2424
 B. WORTFORD, INC. 1-817-424-2424

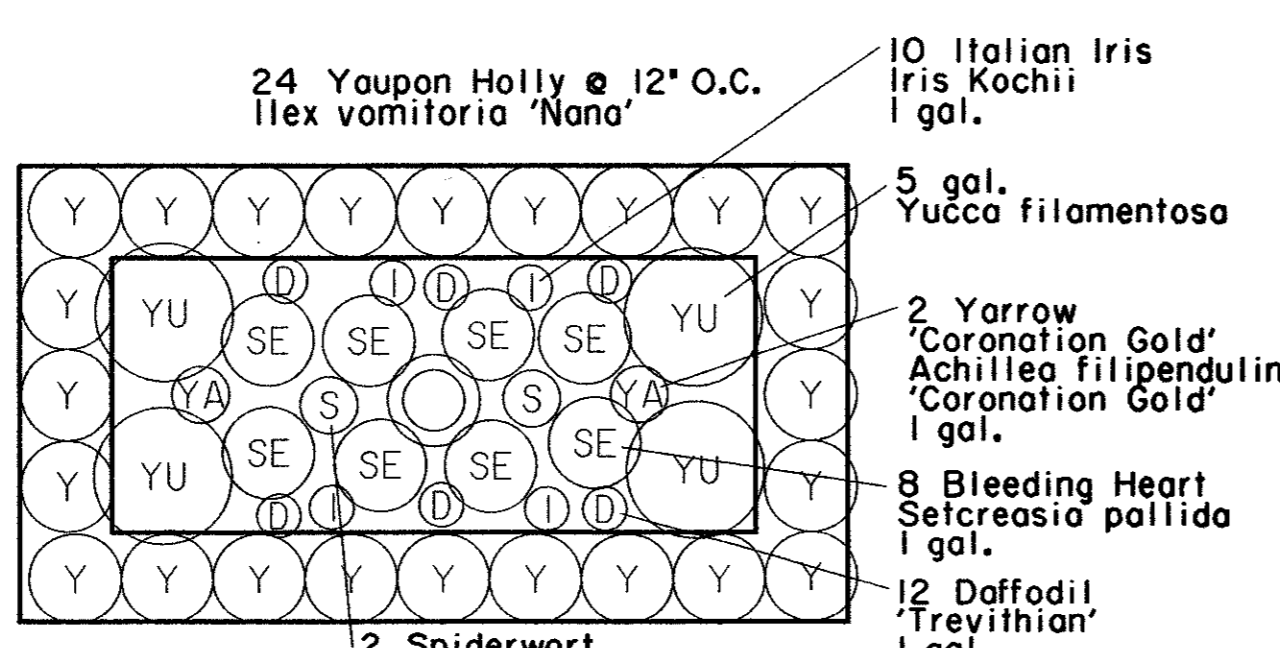
ADDISON ROAD



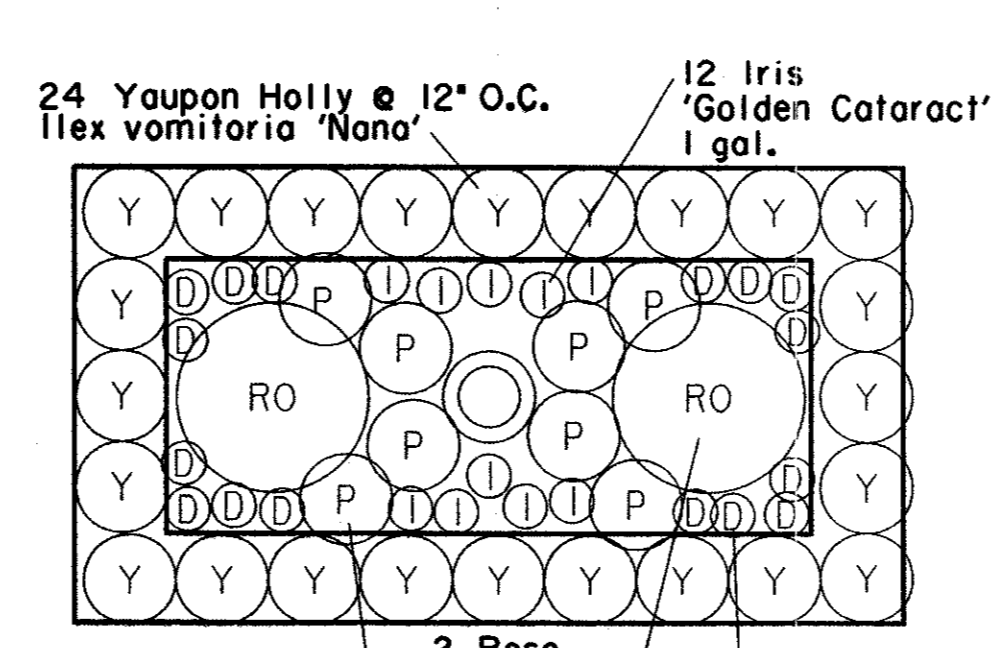
NOTE:
CENTER TO CENTER TREE DIMENSIONS ARE MEASURED ALONG THE CENTERLINE OF THE STREET.



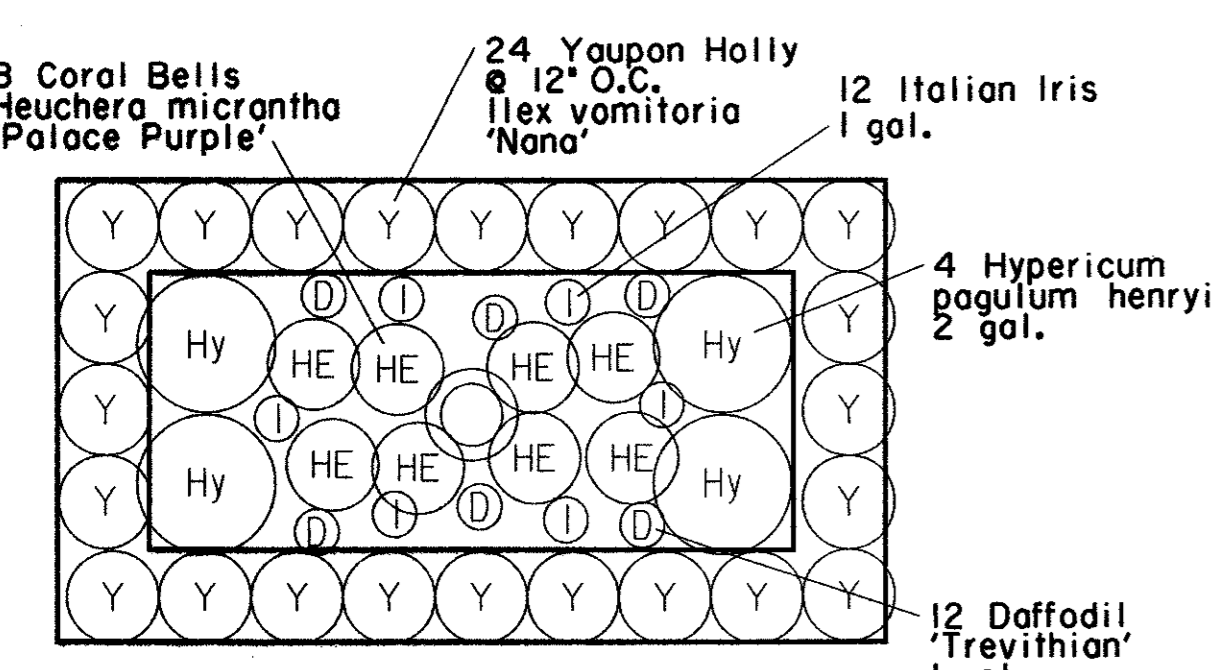
P1 5'X9' TREE WELL PLANTING



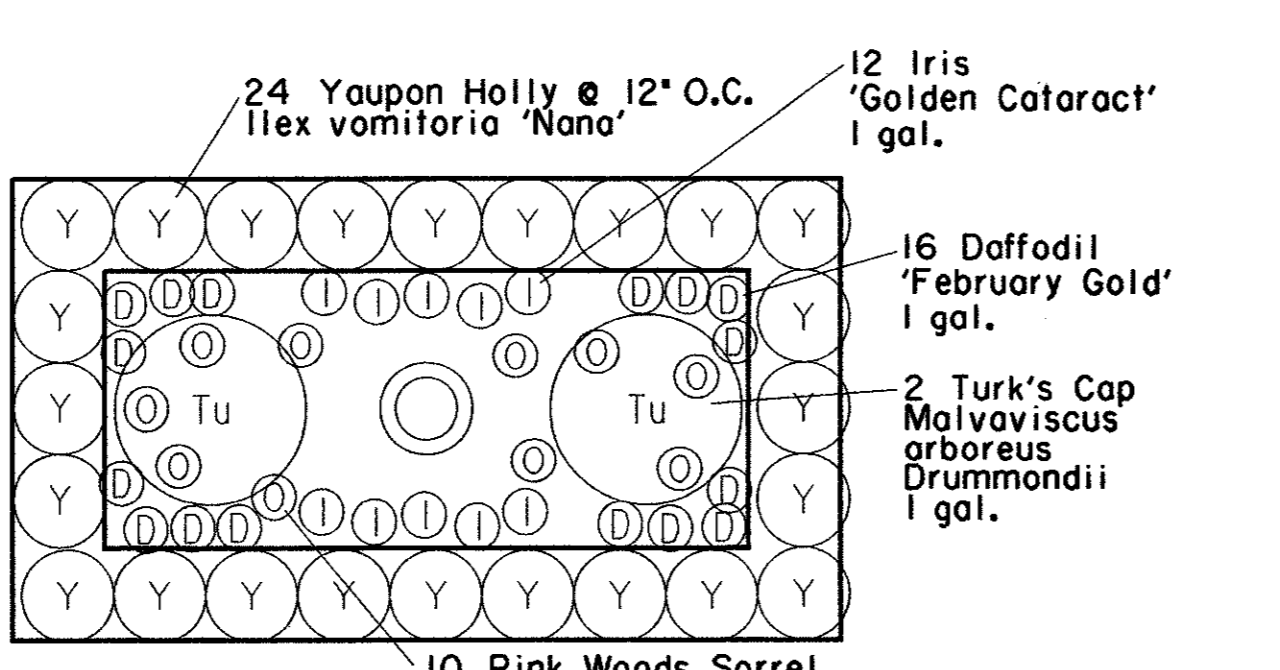
P3 5'X9' TREE WELL PLANTING



P5 5'X9' TREE WELL PLANTING



P2 5'X9' TREE WELL PLANTING

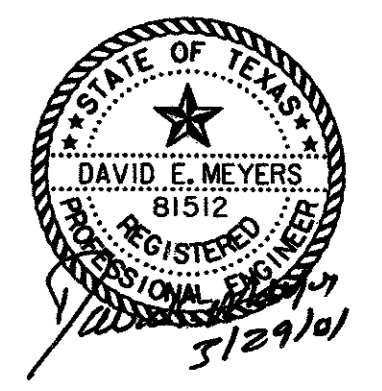


P4 5'X9' TREE WELL PLANTING

QUANTITY	COMMON NAME	PLANT LIST BOTANICAL NAME	SIZE/REMARKS
Shade Trees			
29	Live Oak	Quercus virginiana	200 GAL., 5"-6" C
Shrubs			
696	Dwarf Yaupon Holly	Ilex vomitoria 'nana'	1-GAL., 8"-10" H
16	Hypericum	Hypericum pagulum 'henryi'	2-GAL., 14"-18" HT
12	Rose 'Marie Pavie'	Rosa sp., Marie Pavie'	2-GAL., 12"-14" HT
18	Dallas' Rosemary	Rosmarinus officinalis 'Dallas'	3-gal., 18"-24" H
25	Yucca filamentosa	Yucca filamentosa	5-gal., FULL
10	Spiderwort	Tradescantia occidentalis	1-gal., 8"-10" H
Perennials/Ground Cover			
10	Yarrow 'Coronation Gold'	Achillea filipendulina 'Coronation Gold'	1-GAL-FULL
48	Blue Plumbago	Ceratostigma plumbaginoides	4" POT-FULL
108	Houttuynia	Houttuynia cordata 'variagata'	4" POT-FULL
108	Iris 'Madonna'	Iris albicans 'Madonna'	1-GAL-FULL
98	Italian Iris	Iris kochii	1-GAL-FULL
132	Iris 'Golden Cataract'	Iris kochii 'Golden Cataract'	1-GAL-FULL
10	Turk's Cap	Malva viscosus arbores Drummondii	1-GAL-FULL
176	Daffodil 'February Gold'	Narcissus x 'February Gold'	1-GAL-FULL
108	Daffodil 'Grand Primo'	Narcissus x 'Grand Primo'	1-GAL-FULL
108	Daffodil Trevithian	Narcissus x 'Trevithian'	1-GAL-FULL
40	Bleeding Heart	Setcreasea pallida	1-GAL-FULL
32	Coral 'Palace Purple'	Heuchera micrantha	1-GAL.-FULL
50	Pink Woods Sorrel	Oxalis crossipes	1-GAL.-FULL

BENCHMARKS:
BM#5
"I" CUT ON 8' INLET ON NORTH CURB LINE OF GOODMAN AVE. ±75' EAST OF PASCHAL PLACE. ELEV. 629.98
BM#6
"I" CUT AT E OF 8' INLET AT THE SOUTHWEST CORNER OF MORRIS AVE. AND WITT PLACE. ELEV. 627.29
BM#7
"I" CUT AT WEST CORNER OF ADDISON THEATRE CENTRE PARKING LOT, SECOND ENTRANCE NORTH OF ADDISON RD. ELEV. 637.66

THE SEAL APPEARING ON THIS DOCUMENT WAS AUTHORIZED BY DAVID E. MEYERS, P.E. 81512



DATE	DESCRIPTION	REF NO.
4/20/01	ISSUED FOR BID	N/A

PLANTING PLAN / DETAILS
MORRIS AVENUE EXTENSION
 PUBLIC INFRASTRUCTURE
 TOWN OF ADDISON, TEXAS

DESIGN	DRAWN	APPR.	SCALE	DATE	PROJECT NO.	NO.
HZI	HZI	DEM	1"=20'	APR. 2001	01-3000-01	7