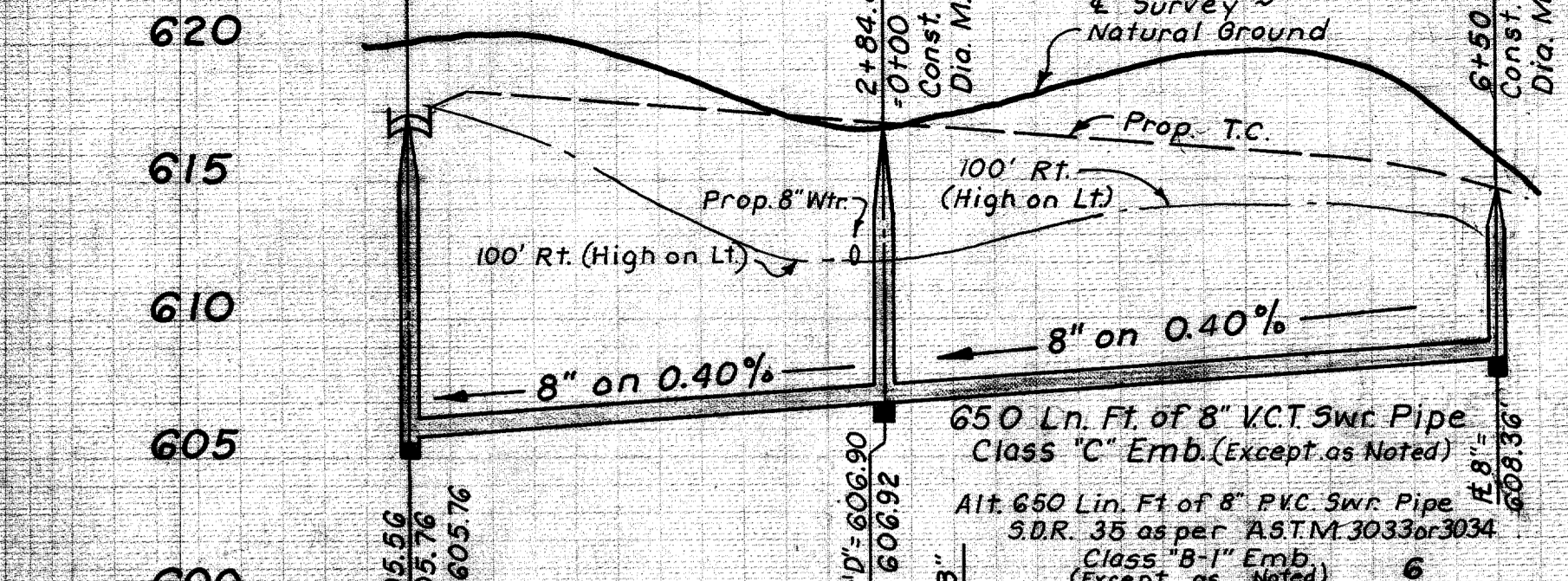
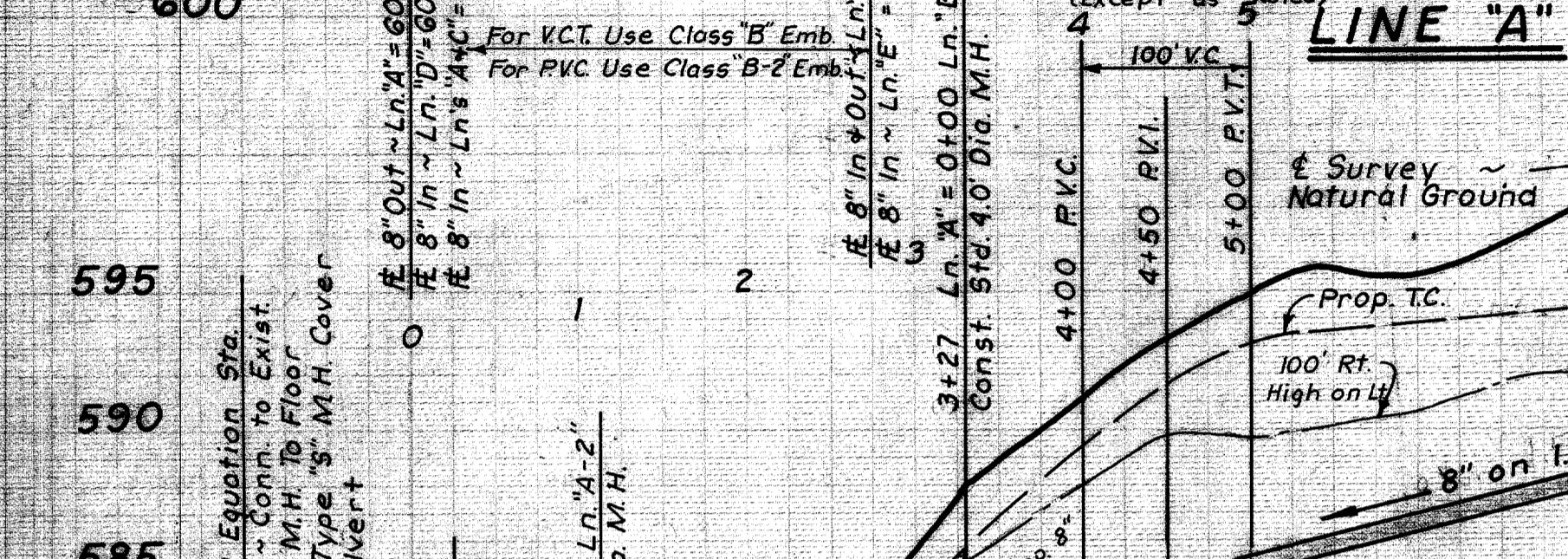


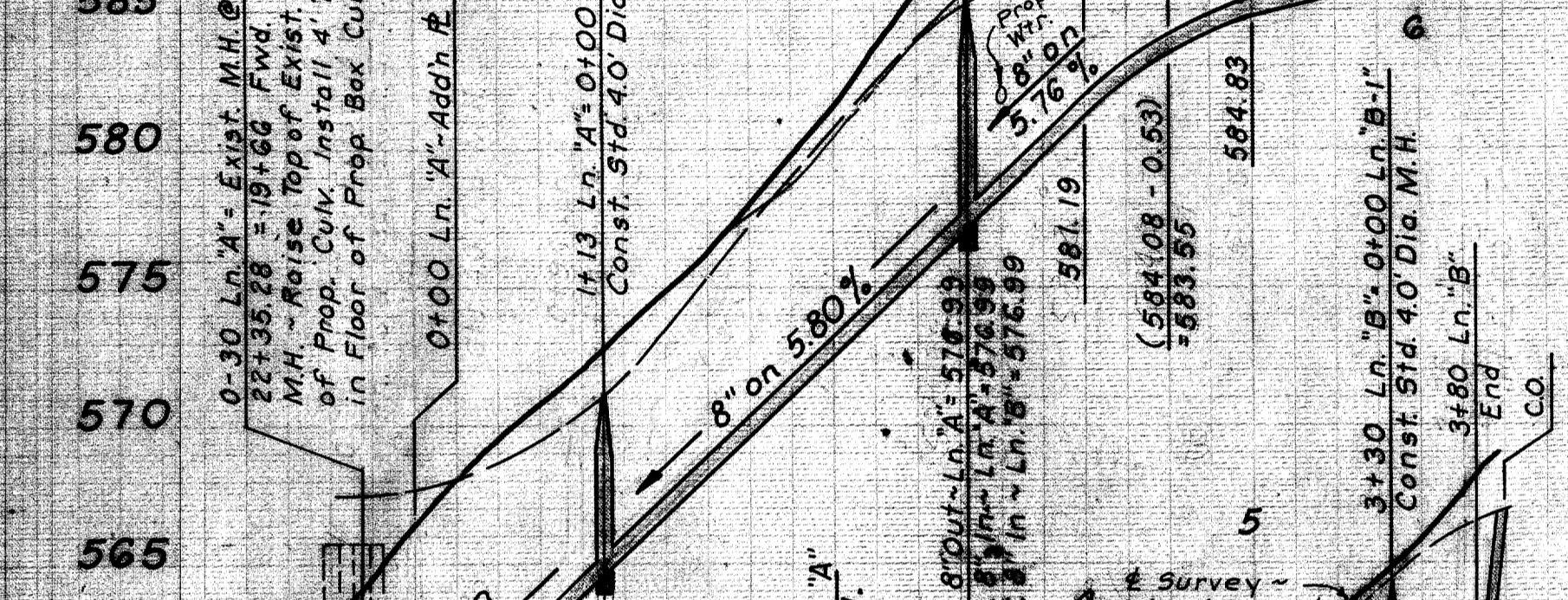
0+00 Ln. D+C = 12+85  
Ln. A'-Const. Std. 4.0  
Dia. M.H.



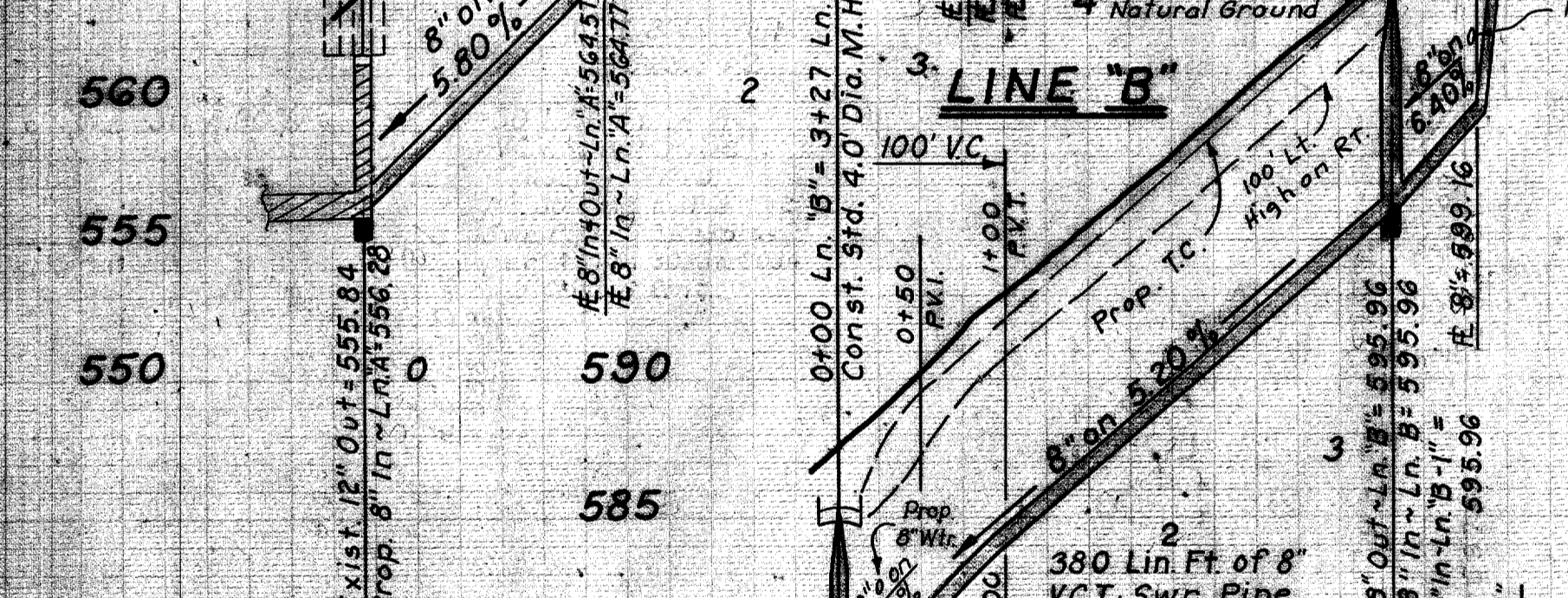
**LINE "D"**



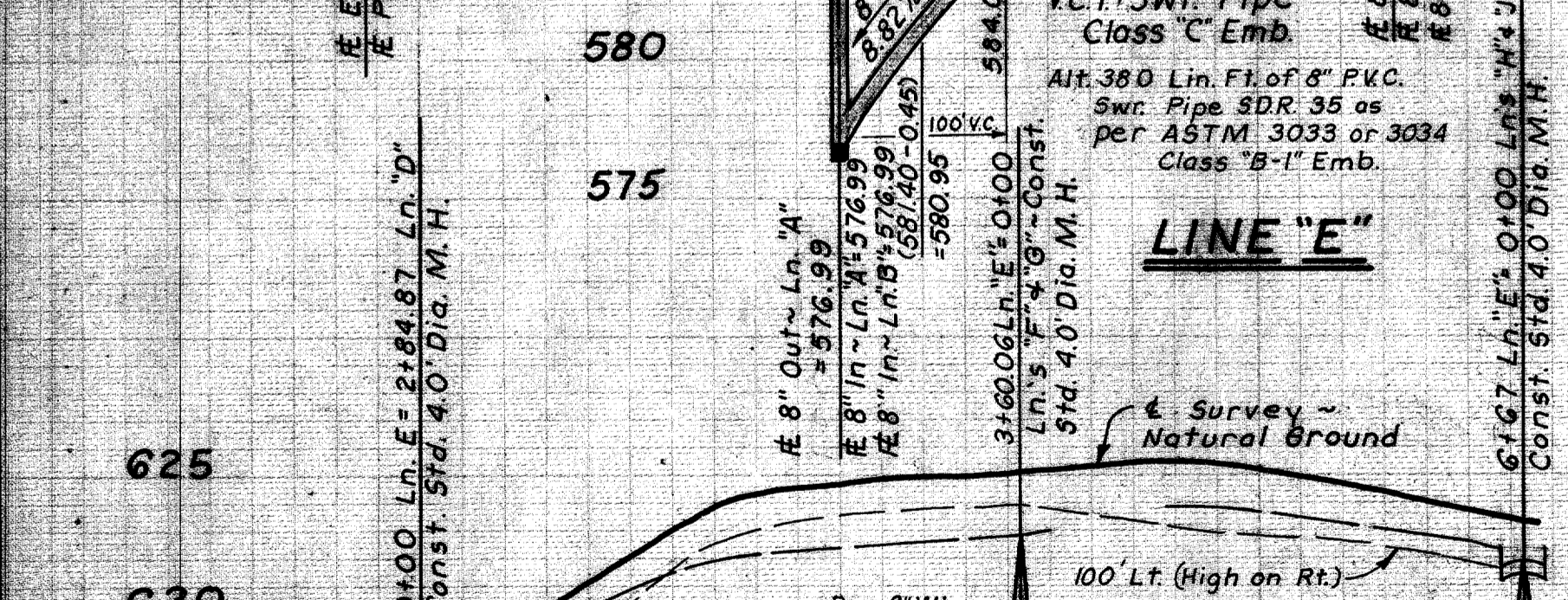
**LINE "A"**



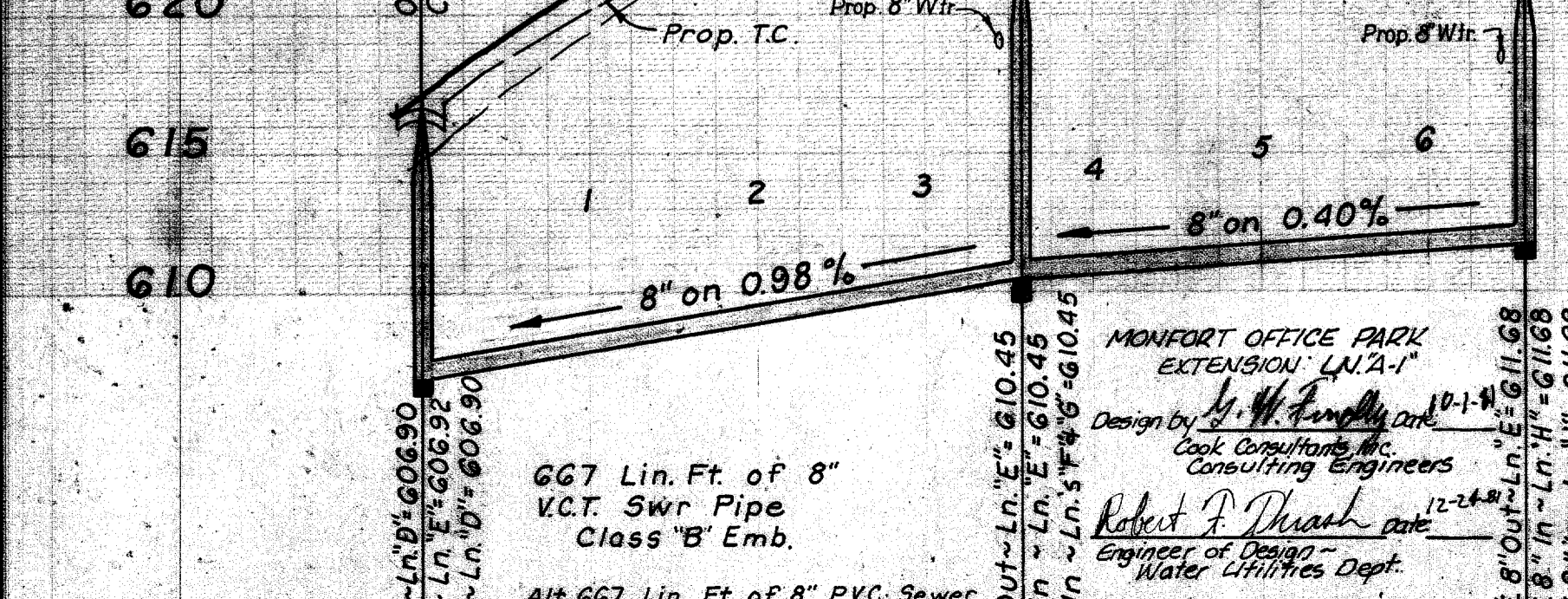
**LINE "B"**



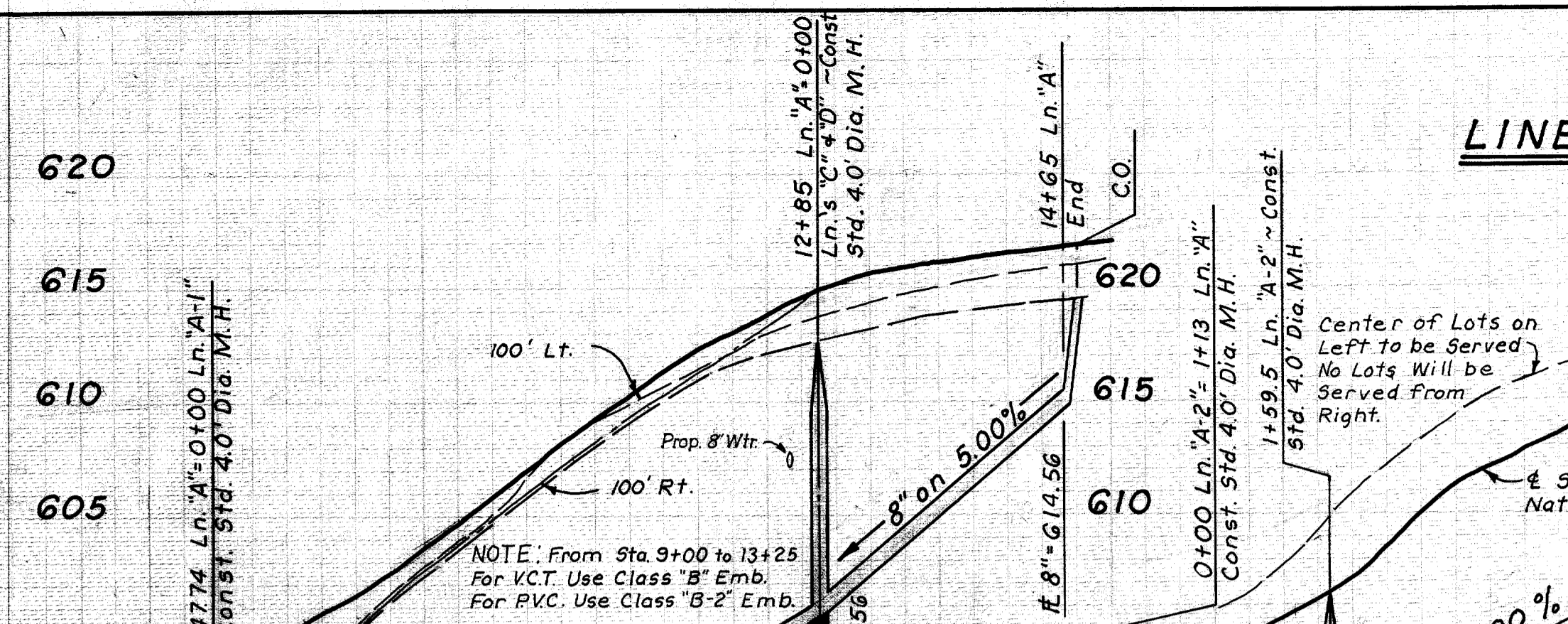
**LINE "E"**



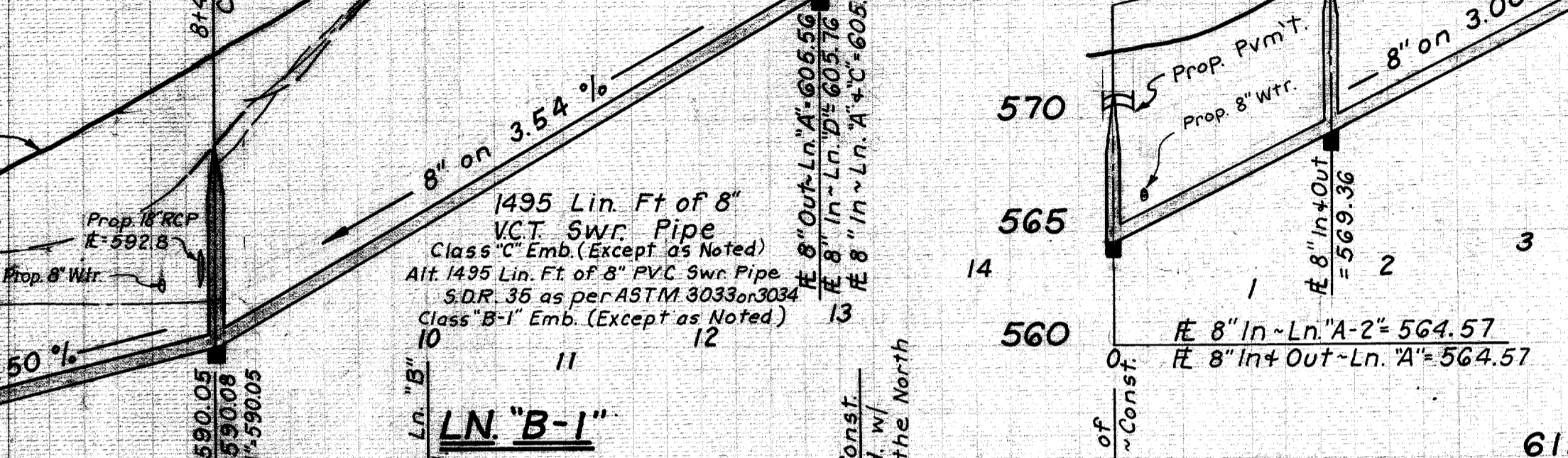
**LINE "F"**



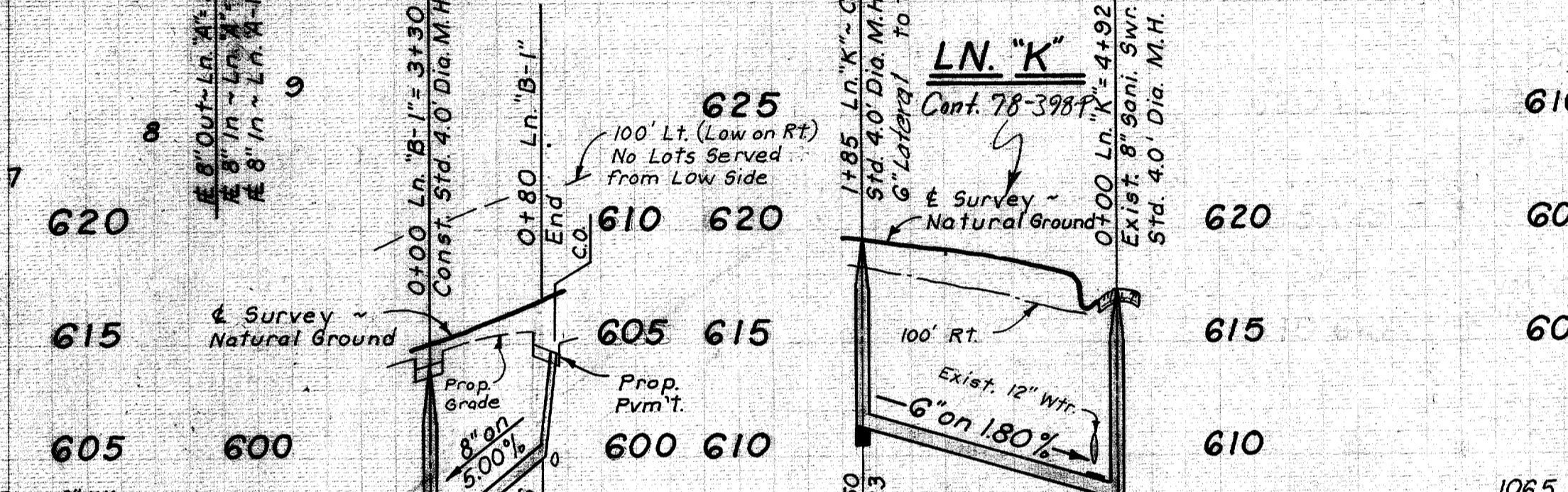
**LINE "G"**



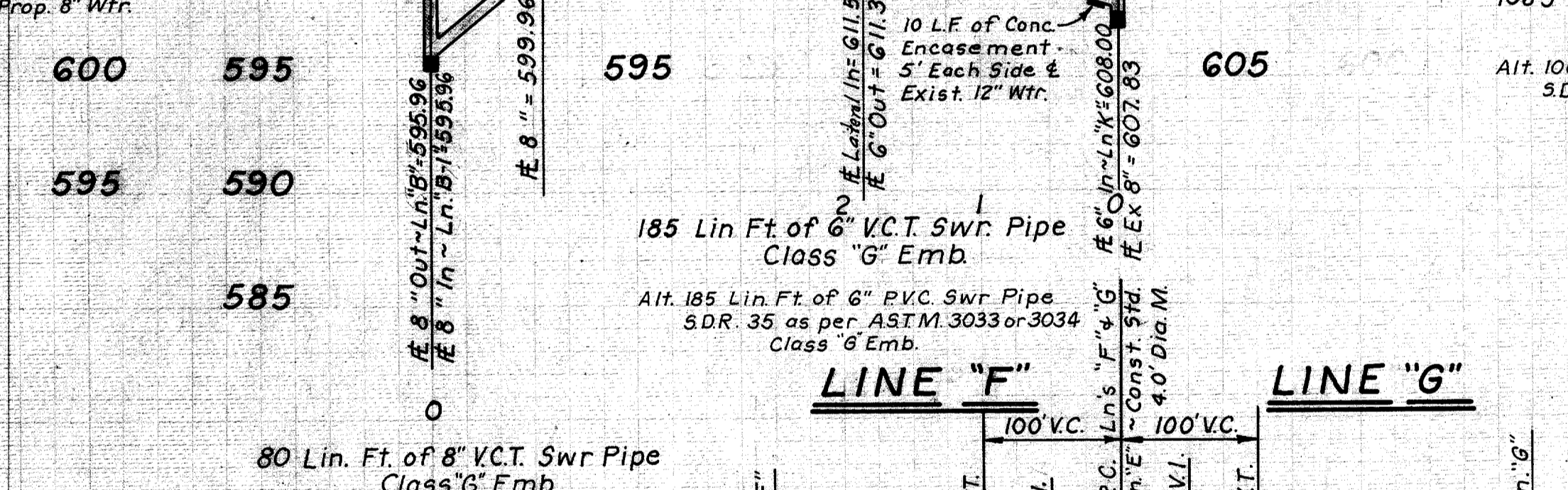
**LINE "A-2"**



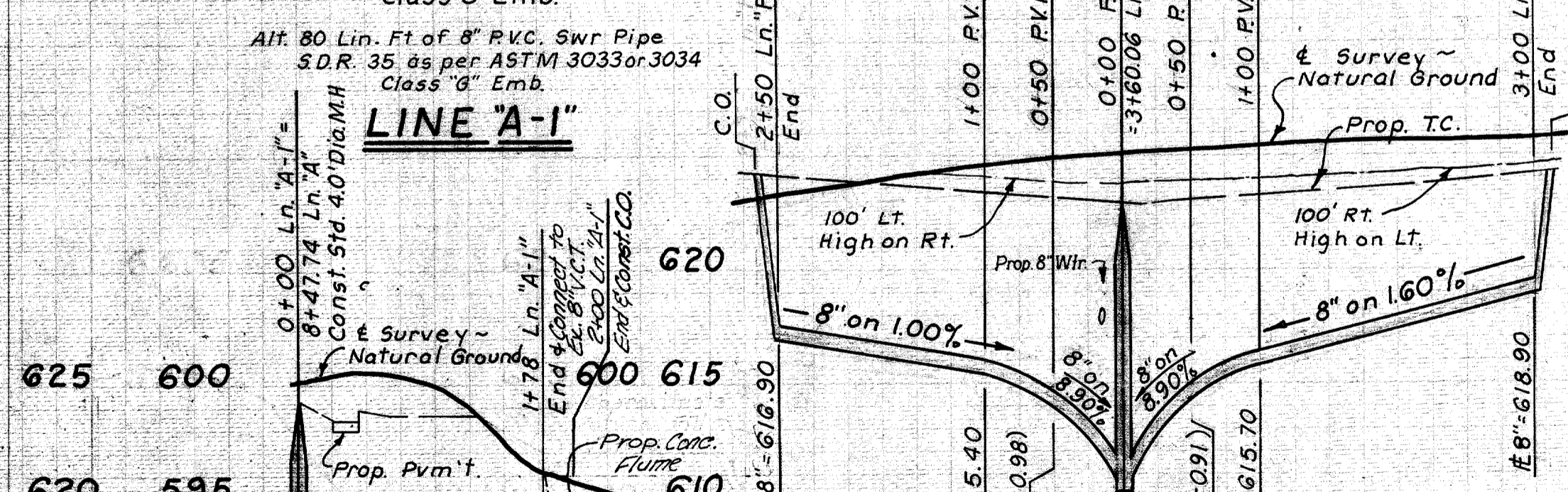
**LINE "K"**



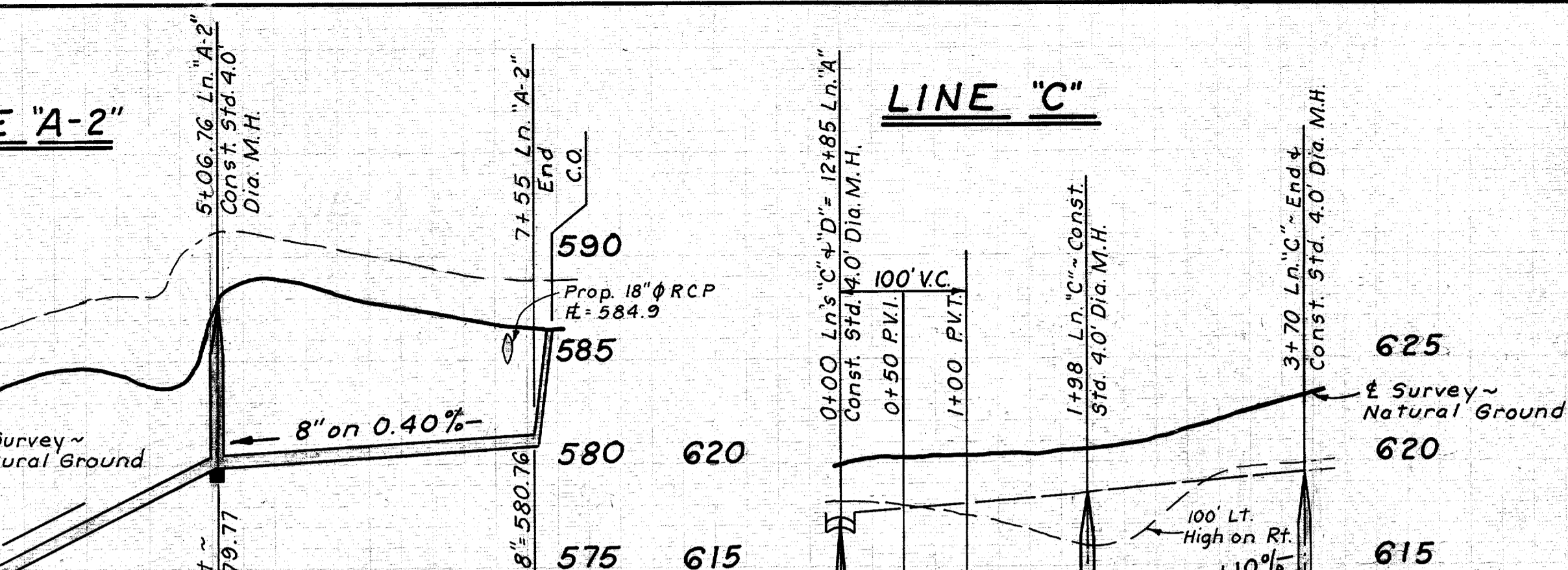
**LINE "H"**



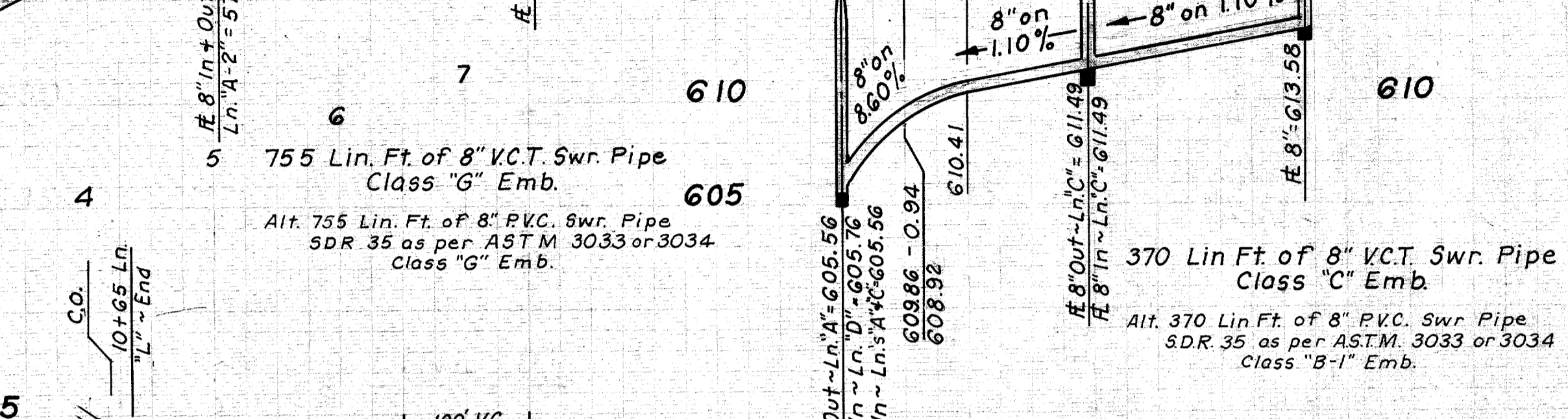
**LINE "J"**



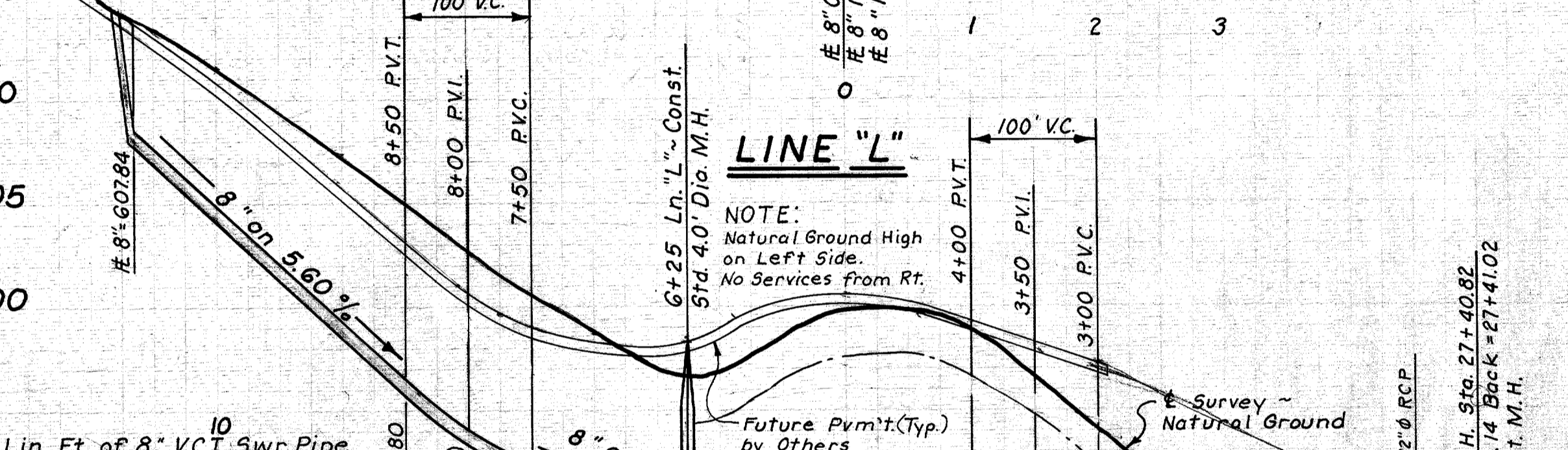
**LINE "A-1"**



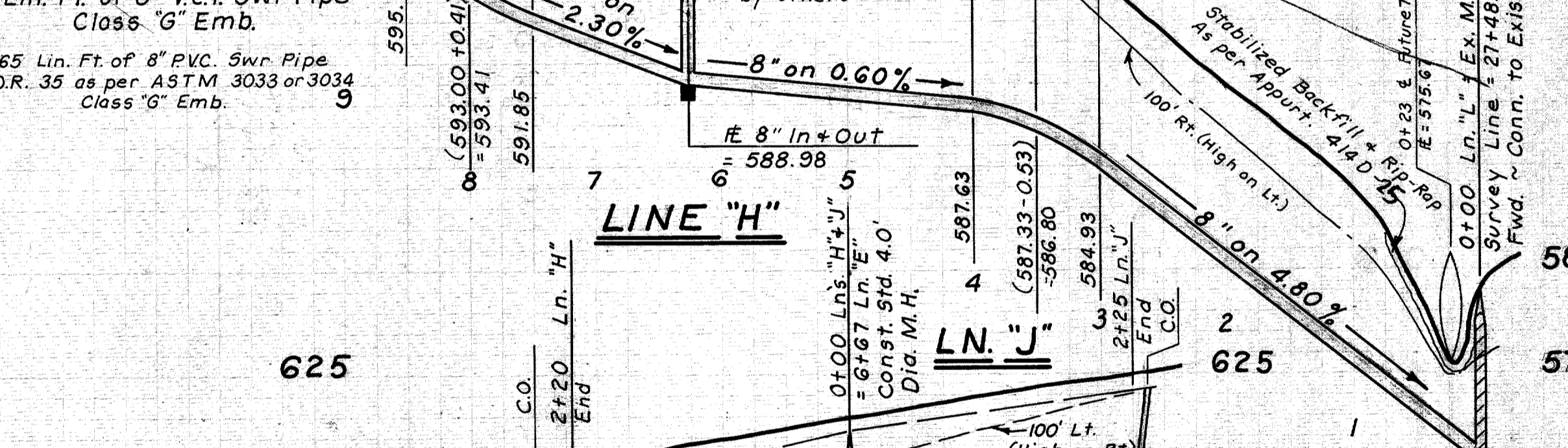
**LINE "C"**



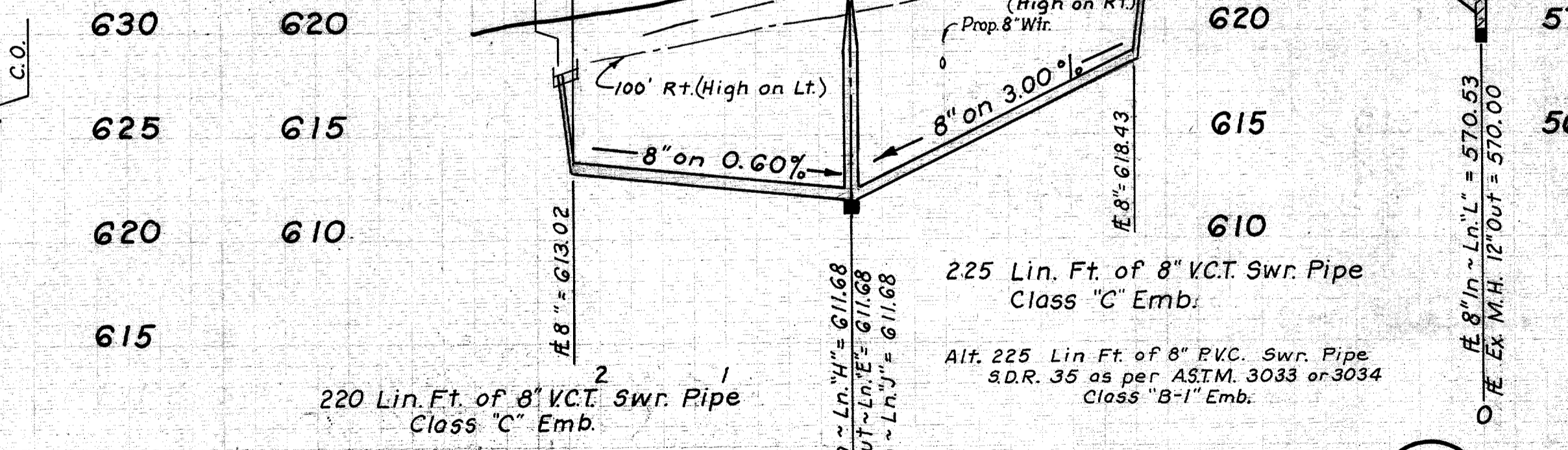
**LINE "L"**



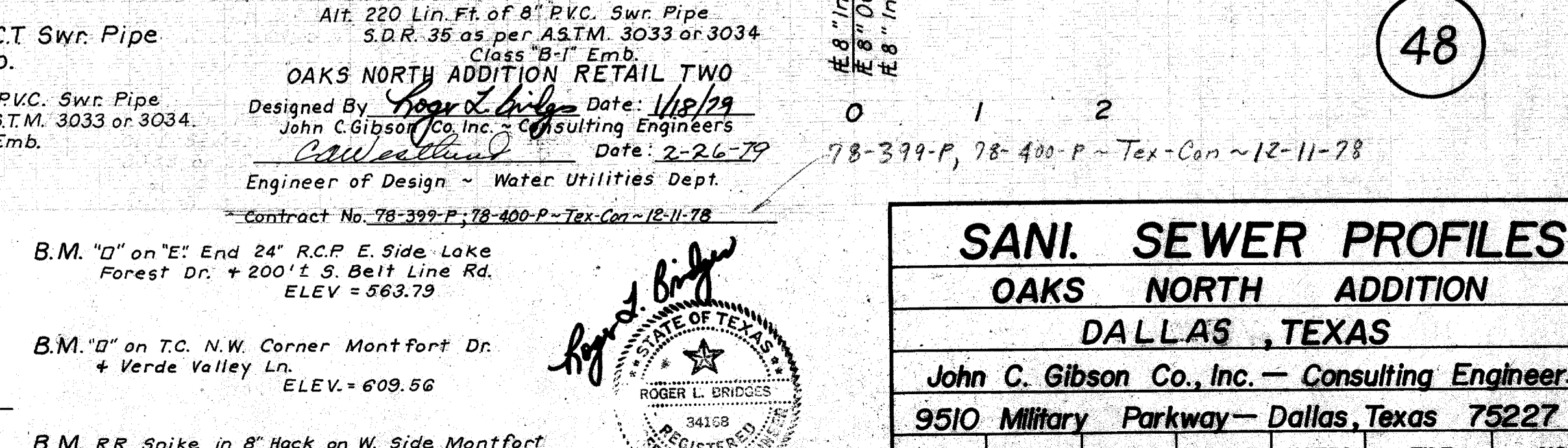
**LINE "M"**



**LINE "N"**



**LINE "O"**



**LINE "P"**

MONMONT OFFICE PARK  
EXTENSION LN. A-1  
Design by: *John C. Gibson*  
Consulting Engineers  
Contract No. 78-399-P-12-11-78  
Contract No. 78-401-P-12-11-78

OAKS NORTH ADDITION  
Retail One  
Design by: *John C. Gibson*  
Consulting Engineers  
Contract No. 78-397-P-12-11-78

OAKS NORTH ADDITION RETAIL TWO  
Design by: *John C. Gibson*  
Consulting Engineers  
Contract No. 78-399-P-12-11-78

SANI. SEWER PROFILES  
OAKS NORTH ADDITION  
DALLAS, TEXAS  
John C. Gibson Co., Inc. - Consulting Engineers  
9510 Military Parkway - Dallas, Texas 75227  
DESIGN: A.D.M. DRAWN: G.M. DATE: Nov. 29, 1978. SCALE: H=1"=100', V=1"=6'. NOTES: D.B. FILE: 411Q NO.: 1960