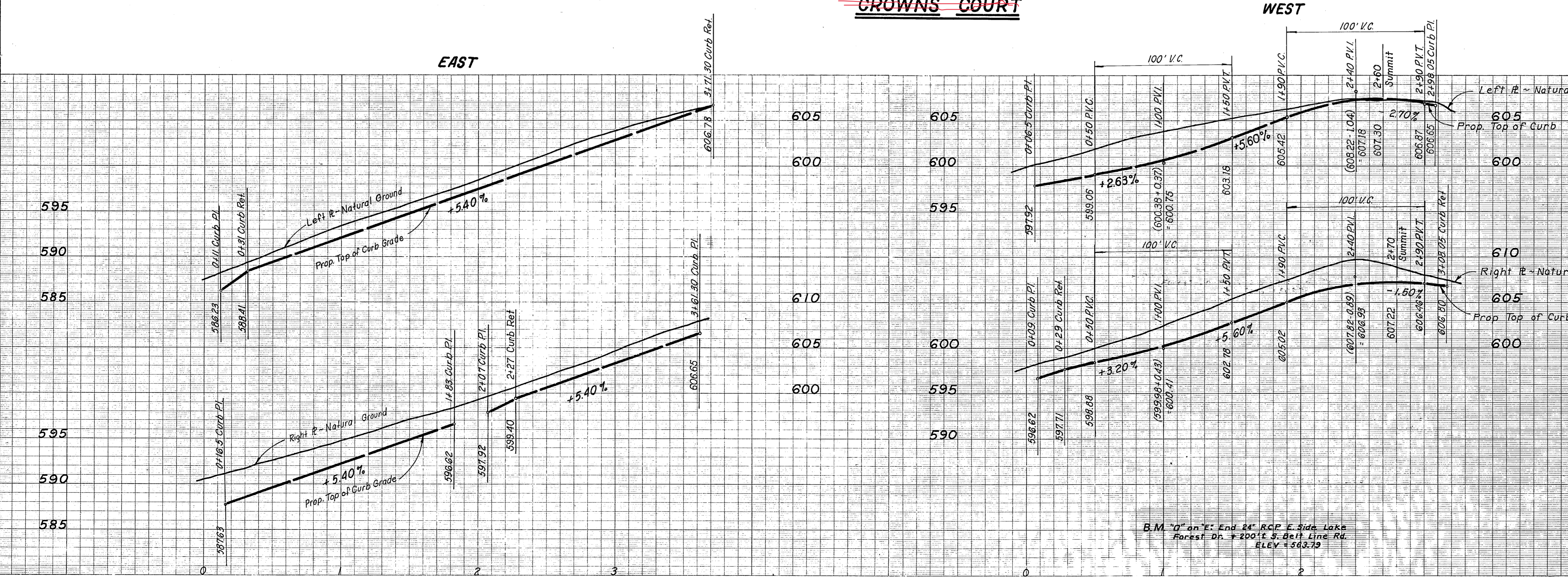


NOTE: On All Streets w/ Island Contractor to verify island Configuration with owner prior to Start of Construction.

TRAFALGAR CT.
CROWNS COURT



PAVING PLANS						
OAKS NORTH ADDITION						
ADDISON, TEXAS						
John C. Gibson Co. Inc. ~ Consulting Engineers						
9510 Military Parkway ~ Dallas, Texas 75227						
DESIGN	DRAWN	DATE	SCALE	NOTES	FILE	NO.
ADM.	G.E. C.L.	Aug. 23 1978	H:1'-40" V:1'-6"	D.B.	Oaks North Addition	6 16
CROWNS COURT						#10386

B.M. "O" on "E" End 24" R.G.P. E. Side Lake
Forest Dr. + 200' E. S. Belt Line Rd.
ELEV = 563.79