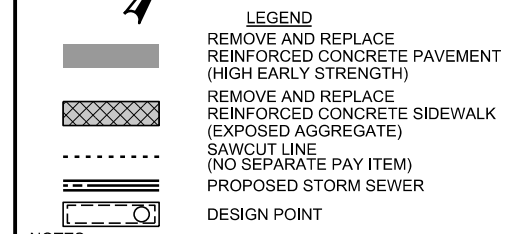
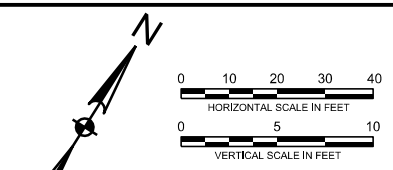
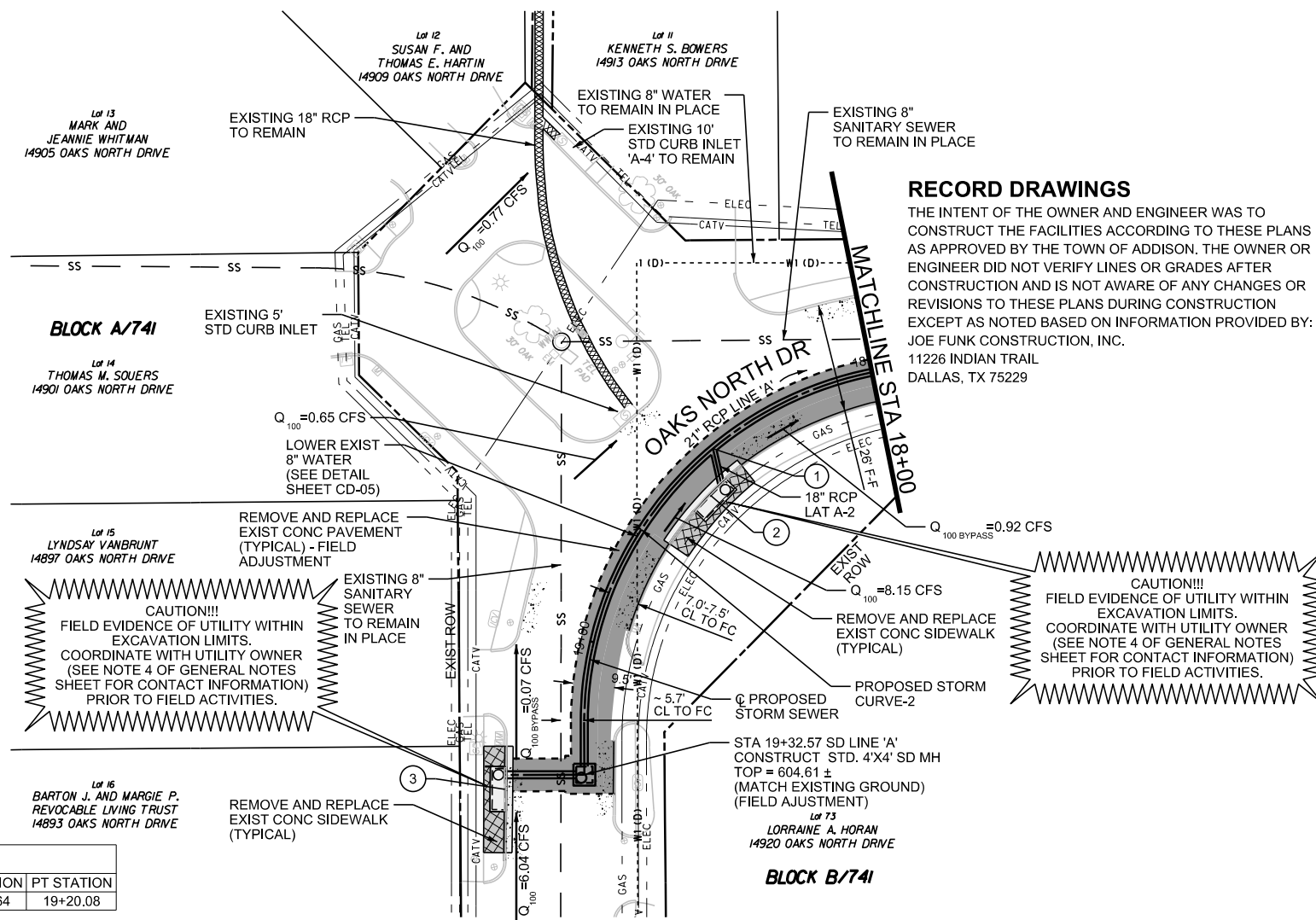


- STA 18+43.47 SD LINE 'A' =
STA 0+00.00 SD LAT 'A-2'
INSTALL 21" X 18" 60° WYE
- STA 0+09.15 SD LAT 'A-2' =
STA 18+52.06
SD LINE 'A', 8.15' LT
INSTALL
10' STD CURB INLET 'A-2'
TC = 598.40 ±
FL 18" = 593.40
- STA 19+52.05
SD LINE 'A', 3.50' LT
INSTALL
10' STD CURB INLET 'A-1'
TC = 605.00 ±
FL 21" = 600.00
(FIELD ADJUSTMENT)

BENCHMARKS & CONTROL POINTS				
POINT	NORTHING	EASTING	ELEVATION	DESCRIPTION
COA-10	7,033,108.643	2,486,403.339	593.89	2" BRASS DISK STAMPED "TXDOT COA-10 GPS"
COA-5	7,036,216.214	2,482,155.872	630.10	2" BRASS DISK STAMPED "TXDOT COA-5 GPS"

OAKS NORTH DRIVE PROPOSED STORM - CURVE DATA								
CURVE	PI STATION	DELTA	DEGREE	TANGENT	LENGTH	RADIUS	PC STATION	PT STATION
PROPOSED STORM CURVE-2	18+70.14	90° 00' 00.00" (LT)	65° 28' 51.21"	87.50'	137.44'	87.50'	17+82.64	19+20.08

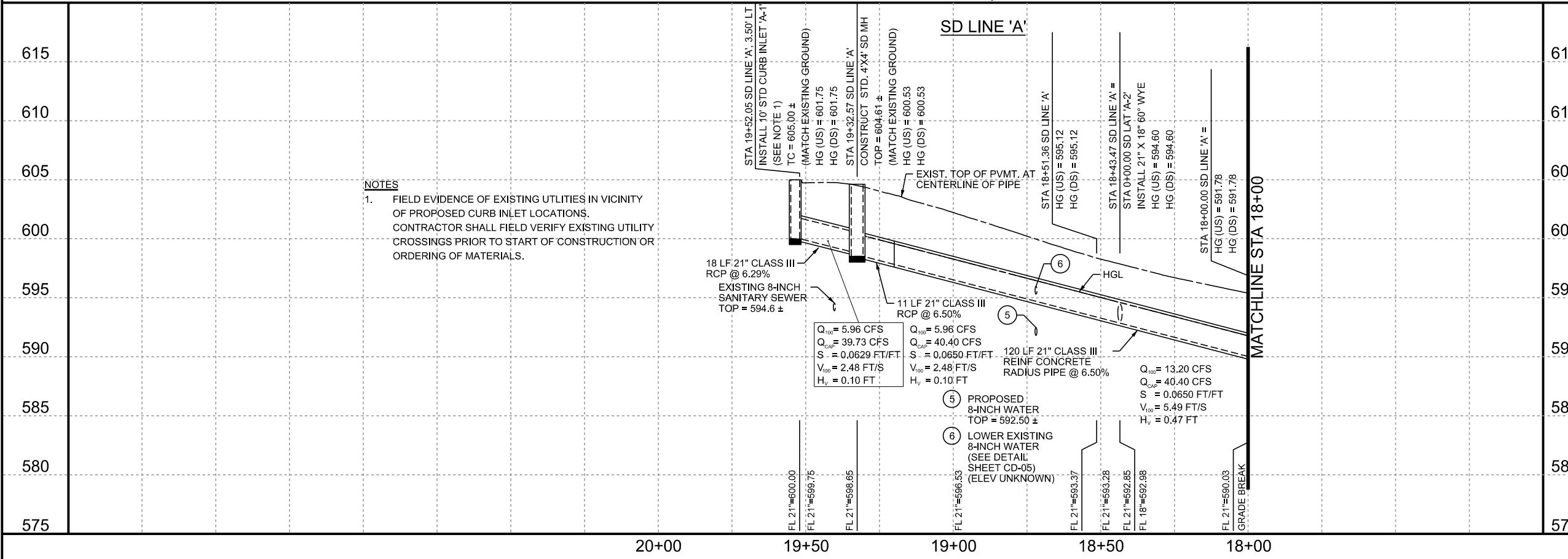


- NOTES:**
- UNLESS NOTED, UTILITY CROSSING LOCATIONS BASED ON ASSUMED DEPTHS AND SHALL BE UNCOVERED AND VERIFIED BY CONTRACTOR PRIOR TO START OF CONSTRUCTION.
 - SLOPES SHOWN BASED ON HYDRAULIC LENGTH OF PIPE SEGMENT (CENTER OF NODE TO CENTER OF NODE) LENGTHS SHOWN ARE ACTUAL LENGTH OF PIPE.
 - INLET CONTROL POINT STA/OFF SHOWN AT CENTER LINE OF INLET BOX AT BACK OF CURB.
 - POSITIVE DRAINAGE MUST BE MAINTAINED AT ALL TIMES.
 - PROPOSED INLETS TOPS AND SURFACE OF PROPOSED SIDEWALK SHALL BE EXPOSED AGGREGATE (MATCH EXISTING SURFACE).
 - STARTING HYDRAULIC GRADE LINE ELEVATION IS BASED ON THE STORMWATER SYSTEM ASSESSMENT AND STUDY PERFORMED BY HALFF ASSOCIATES ON AUGUST, 2017.
 - TOWN INSPECTOR WILL DETERMINE FINAL PAVEMENT REMOVAL LIMITS. ACTUAL LIMITS OF REMOVAL MAY VARY BASED ON SITE CONDITIONS.
 - SANITARY SEWER SERVICES ARE TO BE CONSTRUCTED TO CLEAR EXISTING AND PROPOSED FACILITIES. THE SANITARY SEWER LATERAL SHALL HAVE A MIN. COVER OF 4" BELOW THE CURB GRADE AT THE PROPERTY LINE, OR AS REQUIRED TO MAINTAIN A MINIMUM OF 1.00% GRADE, OR AS DIRECTED BY THE OWNER.
 - NO SEPARATE PAY ITEM FOR PAVEMENT REPAIR HEADER. THIS ITEM SHALL BE SUBSIDIARY TO REINFORCED CONCRETE PAVEMENT ITEM.
 - TEMPORARY PAVEMENT FOR TRENCH REPAIRS SHALL BE SUBSIDIARY TO THE FURNISHING AND INSTALLATION OF REINFORCED CONCRETE PIPE. TEMPORARY MAINTENANCE MATERIAL FOR TRENCH REPAIRS ASSOCIATED WITH PIPE INSTALLATION SHOULD INCLUDE 2" TYPE C HMA OVER 6" OF FLEXIBLE BASE.

RECORD DRAWINGS

THE INTENT OF THE OWNER AND ENGINEER WAS TO CONSTRUCT THE FACILITIES ACCORDING TO THESE PLANS AS APPROVED BY THE TOWN OF ADDISON. THE OWNER OR ENGINEER DID NOT VERIFY LINES OR GRADES AFTER CONSTRUCTION AND IS NOT AWARE OF ANY CHANGES OR REVISIONS TO THESE PLANS DURING CONSTRUCTION EXCEPT AS NOTED BASED ON INFORMATION PROVIDED BY: JOE FUNK CONSTRUCTION, INC. 11226 INDIAN TRAIL DALLAS, TX 75229

- NOTES**
- FIELD EVIDENCE OF EXISTING UTILITIES IN VICINITY OF PROPOSED CURB INLET LOCATIONS. CONTRACTOR SHALL FIELD VERIFY EXISTING UTILITY CROSSINGS PRIOR TO START OF CONSTRUCTION OR ORDERING OF MATERIALS.



REVISIONS			
REV NO.	DATE	DESCRIPTION	BY
1			
2			



CRIADO
4100 SPRING VALLEY ROAD, SUITE 1001
DALLAS, TX 75244
O: 972-392-9092 F: 972-392-9192
FIRM NO. F-4373

**DRAINAGE PLAN & PROFILE
STA. 18+00 TO END
OAKS NORTH DRIVE
DRAINAGE IMPROVEMENTS
TOWN OF ADDISON, TEXAS**

DESIGN	DRAWN	DATE	SCALE	NOTES	FILE	NO.
CRIADO	CRIADO	NOV 2019	AS SHOWN	R14285.01	DRN-01	12

DATE: 11/18/2020 TIME: 12:05:09 PM FILE NAME: N:\PROJECTS\R14285.00_Addison_2017\Various Projects\R14285.01_White Rock Drainage\07_DON0706_SheetR14285.01_DRN_01.dgn