

**LEGEND:**

- CIP CURB INLET PROTECTION
- PROPOSED SOD
- SURFACE FLOW DIRECTION
- EXISTING CONTOURS

**NOTES:**

1. SEE SW3P SHEET FOR MORE INFORMATION AND NOTES.
2. COORDINATE SW3P BMP INSTALLATION SEQUENCE WITH OVERALL PHASING PLAN; SEE OVERALL PHASING PLAN SHEET FOR ADDITIONAL INFORMATION.
3. CONTRACTOR SHALL ADJUST LOCATION OF CONSTRUCTION ENTRANCES DEPENDING ON CONSTRUCTION SEQUENCE PHASING TO PROVIDE EXIT FROM ANY ACTIVE DISTURBED AREA.



Nov 07, 2019

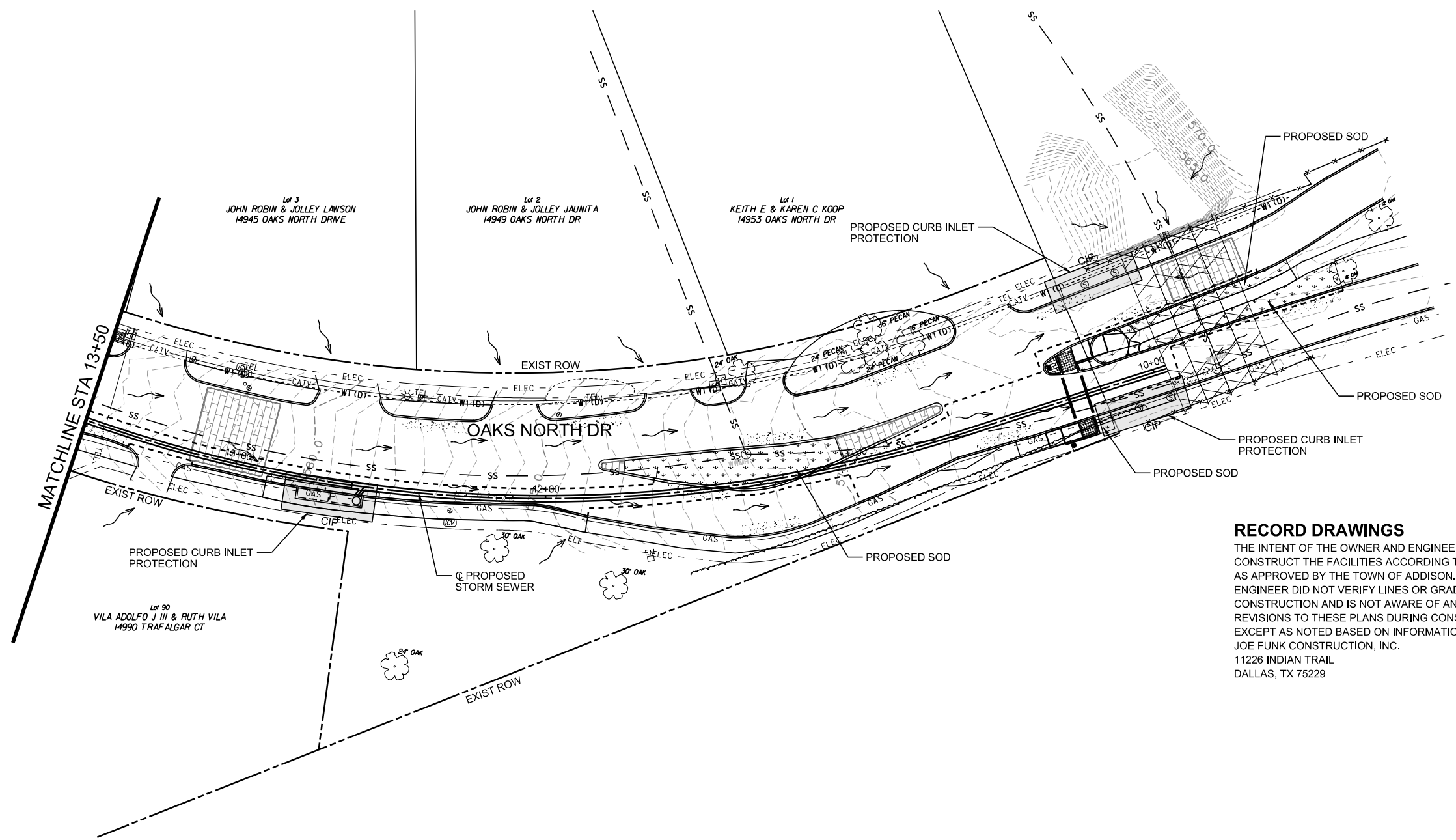
REVISIONS			
REV NO.	DATE	DESCRIPTION	BY
1			
2			



**CRIADO** 4100 SPRING VALLEY ROAD, SUITE 1001  
DALLAS, TX 75244  
O: 972-392-9092 F: 972-392-9192  
FIRM NO. F-4373

**EROSION CONTROL PLAN  
BEGIN TO STA. 13+50  
OAKS NORTH DRIVE  
DRAINAGE IMPROVEMENTS  
TOWN OF ADDISON, TEXAS**

DESIGN	DRAWN	DATE	SCALE	NOTES	FILE	NO.
CRIADO	CRIADO	NOV 2019	AS SHOWN	R14285.01	EC-01	17



**RECORD DRAWINGS**

THE INTENT OF THE OWNER AND ENGINEER WAS TO CONSTRUCT THE FACILITIES ACCORDING TO THESE PLANS AS APPROVED BY THE TOWN OF ADDISON. THE OWNER OR ENGINEER DID NOT VERIFY LINES OR GRADES AFTER CONSTRUCTION AND IS NOT AWARE OF ANY CHANGES OR REVISIONS TO THESE PLANS DURING CONSTRUCTION EXCEPT AS NOTED BASED ON INFORMATION PROVIDED BY: JOE FUNK CONSTRUCTION, INC. 11226 INDIAN TRAIL DALLAS, TX 75229

BENCHMARKS & CONTROL POINTS				
POINT	NORTHING	EASTING	ELEVATION	DESCRIPTION
COA-10	7,033,108.643	2,486,403.339	593.89	2" BRASS DISK STAMPED "TXDOT COA-10 GPS"
COA-5	7,036,216.214	2,482,155.872	630.10	2" BRASS DISK STAMPED "TXDOT COA-5 GPS"

BMP	INSTALLATION	DATE	REMOVAL	DATE
INLET PROTECTION	PRIOR TO CONSTRUCTION		AFTER FINAL STABILIZATION OF SITE	
INLET PROTECTION	AFTER INSTALLATION / PRIOR TO PAVING		AFTER FINAL STABILIZATION OF SITE	
SOD/STABILIZED EMBANKMENTS	PRIOR TO CONSTRUCTION		AFTER FINAL STABILIZATION OF SITE	

**EROSION CONTROL CONSTRUCTION PLAN**

DATE: 11/18/2020 TIME: 12:06:36 PM FILE NAME: N:\PROJECTS\R14285.00\_A Addison\_2017 Various Projects\R14285.01\_White Rock Drainage\07\_DGN\076\_Sheet1428501\_EC\_01.dgn