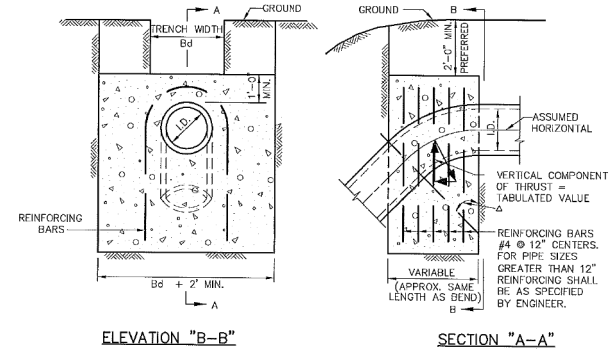
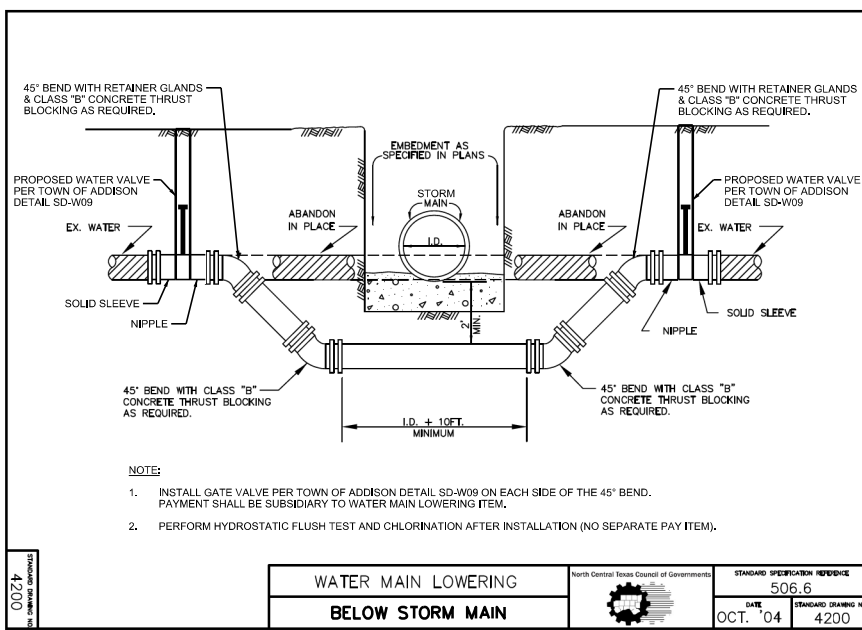


 PUBLIC WORKS DEPARTMENT	P.V.C. WATER MAIN EMBEDMENT	STANDARD CONSTRUCTION DETAILS WATER		
		DATE: AUGUST, 2010	REV DATE: -	SHEET: SD-W01

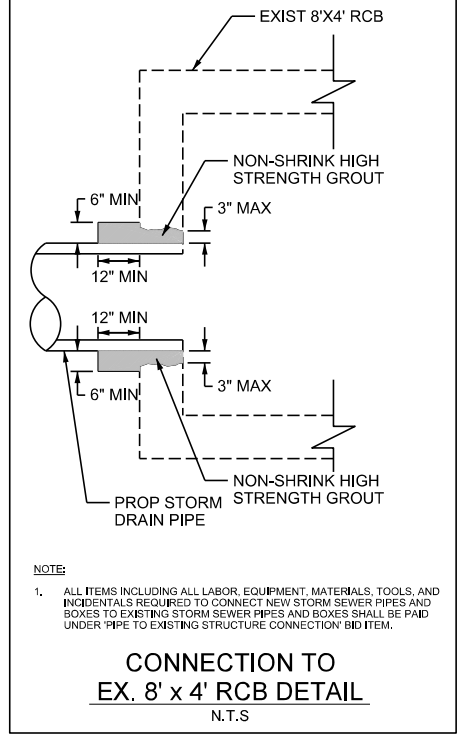


A	11.25'	22.50'	30'	45'	67.50'	90'	A
I.D. (IN.)	4.5, 8	10, 12	16, 18	20	24	28	4, 6, 8
THRUST (TONS)	1.0	2.2	4.3	7.9	13.3	20.5	2.5
VOL. (C.Y.)	0.5	1.1	2.2	4.3	7.9	13.3	2.5
THRUST (TONS)	2.0	4.3	8.0	15.7	27.2	44.8	5.0
VOL. (C.Y.)	1.0	2.2	4.3	8.0	15.7	27.2	5.0
THRUST (TONS)	3.0	6.5	12.3	23.6	42.9	73.3	15.0
VOL. (C.Y.)	1.5	3.3	6.5	12.3	23.6	42.9	15.0
THRUST (TONS)	4.0	8.6	16.0	31.3	57.0	98.0	20.0
VOL. (C.Y.)	2.0	4.4	8.6	16.0	31.3	57.0	20.0
THRUST (TONS)	5.0	10.7	20.0	39.6	72.0	124.0	25.0
VOL. (C.Y.)	2.5	5.5	10.7	20.0	39.6	72.0	25.0
THRUST (TONS)	6.0	12.9	24.7	48.0	89.0	151.0	30.0
VOL. (C.Y.)	3.0	6.6	12.9	24.7	48.0	89.0	30.0
THRUST (TONS)	7.0	15.1	29.0	56.3	103.0	176.0	35.0
VOL. (C.Y.)	3.5	7.7	15.1	29.0	56.3	103.0	35.0
THRUST (TONS)	8.0	17.3	33.3	64.6	120.0	203.0	40.0
VOL. (C.Y.)	4.0	8.8	33.3	64.6	120.0	203.0	40.0
THRUST (TONS)	9.0	19.5	38.6	75.9	140.0	240.0	45.0
VOL. (C.Y.)	4.5	10.0	38.6	75.9	140.0	240.0	45.0
THRUST (TONS)	10.0	21.7	43.9	88.2	163.0	282.0	50.0
VOL. (C.Y.)	5.0	11.1	43.9	88.2	163.0	282.0	50.0
THRUST (TONS)	11.0	23.9	49.2	101.5	189.0	331.0	55.0
VOL. (C.Y.)	5.5	12.2	49.2	101.5	189.0	331.0	55.0
THRUST (TONS)	12.0	26.1	54.5	114.8	217.0	380.0	60.0
VOL. (C.Y.)	6.0	13.3	54.5	114.8	217.0	380.0	60.0
THRUST (TONS)	13.0	28.3	60.8	129.1	247.0	430.0	65.0
VOL. (C.Y.)	6.5	14.4	60.8	129.1	247.0	430.0	65.0
THRUST (TONS)	14.0	30.5	67.1	144.4	279.0	480.0	70.0
VOL. (C.Y.)	7.0	15.5	67.1	144.4	279.0	480.0	70.0
THRUST (TONS)	15.0	32.7	73.4	160.7	313.0	530.0	75.0
VOL. (C.Y.)	7.5	16.6	73.4	160.7	313.0	530.0	75.0
THRUST (TONS)	16.0	34.9	80.7	177.0	349.0	580.0	80.0
VOL. (C.Y.)	8.0	17.7	80.7	177.0	349.0	580.0	80.0
THRUST (TONS)	17.0	37.1	88.0	194.3	387.0	630.0	85.0
VOL. (C.Y.)	8.5	18.8	88.0	194.3	387.0	630.0	85.0
THRUST (TONS)	18.0	39.3	95.3	211.6	427.0	680.0	90.0
VOL. (C.Y.)	9.0	20.0	95.3	211.6	427.0	680.0	90.0
THRUST (TONS)	19.0	41.5	102.6	228.9	469.0	730.0	95.0
VOL. (C.Y.)	9.5	21.1	102.6	228.9	469.0	730.0	95.0
THRUST (TONS)	20.0	43.7	110.9	247.2	513.0	780.0	100.0
VOL. (C.Y.)	10.0	22.2	110.9	247.2	513.0	780.0	100.0

 PUBLIC WORKS DEPARTMENT	VERTICAL THRUST BLOCK AT PIPE BEND	STANDARD CONSTRUCTION DETAILS WATER		
		DATE: AUGUST, 2010	REV DATE: -	SHEET: SD-W08



 PUBLIC WORKS DEPARTMENT	WATER MAIN LOWERING BELOW STORM MAIN	STANDARD CONSTRUCTION DETAILS WATER		
		DATE: OCT. '04	REV DATE: -	SHEET: 4200

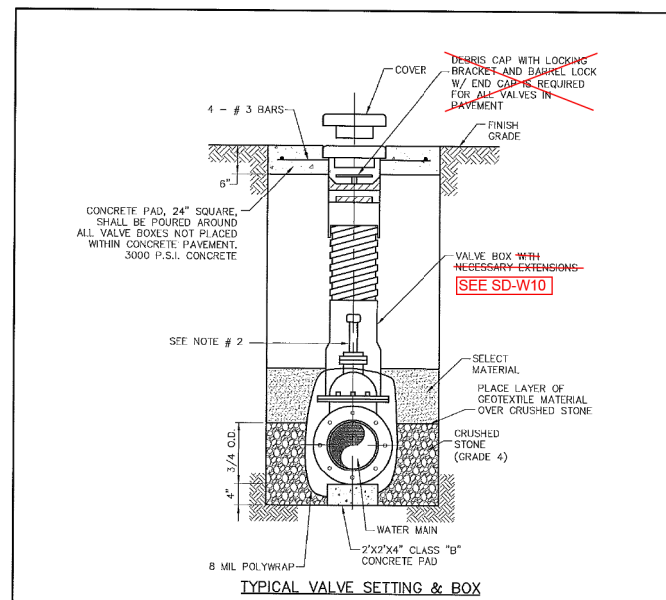


RECORD DRAWINGS

THE INTENT OF THE OWNER AND ENGINEER WAS TO CONSTRUCT THE FACILITIES ACCORDING TO THESE PLANS AS APPROVED BY THE TOWN OF ADDISON. THE OWNER OR ENGINEER DID NOT VERIFY LINES OR GRADES AFTER CONSTRUCTION AND IS NOT AWARE OF ANY CHANGES OR REVISIONS TO THESE PLANS DURING CONSTRUCTION EXCEPT AS NOTED BASED ON INFORMATION PROVIDED BY: JOE FUNK CONSTRUCTION, INC. 11226 INDIAN TRAIL DALLAS, TX 75229

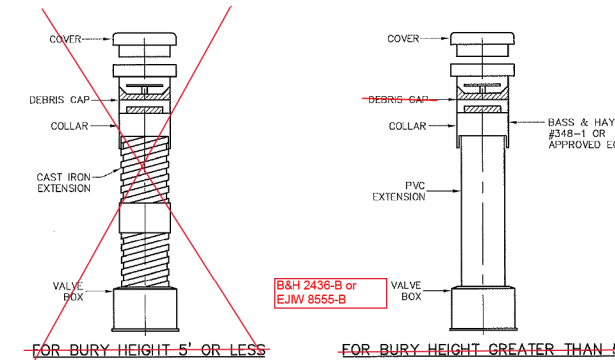


Nov 07, 2019



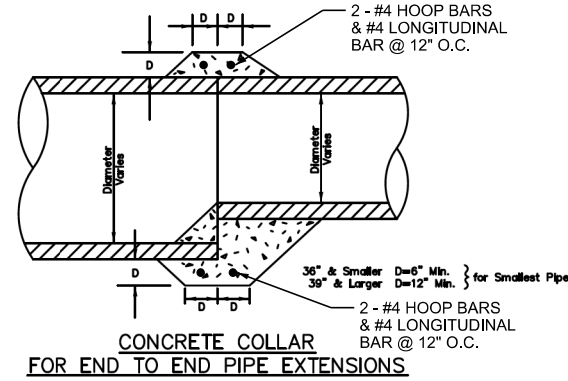
- NOTE:
- 4" - 12" R.S. GATE VALVES SHALL BE IN ACCORDANCE WITH TOWN OF ADDISON WATER SYSTEM REQUIREMENTS.
 - A PERMANENTLY ATTACHED VALVE EXTENSION STEM SHALL BE REQUIRED FOR ANY VALVE WHERE THE OPERATING NUT IS LOCATED IN EXCESS OF 5 FEET BELOW THE TOP OF VALVE BOX. THIS EXTENSION SHALL BE OF SUFFICIENT LENGTH TO INSURE THAT ITS TOP IS WITHIN 5 FEET OF VALVE BOX I.D.
 - BLUE "V" (3") CUT INTO FACE OF NEAREST CURB AND POINTING TOWARD THE VALVE.
 - ALL IRON MATERIALS SHALL BE DOMESTIC (MADE IN USA)
 - CRUSHED STONE SHALL BE 3/4", PASSING #4 SIEVE.

 PUBLIC WORKS DEPARTMENT	VALVE SETTING BOX	STANDARD CONSTRUCTION DETAILS WATER		
		DATE: AUGUST, 2010	REV DATE: 04/06/17	SHEET: SD-W09

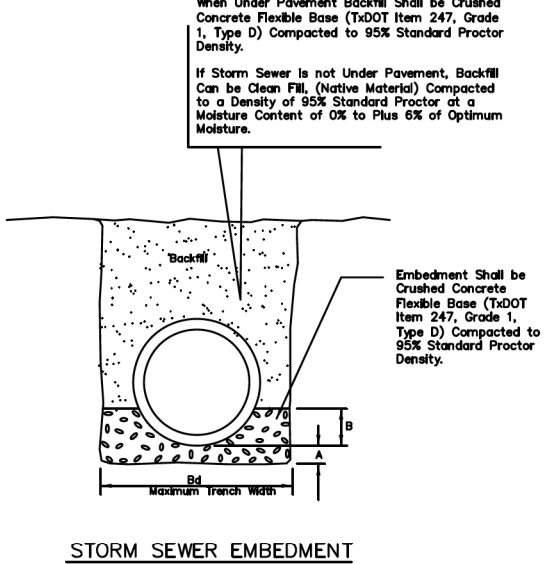


- NOTE
- ALL CAST IRON FITTINGS SHALL BE DOMESTIC (MADE IN U.S.A.)
 - VALVE BOXES SHALL BE PROVIDED FOR BURIED VALVES. THESE BOXES SHALL BE THREE (3) PIECE SCREW TYPE CAST IRON OF THE EXTENSION TYPE AND SHALL BE BASS & HAYS THREE (3) PIECE ADJUSTABLE SCREW TYPE EAST JORDAN IRON WORKS B560-W/8800-LIB, MUELLER NO. H-10360 OR APPROVED EQUAL. THE THREE (3) PIECES SHALL CONSIST OF THE TOP SECTION, BOTTOM SECTION AND COVER.

 PUBLIC WORKS DEPARTMENT	VALVE BOX WITH EXTENSION	STANDARD CONSTRUCTION DETAILS WATER		
		DATE: AUGUST, 2010	REV DATE: JANUARY 2017	SHEET: SD-W10



Pipe Dia. (in.)	Bd. (in.)	A (in.)	B (1/4 O.D.) (in.)
15	35	4	5
18	39	4	6
21	42	4	7
24	46	4	7
27	49	5	8
30	53	5	9
33	57	5	10
36	60	5	11
39	72	6	12
42	75	6	13
45	78	6	14
48	82	7	15
51	85	7	15
54	89	8	16
60	96	8	18
66	102	8	20
72	108	8	22
78	114	8	23
84	120	8	25
90	126	8	27
96	132	8	29



REVISIONS			
REV NO.	DATE	DESCRIPTION	BY



CRIADO 4100 SPRING VALLEY ROAD, SUITE 1001 DALLAS, TX 75244
O: 972-392-9092 F: 972-392-9192
FIRM NO. F-4373

CONSTRUCTION DETAILS SHEET 5 OF 6

OAKS NORTH DRIVE DRAINAGE IMPROVEMENTS

TOWN OF ADDISON, TEXAS

DESIGN	DRAWN	DATE	SCALE	NOTES	FILE	NO.
CRIADO	CRIADO	NOV 2019	AS SHOWN	R14285.01	DETAILS	CD-05

DATE: 11/18/2020
TIME: 12:06:16 PM
FILE NAME: N:\PROJECTS\R14285.01_White_Rock_Drainage\07_DON0706_SheetR1428501_Details.dgn