

STABILIZED CONSTRUCTION ACCESS

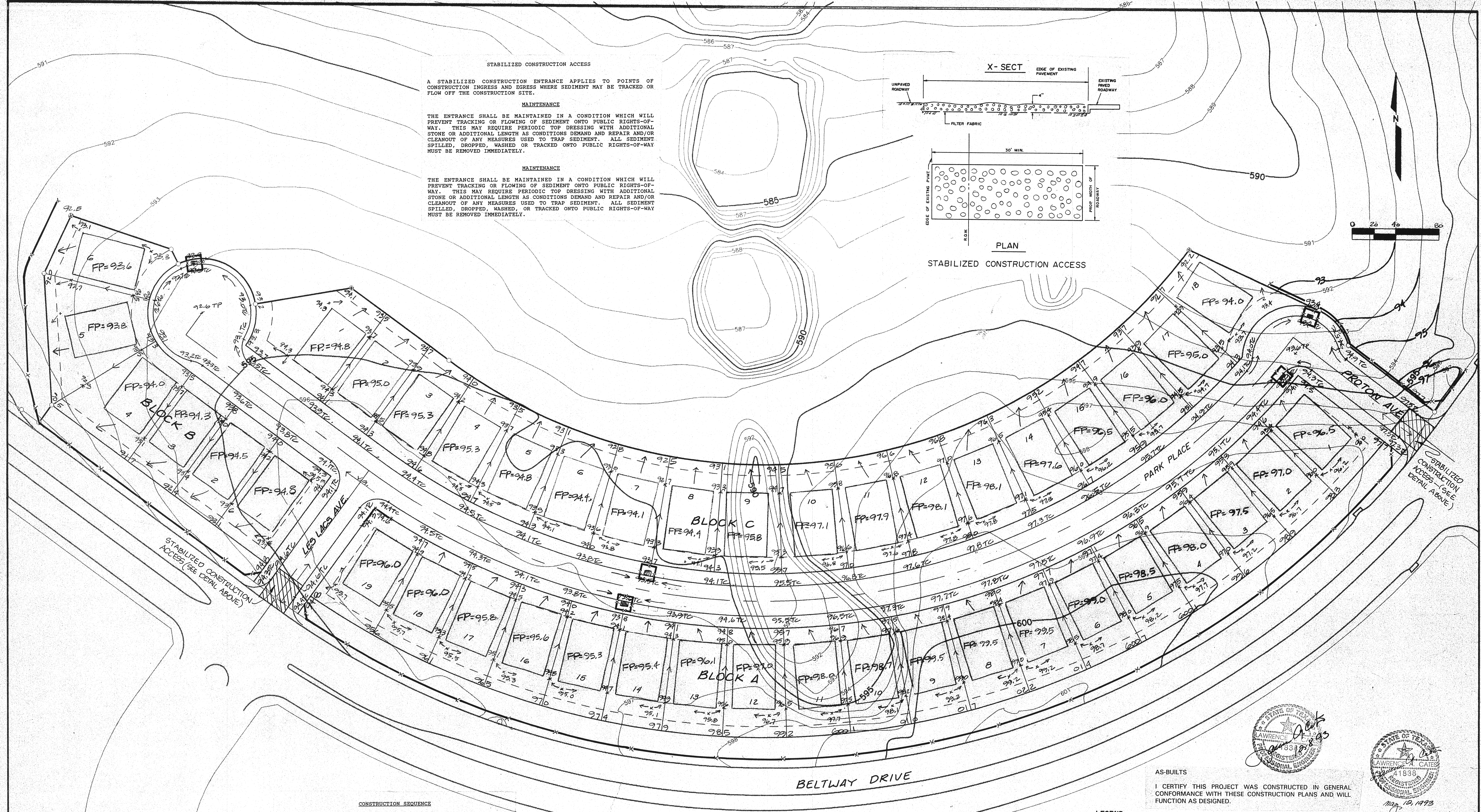
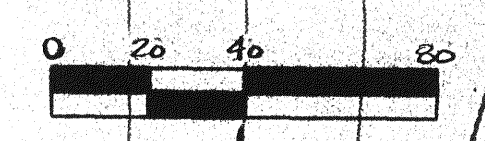
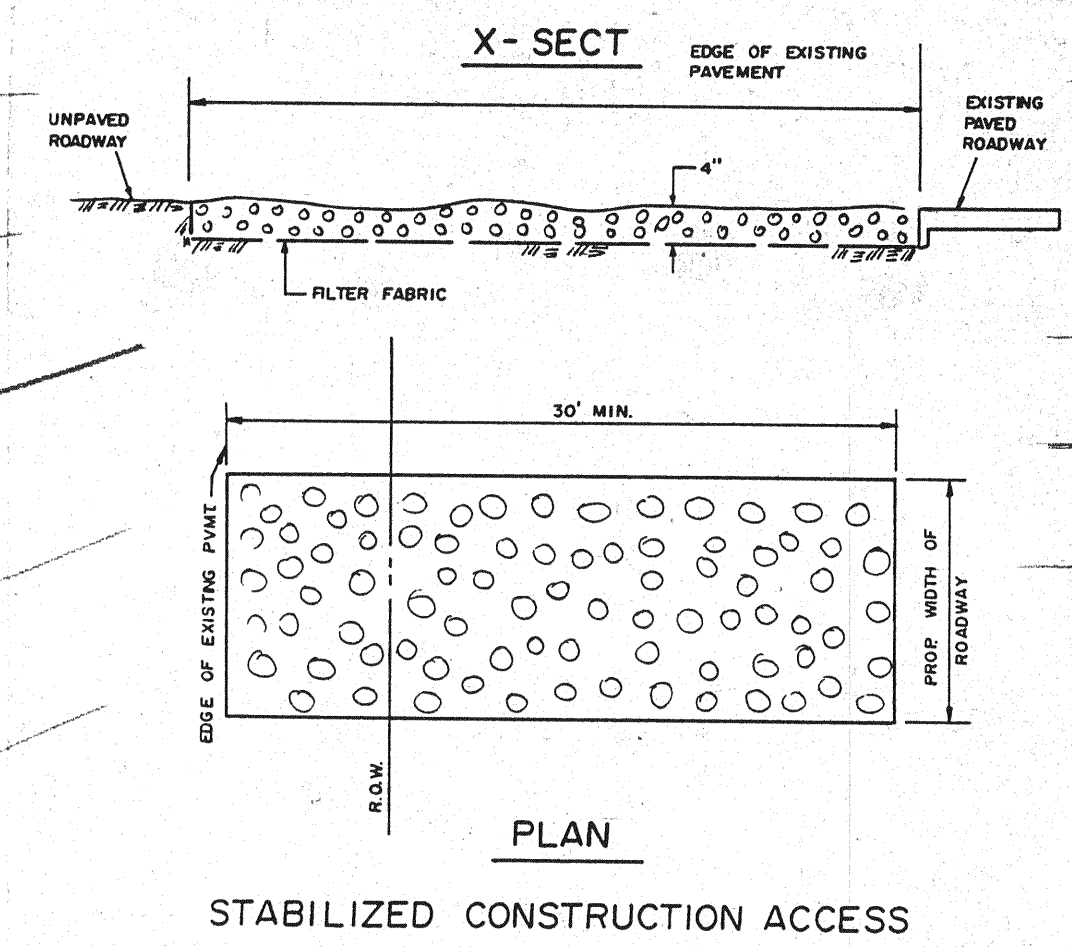
A STABILIZED CONSTRUCTION ENTRANCE APPLIES TO POINTS OF CONSTRUCTION INGRESS AND EGRESS WHERE SEDIMENT MAY BE TRACKED OR FLOW OFF THE CONSTRUCTION SITE.

MAINTENANCE

THE ENTRANCE SHALL BE MAINTAINED IN A CONDITION WHICH WILL PREVENT TRACKING OR FLOWING OF SEDIMENT ONTO PUBLIC RIGHTS-OF-WAY. THIS MAY REQUIRE PERIODIC TOP DRESSING WITH ADDITIONAL STONE OR ADDITIONAL LENGTH AS CONDITIONS DEMAND AND REPAIR AND/OR CLEANOUT OF ANY MEASURES USED TO TRAP SEDIMENT. ALL SEDIMENT SPILLED, DROPPED, WASHED, OR TRACKED ONTO PUBLIC RIGHTS-OF-WAY MUST BE REMOVED IMMEDIATELY.

MAINTENANCE

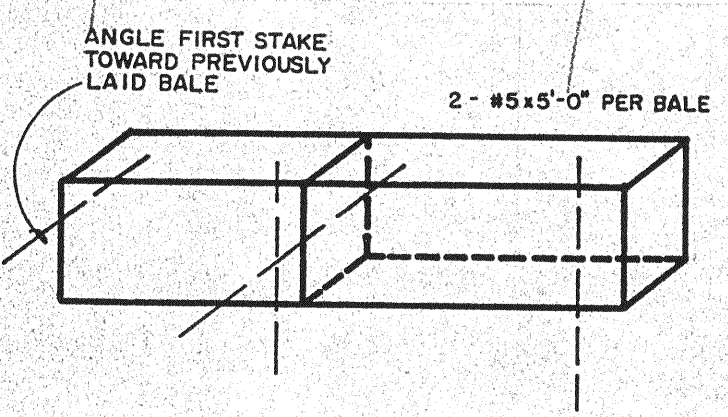
THE ENTRANCE SHALL BE MAINTAINED IN A CONDITION WHICH WILL PREVENT TRACKING OR FLOWING OF SEDIMENT ONTO PUBLIC RIGHTS-OF-WAY. THIS MAY REQUIRE PERIODIC TOP DRESSING WITH ADDITIONAL STONE OR ADDITIONAL LENGTH AS CONDITIONS DEMAND AND REPAIR AND/OR CLEANOUT OF ANY MEASURES USED TO TRAP SEDIMENT. ALL SEDIMENT SPILLED, DROPPED, WASHED, OR TRACKED ONTO PUBLIC RIGHTS-OF-WAY MUST BE REMOVED IMMEDIATELY.



STABILIZED CONSTRUCTION ACCESS (SEE DETAIL ABOVE)

STABILIZED CONSTRUCTION ACCESS (SEE DETAIL ABOVE)

- CONSTRUCTION SEQUENCE**
- OBTAIN GRADING PERMIT.
 - INSTALL ALL EROSION CONTROL MEASURES AND DEVICES BEFORE CLEARING SITE IF POSSIBLE.
 - CLEAR SITE.
 - INSTALL ANY REMAINING CONTROL MEASURES AND DEVICES THAT COULD NOT BE INSTALLED PRIOR TO SITE CLEARING.
 - GRADE SITE.
 - INSTALL ALL UNDERGROUND UTILITIES.
 - INSTALL HAY BALES AROUND CATCH BASINS AND INLETS.
 - INSTALL PAVEMENT.
 - SEED ALL AREAS OUTSIDE CONSTRUCTION LIMITS - SEWER OUTFALL AND WATER LINE RIGHT OF WAYS, CUT/FILL SLOPES WITHIN THIRTY (30) WORKING DAYS AFTER GRADING WORK HAS BEEN COMPLETED AND UTILITY LINES HAVE BEEN ACCEPTED BY THE CITY.
 - INSPECT AND MAINTAIN ALL EROSION CONTROL MEASURES AND DEVICES AFTER EACH RAIN AND FOR THE DURATION OF CONSTRUCTION.
 - CONTRACTOR TO PROVIDE ADDITIONAL EROSION CONTROL AS NEEDED AND REQUESTED BY THE CITY OR ENGINEER IF PROPOSED EROSION CONTROL IS INSUFFICIENT.



HAY BALE PLACEMENT FOR EROSION CONTROL. N.T.S.

NOTES:

- HAY BALES TO BE PLACED 4" INTO GROUND.
- WHEN SILT DEPTHS ARE 6" THE SILT SHALL BE REMOVED.

— X — DENOTES HAY BALES

NOTE: SEE LOT GRADING PLAN, SHT. C-10 FOR CORRECT ELEVATIONS AS BUILT.

- NOTE:**
- ALL AREAS DISTURBED DURING CONSTRUCTION OUTSIDE THE LIMITS OF THE PROJECT SHALL BE RESTORED AND HYDROMULCHED WITH BERMUDA.
 - ALL SPOILS SHALL BE USED ONSITE OR REMOVED FROM ADDISON AND PROPERLY DISPOSED OF.

BENCHMARK:

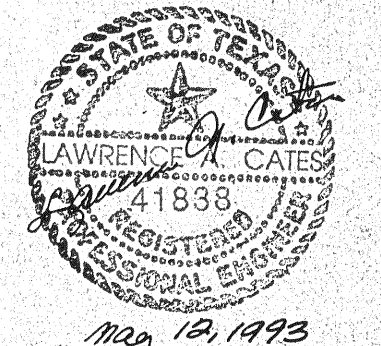
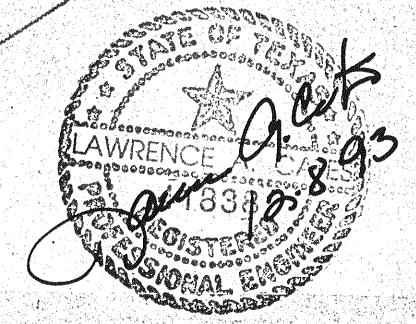
"□" CUT ON STORM SEWER INLET ON SOUTH SIDE OF BELTWAY ROAD 70' WEST OF COMMERCIAL DRIVE.

ELEV. 580.56'

- LEGEND**
- TC TOP OF CURB
 - FP FINISH PAD + 0.7' = FINISH FLOOR
 - PROP INLET
 - 591 — EXIST. CONTOUR
 - 93 — PROP CONTOUR

AS-BUILTS

I CERTIFY THIS PROJECT WAS CONSTRUCTED IN GENERAL CONFORMANCE WITH THESE CONSTRUCTION PLANS AND WILL FUNCTION AS DESIGNED.



NOTE: SEE SHEET GN-12 FOR LOT GRADING GENERAL NOTES.

REV 05-12-93 ~ ADDED STAB. ACCESS

EROSION CONTROL PLAN						
ADDISON TOWN CENTER SUBDIVISION						
TOWN OF ADDISON, TX.						
LAWRENCE A. CATES & ASSOC.						
DESIGN	DRAWN	DATE	SCALE	NOTES	FILE	NO.
L.A.C.	L.A.C.		1" = 40'		92056	C-11