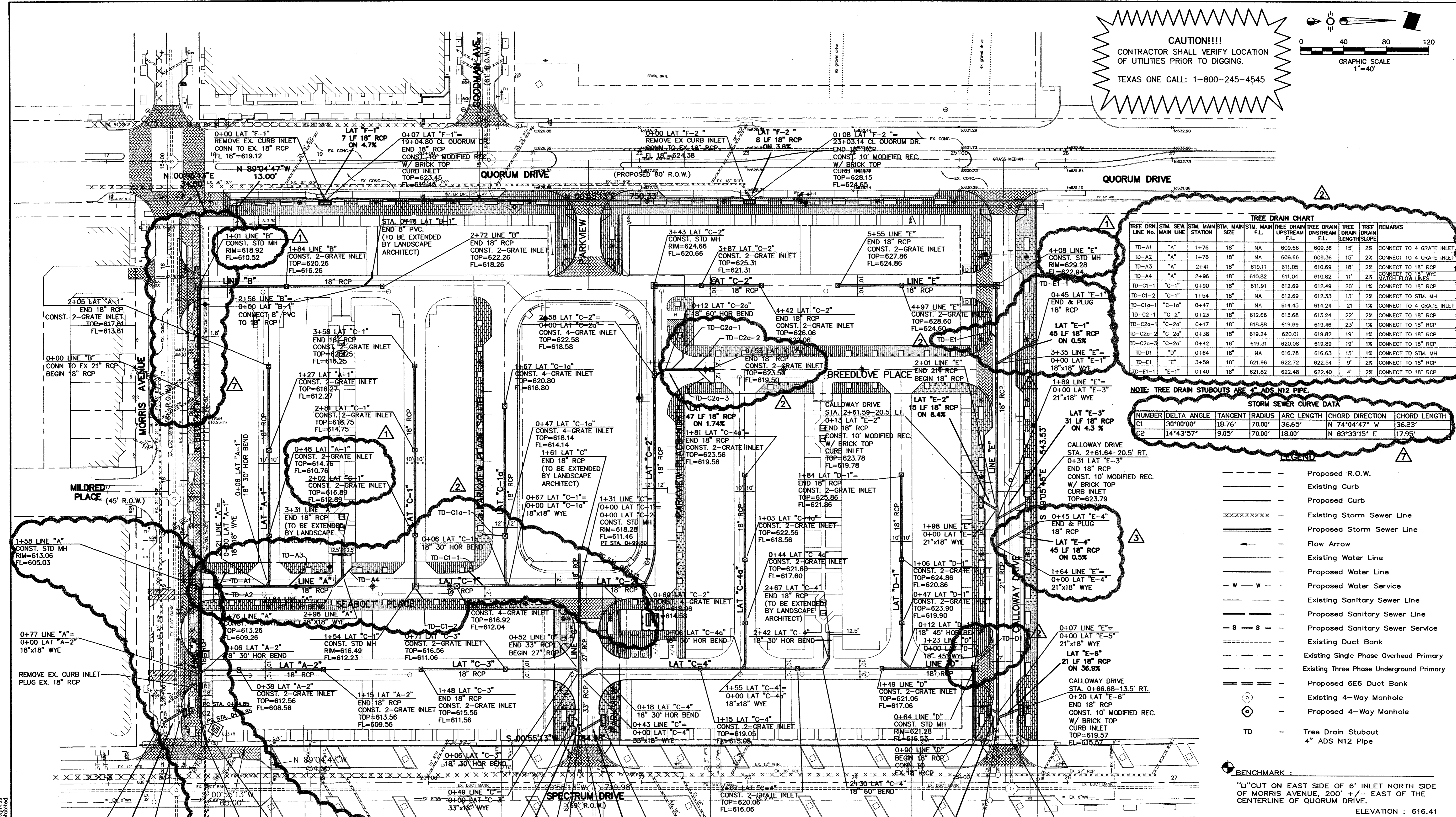
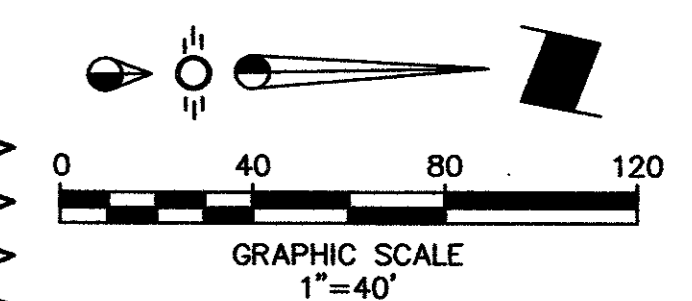


CAUTION!!!
 CONTRACTOR SHALL VERIFY LOCATION
 OF UTILITIES PRIOR TO DIGGING.
 TEXAS ONE CALL: 1-800-245-4545



TREE DRAIN CHART

TREE DRAIN LINE NO.	STM. MAIN LINE	STM. MAIN STATION	STM. MAIN SIZE	STM. MAIN F.L.	TREE DRAIN UPSTREAM F.L.	TREE DRAIN DOWNSTREAM F.L.	TREE DRAIN LENGTH	TREE DRAIN SLOPE	REMARKS
TD-A1	"A"	1+76	18"	NA	609.66	609.36	15'	2%	CONNECT TO 4 GRATE INLET
TD-A2	"A"	1+78	18"	NA	609.66	609.36	15'	2%	CONNECT TO 4 GRATE INLET
TD-A3	"A"	2+41	18"	610.11	611.05	610.69	18'	2%	CONNECT TO 18" RCP
TD-A4	"A"	2+96	18"	610.82	611.04	610.82	11'	2%	CONNECT TO 18" RCP
TD-C1-1	"C-1"	0+90	18"	611.91	612.69	612.49	20'	1%	CONNECT TO 18" RCP
TD-C1-2	"C-1"	1+54	18"	NA	612.69	612.33	13'	2%	CONNECT TO STM. MH
TD-C1a-1	"C-1a"	0+47	18"	NA	614.45	614.24	21'	1%	CONNECT TO 4 GRATE INLET
TD-C2-1	"C-2"	0+23	18"	612.66	613.68	613.24	22'	2%	CONNECT TO 18" RCP
TD-C2a-1	"C-2a"	0+17	18"	618.88	619.69	619.46	23'	1%	CONNECT TO 18" RCP
TD-C2a-2	"C-2a"	0+38	18"	619.24	620.01	619.82	19'	1%	CONNECT TO 18" RCP
TD-C2a-3	"C-2a"	0+42	18"	619.31	620.08	619.89	19'	1%	CONNECT TO 18" RCP
TD-D1	"D"	0+64	18"	NA	616.78	616.63	15'	1%	CONNECT TO STM. MH
TD-E1	"E"	3+59	18"	621.96	622.72	622.54	9'	2%	CONNECT TO 18" RCP
TD-E1-1	"E-1"	0+40	18"	621.82	622.48	622.40	4'	2%	CONNECT TO 18" RCP

NOTE: TREE DRAIN STUBOUTS ARE 4" ADS N12 PIPE.

STORM SEWER CURVE DATA

NUMBER	DELTA ANGLE	TANGENT	RADIUS	ARC LENGTH	CHORD	DIRECTION	CHORD LENGTH
C1	30°00'00"	18.76'	70.00'	36.65'	N 74°04'47" W		36.23'
C2	14°43'57"	9.05'	70.00'	18.00'	N 83°33'15" E		17.95'

- LEGEND**
- Proposed R.O.W.
 - Existing Curb
 - Proposed Curb
 - Existing Storm Sewer Line
 - ==== Proposed Storm Sewer Line
 - > Flow Arrow
 - Existing Water Line
 - Proposed Water Line
 - w - w - Proposed Water Service
 - Existing Sanitary Sewer Line
 - Proposed Sanitary Sewer Line
 - s - s - Proposed Sanitary Sewer Service
 - Existing Duct Bank
 - Existing Single Phase Overhead Primary
 - Existing Three Phase Underground Primary
 - ==== Proposed 6E6 Duct Bank
 - Existing 4-Way Manhole
 - Proposed 4-Way Manhole
 - TD - Tree Drain Stubout
4" ADS N12 Pipe

BENCHMARK:
 "D" CUT ON EAST SIDE OF 6" INLET NORTH SIDE OF MORRIS AVENUE, 200' +/- EAST OF THE CENTERLINE OF QUORUM DRIVE.
 ELEVATION: 616.41

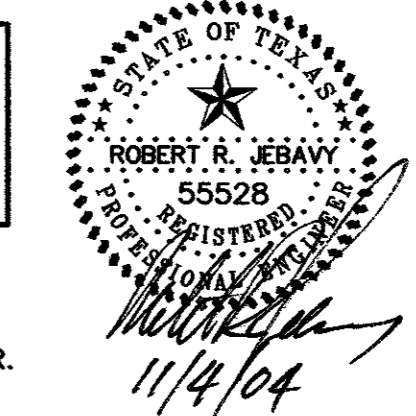
STORM SEWER PLAN
 PARKVIEW AT ADDISON CIRCLE
 TOWN OF ADDISON, TEXAS
 DALLAS COUNTY

BROCKETTE · DAVIS · DRAKE, inc.
 consulting engineers

Civil & Structural Engineering Surveying
 4144 North Central Expressway, Suite 1100 Dallas, Texas 75204
 (214) 824-3647, fax (214) 824-7064

DESIGNED	DRAWN	DATE	SCALE	NOTES	FILE	NO.
RRJ	BDD	04/04	1"=40'	BDD	C03393	C12

AS-BUILT
 NOVEMBER 4, 2004



NOTE: THESE PLANS HAVE BEEN REVISED TO CONFORM WITH CONSTRUCTION RECORDS PROVIDED BY CONTRACTOR.

- ③ RELOCATED STM. LAT. E-1 & E-4 6/04/04
- ② ADD TREE DRAIN STUB OUTS 6/04/04
- ① GRADE REVISIONS 5/20/04
- ④ ADDED TELE. CONDUIT 6/23/04

Copyright 2003 Brockette, Davis, Drake, Inc. All Rights Reserved.
 This drawing is the property of Brockette, Davis, Drake, Inc. Any modification or use of this drawing without the express written authorization of Brockette, Davis, Drake, Inc. is prohibited.