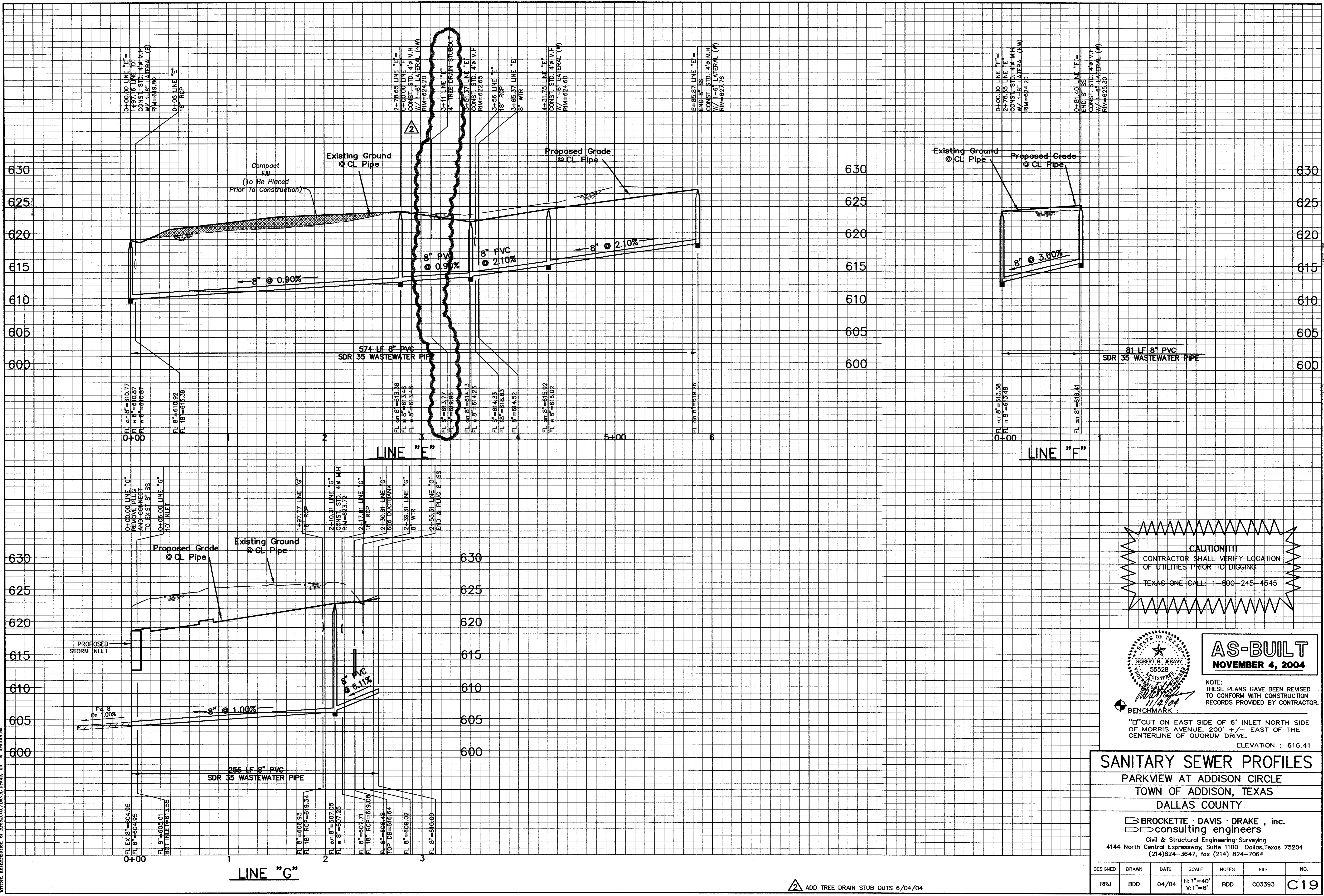


© Copyright 2003 Brockette/Davis/Drake, Inc. All Rights Reserved.
 This drawing is the property of Brockette/Davis/Drake, Inc. and is not to be reproduced, stored in a retrieval system, or transmitted in any form or by any means, electronic, mechanical, photocopying, recording, or by any information storage and retrieval system, without the prior written authorization of Brockette/Davis/Drake, Inc. is prohibited.



CAUTION!!!
 CONTRACTOR SHALL VERIFY LOCATION OF UTILITIES PRIOR TO DIGGING.
 TEXAS ONE CALL: 1-800-245-4545

AS-BUILT
NOVEMBER 4, 2004

NOTE:
 THESE PLANS HAVE BEEN REVISED TO CONFORM WITH CONSTRUCTION RECORDS PROVIDED BY CONTRACTOR.

BENCHMARK:
 "D" CUT ON EAST SIDE OF 6" INLET NORTH SIDE OF MORRIS AVENUE, 200' +/- EAST OF THE CENTERLINE OF QUORUM DRIVE.
 ELEVATION : 616.41

SANITARY SEWER PROFILES
 PARKVIEW AT ADDISON CIRCLE
 TOWN OF ADDISON, TEXAS
 DALLAS COUNTY

BROCKETTE · DAVIS · DRAKE , inc.
 consulting engineers
 Civil & Structural Engineering · Surveying
 4144 North Central Expressway, Suite 1100 Dallas, Texas 75204
 (214)824-3647, fax (214) 824-7064

DESIGNED	DRAWN	DATE	SCALE	NOTES	FILE	NO.
RRJ	BDD	04/04	H:1"=40' V:1"=6'	BDD	C03393	C19

ADD TREE DRAIN STUB OUTS 6/04/04

C03393\PLANS CD\19-SSPROF02-PTV