

TYPICAL CONDUIT INSTALLATION FOR PVC ENCASED MAJOR CONDUIT LINE

DETAIL #18

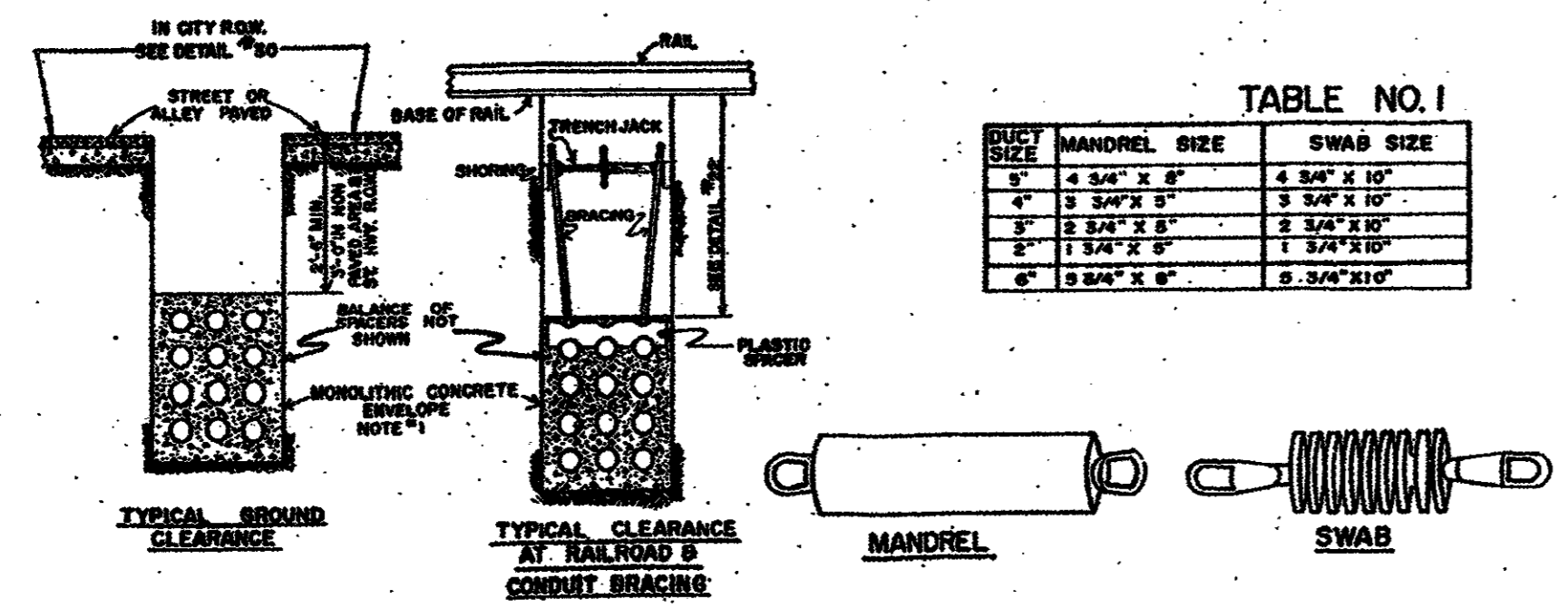
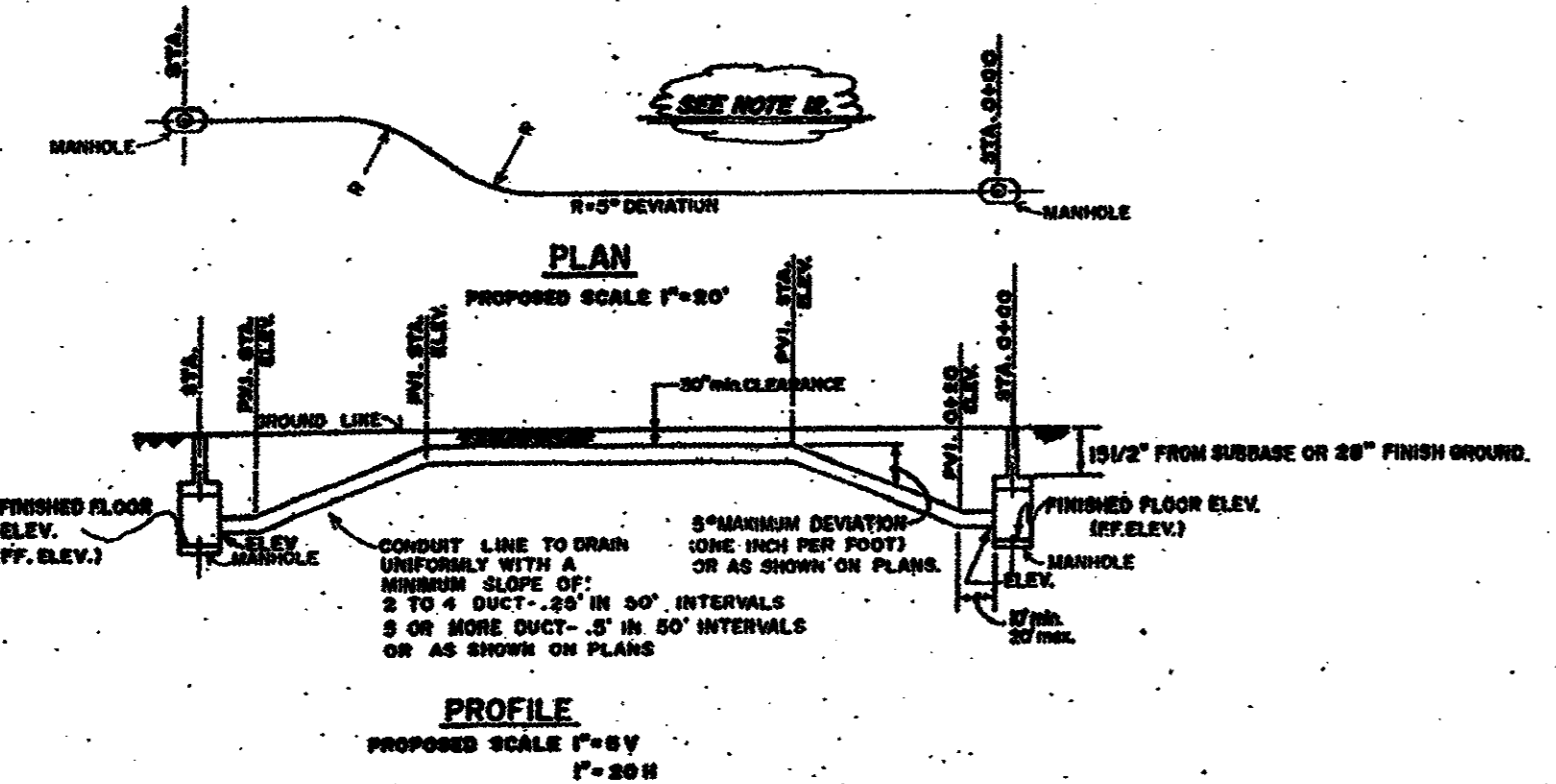


TABLE NO. 1: MANDREL SIZE vs SWAB SIZE table.



- NOTES: 1. ALL SECTIONS OF THE CONDUIT WILL BE RUN IN A STRAIGHT LINE... 2. THE CONDUIT & FITTINGS WILL BE COATED LIBERALLY WITH PVC GREASE...

SECTIONS OF TYPICAL FORMATION

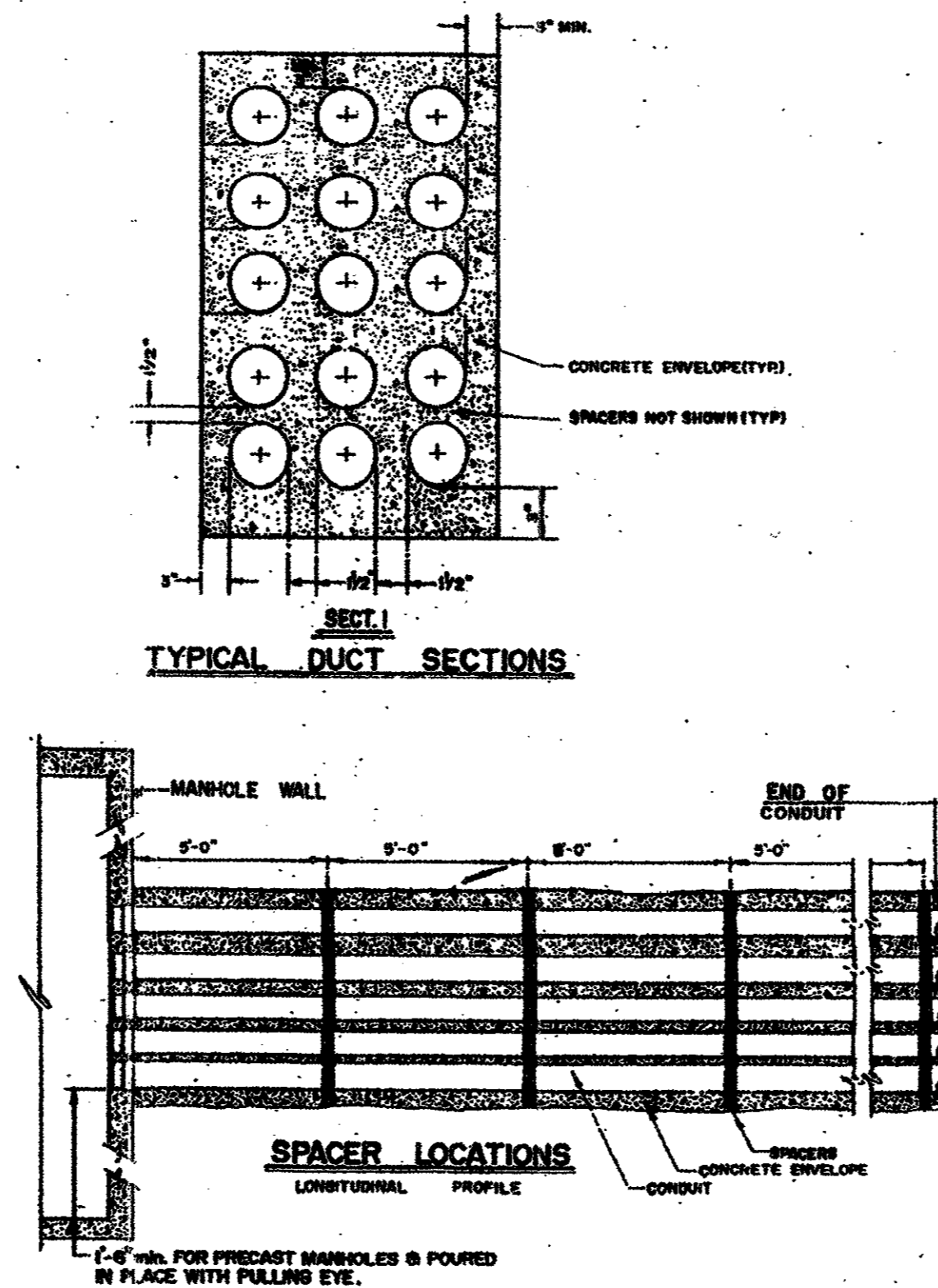
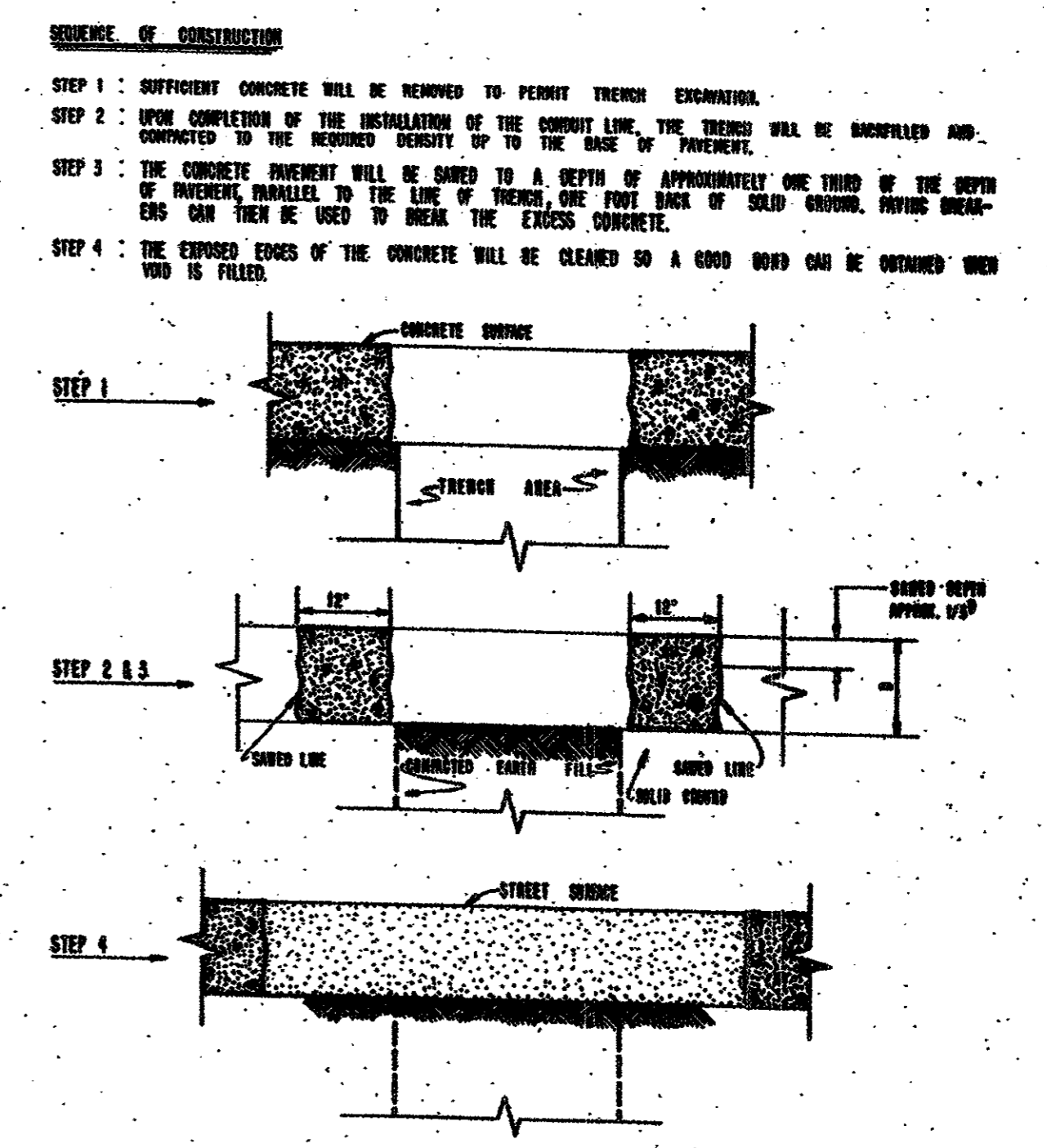


TABLE 2: CONDUIT SIZE vs OUTSIDE DIAMETER vs TYPE table.

DETAIL #19 CONCRETE SPECIFICATION

- I. GENERAL: THESE SPECIFICATIONS APPLY TO MANHOLE, WELLS, AND DUCT LINE CONSTRUCTION... II. CLASSES OF CONCRETE AND MIX DESIGN... III. DESIGN AND MIXTURE OF READY-MIX CONCRETE... IV. PROTECTION OF FORM CONCRETE... V. FINISH... VI. PLACING OF CONCRETE...

DETAIL #20



NOTE: ASPHALT DRIVE SURFACES; SEQUENCE OF CONSTRUCTION ON CONCRETE STREETS WITH ASPHALT DRIVE SURFACES WILL BE THE SAME AS SEQUENCE EXCEPT STEP 3, THE ASPHALT WILL BE CUT IN A STRAIGHT LINE...

STREET BREAKING AND REPLACEMENT DETAILS

AS-BUILT NOVEMBER 4, 2004

NOTE: THESE PLANS HAVE BEEN REVISED TO CONFORM WITH CONSTRUCTION RECORDS PROVIDED BY CONTRACTOR.

Vertical title block containing project name (TU ELECTRIC), drawing title (NETWORK UNDERGROUND APPURTENANCE SHEETS MISCELLANEOUS DETAILS), scale, date, and revision table.