

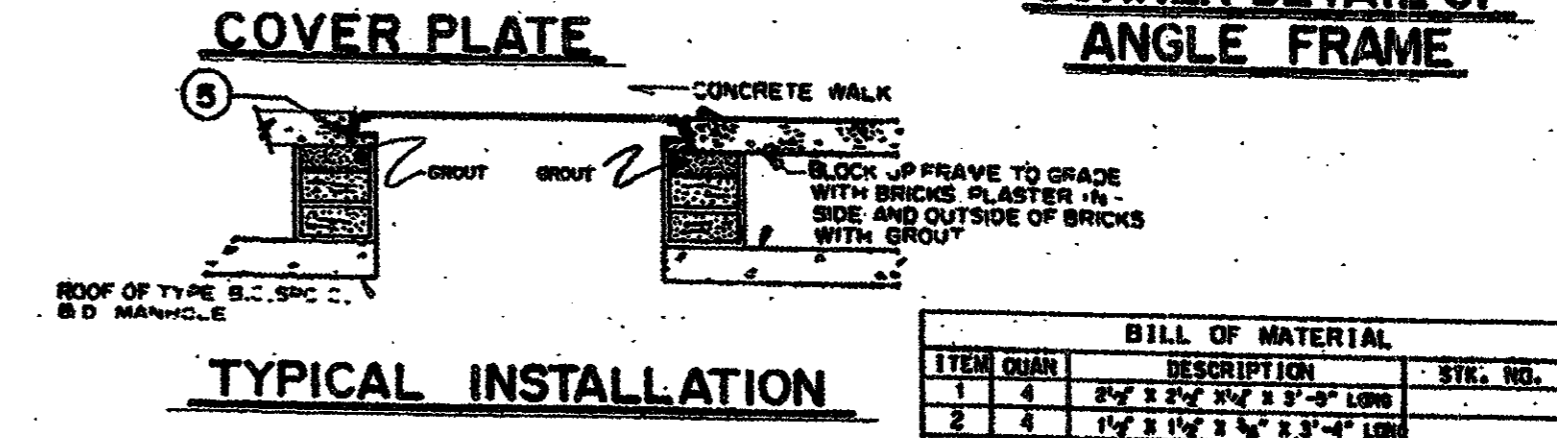
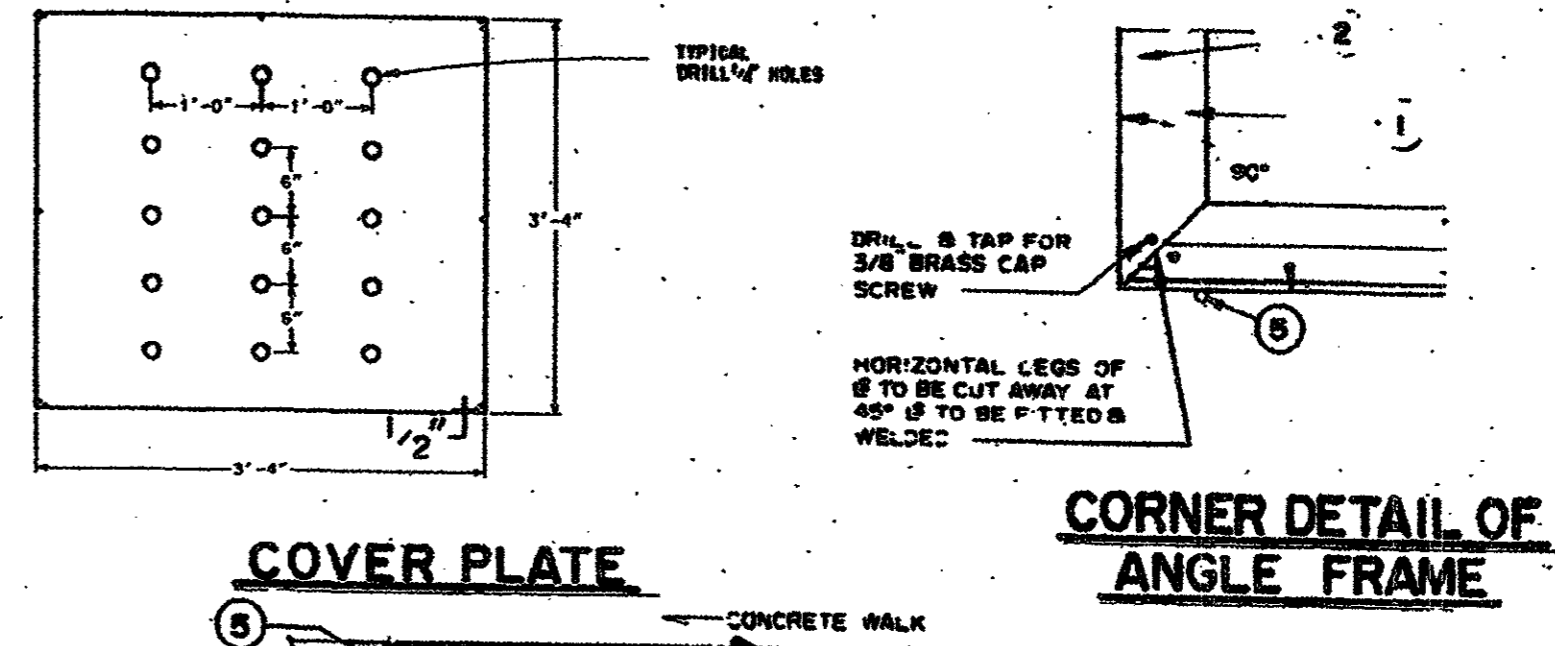
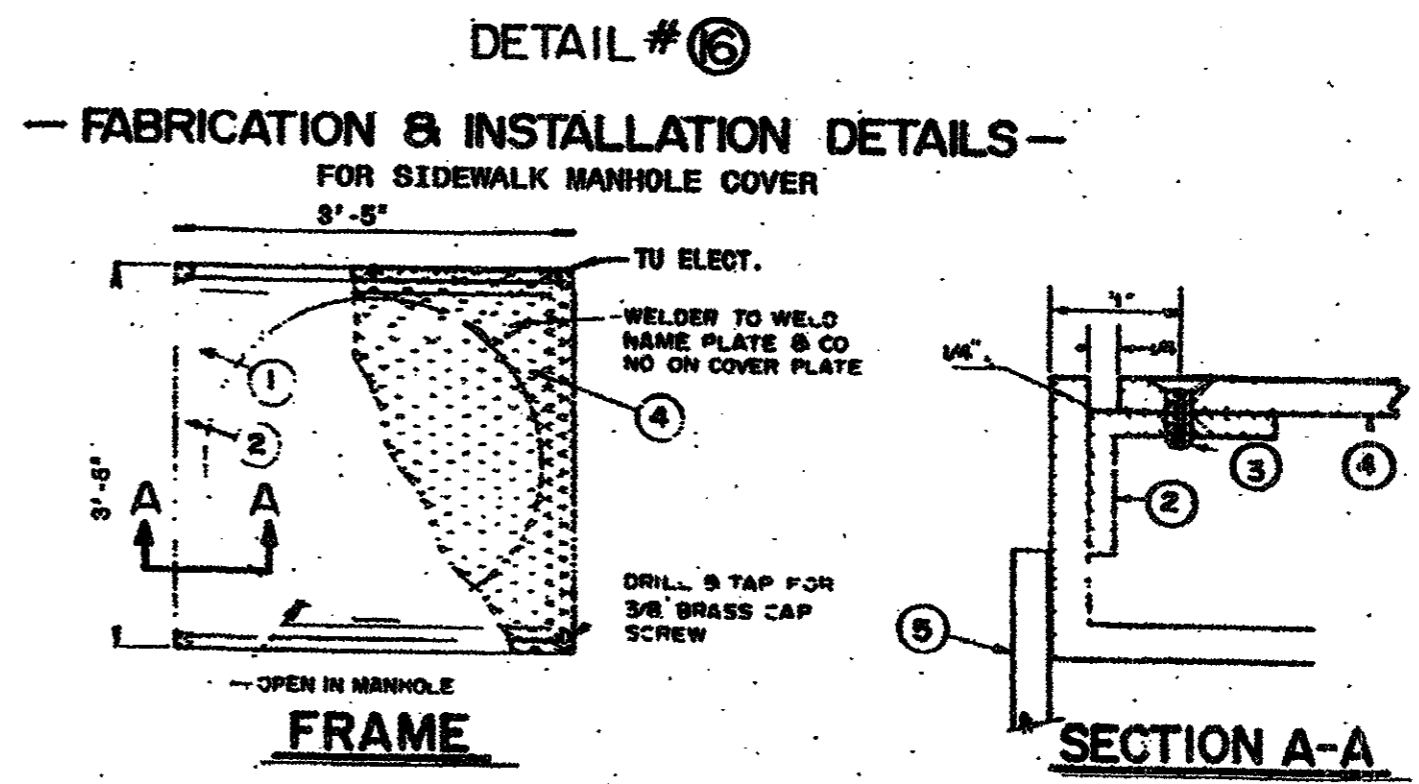
GENERAL NOTES

BEARING SURFACE BETWEEN COVER AND FRAME SHALL BE 1/4" CHINED.

COVER AND FRAME SHALL BE CONSTRUCTED TO H-20 TRAFFIC LOADING.

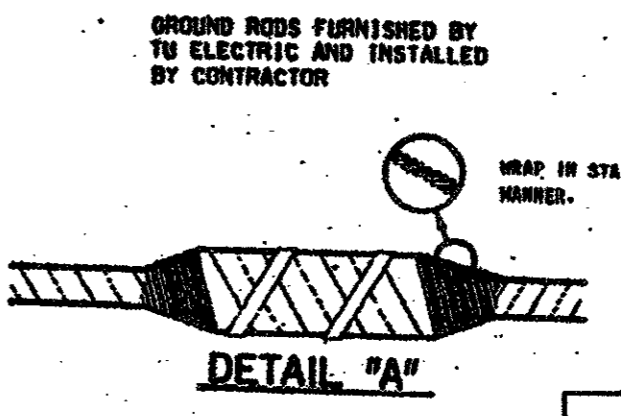
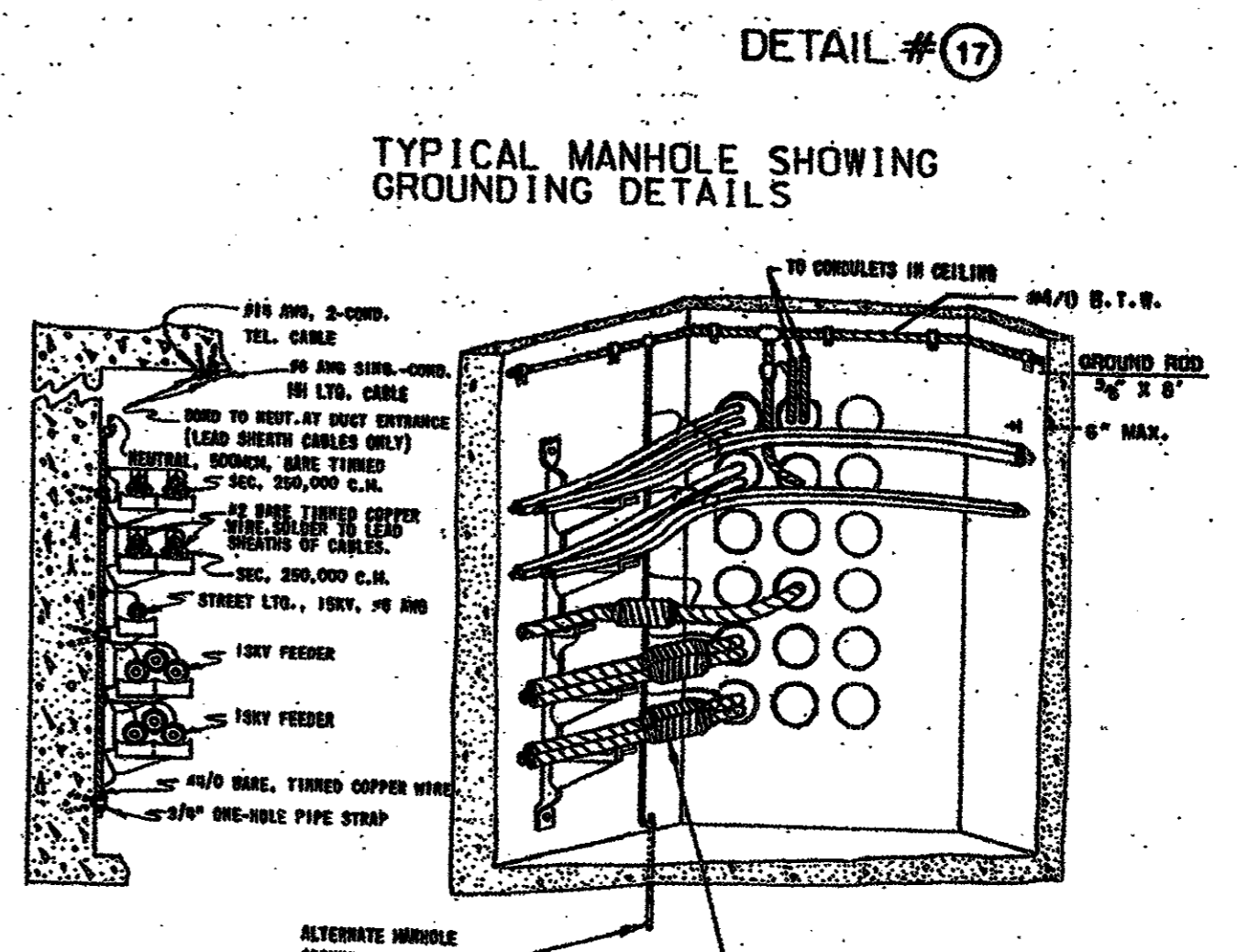
COVER AND FRAME SHALL BE CONSTRUCTED OF GRAY CAST IRON.

MANHOLE COVER AND FRAME SHALL NOT EXCEED 750 LBS.



BILL OF MATERIAL

ITEM QTY	DESCRIPTION	STG. NO.
1	4 2" X 2" X 1/4" Z PLATE	1
2	1 1/2" X 1 1/2" X 1/4" Z PLATE	1
3	1/2" X 2" BRASS CAP SCREW	2
4	3'-5" X 3'-5" X 1/4" NO. 21	1
5	4# BAR - 24'	1



AS-BUILT
NOVEMBER 4, 2004

NOTE:
THESE PLANS HAVE BEEN REVISED TO CONFORM WITH CONSTRUCTION RECORDS PROVIDED BY CONTRACTOR.

CD

TU ELECTRIC

REVISION DESCRIPTION

DATE

NO.

V.A.

APP. PIN

APP. JCS

APP. JRC

EMG. JRC

CH. JRC

DATE 05-12-92

SCALE (H=NO SCALE) (V=NO SCALE)

LIST OF DRAWINGS

M.A.

ESTIMATE

UNIT ID

ENG. TYPE

REVISION DESCRIPTION

CH.

APP.

APP.

E-NUA-1

SHEET NO.

© Copyright 2003 Brocchetto/Hawes/Drake, Inc. All Rights Reserved. No part of this drawing may be reproduced or used in any way without the express written authorization of Brocchetto/Hawes/Drake, Inc. is prohibited.