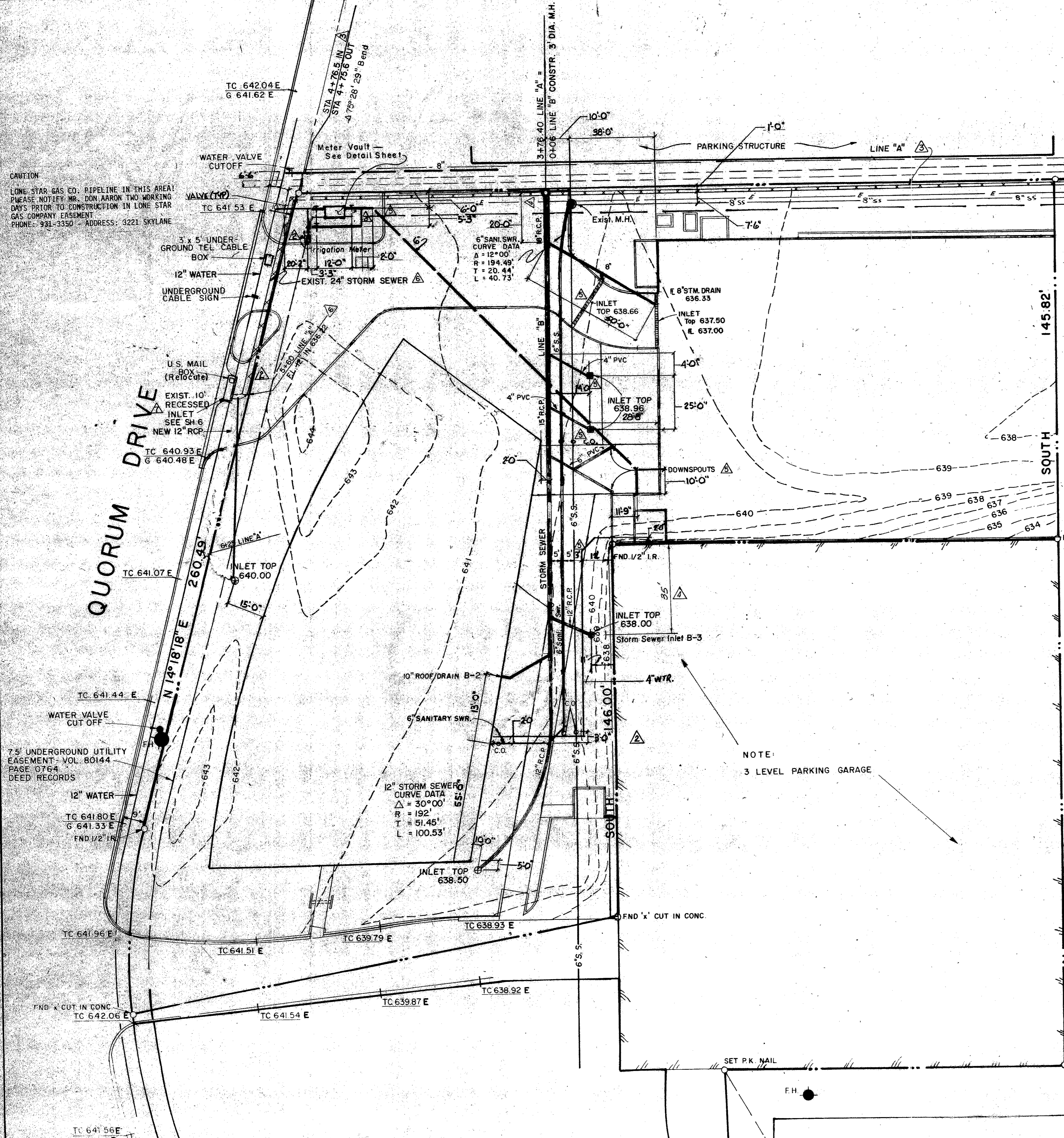


CAUTION
 LONE STAR GAS CO. PIPELINE IN THIS AREA!
 PLEASE NOTIFY MR. DON AARON TWO WORKING
 DAYS PRIOR TO CONSTRUCTION IN LONE STAR
 GAS COMPANY EASEMENT
 PHONE: 931-3350 ADDRESS: 3221 SKYLANE



Future 36" Water Line.

20' DRAINAGE & UTILITY EASEMENT
 VOL. 80144 PG. 0764 DEED RECORDS

SAN SEWER MH
 FL 628.62

6" x 6" TRANSFORMER
 PAD

20' DRAINAGE & UTILITY
 ESMT. VOL. 79100 PG. 1895
 MAP RECORDS

S01° 39' 54" E 499.19'
 0.505 AC. TRACT
 22000 SQ. FT.



DALLAS PARKWAY

- NOTE:
- Existing Elevations Shown With An "E".
 - Contractor To Verify Existence, Location, And Elevations Of Utility & Sewer Lines. Worst Case Assumed; ie Line A May Be In Existence.
 - Line A Existing Sta. 0+00 to Sta. 5+60.
 - All Drain Lines to be Connected to Main Drains at 60° Angle or Less

NOTE:
 3 LEVEL PARKING GARAGE

AS-BUILT

These drawings have been revised by the Construction Contractor to reflect "AS BUILT" conditions in accordance with his records. The Engineer has not verified the accuracy of this information and shall not be responsible for any errors or omissions which may be incorporated herein as a result. No warranty is made by the Consulting Firm nor the Engineer for accuracy.

Date _____ By _____



DATE	No.	REVISION	BY
3/27/85	1	CONVERT EXIST. INLET TO GRATE INLET	RFS
10/19/84	2	Issued For C.O. Price	RFS
9/28/84	3	Revised Storm Sewer in Quorum Drive	RFS
	4	Deleted 3" Water Line, Added Drains & Parking Space	RFS
4-26-84	5	Revised Curve Stas. Line B, Moved Inlet, Added Note, Changed Pipe Sizes.	RFS
3-27-84	6	Issued for Construction	RFS
3-19-84	7	Moved 18" Storm Sewer South of P/L Moved Meter Vault.	G.T.S.
2-29-84	8	Replaced Trough Inlet w/ Recessed Inlet. Added Irrigation Meter. Moved 3" Water Line.	G.T.S.
2-2-84	9	Gar. Entrance, Inlet Nos.	RFS

DESIGN	DRAWN	DATE	SCALE	NOTES	FILE	SHEET NO.
RLBA	BY	1-13-84	1" = 20'			3 of 7

WATER, SEWER & STORM DRAINAGE
 14850 QUORUM DRIVE
 THE MURPHREE COMPANY
 CITY OF ADDISON, TEXAS
 INTERTECH ENGINEERS, INC.