

ISSUES	06/09/97
BID SET	
REVISIONS	
06/17/97	ADDENDUM #1
06/23/97	ADDENDUM #2
	REROUTE 8" WATER LINE

14911 QUORUM DRIVE
Office Building, Addison, TX
CENTRE DEVELOPMENT CO., INC.

Job
Date 06/09/97
Drawn
Check
PRF
Sheet
C-5
Of

- General Notes:**
- All construction shall be in accordance with these plans and Town of Addison's ordinances and specifications.
 - All materials and workmanship shall conform to "Standard Specifications for Public Works", published by the North Texas Council of Governments, except as modified by the Town of Addison.
 - The location of all utilities located on these plans are taken from existing public records. The exact location and elevation of all public utilities shall be determined by the Contractor prior to construction. Contractor shall have a trench safety plan prepared for all excavation in excess of 5 feet deep. It shall be the duty of Contractor to ascertain whether any additional facilities other than those shown on the plans may be present.
 - Contractor shall secure all necessary permits and contracts prior to commencing construction.
 - It shall be the responsibility of the Contractor to protect all public utilities and other property in the construction of this project. Property damaged during this construction shall be repaired or replaced at the contractor's expense to the satisfaction of the owner.
 - Concrete blocking shall be provided on water mains at all bends and fire hydrant per City Standards.
 - Pavement affected by construction shall be replaced to match existing. Grassed areas affected shall be re-sodded with like materials.
 - All water mains shall be Ductile Iron Class 52 water pipe with Polyethylene wrap on pipe, fittings, and fire hydrant base.
 - The water line shall be constructed with a minimum of 48" of cover.
 - Set nozzle of fire hydrant at a height between 18" and 24" from finished ground elevation.
 - The Certificate of Acceptance (COA) will not be issued until all water appurtenances have been adjusted to their final position.

CAUTION!!!
Buried Fiber Optic Cable
Call 214-665-2300
48 Hours Prior To Construction

CAUTION!!!
Buried Fiber Optic Cable
Contact Mike Hendricks
972-918-1287
48 Hours Prior To Construction

$\Delta = 21'05"10"$
 $R = 777.43$
 $L = 286.11$
 $T = 144.69$
 $LC = 284.50$
 $CB = S 13'48'49" E$

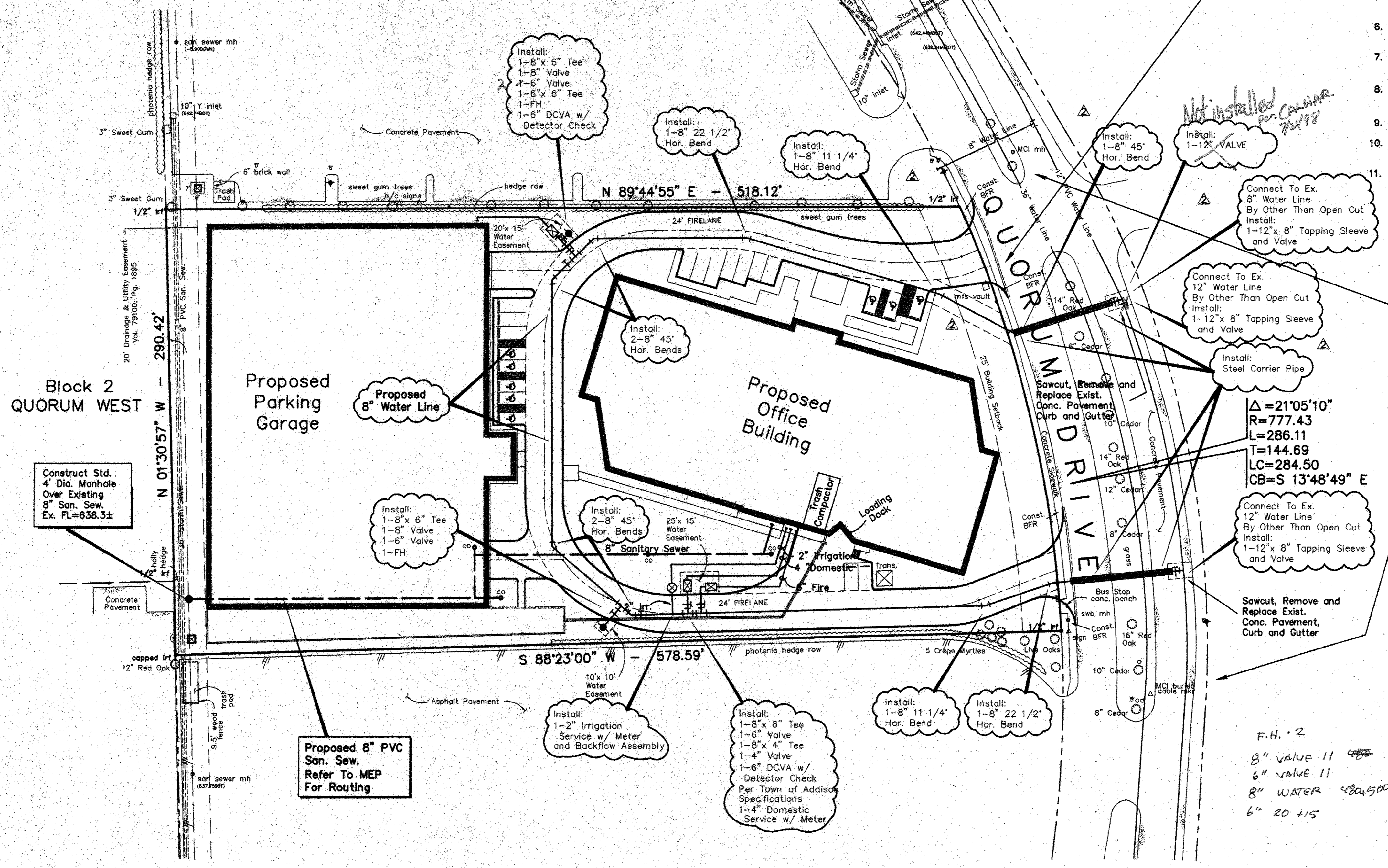
F.H. 2
8" VALVE 11
6" VALVE 11
8" WATER 484.50
6" 20 +15

LEGEND

---	Existing Curb
---	Proposed Curb
---	Sawcut
---	Expansion Joint
---	Existing Water Line
---	Proposed Water Line
---	Existing Sanitary Sewer Line
---	Proposed Sanitary Sewer Line

Benchmark
Disk In Brick Wall Of Old Addison School Bldg.
4.0' Above Ground
Elevation : 650.61

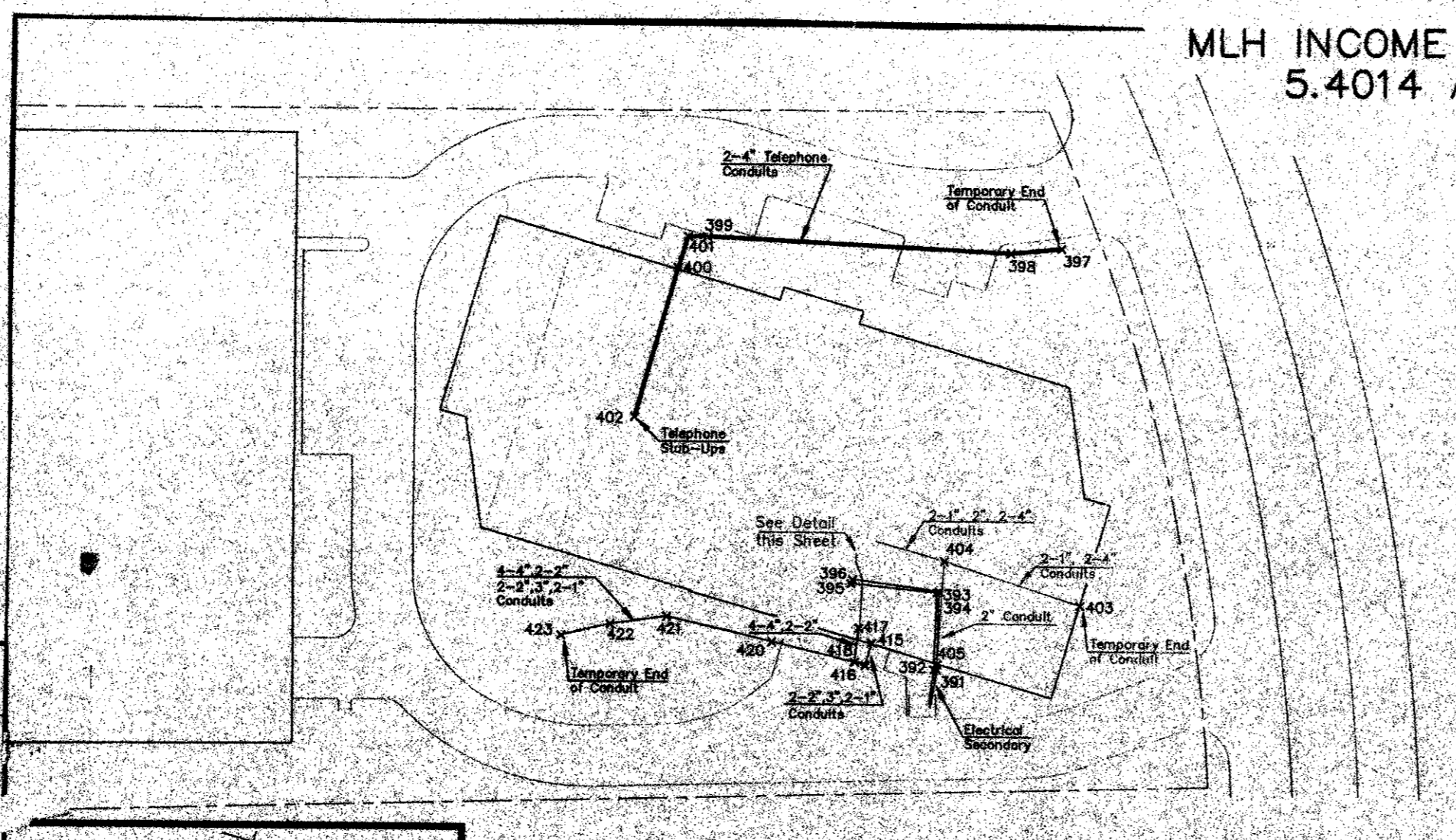
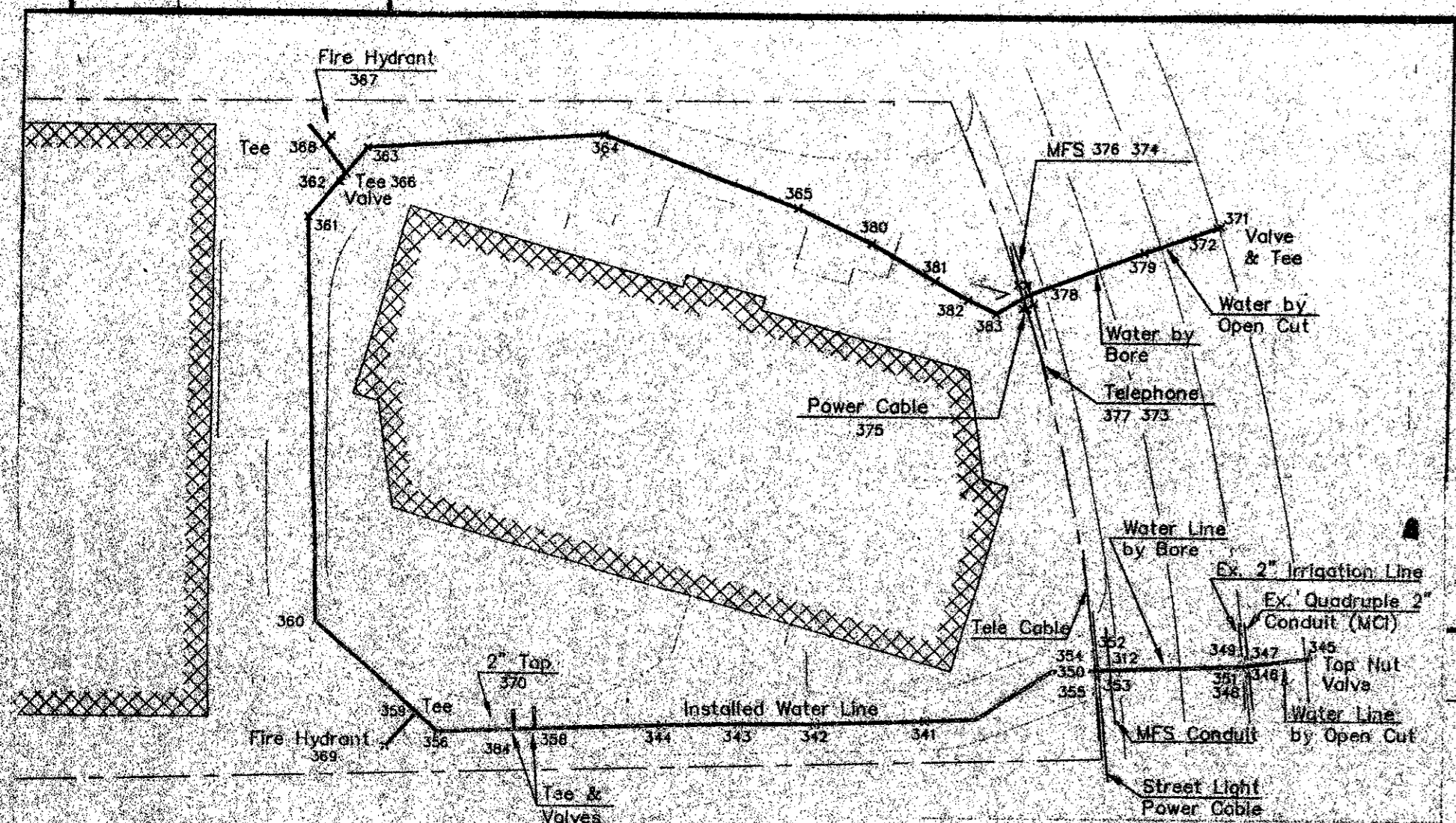
Tract B, Block 2
MARRIOTT RESIDENCE
3.473 Ac.



Location of furnished water line and exposed existing utilities.
Survey by S. Hardin, DAL-MAC Construction Co.
Weeks of 8/23/97 through 9/22/97
Coordinates based on Station Sheet provided by DMR Inc. Engineers

PTS	N	E	NORTH	ELEV	DESCRIPTION
354	4993.6543	4874.8386	642.00	h	top of water pipe
383	5149.8218	5099.2182	641.01	h	top of water pipe
382	5157.9639	5055.9814	641.84	w	top of water pipe
381	5123.9294	5053.3004	642.57	w	top of water pipe
380	5097.8777	5079.3968	643.01	w	top of water pipe
379	5211.8461	5076.2657	643.00	w	top of water pipe
378	5163.3186	5078.2097	641.69	w	top of water pipe
377	5129.8945	5062.5068	644.17	w	top of water pipe
376	5126.4716	5062.9000	643.19	w	top of water pipe
375	5181.6940	5052.4739	642.94	w	top of water pipe
374	5195.4191	5054.4491	642.53	w	top of water pipe
373	5182.8243	5051.6436	646.25	w	top of water pipe
372	5241.6946	5066.9136	643.57	w	top of water pipe
371	5205.8482	5087.8112	642.28	w	top of water pipe
370	4944.4735	4873.2891	640.73	w	top of water pipe
369	4875.3287	4863.6248	641.44	w	top of water pipe
368	4868.8917	5119.8476	643.54	w	top of water pipe
367	4875.3287	4863.6248	641.44	w	top of water pipe
366	4877.3832	5107.6232	642.93	w	top of water pipe
365	4868.8917	5119.8476	643.54	w	top of water pipe
364	4986.8359	5124.2723	642.25	w	top of water pipe
363	4885.8220	5118.4465	642.79	w	top of water pipe
362	4875.3287	5107.6232	642.93	w	top of water pipe
361	4861.8175	5089.3051	642.73	w	top of water pipe
360	4948.2200	4977.9152	640.65	w	top of water pipe
359	4918.3489	4879.1622	642.29	w	top of water pipe
358	4912.3281	4874.5664	642.36	w	top of water pipe
357	4902.4180	4873.8085	640.58	w	top of water pipe
356	4920.4140	4871.9355	641.11	w	top of water pipe

MLH INCOME REALTY
5.4014 Ac.

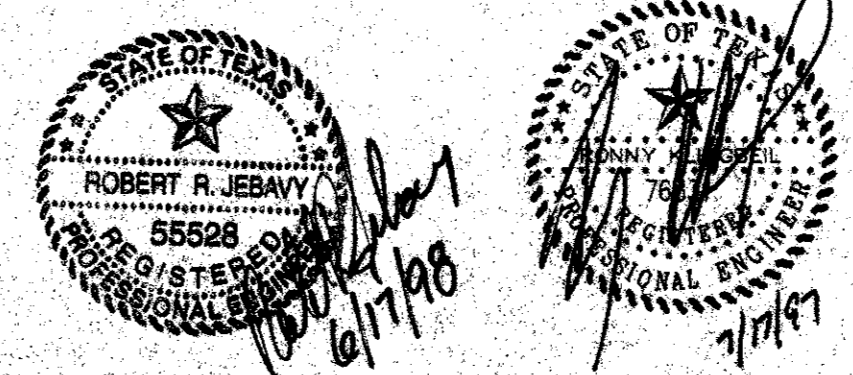


QUORUM DRIVE OFFICE TOWER UTILITY AS-BUILTS

Drawn	Checked	Scale	Date	Sheet
S Hardin	B. Worley	1"=60'	9/06/97	1/1

AS-BUILT

NOTE: THESE PLANS HAVE BEEN REVISED TO CONFORM WITH CONSTRUCTION RECORDS PROVIDED BY CONTRACTOR.



Water and Sanitary Sewer Plan
Quorum Drive Office
Addison, Texas

BROCKETT • DAVIS • DRAKE, INC.
consulting engineers
Civil & Structural Engineering - Surveying
4144 North Central Expressway, Suite 1100 • Dallas, Texas 75204
(214) 824-3647 • fax (214) 824-7064

DESIGN	DRAWN	DATE	SCALE	NOTES	FILE	NO.
HWI	STL	06/09/97	1"=40'	FG	C97139	C-5

Coordinates based on Station Sheet provided by DMR Inc. Engineers

PTS	N	E	NORTH	ELEV	DESCRIPTION
423	4932.2904	4922.8246	646.91	h	top of conduit
422	4952.0996	4927.0704	644.83	h	top of conduit
421	4975.9641	4931.8053	649.34	h	top of conduit
420	5048.8857	4928.8629	643.80	h	top of conduit
419	5053.4637	4912.9028	642.79	h	top of conduit
418	5053.4637	4912.9028	642.79	h	top of conduit
417	5053.4637	4912.9028	642.79	h	top of conduit
416	5056.7644	4911.5199	642.83	h	top of conduit
415	5059.8444	4910.1370	642.87	h	top of conduit
414	5062.9244	4908.7541	642.91	h	top of conduit
413	5066.0044	4907.3712	642.95	h	top of conduit
412	5069.0844	4905.9883	643.00	h	top of conduit
411	5072.1644	4904.6054	643.04	h	top of conduit
410	5075.2444	4903.2225	643.08	h	top of conduit
409	5078.3244	4901.8396	643.12	h	top of conduit
408	5081.4044	4900.4567	643.16	h	top of conduit
407	5084.4844	4899.0738	643.20	h	top of conduit
406	5087.5644	4897.6909	643.24	h	top of conduit
405	5090.6444	4896.3080	643.28	h	top of conduit
404	5093.7244	4894.9251	643.32	h	top of conduit
403	5096.8044	4893.5422	643.36	h	top of conduit
402	5099.8844	4892.1593	643.40	h	top of conduit
401	5102.9644	4890.7764	643.44	h	top of conduit
400	5106.0444	4889.3935	643.48	h	top of conduit
399	5109.1244	4888.0106	643.52	h	top of conduit
398	5112.2044	4886.6277	643.56	h	top of conduit
397	5115.2844	4885.2448	643.60	h	top of conduit
396	5118.3644	4883.8619	643.64	h	top of conduit
395	5121.4444	4882.4790	643.68	h	top of conduit
394	5124.5244	4881.0961	643.72	h	top of conduit
393	5127.6044	4879.7132	643.76	h	top of conduit
392	5130.6844	4878.3303	643.80	h	top of conduit
391	5133.7644	4876.9474	643.84	h	top of conduit

DAL-MAC CONSTRUCTION CO.

Drawn	Checked	Scale	Date	Sheet
S Hardin	R. Worley	1"=60'	9/15/97	1/1