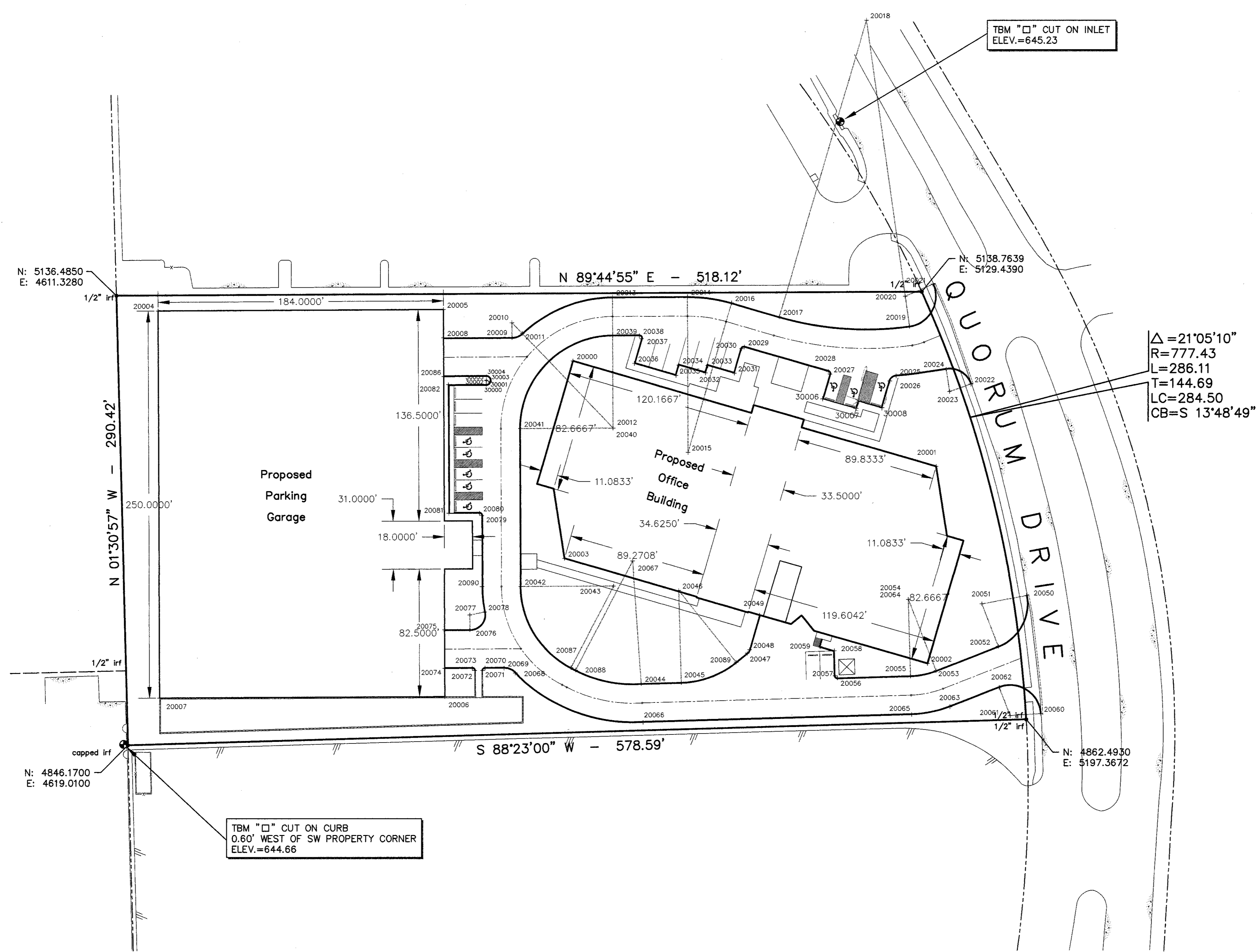


NOTE:  
ALL COORDINATES OF POINTS  
ON PROPOSED PAVEMENT  
ARE AT THE BACK OF CURB.

20000	5094.1860	4905.0701
20001	5026.0521	5136.8435
20002	4898.6776	5133.2153
20003	4966.8116	4899.5419
20004	5126.6025	4638.0632
20005	5127.4118	4822.0614
20006	4877.4142	4822.1610
20007	4876.6049	4639.1628
20008	5109.1620	4822.1417
20009	5109.3549	4866.0042
20010	5118.8548	4865.9625
20011	5111.9860	4872.5252
20012	5050.8898	4930.8990
20013	5135.3890	4930.5273
20014	5135.6021	4978.9862
20015	5035.1031	4979.4233
20016	5131.5886	5007.5493
20017	5122.6353	5038.2688
20018	5314.1663	5094.0911
20019	5116.5648	5121.5482
20020	5133.8792	5118.8644
20021	5143.6471	5136.7504
20022	5079.1923	5161.1946
20023	5074.4237	5147.5012
20024	5088.7659	5145.3679
20025	5084.4293	5113.0113
20026	5081.1990	5108.9992
20027	5085.5819	5070.6955
20028	5087.4417	5069.6751
20029	5103.1111	5015.9120
20030	5102.0907	5014.0522
20031	5086.2498	5009.4354
20032	5086.4862	4990.7553
20033	5091.2864	4992.1544
20034	5091.5228	4973.4742
20035	5084.8024	4971.5157
20036	5092.6371	4944.6341
20037	5108.5451	4949.2706
20038	5110.4648	4947.8239
20039	5110.3892	4930.6373
20040	5050.8898	4930.8990
20041	5050.6281	4871.3996
20042	4948.6291	4871.8482
20043	4948.9908	4931.3477
20044	4885.7919	4949.1478
20045	4886.5241	4975.0891
20046	4946.0004	4973.4105
20047	4905.3805	5017.8563
20048	4907.3616	5019.3616
20049	4929.9872	5025.8776
20050	4942.5300	5197.5821
20051	4937.1963	5168.5683
20052	4909.6920	5179.2343
20053	4894.0074	5138.7884
20054	4940.1587	5120.8913
20055	4890.6785	5122.2878
20056	4889.3630	5075.6789
20057	4890.8201	5074.1372
20058	4906.9438	5073.6822
20059	4909.6050	5064.5515
20060	4866.1968	5206.4036
20061	4864.9526	5186.9433
20062	4883.1335	5179.8929
20063	4870.6987	5147.8274
20064	4940.1587	5120.8913
20065	4865.6884	5122.9531
20066	4860.8158	4950.3467
20067	4965.9938	4943.5386
20068	4892.6541	4868.2788
20069	4895.8315	4861.1464
20070	4895.7770	4848.7681
20071	4894.2705	4847.2747
20072	4894.2485	4842.2748
20073	4895.7419	4840.7682
20074	4895.6641	4823.0807
20075	4920.6638	4822.9708
20076	4920.7385	4839.2592
20077	4930.2354	4839.2174
20078	4932.1208	4848.5285
20079	4994.5186	4846.6461
20080	4996.0121	4845.1395
20081	4995.9263	4825.6398
20082	5078.9255	4825.2747
20086	5084.1622	4822.2516
20087	4896.1021	4903.8959
20088	4894.5610	4906.2593
20089	4899.5982	5010.6541
20090	4948.5191	4846.8485
30000	5079.0320	4849.4848
30001	5080.6514	4851.8136
30002	5081.5319	4849.4738
30003	5080.8946	4851.9056
30004	5084.2823	4849.5575
30005	5081.7824	4849.5685
30006	5069.7410	5065.0786
30007	5063.5851	5087.1998
30008	5063.9084	5103.9598



CENTER OF  
BOUNDARY ARC  
N: 4818.1400  
E: 4421.2034

N: 4846.1700  
E: 4619.0100

N: 4862.4930  
E: 5197.3672

Benchmarks:  
Disk in Brick Wall Of Old Addison School Bldg.  
4.0' Above Ground  
Elevation: 650.61

STAKING SHEET						
Quorum Drive Office						
Addison, Texas						
BROCKETTE • DAVIS • DRAKE, INC.						
consulting engineers						
Civil & Structural Engineering • Surveying						
4144 North Central Expressway, Suite 1100 • Dallas, Texas 75204						
(214) 824-3647 • fax (214) 824-7064						
DESIGN	DRAWN	DATE	SCALE	NOTES	FILE	NO.
HMI	STL	8/5/97	1"=40'	FG	C97138	-