

GENERAL NOTES

- All materials and construction shall conform to the Town of Addison standards and specifications.
- It will be the responsibility of the contractor to protect all public utilities in the construction of this project. All manholes, clean-outs, valve boxes, fire hydrants, etc. must be adjusted to proper line and grade by the Contractor prior to and after the placing of permanent paving. Utilities must be maintained to proper line and grade during construction of this project.
- The Contractor will be responsible for coordinating with all the appropriate utility companies for the location of all utilities within the construction area.
- The Paving Contractor shall coordinate with the Landscape Contractor to insure all sleeving for irrigation has been installed prior to placement of permanent pavement.

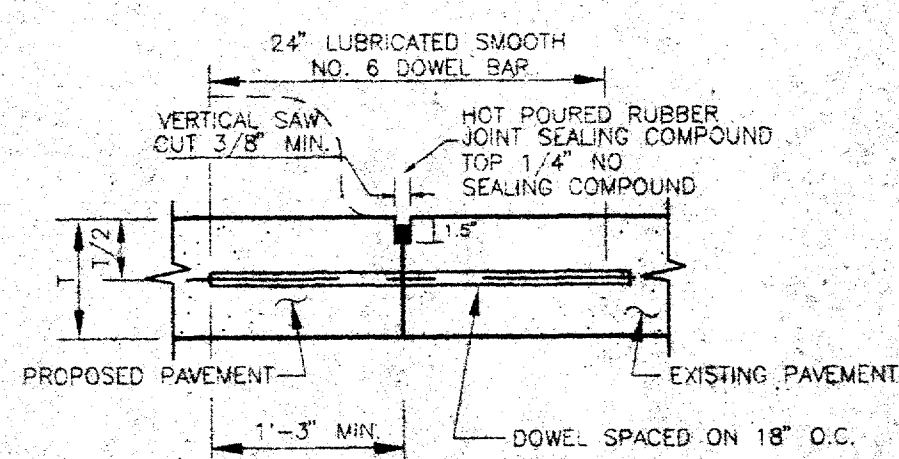
LEGEND

- PROPOSED PAVEMENT
- SAWCUT

NOTES:

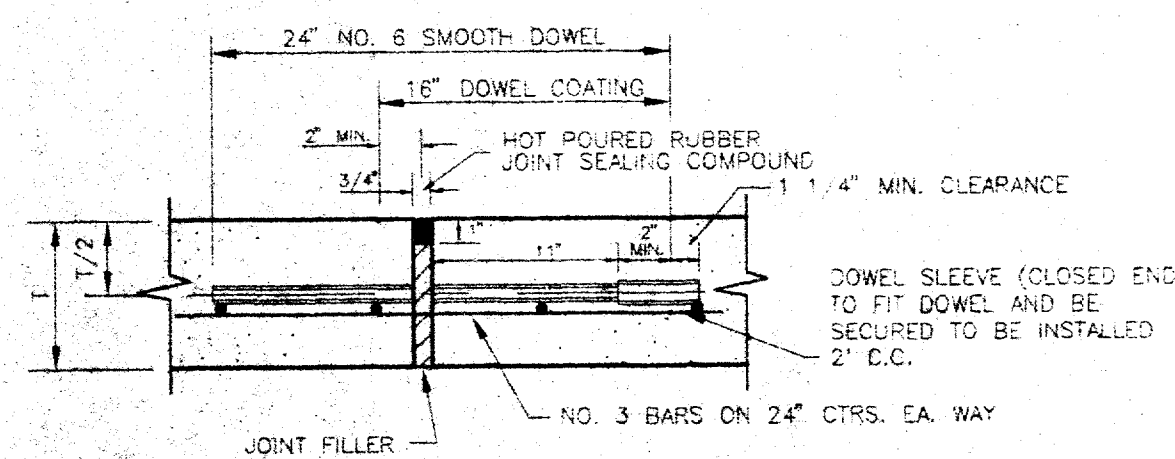
- EXPANSION AND SAWED DUMMY JOINT SHALL MATCH AND BE CONSISTENT WITH EXISTING PARKING
- ALL DIMENSIONS ARE TO BACK OF CURB UNLESS OTHERWISE SPECIFIED.

BENCHMARK:
 SQUARE CUT ON ϵ OF INLET; WEST SIDE OF QUORUM DRIVE; 340'± NORTH OF BELT LINE ROAD. ELEV. 641.53



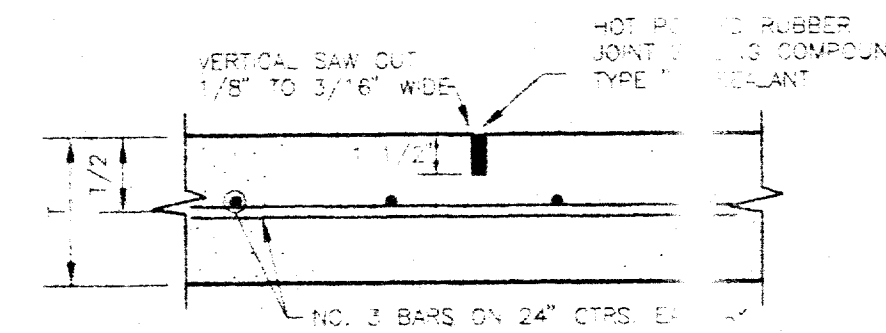
LONGITUDINAL BUTT JOINT

- NOTE: DOWELS AND REINFORCING BARS SHALL BE SUPPORTED BY AN APPROVED DEVICE.
- N.T.S.
- NO. 5 SMOOTH DOWEL BAR MAY BE USED IN 5 INCH AND 6 INCH PAVEMENT THICKNESS.
 - DOWEL BARS SHALL BE DRILLED INTO PAVEMENT HORIZONTALLY BY USE OF A MECHANICAL RIG.
 - DRILLED BY HAND IS NOT ACCEPTABLE. PUSHING DOWEL BARS INTO GREEN CONCRETE NOT ACCEPTABLE.

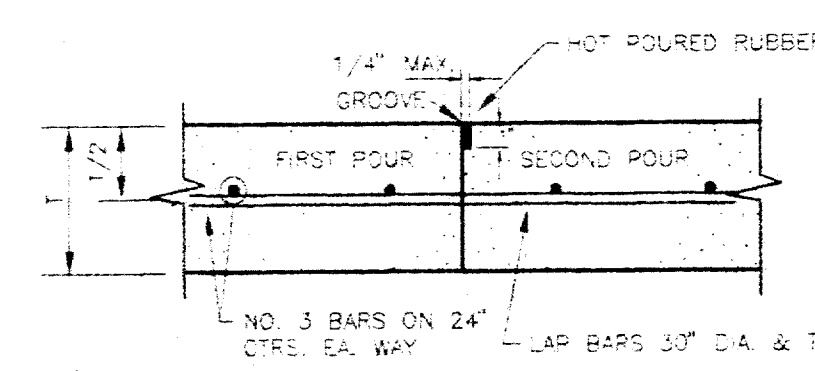


EXPANSION JOINT

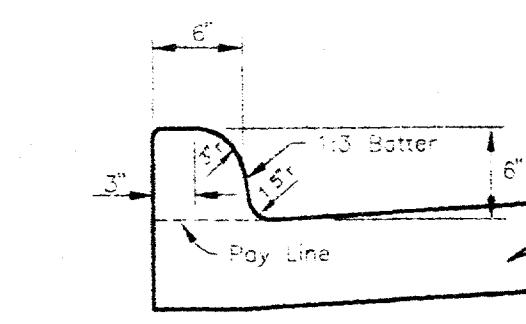
- NOTE: DOWELS AND REINFORCING BARS SHALL BE SUPPORTED BY AN APPROVED DEVICE.
- N.T.S.



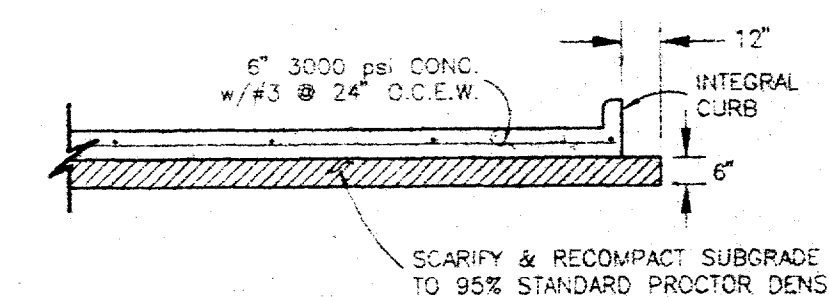
SAWED DUMMY (CONTROL) JOINT



CONSTRUCTION JOINT



INTEGRAL CURB



TYPICAL PAVING SECTION

Horizontal Control/Paving Plan
 Quorum Centre—East No.1 Addition
 Addison, Texas

BROCKETTE • DAVIS • DRAKE , inc.
 consulting engineers
 Civil & Structural Engineering/Surveying
 4144 North Central Expressway, Suite 1100 Dallas, Texas 75204
 (214)824-3647, fax (214) 824-7064

DESIGN	DRAWN	DATE	SCALE	NOTES	FILE	NO.
JAR	STL	5/95	1"=20'	BDD	C95087	C2