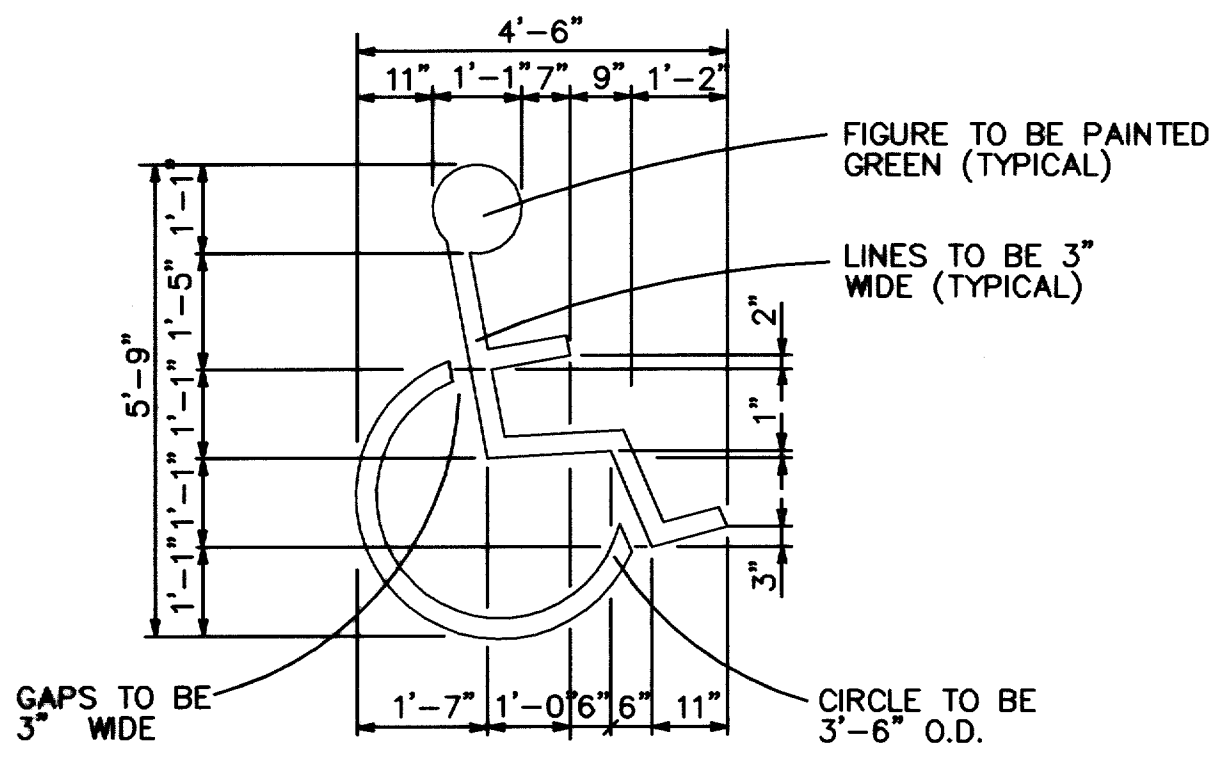
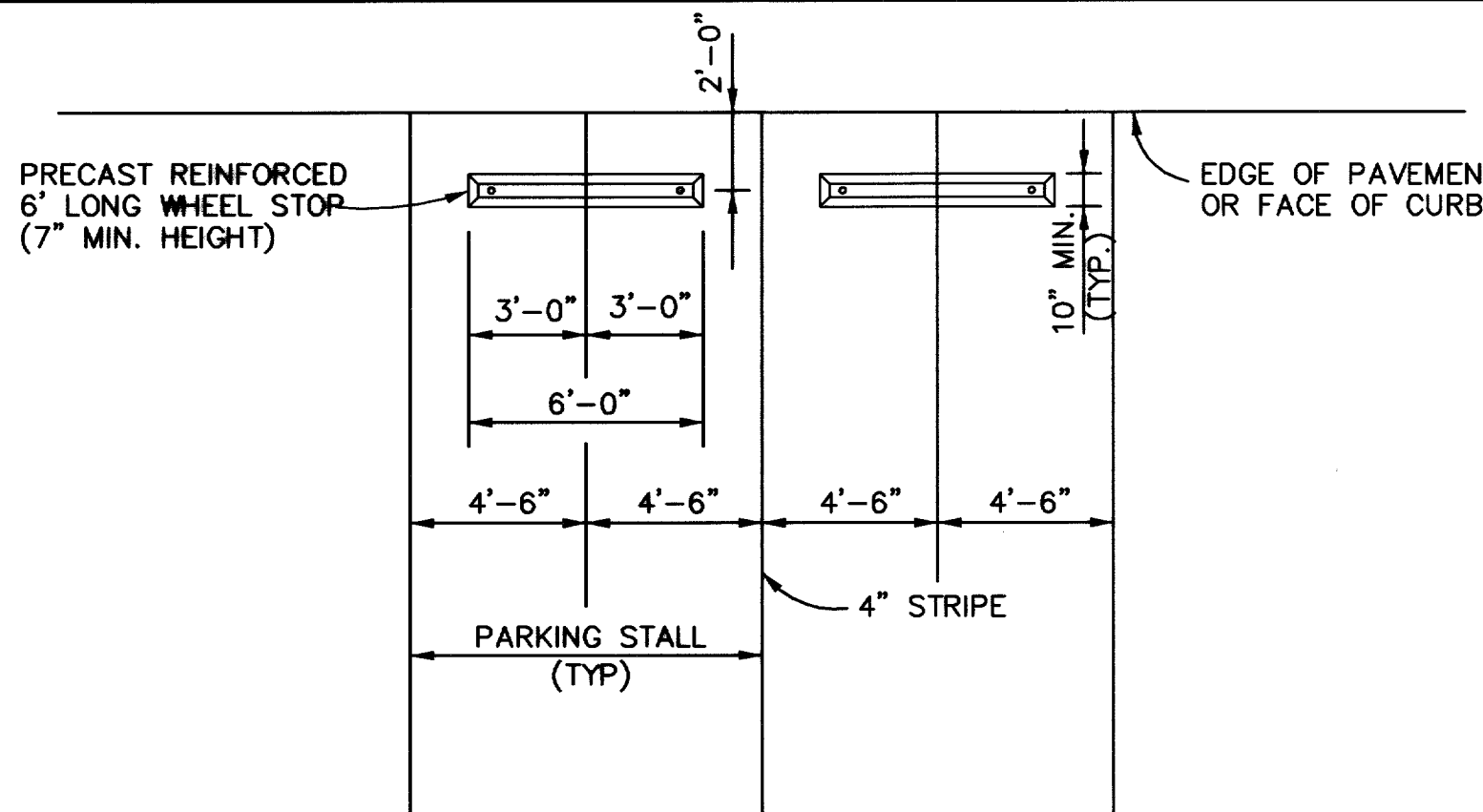


**PRECAST CONCRETE WHEEL STOP DETAIL**



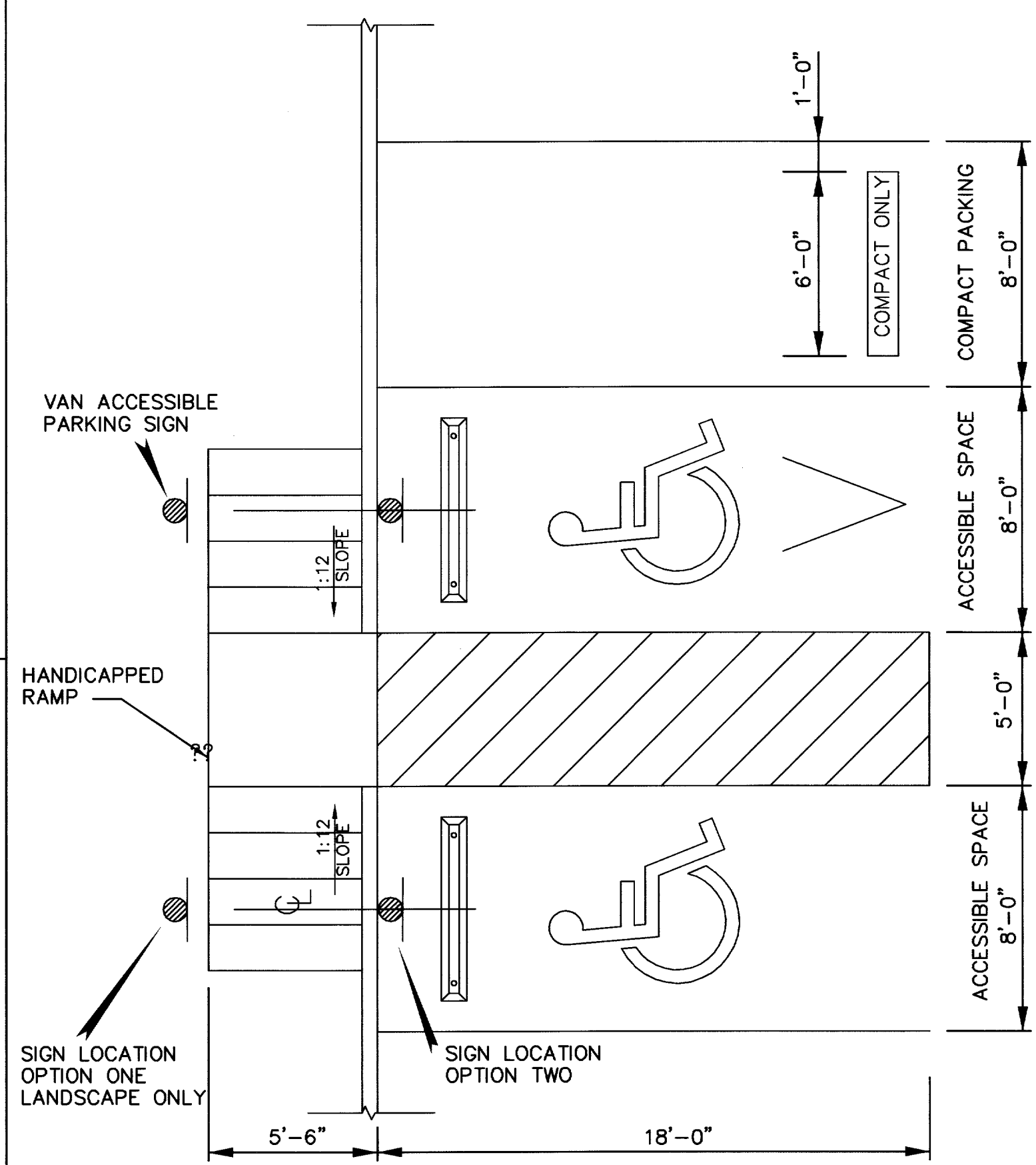
**HANDICAPPED GRAPHICS DETAIL**

N.T.S.



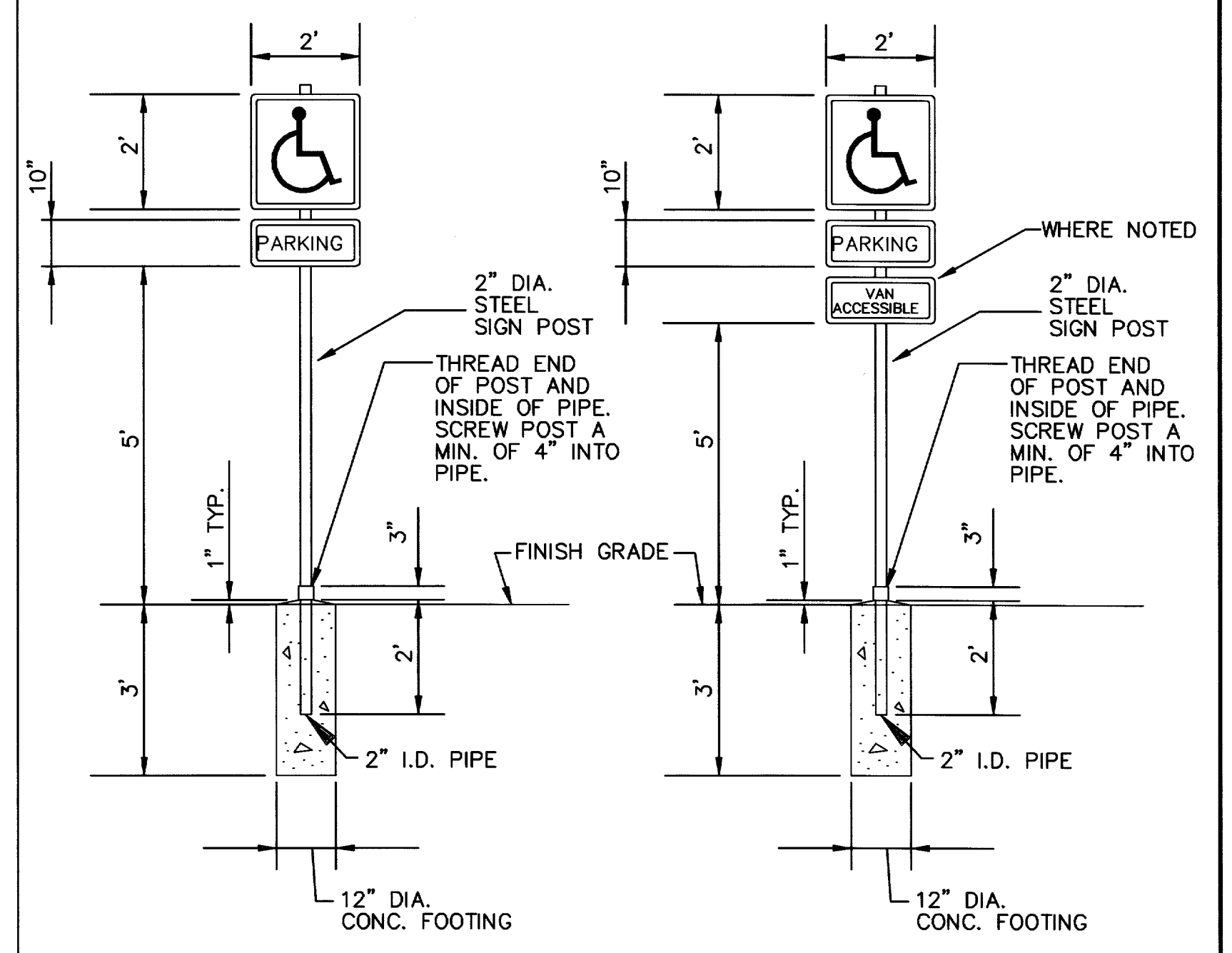
**PRECAST CONCRETE WHEEL STOP PLACEMENT DETAIL**

N.T.S.



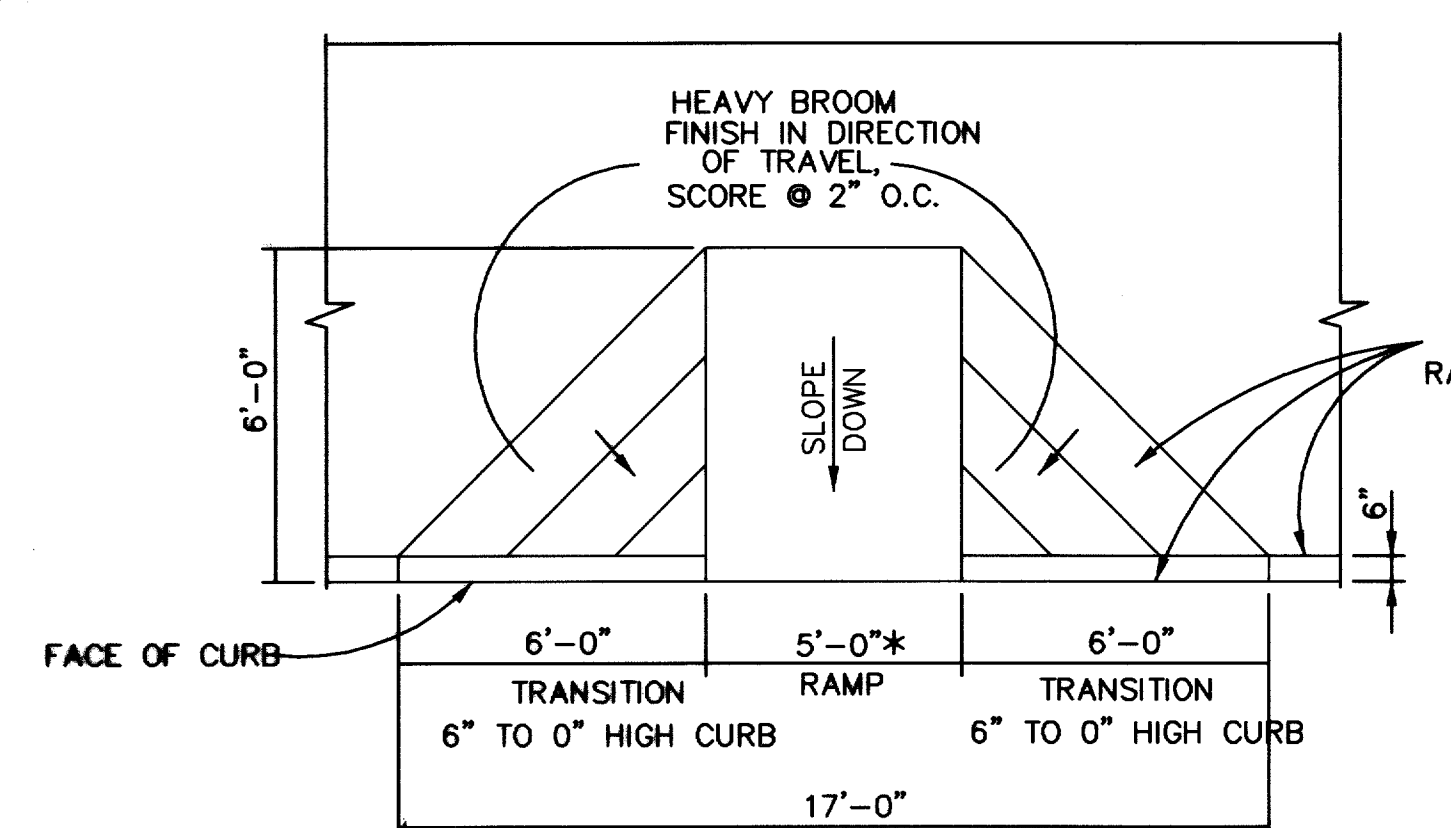
**ACCESSIBLE PARKING SPACES**

N.T.S.



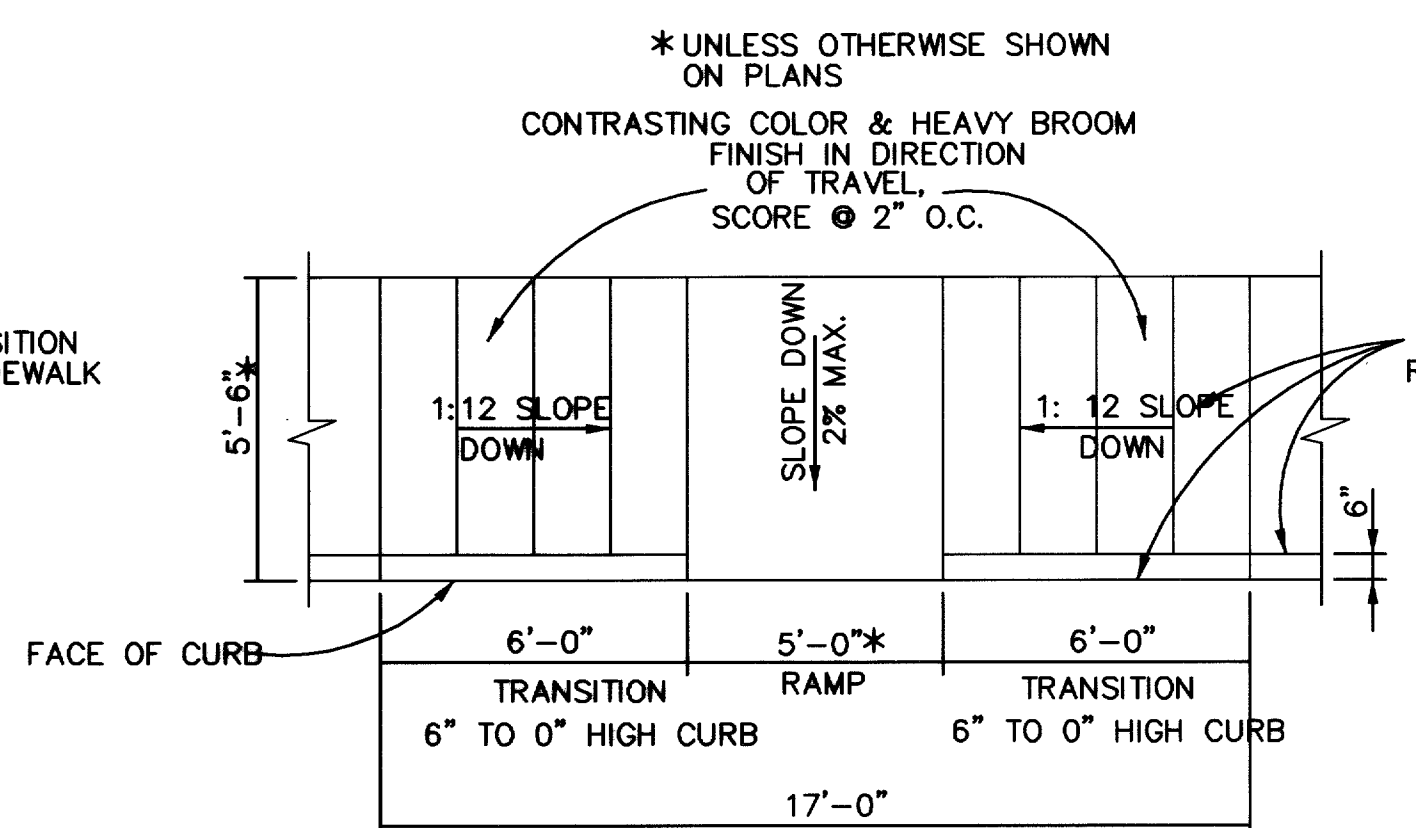
**ACCESSIBLE PARKING SIGN DETAIL**

N.T.S.



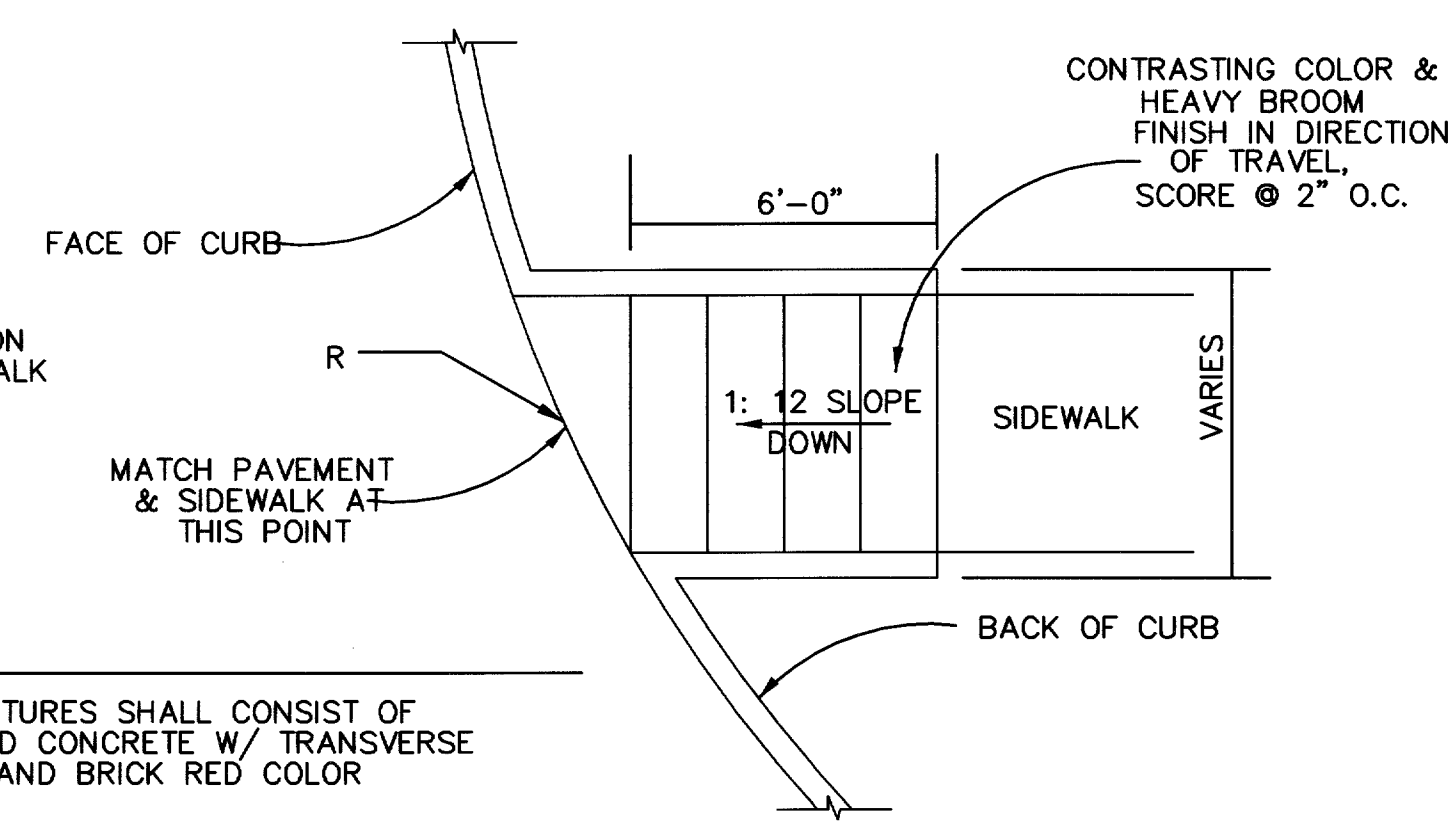
DETAIL NOTE:  
 1. IF "X" IS LESS THAN 48", THEN THE CURB TRANSITION SHOULD SPAN 6'-0".

\*UNLESS OTHERWISE SHOWN ON PLANS



**TYPICAL HANICAPPED RAMP DETAILS**

SCALE 1/4"=1'



NOTES:

1. RAMP TEXTURES SHALL CONSIST OF ROUGHENED CONCRETE W/ TRANSVERSE GROOVES AND BRICK RED COLOR MIXED IN.
2. RAMP TEXTURES SHALL MEET TEXAS ACCESSIBILITY STANDARDS.
3. GROOVES SHALL BE 1/8" DEEP, 1/4" TO 3/4" WIDE AT 3/4" TO 2" O.C. ARRANGED SO WATER WILL NOT ACCUMULATE.

**GENERAL NOTES:**

1. ALL PAVING DIMENSIONS ARE TO FACE OF CURBS UNLESS OTHERWISE NOTED.
2. CONTRACTOR SHALL PRESERVE AND PROTECT ALL PROPERTY CORNERS AND BENCH MARKS.
3. CONTRACTOR SHALL LOCATE AND PROTECT ALL EXISTING UTILITIES. ANY UTILITIES DAMAGED BY THE CONTRACTOR SHALL BE REPAIRED TO THE SATISFACTION OF THE UTILITY OWNER AND/OR TOWN OF ADDISON AT THE CONTRACTOR'S EXPENSE.
4. ALL PARKING ISLANDS SHALL HAVE 6" CONCRETE CURBS.
5. ALL PARKING STRIPING SHALL BE FOUR-INCHES WIDE AND TRAFFIC WHITE EXCEPT WHERE NOTED.

NO.	BY	DATE	REVISION
1	EAE	10/11/02	RECORD DRAWING

**RECORD DRAWING**  
 THIS DRAWING REFLECTS FIELD REVISIONS AS PROVIDED BY THE CONTRACTOR.



**15 OCT 02**

<b>MISCELLANEOUS PAVING DETAILS</b>						
<b>SPRINGHILL SUITES</b>						
<b>TOWN OF ADDISON, TEXAS</b>						
DRAWN	DESIGN	DATE	NOTES	SCALE	FILE	NUMBER
JPS	JEM	05/03/01	AS	N.T.S.	MARADDT1	D1

**PATE ENGINEERS**  
 8150 BROOKRIVER DRIVE  
 SUITE S-700  
 DALLAS, TEXAS 75247  
 TEL (214) 357-2981  
 FAX (214) 357-2985

JOB NO. 083100900