

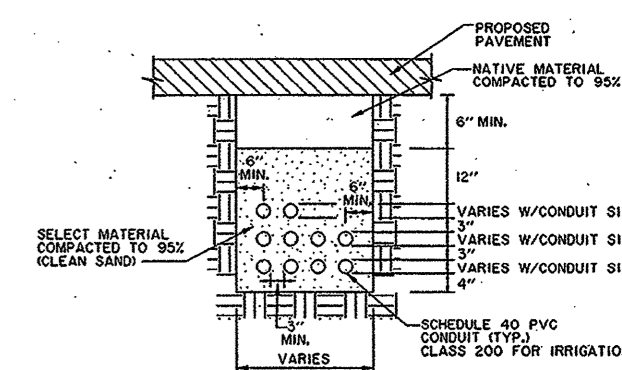


SCALE IN FEET
0 20 40 60 80
SCALE: 1" = 40'

NOTE:
See Landscape Plans
For Landscaping Along
Fire Lane Alley.

NOTE:
CONTRACTOR SHALL CONTACT ALL
UTILITIES AND PRIVATE APARTMENT
DEVELOPER TO INSURE THAT ALL
NECESSARY SLEEVES ARE INSTALLED
PRIOR TO PAVING.

NOTE:
MINIMUM COVER OF CONDUIT SLEEVES
SHALL BE 2.5' FROM TOP OF CURB.



TYPICAL CONDUIT/SLEEVE
EMBEDMENT
N.T.S.

BENCHMARKS:

- BM#5
1" CUT ON 8' INLET ON NORTH
CURB LINE OF GOODMAN AVE.
±75' EAST OF PASCHAL PLACE.
ELEV. 629.98
- BM#6
1" CUT AT 1/2 OF 8' INLET AT
THE SOUTHWEST CORNER OF
MORRIS AVE. AND WITT PLACE.
ELEV. 627.29
- BM#7
1" CUT AT WEST CORNER OF
ADDISON THEATRE CENTRE
PARKING LOT, SECOND ENTRANCE
NORTH OF ADDISON RD.
ELEV. 637.66

RECORD DRAWING

THIS DRAWING HAS BEEN MODIFIED FROM THE ORIGINAL TO
SHOW ONLY THE FIELD CHANGES AND ADJUSTMENTS MADE
DURING CONSTRUCTION BY THE CONTRACTOR WHICH WERE
DOCUMENTED AND FURNISHED TO THE ENGINEER FOR THE
PURPOSE OF PREPARING THESE RECORD DRAWINGS. FIELD
INSPECTION OF CONSTRUCTION WAS PERFORMED BY OTHERS.
TO THE BEST OF OUR KNOWLEDGE AND UNDERSTANDING THESE
RECORD DRAWINGS REPRESENT THE 'AS-BUILT' CONDITIONS.

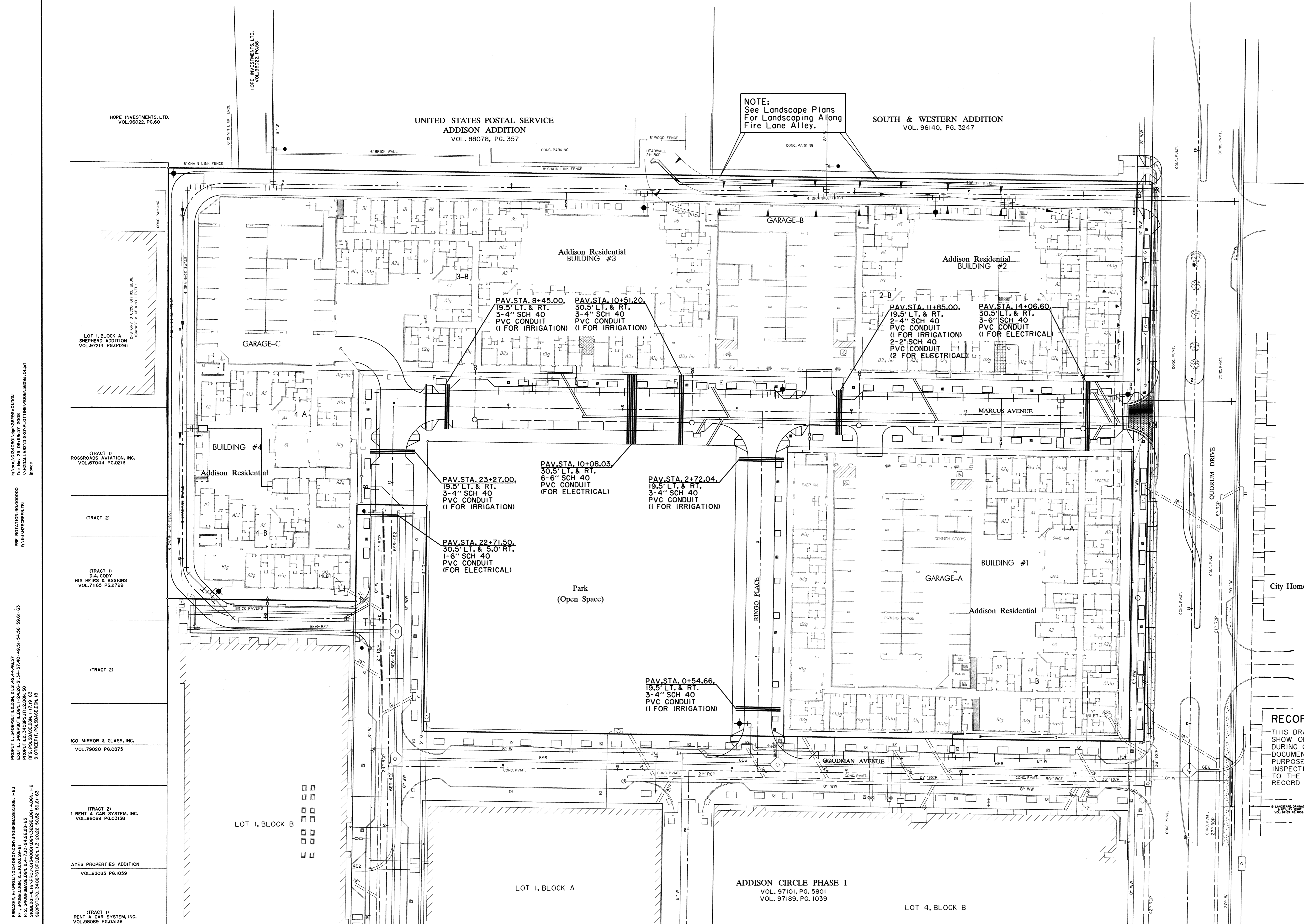


SLEEVING PLAN

ADDISON RESIDENTIAL

TOWN OF ADDISON, TEXAS

DESIGN	CHECKED	APPR.	SCALE	DATE	PROJECT NO.	NO.
HZI	HZI	DEM	1"=40'	11/20/08		C14



HOPE INVESTMENTS, LTD.
VOL. 86022, PG. 60

HOPE INVESTMENTS, LTD.
VOL. 86022, PG. 28

UNITED STATES POSTAL SERVICE
ADDISON ADDITION
VOL. 88078, PG. 357

NOTICE: See Landscape Plans For Landscaping Along Fire Lane Alley.

SOUTH & WESTERN ADDITION
VOL. 96140, PG. 3247

ADDISON RESIDENTIAL BUILDING #3

ADDISON RESIDENTIAL BUILDING #2

ADDISON RESIDENTIAL BUILDING #1

GARAGE-A, GARAGE-B, GARAGE-C

BUILDING #4

Park (Open Space)

LOT 1, BLOCK A
SHEPHERD ADDITION
VOL. 97214, PG. 04261

LOT 1, BLOCK B

ADDISON CIRCLE PHASE I
VOL. 97101, PG. 5801
VOL. 97189, PG. 1039

LOT 4, BLOCK B

TRAJECT 1: ROSSEBOARDS AVIATION, INC.
VOL. 67044, PG. 0213

TRAJECT 2

TRAJECT 1: HIS HEIRS & ASSIGNS
VOL. 71165, PG. 2799

TRAJECT 2

CCO MIRROR & GLASS, INC.
VOL. 79020, PG. 0875

TRAJECT 2: RENT A CAR SYSTEM, INC.
VOL. 89069, PG. 03158

AYES PROPERTIES ADDITION
VOL. 83083, PG. 0109

TRAJECT 1: RENT A CAR SYSTEM, INC.
VOL. 89069, PG. 03158

PROFIT 1: 3408BPUTL, DONOR: 21, 31, 42, 44, 45, 46, 47, 48, 51, 52, 53, 54, 55, 56, 57, 58, 59, 60, 61, 62, 63, 64, 65, 66, 67, 68, 69, 70, 71, 72, 73, 74, 75, 76, 77, 78, 79, 80, 81, 82, 83, 84, 85, 86, 87, 88, 89, 90, 91, 92, 93, 94, 95, 96, 97, 98, 99, 100, 101, 102, 103, 104, 105, 106, 107, 108, 109, 110, 111, 112, 113, 114, 115, 116, 117, 118, 119, 120, 121, 122, 123, 124, 125, 126, 127, 128, 129, 130, 131, 132, 133, 134, 135, 136, 137, 138, 139, 140, 141, 142, 143, 144, 145, 146, 147, 148, 149, 150, 151, 152, 153, 154, 155, 156, 157, 158, 159, 160, 161, 162, 163, 164, 165, 166, 167, 168, 169, 170, 171, 172, 173, 174, 175, 176, 177, 178, 179, 180, 181, 182, 183, 184, 185, 186, 187, 188, 189, 190, 191, 192, 193, 194, 195, 196, 197, 198, 199, 200, 201, 202, 203, 204, 205, 206, 207, 208, 209, 210, 211, 212, 213, 214, 215, 216, 217, 218, 219, 220, 221, 222, 223, 224, 225, 226, 227, 228, 229, 230, 231, 232, 233, 234, 235, 236, 237, 238, 239, 240, 241, 242, 243, 244, 245, 246, 247, 248, 249, 250, 251, 252, 253, 254, 255, 256, 257, 258, 259, 260, 261, 262, 263, 264, 265, 266, 267, 268, 269, 270, 271, 272, 273, 274, 275, 276, 277, 278, 279, 280, 281, 282, 283, 284, 285, 286, 287, 288, 289, 290, 291, 292, 293, 294, 295, 296, 297, 298, 299, 300, 301, 302, 303, 304, 305, 306, 307, 308, 309, 310, 311, 312, 313, 314, 315, 316, 317, 318, 319, 320, 321, 322, 323, 324, 325, 326, 327, 328, 329, 330, 331, 332, 333, 334, 335, 336, 337, 338, 339, 340, 341, 342, 343, 344, 345, 346, 347, 348, 349, 350, 351, 352, 353, 354, 355, 356, 357, 358, 359, 360, 361, 362, 363, 364, 365, 366, 367, 368, 369, 370, 371, 372, 373, 374, 375, 376, 377, 378, 379, 380, 381, 382, 383, 384, 385, 386, 387, 388, 389, 390, 391, 392, 393, 394, 395, 396, 397, 398, 399, 400, 401, 402, 403, 404, 405, 406, 407, 408, 409, 410, 411, 412, 413, 414, 415, 416, 417, 418, 419, 420, 421, 422, 423, 424, 425, 426, 427, 428, 429, 430, 431, 432, 433, 434, 435, 436, 437, 438, 439, 440, 441, 442, 443, 444, 445, 446, 447, 448, 449, 450, 451, 452, 453, 454, 455, 456, 457, 458, 459, 460, 461, 462, 463, 464, 465, 466, 467, 468, 469, 470, 471, 472, 473, 474, 475, 476, 477, 478, 479, 480, 481, 482, 483, 484, 485, 486, 487, 488, 489, 490, 491, 492, 493, 494, 495, 496, 497, 498, 499, 500, 501, 502, 503, 504, 505, 506, 507, 508, 509, 510, 511, 512, 513, 514, 515, 516, 517, 518, 519, 520, 521, 522, 523, 524, 525, 526, 527, 528, 529, 530, 531, 532, 533, 534, 535, 536, 537, 538, 539, 540, 541, 542, 543, 544, 545, 546, 547, 548, 549, 550, 551, 552, 553, 554, 555, 556, 557, 558, 559, 560, 561, 562, 563, 564, 565, 566, 567, 568, 569, 570, 571, 572, 573, 574, 575, 576, 577, 578, 579, 580, 581, 582, 583, 584, 585, 586, 587, 588, 589, 590, 591, 592, 593, 594, 595, 596, 597, 598, 599, 600, 601, 602, 603, 604, 605, 606, 607, 608, 609, 610, 611, 612, 613, 614, 615, 616, 617, 618, 619, 620, 621, 622, 623, 624, 625, 626, 627, 628, 629, 630, 631, 632, 633, 634, 635, 636, 637, 638, 639, 640, 641, 642, 643, 644, 645, 646, 647, 648, 649, 650, 651, 652, 653, 654, 655, 656, 657, 658, 659, 660, 661, 662, 663, 664, 665, 666, 667, 668, 669, 670, 671, 672, 673, 674, 675, 676, 677, 678, 679, 680, 681, 682, 683, 684, 685, 686, 687, 688, 689, 690, 691, 692, 693, 694, 695, 696, 697, 698, 699, 700, 701, 702, 703, 704, 705, 706, 707, 708, 709, 710, 711, 712, 713, 714, 715, 716, 717, 718, 719, 720, 721, 722, 723, 724, 725, 726, 727, 728, 729, 730, 731, 732, 733, 734, 735, 736, 737, 738, 739, 740, 741, 742, 743, 744, 745, 746, 747, 748, 749, 750, 751, 752, 753, 754, 755, 756, 757, 758, 759, 760, 761, 762, 763, 764, 765, 766, 767, 768, 769, 770, 771, 772, 773, 774, 775, 776, 777, 778, 779, 780, 781, 782, 783, 784, 785, 786, 787, 788, 789, 790, 791, 792, 793, 794, 795, 796, 797, 798, 799, 800, 801, 802, 803, 804, 805, 806, 807, 808, 809, 810, 811, 812, 813, 814, 815, 816, 817, 818, 819, 820, 821, 822, 823, 824, 825, 826, 827, 828, 829, 830, 831, 832, 833, 834, 835, 836, 837, 838, 839, 840, 841, 842, 843, 844, 845, 846, 847, 848, 849, 850, 851, 852, 853, 854, 855, 856, 857, 858, 859, 860, 861, 862, 863, 864, 865, 866, 867, 868, 869, 870, 871, 872, 873, 874, 875, 876, 877, 878, 879, 880, 881, 882, 883, 884, 885, 886, 887, 888, 889, 890, 891, 892, 893, 894, 895, 896, 897, 898, 899, 900, 901, 902, 903, 904, 905, 906, 907, 908, 909, 910, 911, 912, 913, 914, 915, 916, 917, 918, 919, 920, 921, 922, 923, 924, 925, 926, 927, 928, 929, 930, 931, 932, 933, 934, 935, 936, 937, 938, 939, 940, 941, 942, 943, 944, 945, 946, 947, 948, 949, 950, 951, 952, 953, 954, 955, 956, 957, 958, 959, 960, 961, 962, 963, 964, 965, 966, 967, 968, 969, 970, 971, 972, 973, 974, 975, 976, 977, 978, 979, 980, 981, 982, 983, 984, 985, 986, 987, 988, 989, 990, 991, 992, 993, 994, 995, 996, 997, 998, 999, 1000