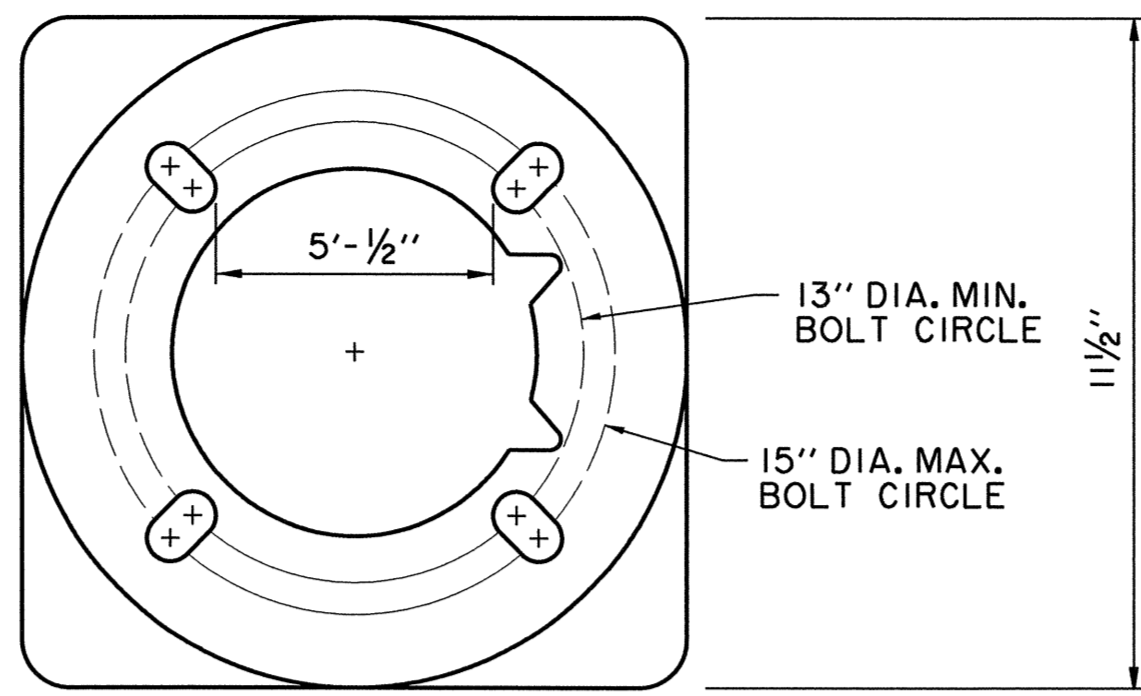


SUBSURFACE DRAIN SYSTEM DETAIL
(SECTION PERPENDICULAR TO CURB)

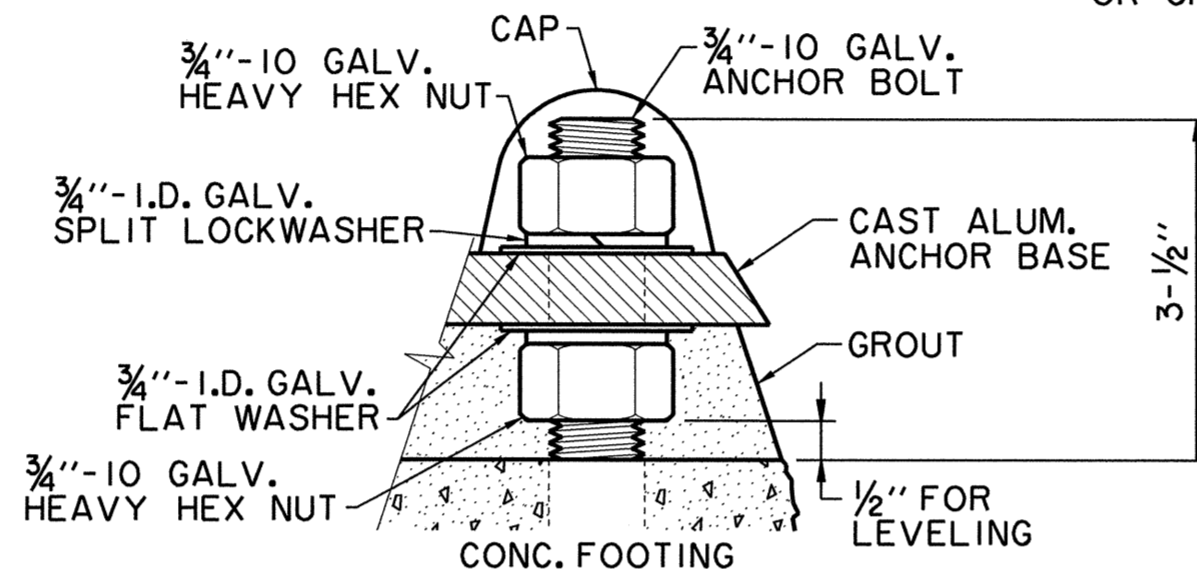
N.T.S.
(TO BE USED ON ALL TREES UNLESS OTHERWISE NOTED)

USE CAUTION WHEN SETTING ANCHOR BOLTS.
BOLTS MUST BE VERT. STRAIGHT &
CENTERED ON DIMENSIONS SHOWN.



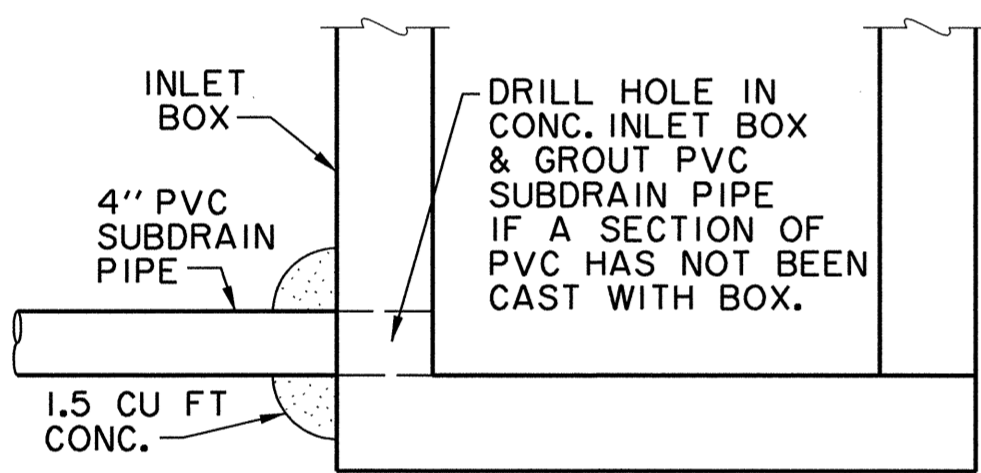
BASE ANCHOR PLATE
(PEDESTRIAN POLE)

N.T.S.
NOTE:
ADEQUATE DRAINAGE
MUST BE PROVIDED IN
CONC. FOUNDATION
OR GROUT.



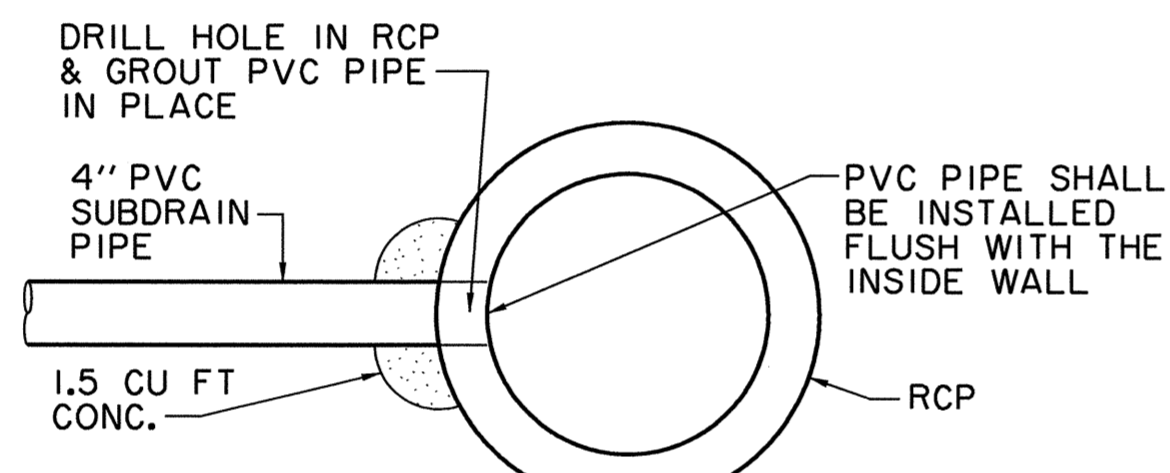
BOLT PROJECTION DETAIL
(PEDESTRIAN)

N.T.S.



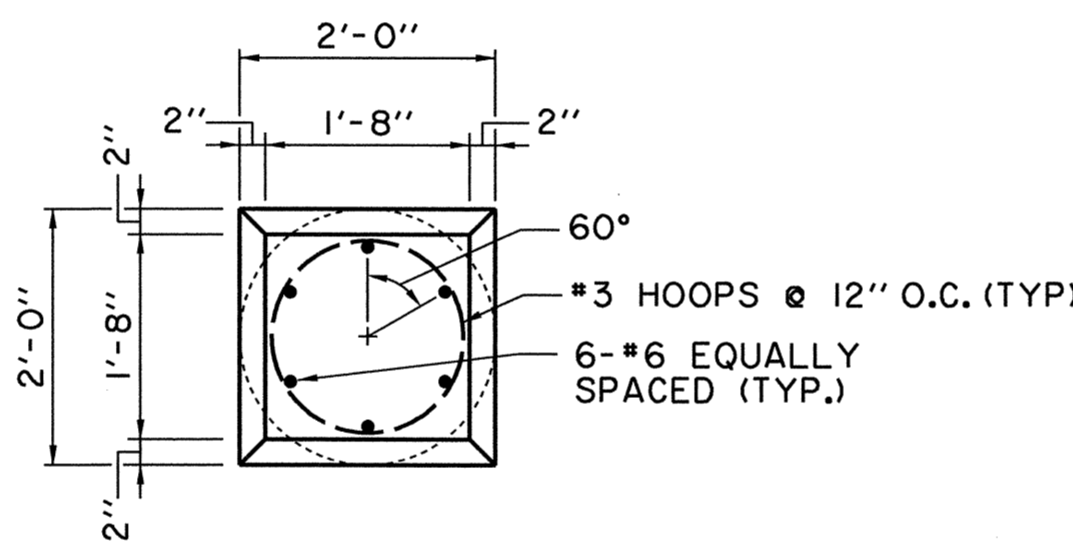
PVC SUBDRAIN PIPE CONNECTION
TO INLET BOX

N.T.S.



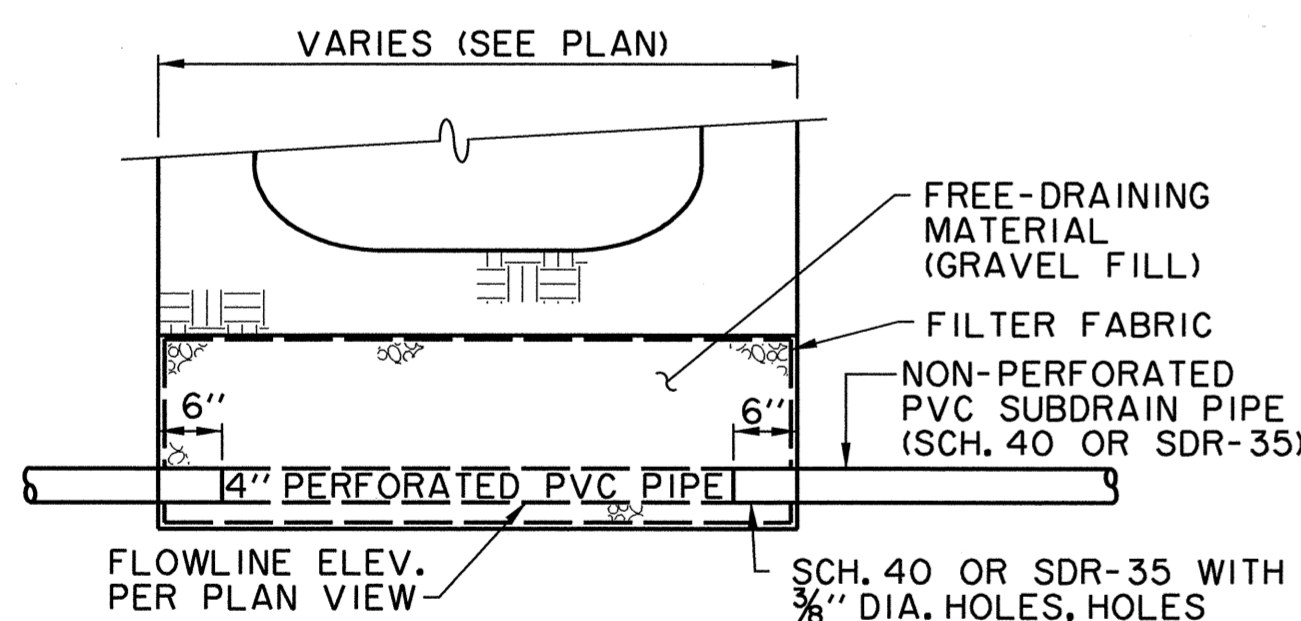
PVC SUBDRAIN PIPE CONNECTION
TO STORM DRAINAGE PIPE

N.T.S.



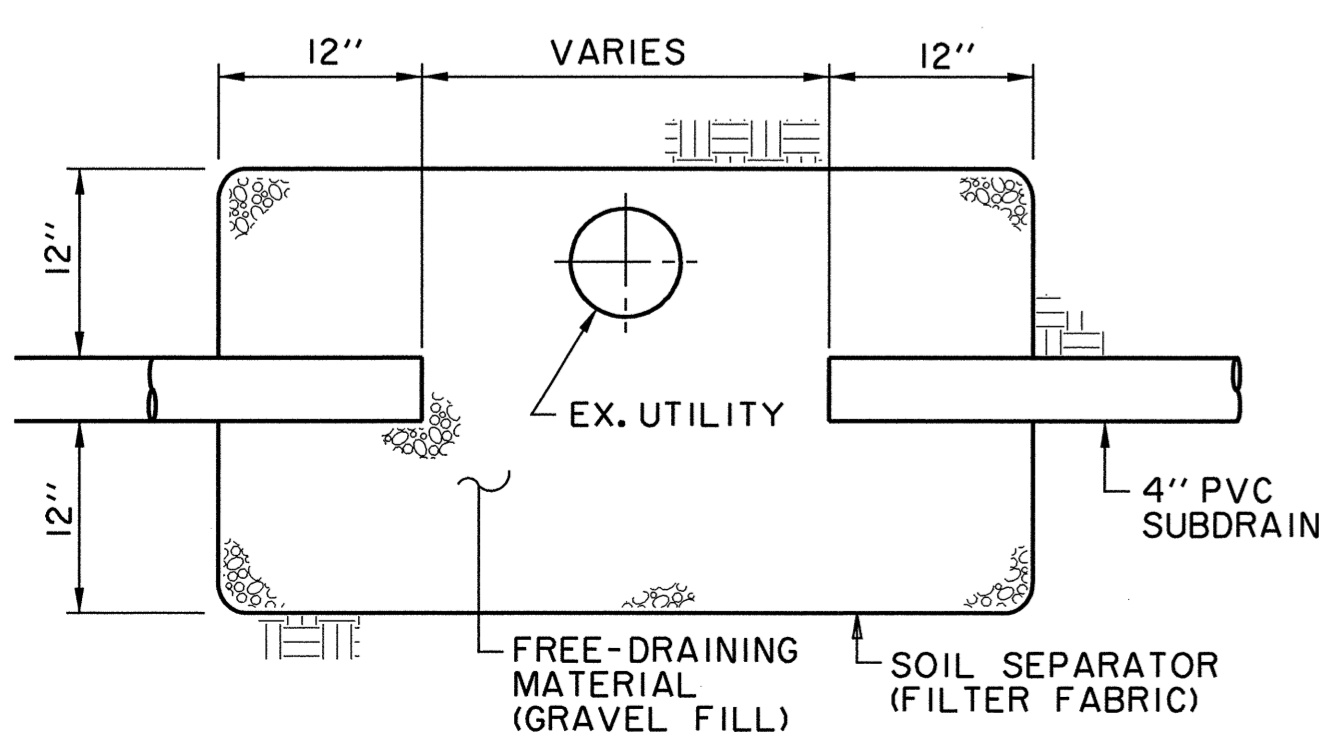
LIGHT FIXTURE FOUNDATION AND CAP PLAN
(PEDESTRIAN AND VEHICULAR POLE)

N.T.S.



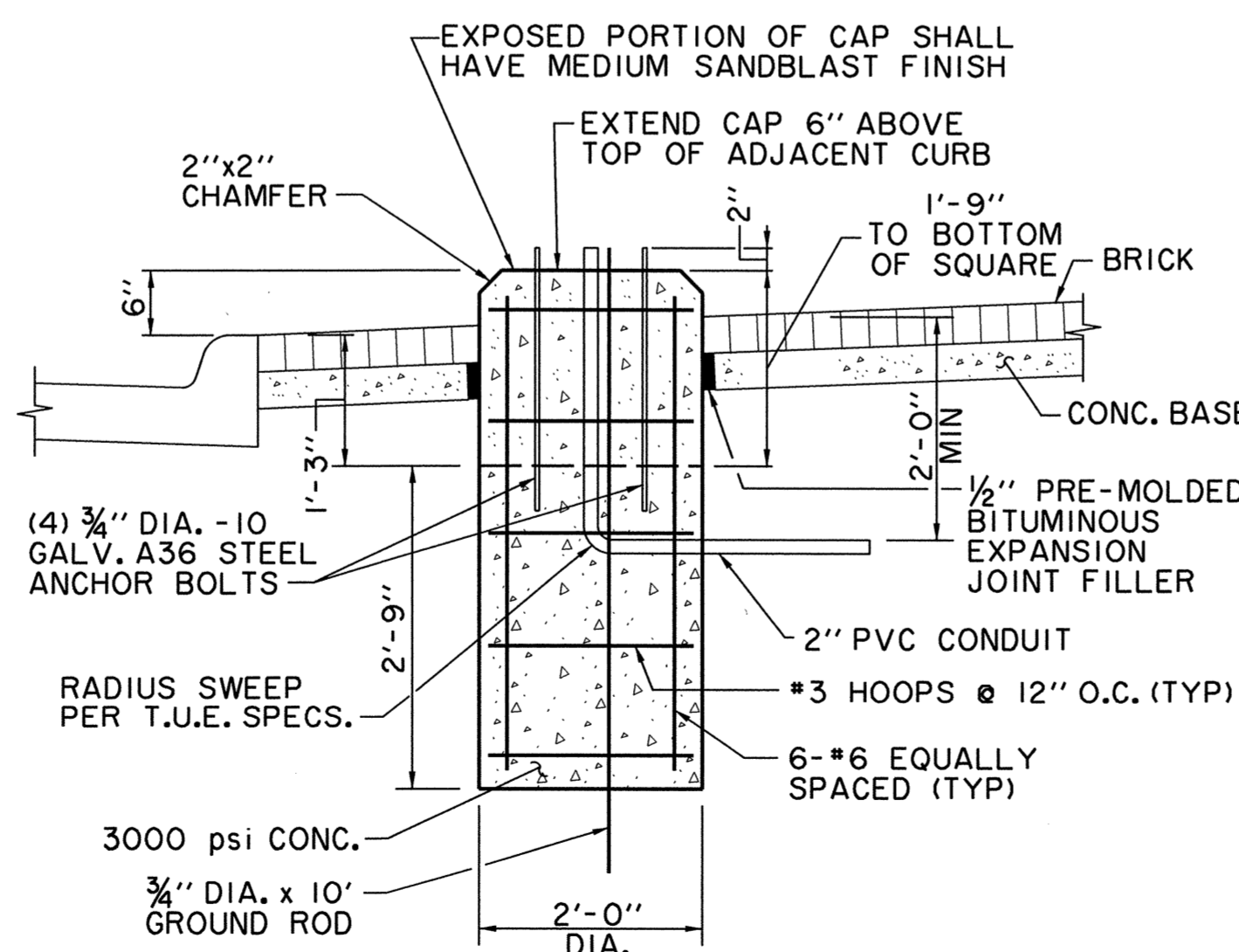
SUBSURFACE DRAIN SYSTEM DETAIL
(SECTION PARALLEL TO CURB)

N.T.S.



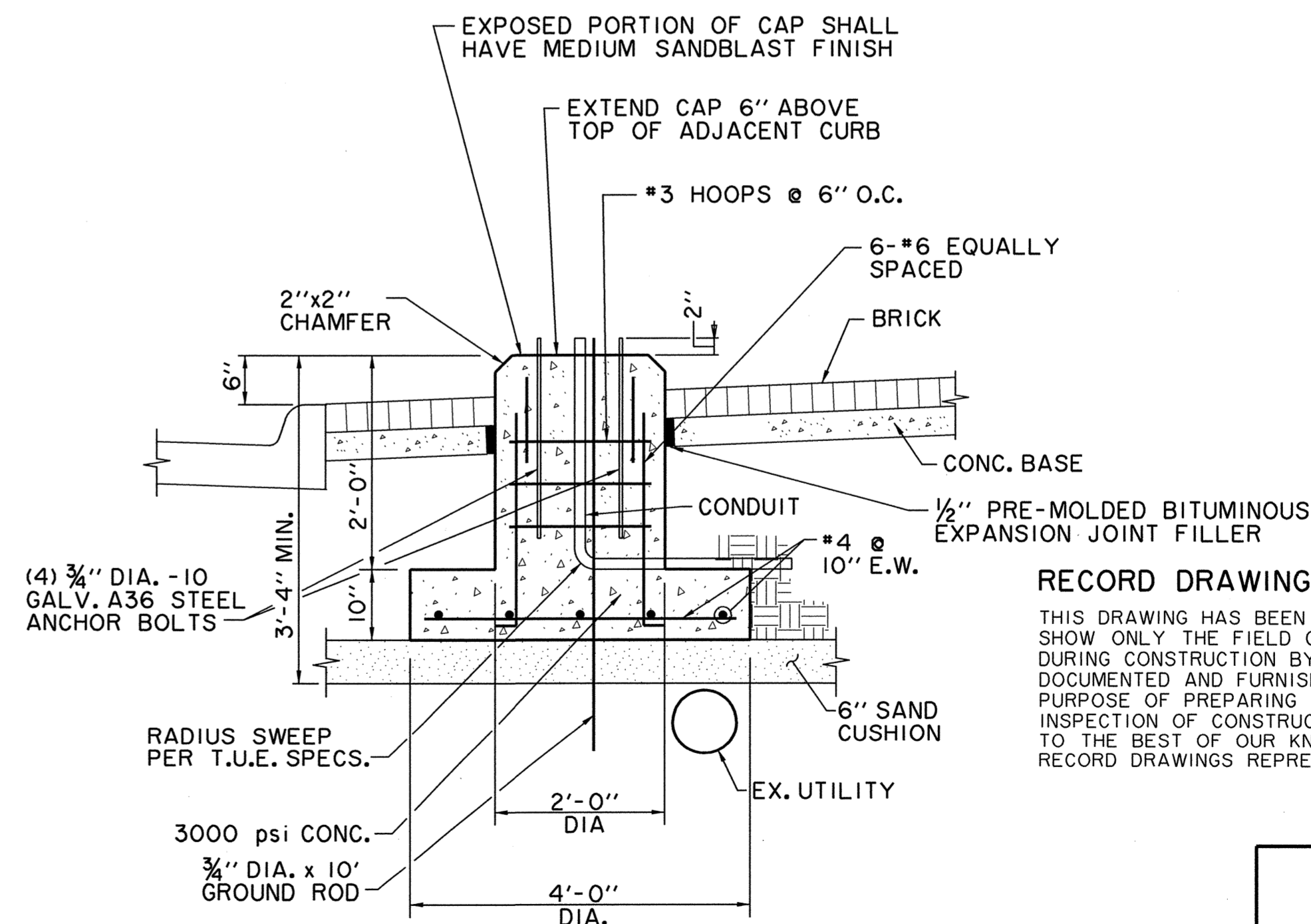
INSTALLATION OF SUBDRAIN
AT UTILITY CONFLICT

N.T.S.



PEDESTRIAN LIGHT FIXTURE FOUNDATION
AND CAP SECTION

N.T.S.



ALTERNATE PEDESTRIAN LIGHT FIXTURE FOOTING
AT UTILITY CONFLICT

N.T.S.

(NOT TO BE USED FOR HANGING LIGHT FOUNDATION)

STREET LIGHTING NOTES

1. THE PEDESTRIAN STREET LIGHTING FOR THIS PROJECT WILL CONSIST OF INSTALLATION OF 2" PVC CONDUIT, LIGHT POLE BASES, PULL BOXES (HANDHOLES) LIGHT POLES, LUMINAIRES, WIRING & CONNECTION TO POWER SOURCE AS A COMPLETE SYSTEM PER DETAILED SPECIFICATIONS.
2. ALL STREET LIGHTING CONDUIT IS TO BE INSTALLED WITH A MIN. OF 24 INCHES OF COVER TO THE TOP OF THE PIPE FROM FINISHED PVMT. TO AVOID CONFLICT WITH IRRIGATION LINES WHICH WILL BE @ 12" & 18" DEPTH. CONDUIT SHOULD BE NO DEEPER THAN 36" TO AVOID CONFLICT WITH OTHER UTILITIES.
3. FOR THE PURPOSES OF COORDINATION, PEDESTRIAN LIGHTS TO BE INTALLED PER THE STREETScape PLANS FOR THIS PROJECT WILL BE THE FOLLOWING:
SEE SHEET C48.00 FOR POLE TYPES.
THIS POLE WILL BE INSTALLED WITH A 175 WATT METAL HALIDE BEGA 9801 ED-17MH/120V FIXTURE AND LUMINAIRE.
POLES WILL BE PRIMED AND PAINTED AT THE FACTORY.
4. LOCATIONS OF ANY STREET LIGHTS MAY NOT BE ALTERED WITHOUT PERMISSION FROM THE ENGINEER.
5. THE LETTER "C" SHALL BE STAMPED OR CHISELED ON CURB AT ALL LOCATIONS OF CONDUIT UNDER STREETS, DRIVES AND INTERSECTIONS.

RECORD DRAWING

THIS DRAWING HAS BEEN MODIFIED FROM THE ORIGINAL TO SHOW ONLY THE FIELD CHANGES AND ADJUSTMENTS MADE DURING CONSTRUCTION BY THE CONTRACTOR WHICH WERE DOCUMENTED AND FURNISHED TO THE ENGINEER FOR THE PURPOSE OF PREPARING THESE RECORD DRAWINGS. FIELD INSPECTION OF CONSTRUCTION WAS PERFORMED BY OTHERS. TO THE BEST OF OUR KNOWLEDGE AND UNDERSTANDING THESE RECORD DRAWINGS REPRESENT THE "AS-BUILT" CONDITIONS.



STREETScape DETAILS						
ADDISON RESIDENTIAL						
TOWN OF ADDISON, TEXAS						
<small>Huff - Zoltars, Inc. 3131 McKinney Ave., Suite 600, Dallas, TX 75204 Phone (214) 871-3311/Fax (214) 871-0757</small>						
DESIGN	CHECKED	APPR.	SCALE	DATE	PROJECT NO.	NO.
HZI	HZI		N.T.S.	11/20/08		C19