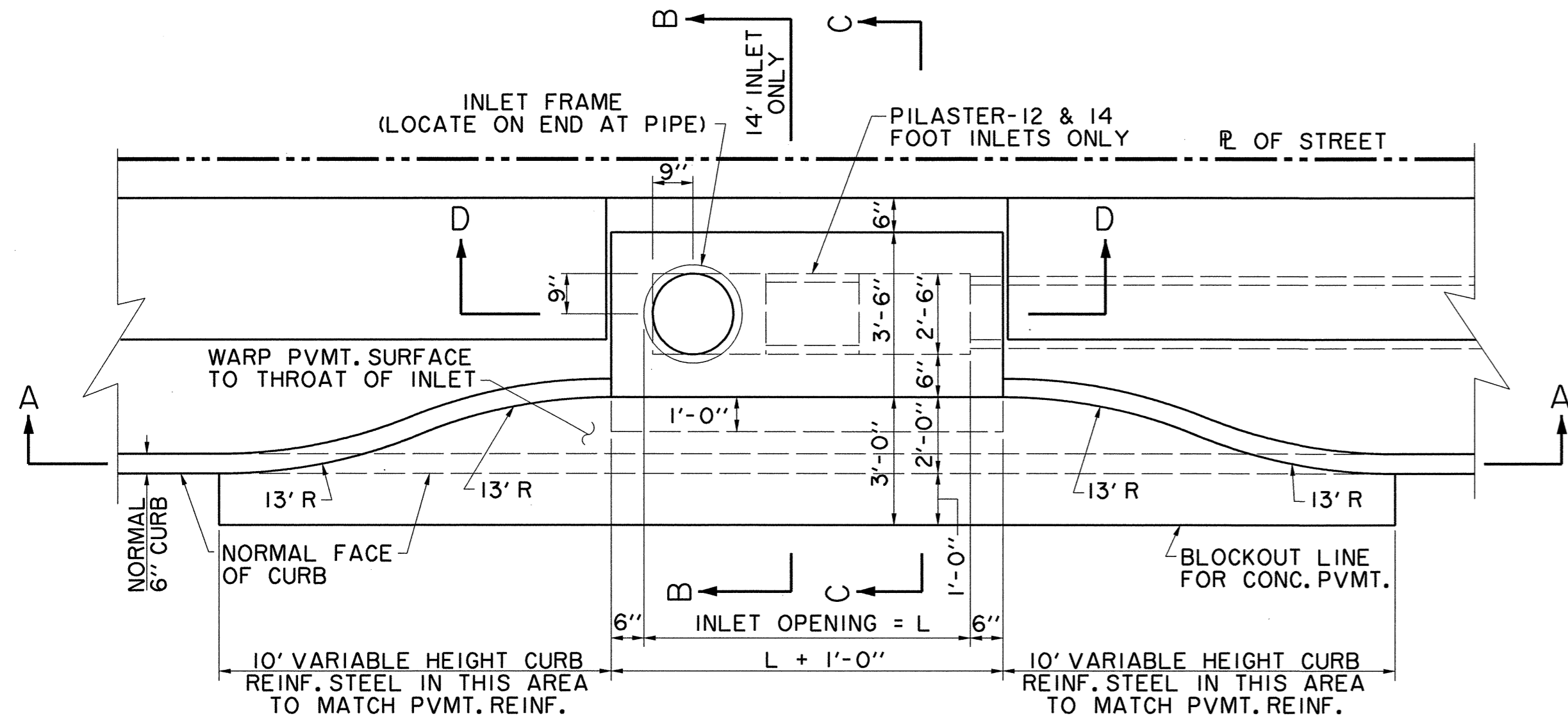
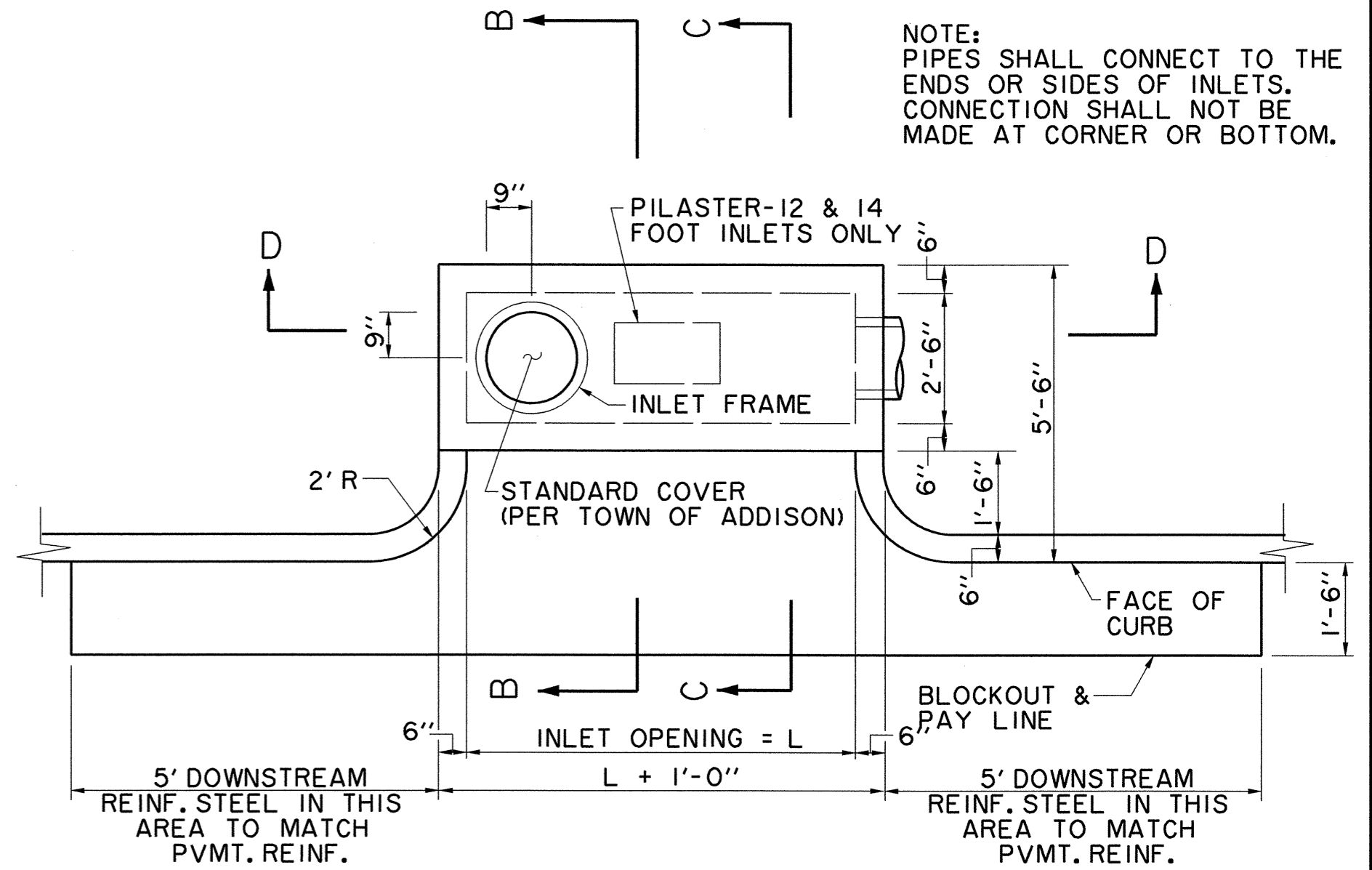
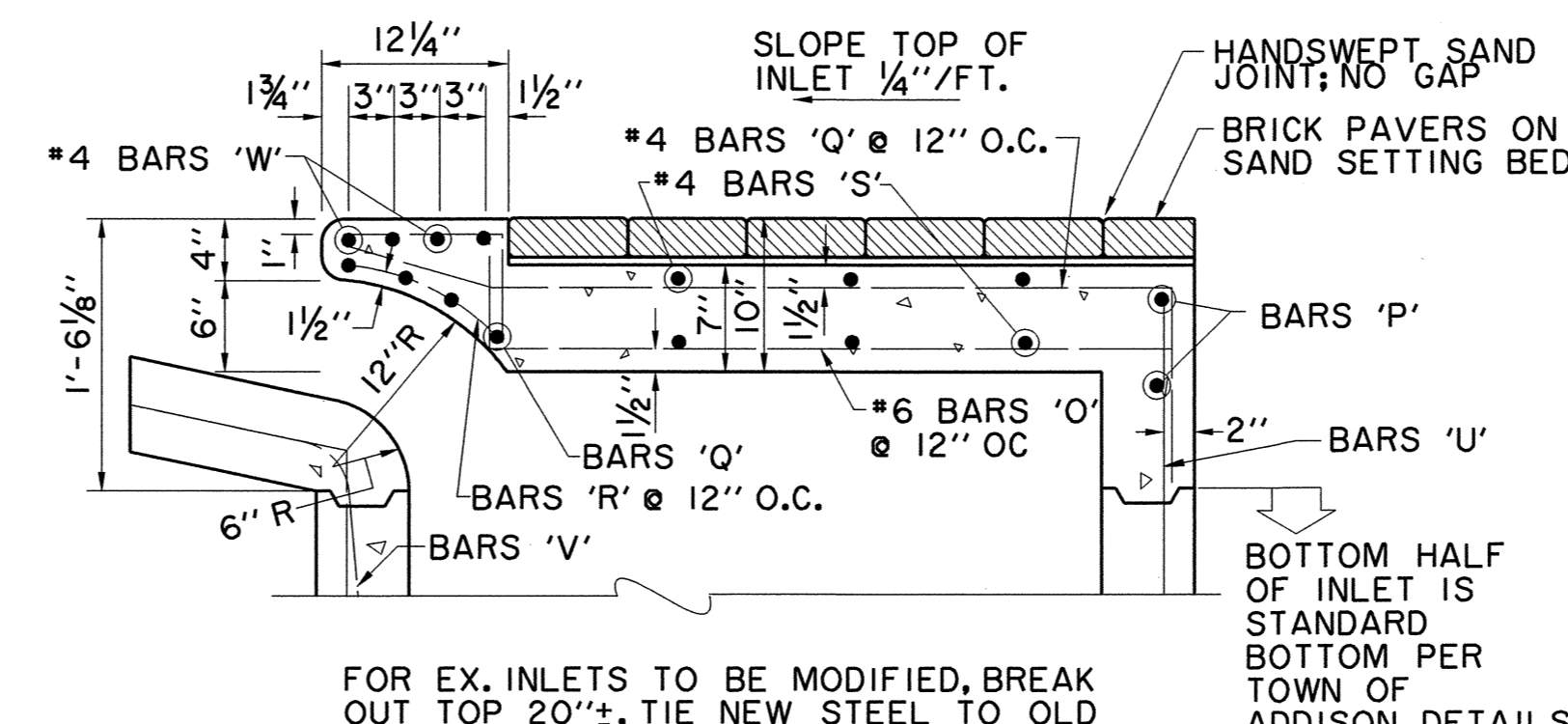
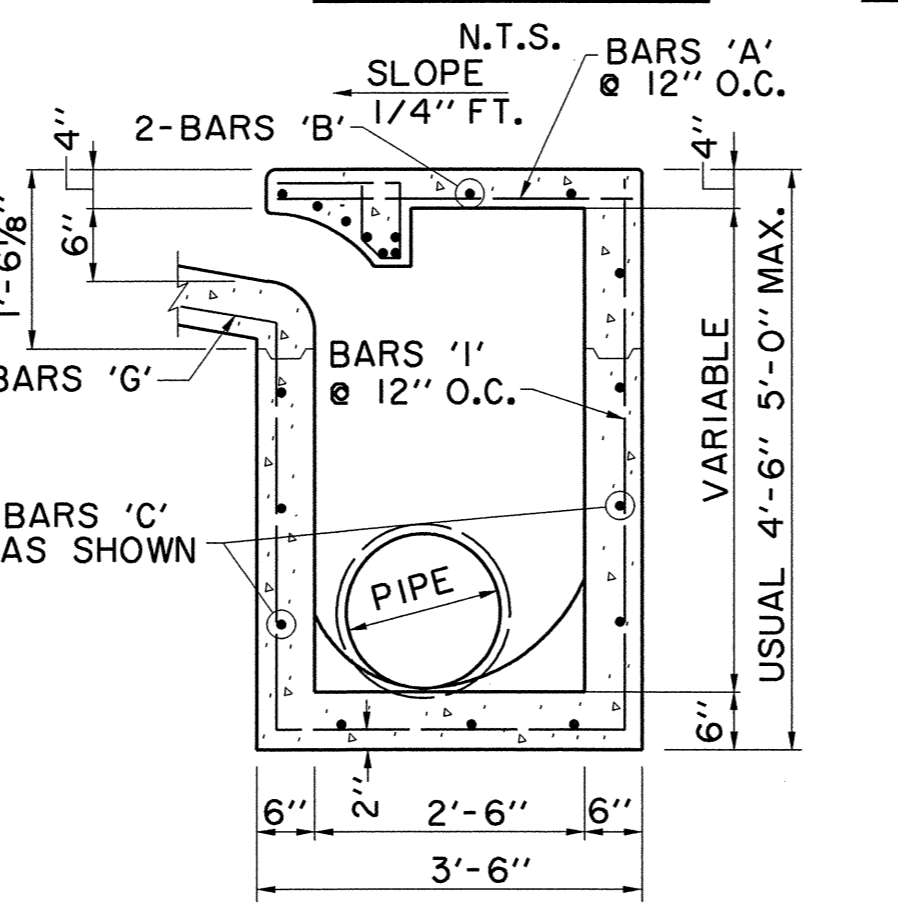
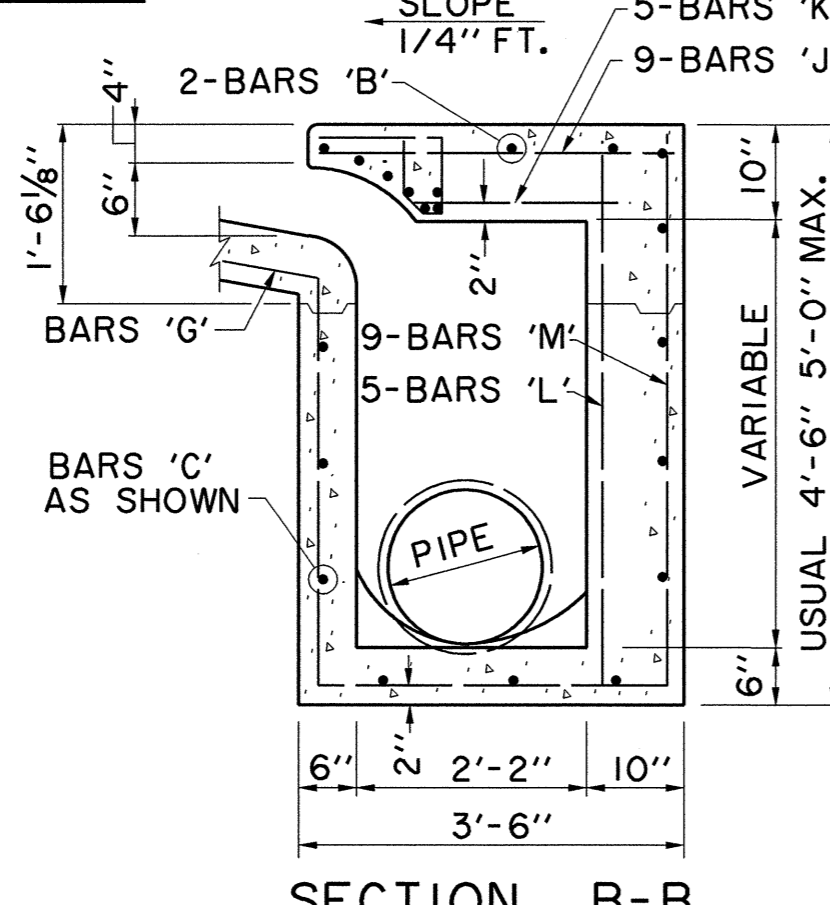
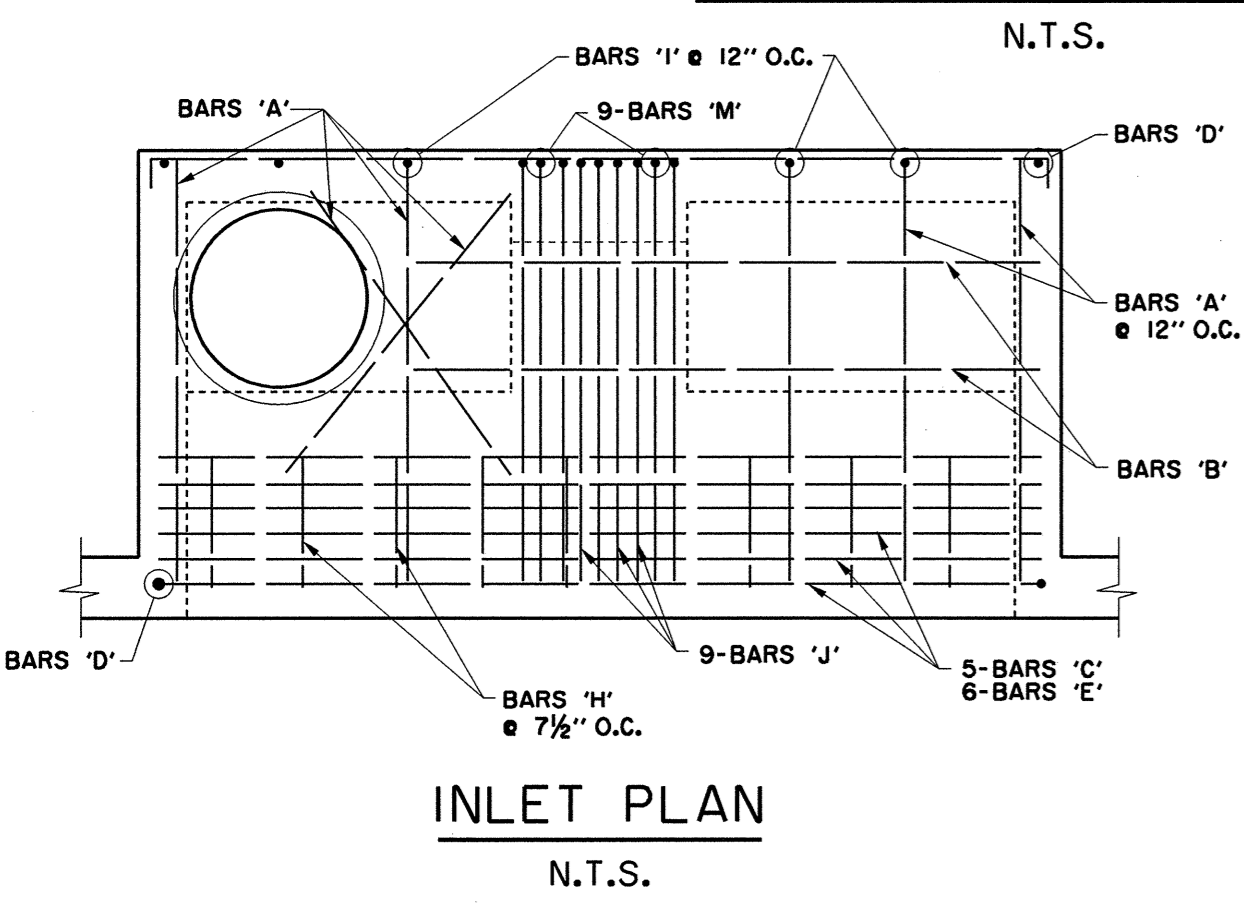
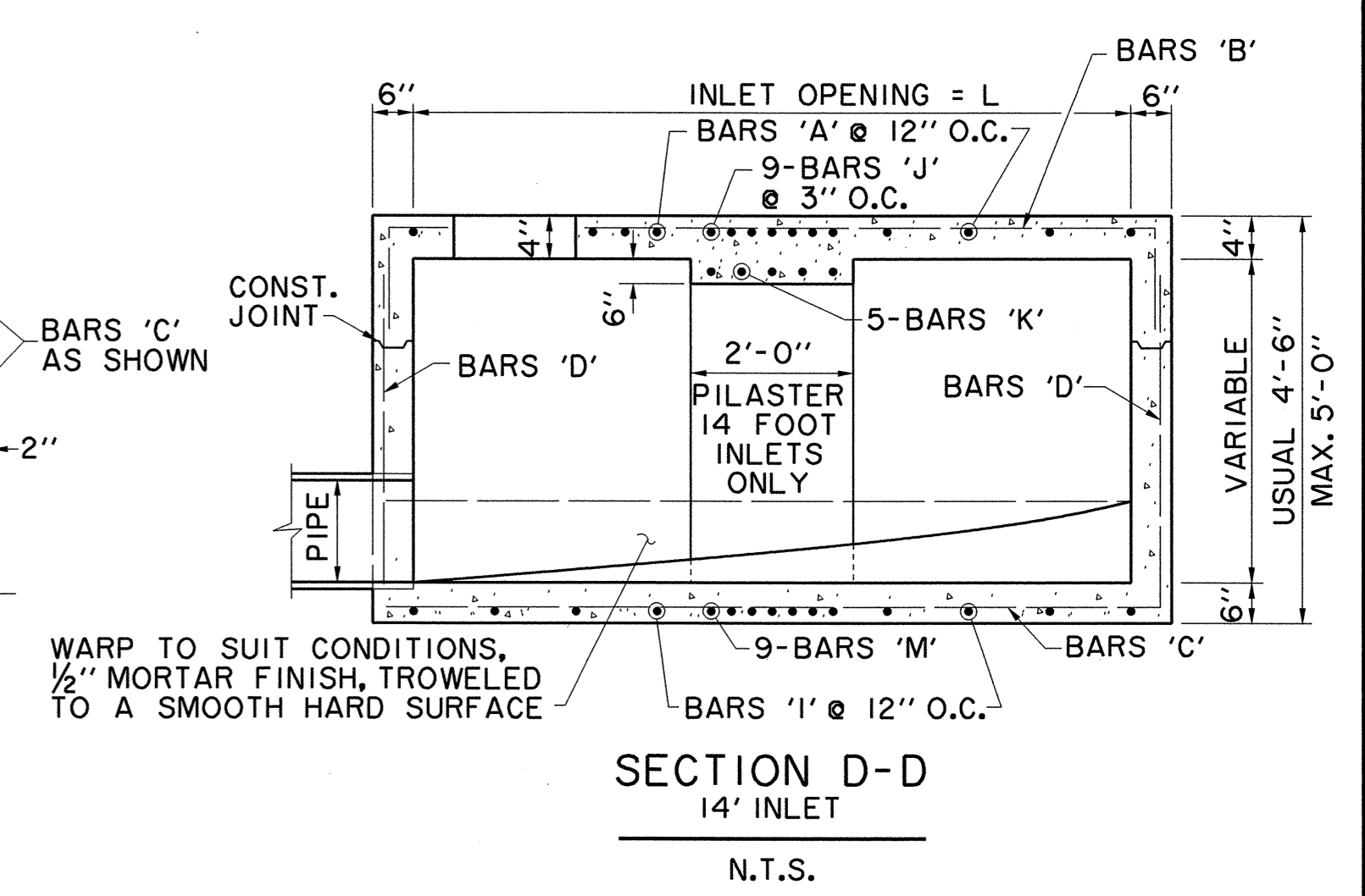
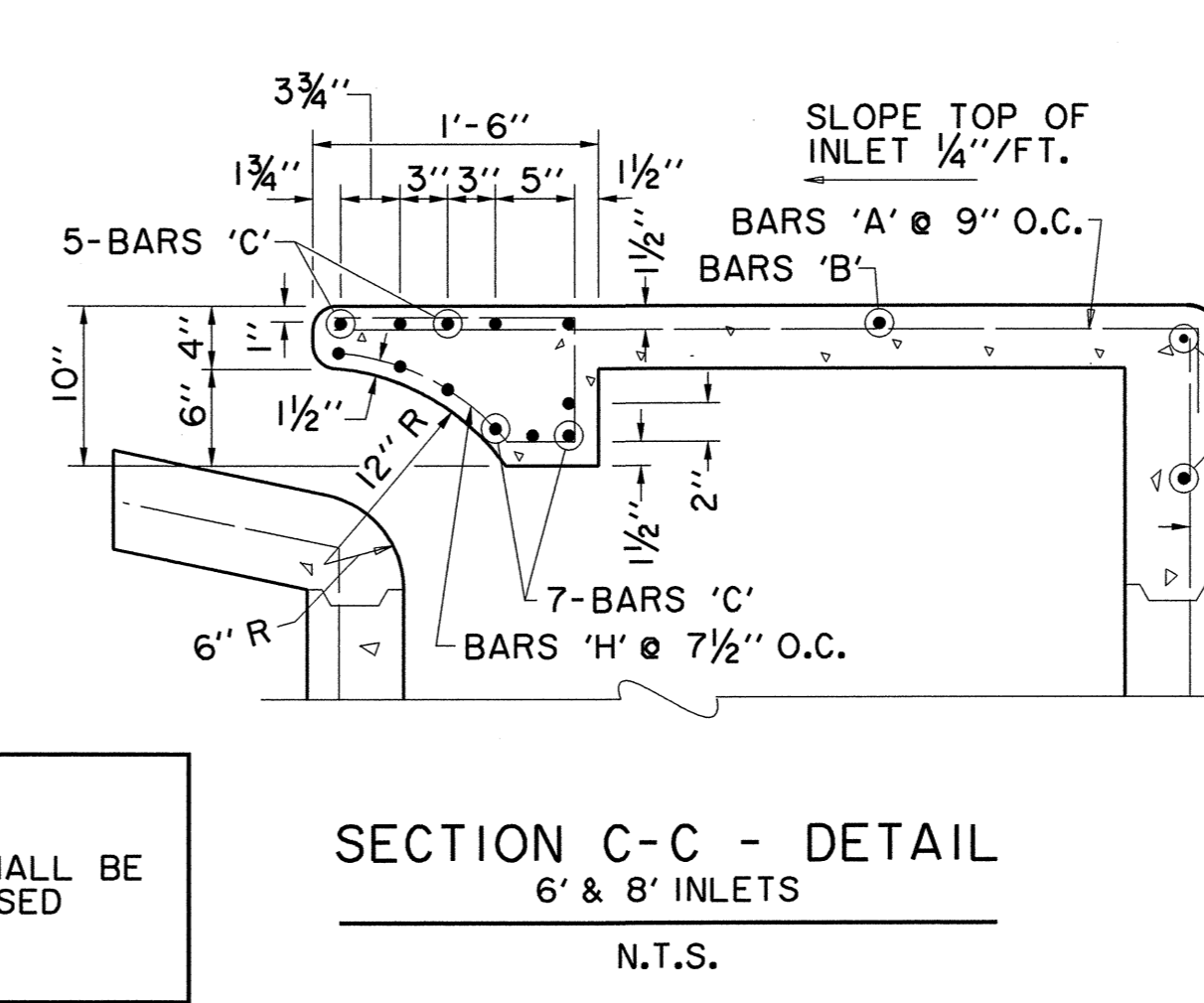


NOTE: ALL INLET & MANHOLE WALLS SHALL BE FORMED. POORING AGAINST EXPOSED EARTH WILL NOT BE PERMITTED.



REINFORCING STEEL SCHEDULE

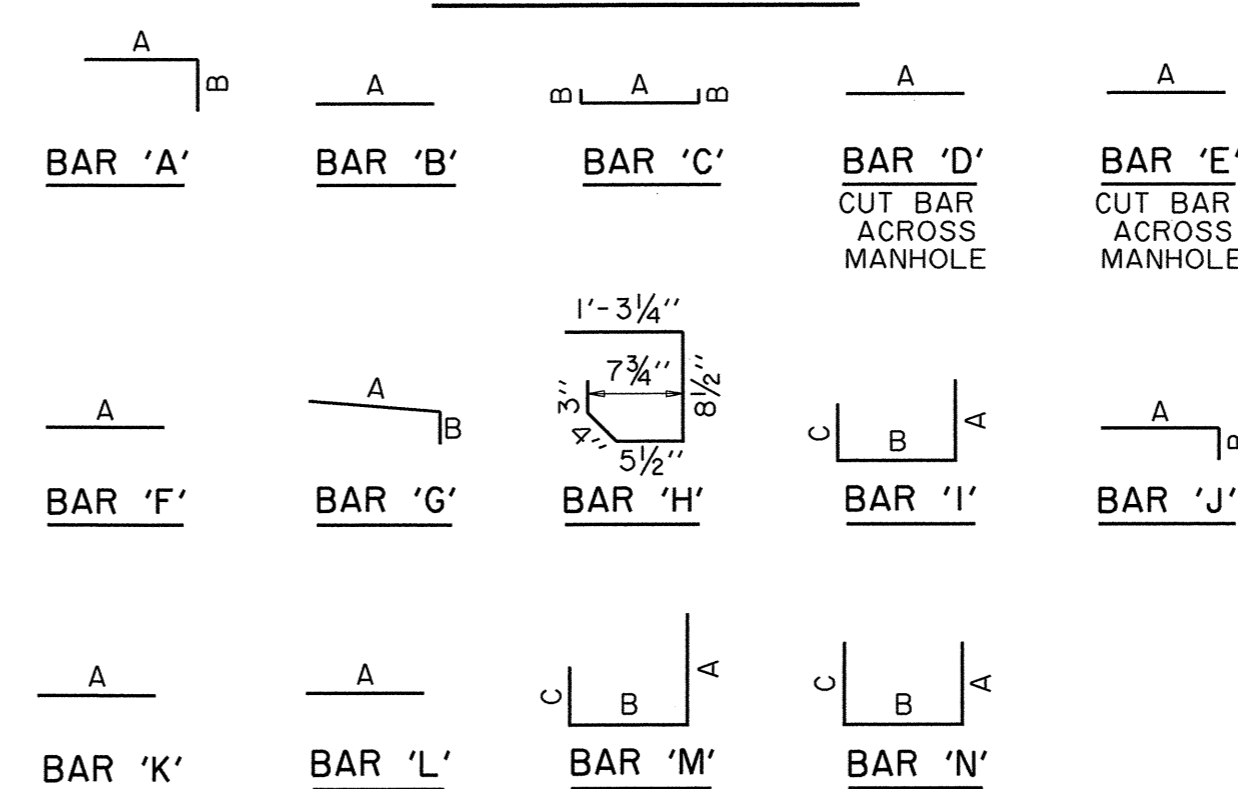
DIMENSION SHOWN ARE FOR MAXIMUM SIZE INLETS

INLET LENGTH	BAR TYPE	BAR NO.	REQ'D	BAR DIMENSIONS		
				A	B	C
6	A	3	9	3'-2"	0'-3"	
	B	3	1	4'-10"		
	C	4	15	6'-8"	0'-6"	
	D	4	1	4'-8"		
	F	4	1	3'-2"		
	G	3	5	2'-0"	1'-3"	
	H	6	8			
	N	3	3	3'-2"	3'-2"	3'-2"
8	A	3	12	3'-2"	0'-3"	
	B	3	1	6'-10"		
	C	4	15	8'-8"	0'-6"	
	D	4	1	4'-8"		
	F	4	1	3'-2"		
	G	3	5	2'-0"	1'-3"	
	H	6	8			
	N	3	3	3'-2"	3'-2"	3'-2"
10	A	3	10	3'-2"	0'-3"	
	B	3	2	8'-10"		
	C	4	16	10'-8"	0'-6"	
	D	4	4	4'-8"		
	E	5	6	10'-8"		
	G	3	5	2'-0"	1'-3"	
	H	3	15			
	I	4	8	4'-8"	3'-2"	3'-2"
	L	4	5	4'-3"		
12	A	3	12	3'-2"	0'-3"	
	B	3	2	10'-10"		
	C	4	16	12'-8"	0'-6"	
	D	4	4	4'-8"		
	E	5	6	12'-8"		
	G	3	5	2'-0"	1'-3"	
	H	3	18			
	I	4	10	4'-8"	3'-2"	3'-2"
	J	5	9	3'-2"	1'-3"	
	K	4	5	2'-3"		
	L	4	5	4'-3"		
	M	5	9	4'-3"	3'-2"	3'-9"
14	A	3	14	3'-2"	0'-3"	
	B	3	2	10'-10"		
	C	4	16	14'-8"	0'-6"	
	D	4	4	4'-8"		
	E	5	6	14'-8"		
	G	3	5	2'-0"	1'-3"	
	H	3	21			
	I	4	12	4'-8"	3'-2"	3'-2"
	J	5	9	3'-2"	1'-3"	
	K	4	5	2'-3"		
	L	4	5	4'-3"		
	M	5	9	4'-3"	3'-2"	3'-9"

SEE DIAGRAM FOR DIMENSIONS

SECTION C-C - DETAIL 10' & 14' INLETS

BAR DIAGRAMS



RECORD DRAWING

THIS DRAWING HAS BEEN MODIFIED FROM THE ORIGINAL TO SHOW ONLY THE FIELD CHANGES AND ADJUSTMENTS MADE DURING CONSTRUCTION BY THE CONTRACTOR WHICH WERE DOCUMENTED AND FURNISHED TO THE ENGINEER FOR THE PURPOSE OF PREPARING THESE RECORD DRAWINGS. FIELD INSPECTION OF CONSTRUCTION WAS PERFORMED BY OTHERS. TO THE BEST OF OUR KNOWLEDGE AND UNDERSTANDING THESE RECORD DRAWINGS REPRESENT THE "AS-BUILT" CONDITIONS.



STORM WATER DETAILS						
ADDISON RESIDENTIAL						
TOWN OF ADDISON, TEXAS						
3131 McKinney Ave., Suite 600, Dallas, TX 75204 Phone (214) 871-3311/Fax (214) 871-0757						
DESIGN	CHECKED	APPR.	SCALE	DATE	PROJECT NO.	NO.
H21	H21		N.T.S.	11/20/08		C28