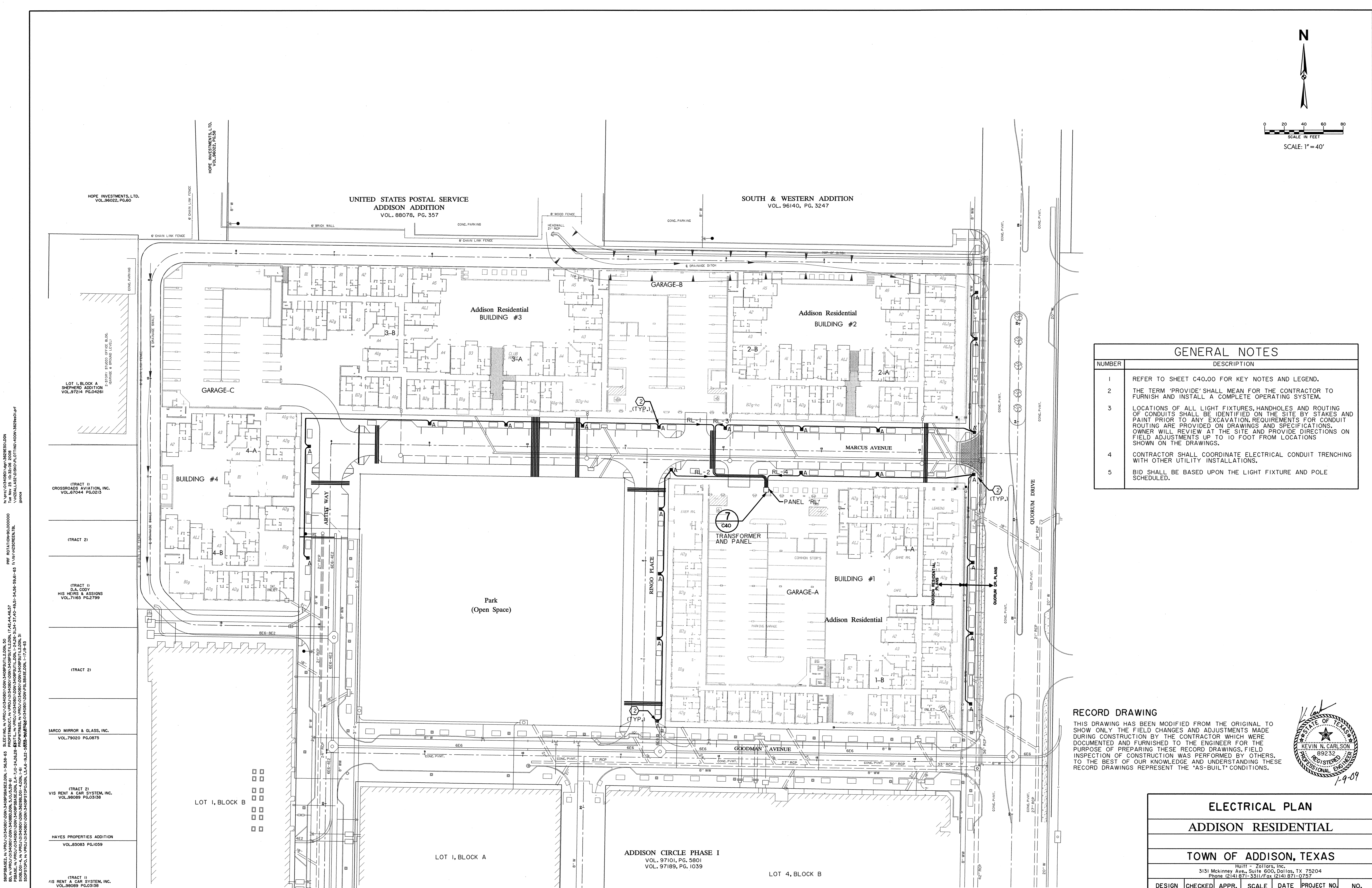




SCALE IN FEET
SCALE: 1" = 40'

GENERAL NOTES	
NUMBER	DESCRIPTION
1	REFER TO SHEET C40.00 FOR KEY NOTES AND LEGEND.
2	THE TERM 'PROVIDE' SHALL MEAN FOR THE CONTRACTOR TO FURNISH AND INSTALL A COMPLETE OPERATING SYSTEM.
3	LOCATIONS OF ALL LIGHT FIXTURES, HANDHOLES AND ROUTING OF CONDUITS SHALL BE IDENTIFIED ON THE SITE BY STAKES AND PAINT PRIOR TO ANY EXCAVATION. REQUIREMENTS FOR CONDUIT ROUTING ARE PROVIDED ON DRAWINGS AND SPECIFICATIONS. OWNER WILL REVIEW AT THE SITE AND PROVIDE DIRECTIONS ON FIELD ADJUSTMENTS UP TO 10 FOOT FROM LOCATIONS SHOWN ON THE DRAWINGS.
4	CONTRACTOR SHALL COORDINATE ELECTRICAL CONDUIT TRENCHING WITH OTHER UTILITY INSTALLATIONS.
5	BID SHALL BE BASED UPON THE LIGHT FIXTURE AND POLE SCHEDULED.



RECORD DRAWING

THIS DRAWING HAS BEEN MODIFIED FROM THE ORIGINAL TO SHOW ONLY THE FIELD CHANGES AND ADJUSTMENTS MADE DURING CONSTRUCTION BY THE CONTRACTOR WHICH WERE DOCUMENTED AND FURNISHED TO THE ENGINEER FOR THE PURPOSE OF PREPARING THESE RECORD DRAWINGS. FIELD INSPECTION OF CONSTRUCTION WAS PERFORMED BY OTHERS: TO THE BEST OF OUR KNOWLEDGE AND UNDERSTANDING THESE RECORD DRAWINGS REPRESENT THE "AS-BUILT" CONDITIONS.



1-9-09

HOPE INVESTMENTS, LTD.
VOL. 88022, PG. 60

HOPE INVESTMENTS, LTD.
VOL. 96140, PG. 3247

LOT I, BLOCK A
SHEPHERD ADDITION
VOL. 97214 PG. 04261

(TRACT 1)
CROSSROADS AVIATION, INC.
VOL. 67044 PG. 0213

(TRACT 2)

(TRACT 1)
D.A. CODY
HIS HEIRS & ASSIGNS
VOL. 71165 PG. 2799

(TRACT 2)

SARCO MIRROR & GLASS, INC.
VOL. 79020 PG. 0675

(TRACT 2)
VIS RENT A CAR SYSTEM, INC.
VOL. 89069 PG. 0318

HAYES PROPERTIES ADDITION
VOL. 83083 PG. 1059

(TRACT 1)
VIS RENT A CAR SYSTEM, INC.
VOL. 89069 PG. 0318

ELECTRICAL PLAN						
ADDISON RESIDENTIAL						
TOWN OF ADDISON, TEXAS						
				HUI11 - Zollars, Inc. 3131 McKinney Ave., Suite 600, Dallas, TX 75204 Phone (214) 871-3311/Fax (214) 871-0757		
DESIGN	CHECKED	APPR.	SCALE	DATE	PROJECT NO.	NO.
HZI	HZI	DEM	1"=40'	11/20/08		C39