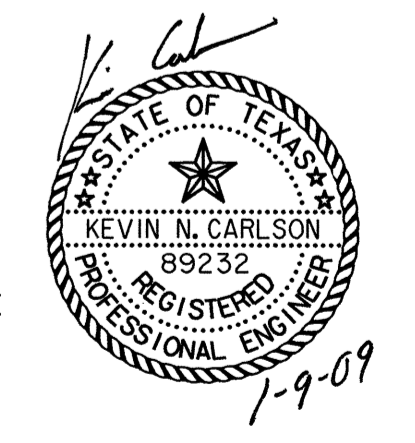


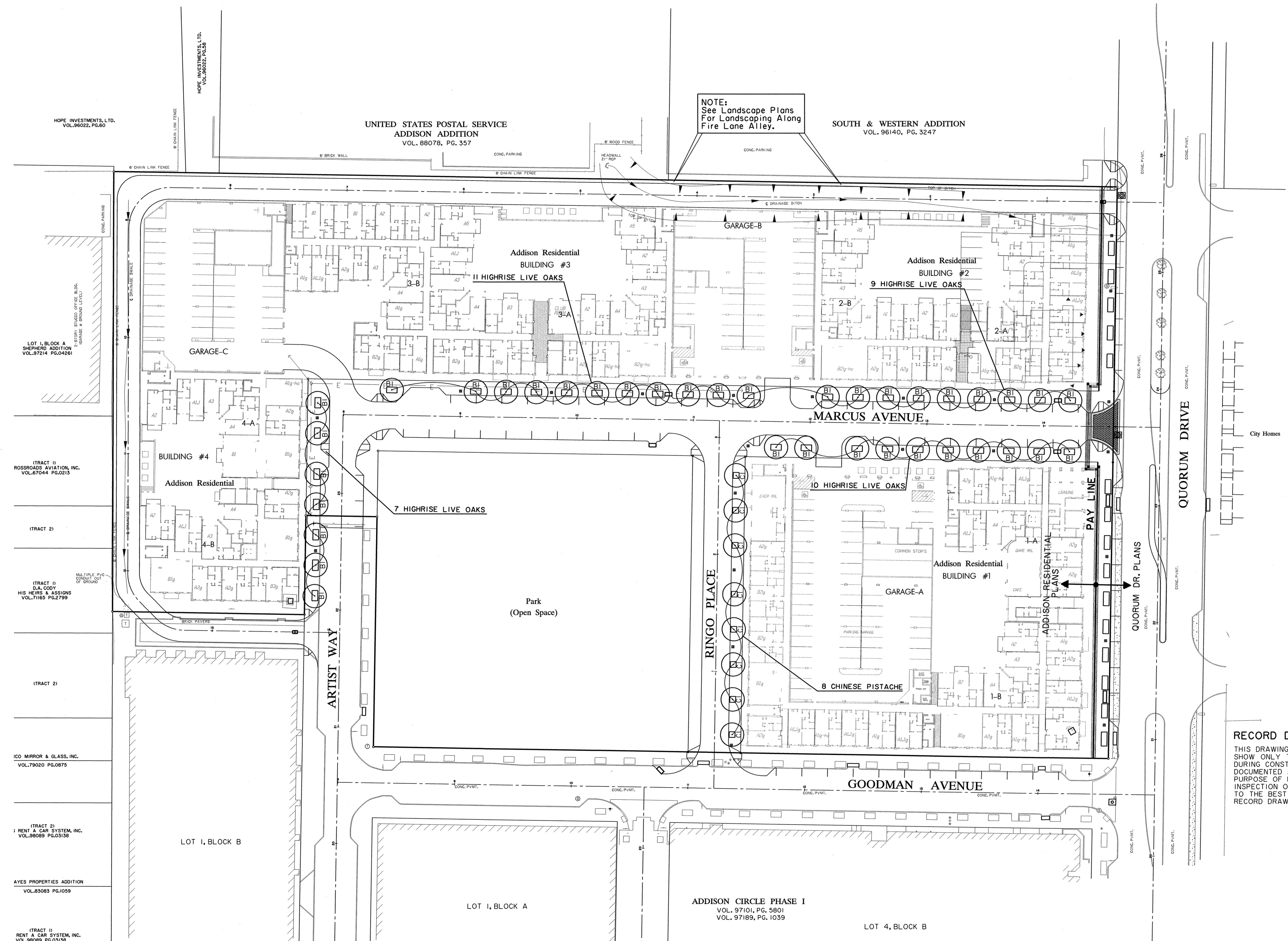
NOTE:  
See Landscape Plans  
For Landscaping Along  
Fire Lane Alley.

NOTE:  
SEE SHEET C42 FOR PLANTER  
TYPE DETAILS

**RECORD DRAWING**  
THIS DRAWING HAS BEEN MODIFIED FROM THE ORIGINAL TO  
SHOW ONLY THE FIELD CHANGES AND ADJUSTMENTS MADE  
DURING CONSTRUCTION BY THE CONTRACTOR WHICH WERE  
DOCUMENTED AND FURNISHED TO THE ENGINEER FOR THE  
PURPOSE OF PREPARING THESE RECORD DRAWINGS. FIELD  
INSPECTION OF CONSTRUCTION WAS PERFORMED BY OTHERS.  
TO THE BEST OF OUR KNOWLEDGE AND UNDERSTANDING THESE  
RECORD DRAWINGS REPRESENT THE "AS-BUILT" CONDITIONS.



PLANTING & FURNITURE PLAN						
ADDISON RESIDENTIAL						
TOWN OF ADDISON, TEXAS						
<small>HUFF - ZOLLERS, INC. 3131 McKinney Ave., Suite 600, Dallas, TX 75204 Phone (214) 871-3311/Fax (214) 871-0757</small>						
DESIGN	CHECKED	APPR.	SCALE	DATE	PROJECT NO.	NO.
HZ1	HZ1	DEM	1"=40'	11/20/08		C41



EX. FILET, IN: VPROJ\01340801\ADDISON\RESID\RESID\_44.dwg  
BASE IN: VPROJ\01340801\ADDISON\RESID\RESID\_44.dwg  
SHEET: 4, IN: VPROJ\01340801\ADDISON\RESID\RESID\_44.dwg  
SHEET NO.: 4, IN: VPROJ\01340801\ADDISON\RESID\RESID\_44.dwg  
DATE: 11/20/08, TIME: 1:58:43 PM  
DRAWN BY: K. CARLSON  
CHECKED BY: K. CARLSON  
APPROVED BY: K. CARLSON

IN: VPROJ\01340801\ADDISON\RESID\RESID\_44.dwg  
REF: ROTATION: 0.000000  
FILE: H:\VPROJ\RESID\RESID\_44.dwg

IN: VPROJ\01340801\ADDISON\RESID\RESID\_44.dwg  
REF: ROTATION: 0.000000  
FILE: H:\VPROJ\RESID\RESID\_44.dwg

IN: VPROJ\01340801\ADDISON\RESID\RESID\_44.dwg  
REF: ROTATION: 0.000000  
FILE: H:\VPROJ\RESID\RESID\_44.dwg

IN: VPROJ\01340801\ADDISON\RESID\RESID\_44.dwg  
REF: ROTATION: 0.000000  
FILE: H:\VPROJ\RESID\RESID\_44.dwg

IN: VPROJ\01340801\ADDISON\RESID\RESID\_44.dwg  
REF: ROTATION: 0.000000  
FILE: H:\VPROJ\RESID\RESID\_44.dwg

IN: VPROJ\01340801\ADDISON\RESID\RESID\_44.dwg  
REF: ROTATION: 0.000000  
FILE: H:\VPROJ\RESID\RESID\_44.dwg

IN: VPROJ\01340801\ADDISON\RESID\RESID\_44.dwg  
REF: ROTATION: 0.000000  
FILE: H:\VPROJ\RESID\RESID\_44.dwg

IN: VPROJ\01340801\ADDISON\RESID\RESID\_44.dwg  
REF: ROTATION: 0.000000  
FILE: H:\VPROJ\RESID\RESID\_44.dwg

IN: VPROJ\01340801\ADDISON\RESID\RESID\_44.dwg  
REF: ROTATION: 0.000000  
FILE: H:\VPROJ\RESID\RESID\_44.dwg

HOPE INVESTMENTS, LTD.  
VOL. 96022, PG. 60

UNITED STATES POSTAL SERVICE  
ADDISON ADDITION  
VOL. 88078, PG. 357

SOUTH & WESTERN ADDITION  
VOL. 96140, PG. 3247

LOT 1, BLOCK A  
SHEPHERD ADDITION  
VOL. 97214, PG. 04261

(TRACT 1)  
ROSSROADS AVIATION, INC.  
VOL. 67044, PG. 0213

(TRACT 2)

(TRACT 1)  
HIS HEIRS & ASSIGNS  
VOL. 71165, PG. 2799

(TRACT 2)

ICO MIRROR & GLASS, INC.  
VOL. 79020, PG. 0875

(TRACT 2)  
RENT A CAR SYSTEM, INC.  
VOL. 98069, PG. 03158

AYES PROPERTIES ADDITION  
VOL. 82083, PG. 1059

(TRACT 1)  
RENT A CAR SYSTEM, INC.  
VOL. 98069, PG. 03158

ADDISON CIRCLE PHASE I  
VOL. 97101, PG. 5801  
VOL. 97189, PG. 1039

LOT 4, BLOCK B