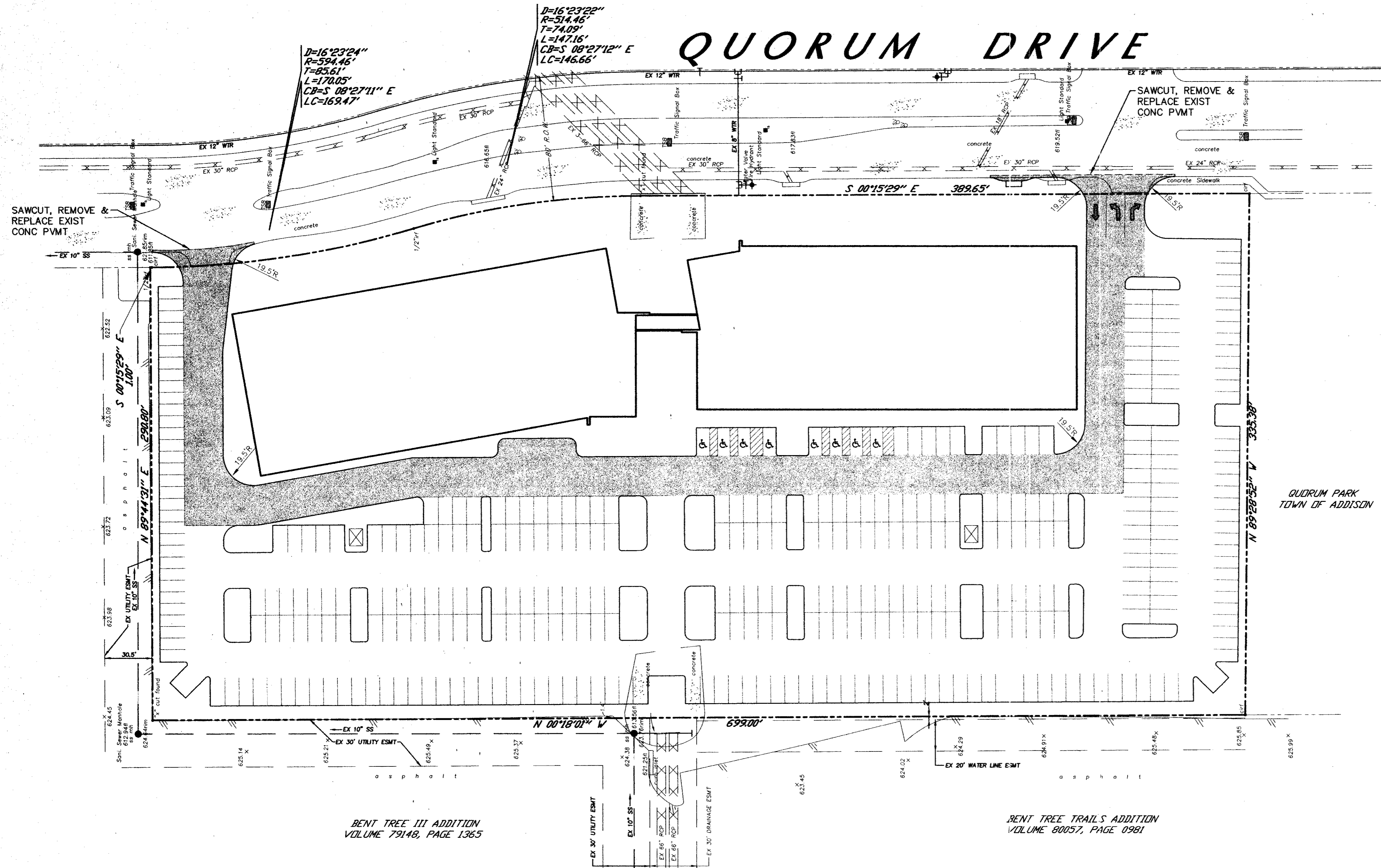


# QUORUM DRIVE

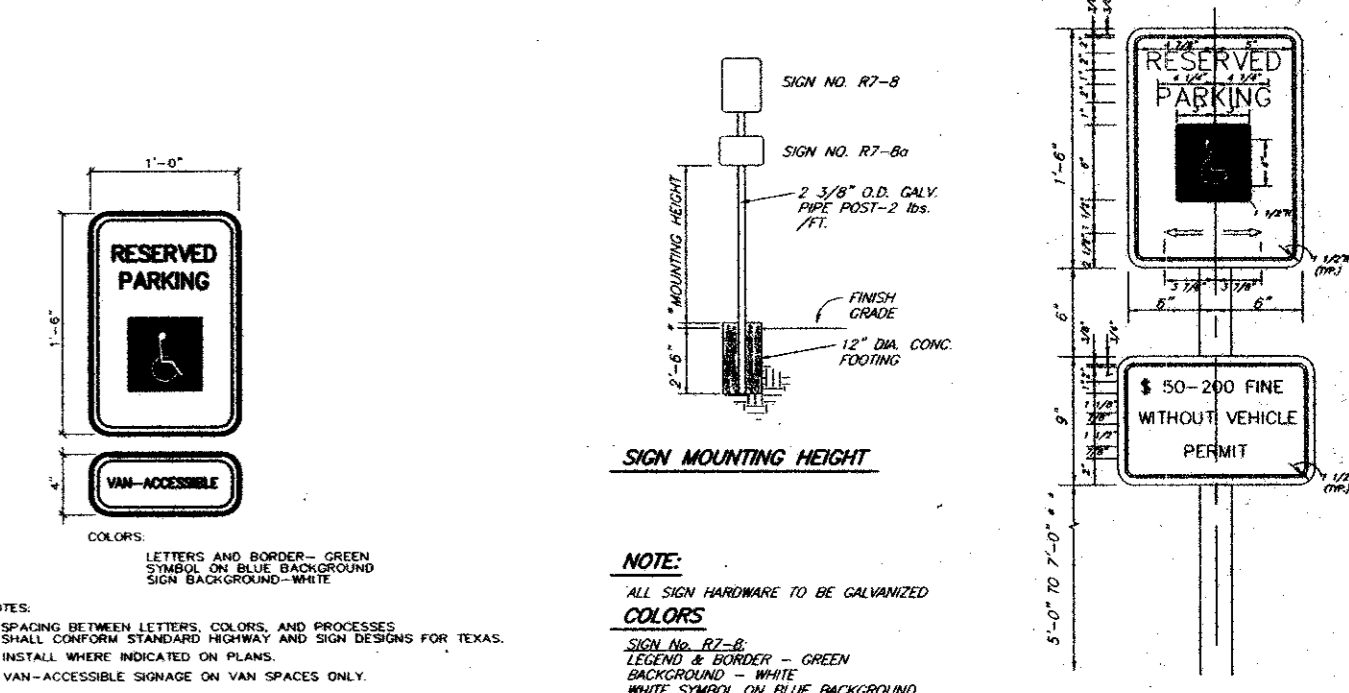
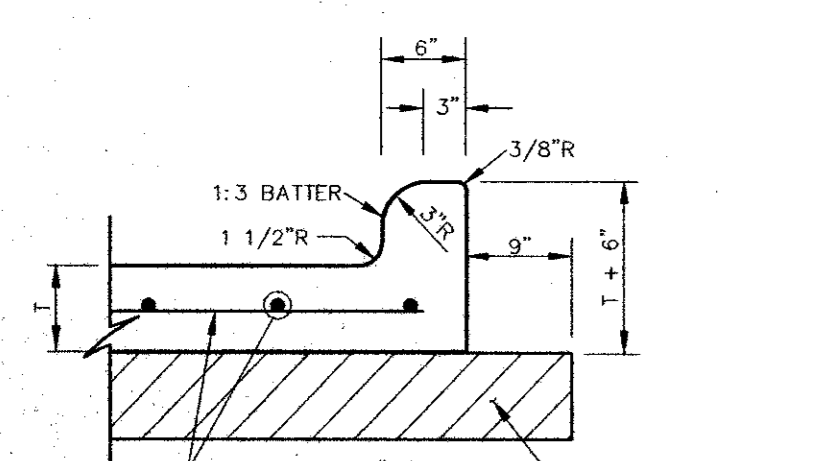
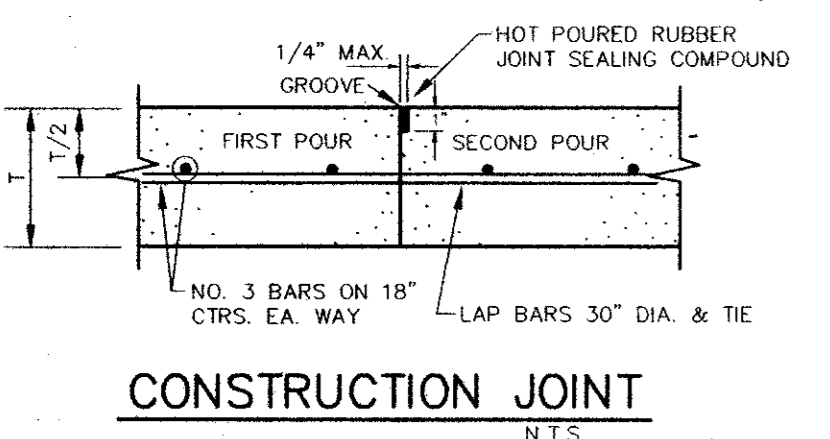
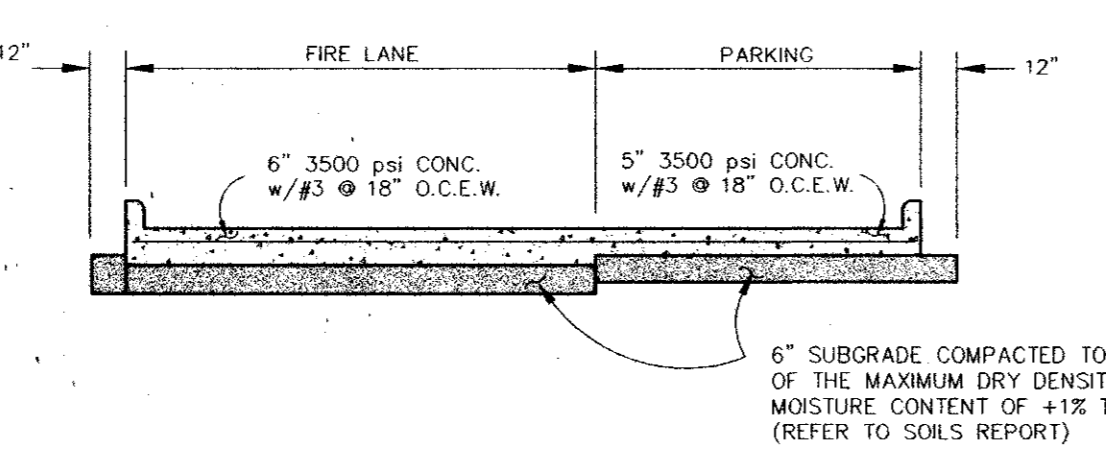
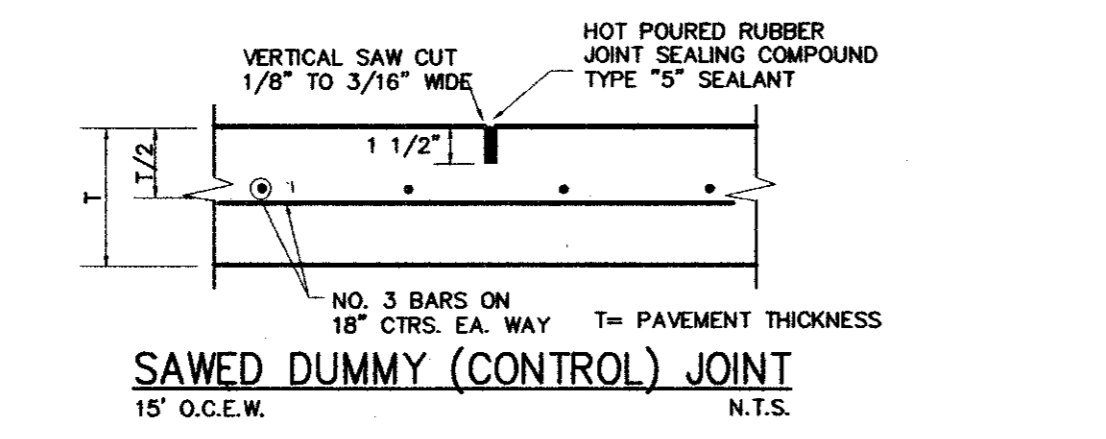
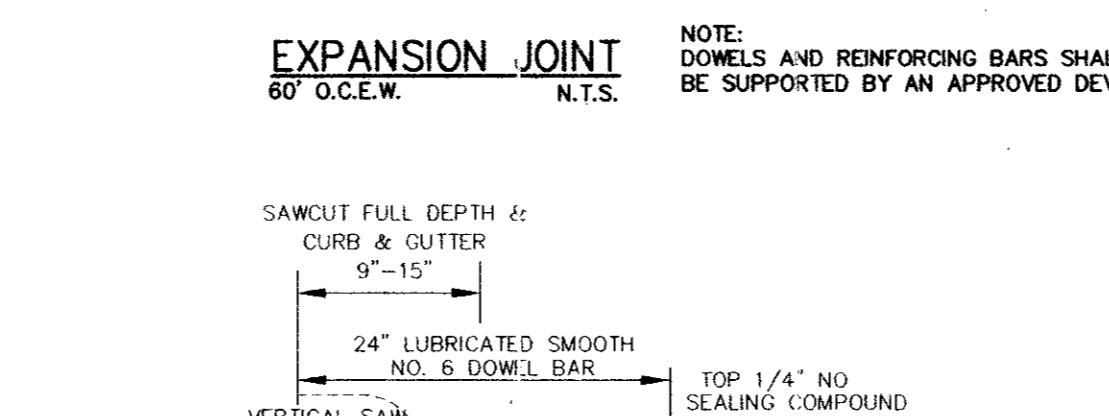
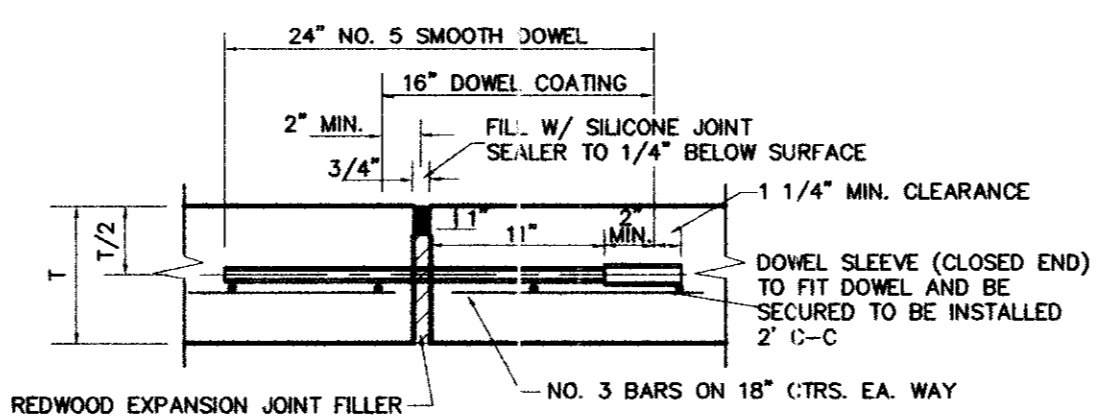


### General Notes

- All materials and construction shall conform to the Town of Addison's standards and specifications.
- It will be the responsibility of the contractor to protect all public utilities in the construction of this project. All manholes, clean-outs, valve boxes, fire hydrants, etc. must be adjusted to proper line and grade by the Contractor prior to and after the placing of permanent paving. Utilities must be maintained to proper line and grade during construction of this project.
- The Contractor will be responsible for coordinating with all the appropriate utility companies for the location of all utilities within the construction area.
- The Paving Contractor shall coordinate with the Utility Contractor to insure all sleeving for irrigation has been installed prior to placement of permanent pavement.
- All paving and earthwork operations shall conform to the recommendations in the Geotechnical Investigation Report. (TERRACON REPORT NO. 17975379 DATED 9/9/97)
- All dimensions are to back of curb unless otherwise noted.
- All curb return radii are 1.5' unless otherwise noted.
- All construction debris shall be legally disposed of offsite.

### LEGEND

- Existing Curb
- Proposed Curb
- Proposed 5" Pavement  
5" 3500 psi  
Concrete Reinforced w/ #3 Bars  
@ 18" O.C.E.W.  
(Parking Areas)
- Proposed 6" Pavement  
6" 3500 psi  
Concrete Reinforced w/ #3 Bars  
@ 18" O.C.E.W.  
(Fire Lane & Drive Approaches)



**JAMES A. RILEY**  
Professional Engineer  
No. 73031  
02.29.98

<b>PAVING PLAN</b>						
<b>PARKSIDE CORPORATE CENTER</b>						
<b>TOWN OF ADDISON</b>						
<b>DALLAS COUNTY, TEXAS</b>						
<b>BROCKETTE · DAVIS · DRAKE, inc.</b> consulting engineers Civil & Structural Engineering-Surveying 4144 North Central Expressway, Suite 1100 Dallas, Texas 75204 (214) 624-3647, fax (214) 624-7064						
DESIGN	DRAWN	DATE	SCALE	NOTES	FILE	NO.
JAR	DJR	7/98	1"=40'	BDD	C98271	C-3

**BENCHMARK:**  
SQUARE CUT ON END OF CURB LOCATED ON DRIVEWAY ON THE NORTH SIDE OF KELLER SPRINGS, APPROX. 500' WEST OF DALLAS PARKWAY ELEV = 626.24'