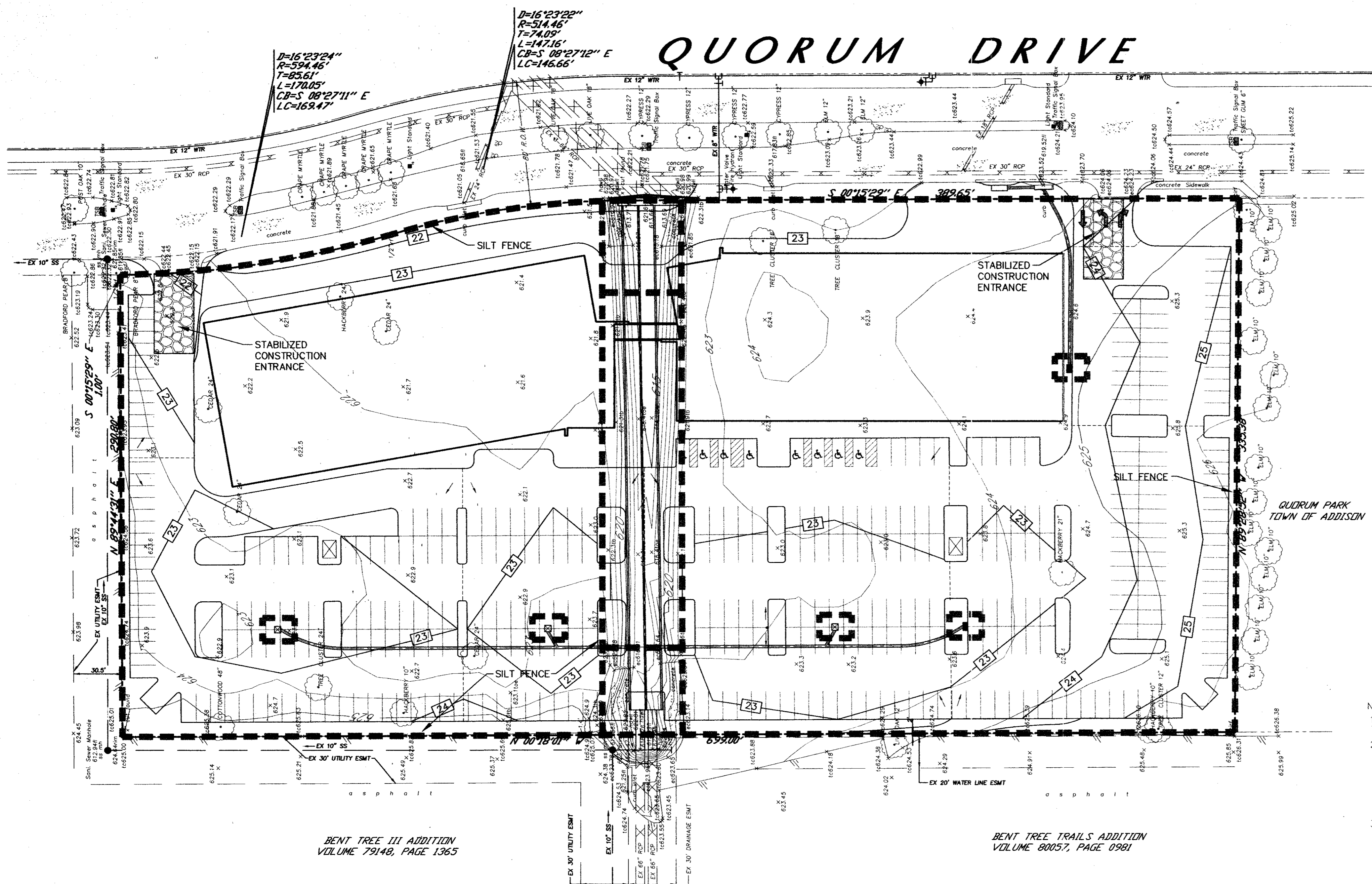
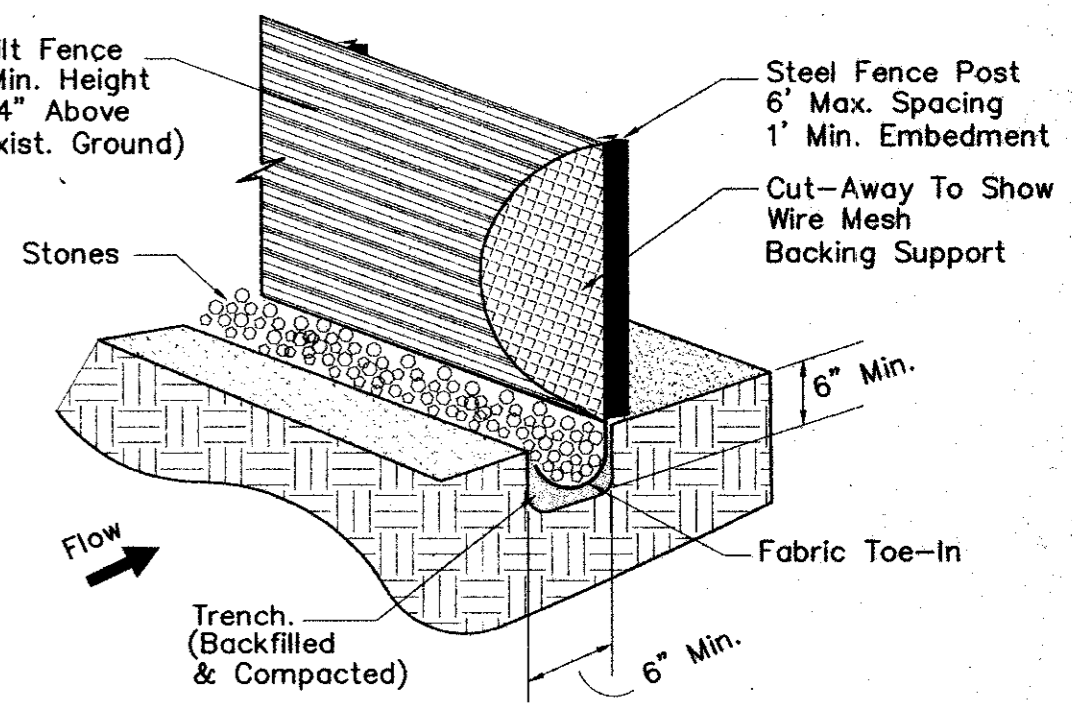


QUORUM DRIVE



CONSTRUCTION NOTES - SILT FENCE

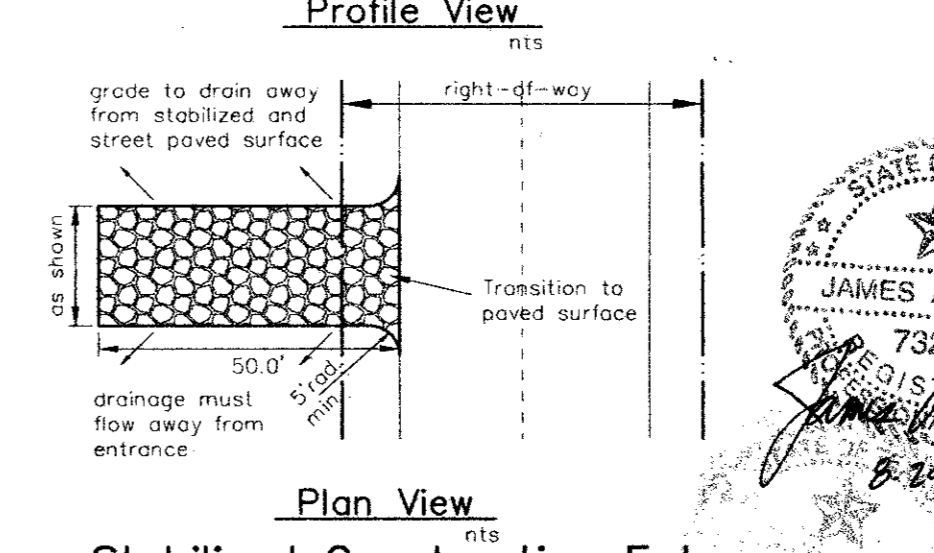
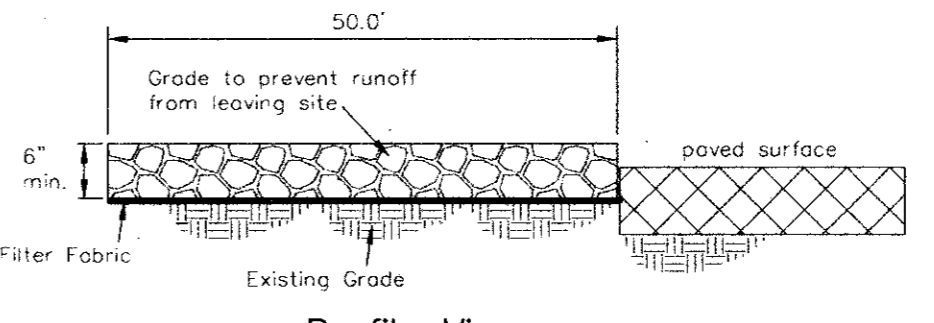
- Steel posts which support the silt fence shall be installed on a slight angle toward the anticipated runoff source. The post must be embedded a minimum of one foot.
- The toe of the silt fence shall be trenched in with a spade or mechanical trencher, so that the downslope face of the trench is flat and perpendicular to the line of flow. Where fence cannot be trenched in (e.g. pavement), weight fabric flap with washed gravel on the uphill side to prevent flow under fence.
- The trench must be a minimum of 6 inches deep and 6 inches wide to allow for the silt fence fabric to be laid in the ground and backfilled with compacted material.
- Silt fence shall be securely fastened to each steel support post or to woven wire, which is in turn attached to the steel support post. There shall be a 6 inch double overlap, securely fastened where ends of fabric meet.
- Inspection shall be made weekly or after each rainfall. Repair or replacement shall be made promptly as needed.
- Silt fence shall be removed when the site is completely stabilized so as not to block or impede storm flow or drainage.
- Accumulated silt shall be removed when it reached a depth of 6 inches. The silt shall be disposed of at an approved site and in such a manner as to not contribute to additional siltation.



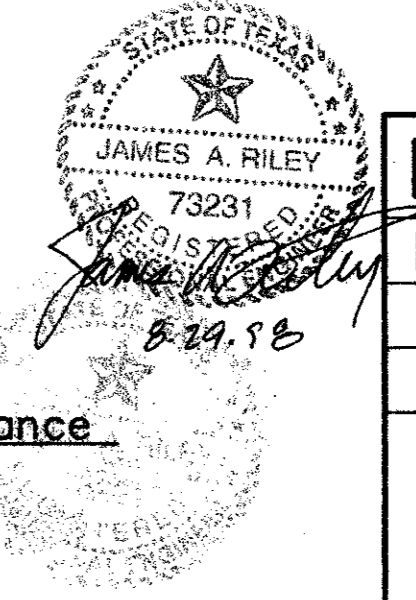
SILT FENCE DETAIL

- Notes:
- Stone shall be 3 to 5 inch diameter crushed rock or acceptable crushed Portland Cement Concrete.
 - When necessary, vehicles shall be cleaned to remove sediment prior to entrance onto a public roadway. When washing is required, it shall be done on an area stabilized with crushed stone with drainage flowing away from the street and the stabilized entrance. All sediment shall be prevented from entering any storm drain, ditch or watercourse using approved methods.
 - The entrance shall be maintained in a condition which will prevent tracking or flowing of sediment onto paved surfaces. This may require periodic top dressing with additional stone a conditions demand. All sediment spilled, dropped, washed or tracked onto paved surfaces, must be removed immediately.
 - The entrance must be properly graded or incorporate a drainage swale to prevent runoff from leaving the construction site.

LEGEND	
— 535 —	Existing Contour
— 35 —	Proposed Contour
→	Flow Arrow
—	Existing Curb
—	Proposed Curb
—	Sawcut
—	Existing Storm Sewer Line
—	Proposed Storm Sewer Line
—	Silt Fence



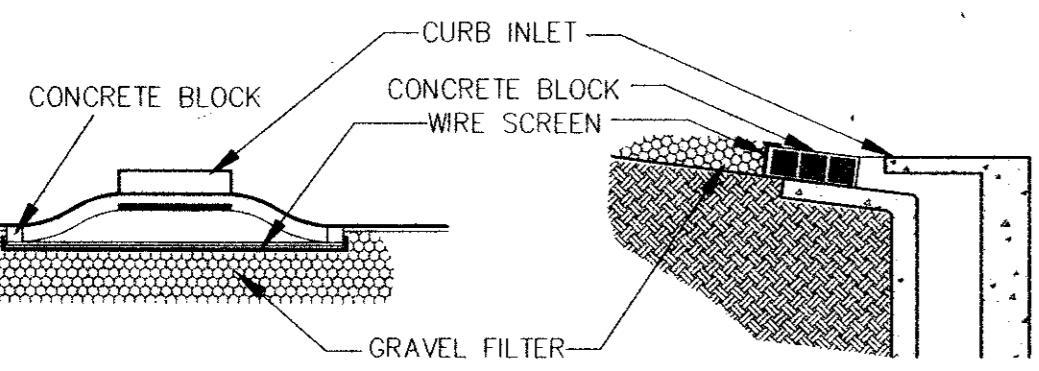
Stabilized Construction Entrance



EROSION CONTROL
PARKSIDE CORPORATE CENTER
TOWN OF ADDISON
DALLAS COUNTY, TEXAS

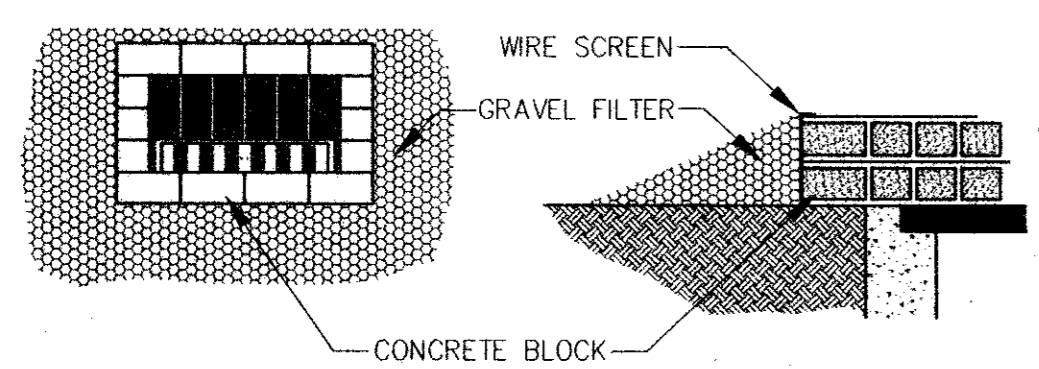
BROCKETTE · DAVIS · DRAKE, inc.
consulting engineers
 Civil & Structural Engineering · Surveying
 4144 North Central Expressway, Suite 1100, Dallas, Texas 75204
 (214) 824-3647, fax (214) 824-7064

DESIGN	DRAWN	DATE	SCALE	NOTES	FILE	NO.
JAR	DJR	7/98	1"=40'	C98271	BDD	C-9



CURB INLET PROTECTION

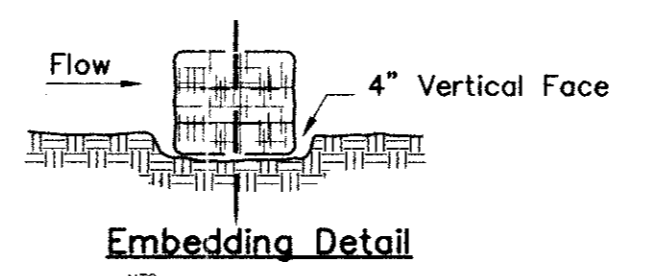
BLOCK AND GRAVEL PROTECTION
 Concrete blocks are to be placed on their sides in a single row around the perimeter of the inlet, with ends abutting. Opening in the blocks should face outward, not upward. Wire mesh shall then be placed over the outside face of the blocks covering the holes. Filter stone shall then be piled against the wire mesh to the top of the blocks with the base of the stone being a minimum of 18 inches from the blocks. Periodically, when the stone filter becomes clogged, the stone must be removed and cleaned in a proper manner or replaced with new stone and piled back against the wire mesh.



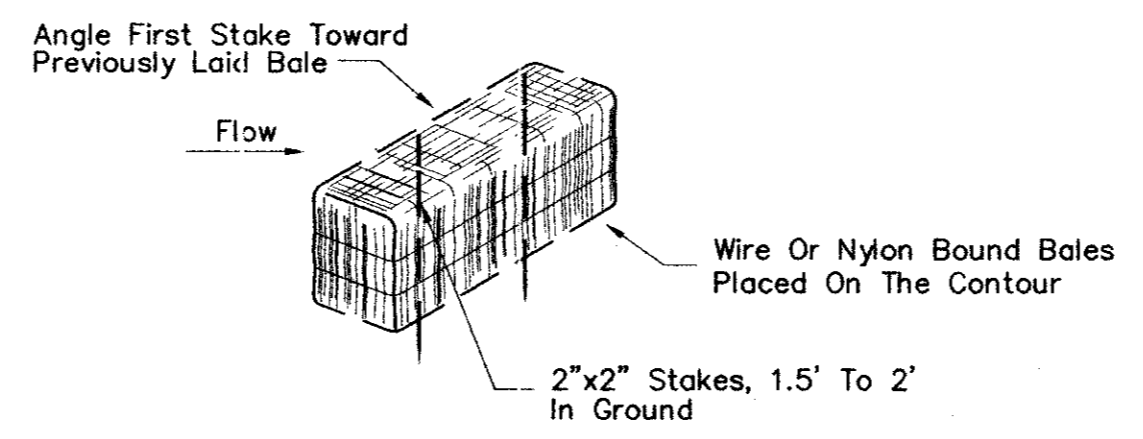
DROP INLET PROTECTION

CONSTRUCTION NOTES - HAYBALES

- Bales shall be placed in a row with ends tightly abutting the adjacent bales.
- Each bale shall be embedded in the soil a minimum of 4" where possible.
- Bales shall be securely anchored in place by stakes or re-bars driven through the bales. The first stake in each bale shall be angled toward previously laid bale to force bales together.
- Inspection shall be frequent and repair or replacement shall be made promptly as needed by contractor.
- On curb inlets, after paving has been completed place hay bales along throat of inlet to keep trash & silt from entering inlet.
- Bales shall be removed when they have served their usefulness so as not to block or impede storm flow or drainage.
- Accumulated silt shall be removed when it reaches a depth of six inches.



Embedding Detail



Anchoring Detail

TEMPORARY HAYBALE BARRIER DETAIL

BENCHMARK:
 SQUARE CUT ON END OF CURB LOCATED ON DRIVEWAY ON THE NORTH SIDE OF KELLER SPRINGS, APPROX. 500' WEST OF DALLAS PARKWAY ELEV = 626.24