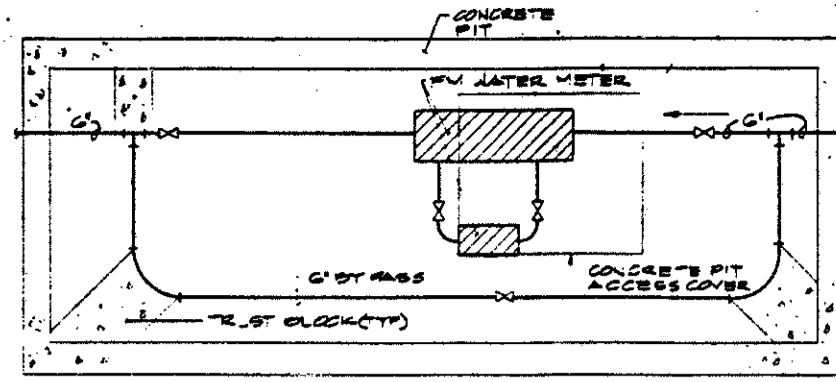
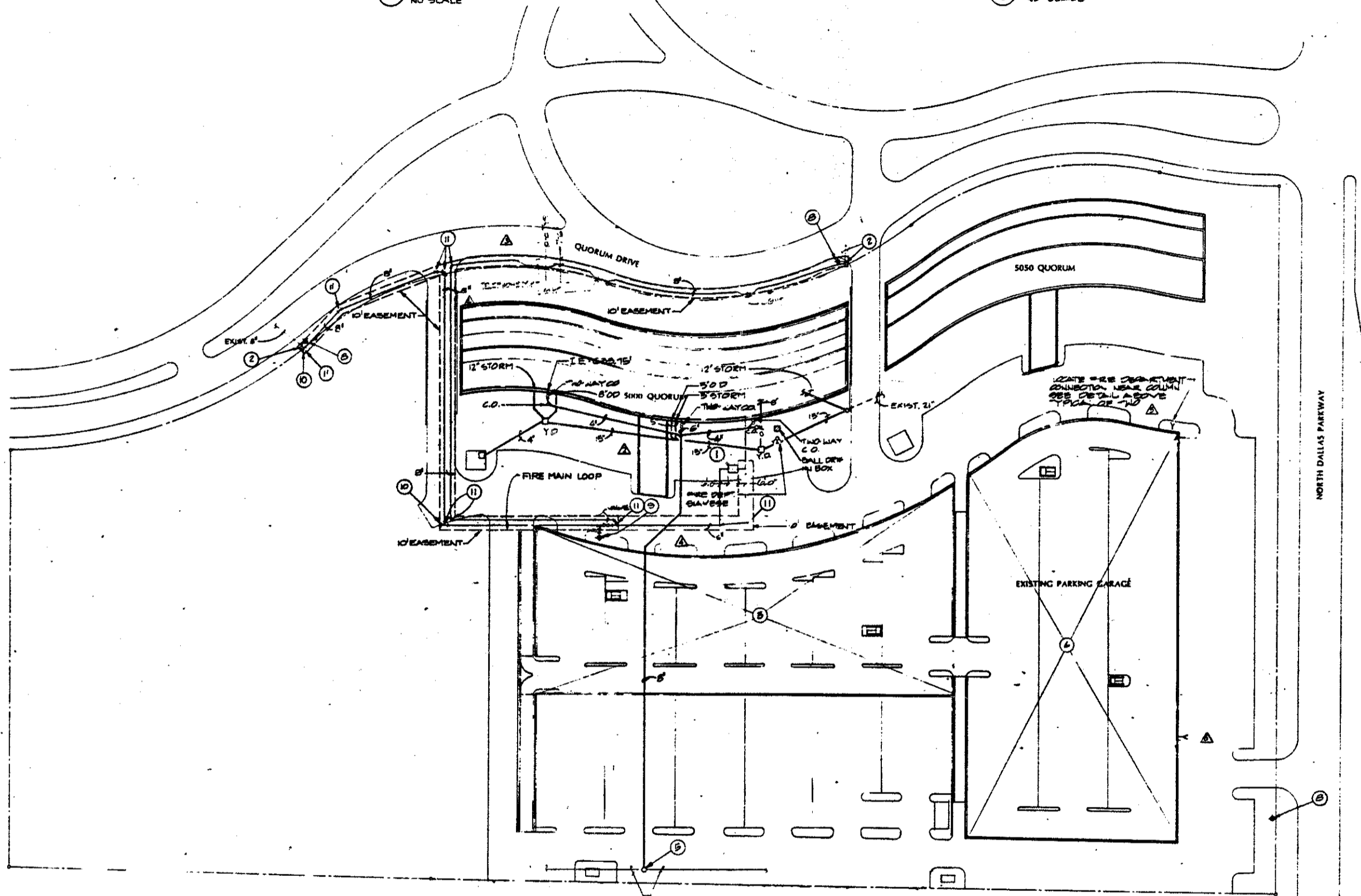


④ SIAMESE CONNECTION SUPPORT DETAIL  
NO SCALE

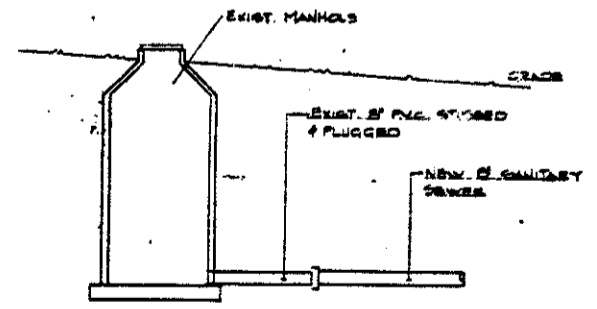


③ WATER METER PIT DETAIL  
NO SCALE



**NOTES:**

- ① 8" P.M. COMPOUND (FIBER DOMESTIC COLD WATER) METER WITH 6" BY PASS IN CONC. PIT, PER CITY OF ADDISON STANDARDS.
- ② EXIST. 8" C.W. W/8" C.W. TAP. VERIFY EXACT LOCATION, CORN NEW 8" C.W. AS SHOWN.
- ③ FOR NEW PARKING GARAGE FIRE PROTECTION REF: SHEETS B/S.2-1 & B/S.2-2.
- ④ FOR EXISTING PARKING GARAGE, CONTRACTOR SHALL PROVIDE A CIP STANDPIPE SYSTEM. THE SYSTEM SHALL CONSIST OF (2) SIAMESE CONNECTIONS AND (2) 1/2" FIRE DEPT. VALVES ON EACH LEVEL. LOCATE (1) SIAMESE CONNECTION BY QUORUM DRIVE ENTRANCE AND (1) AT DALLAS PARKWAY ENTRANCE WITHIN THE CONFINES OF THE EXISTING PARKING GARAGE. LOCATE (1) 1/2" FIRE DEPT. VALVE IN BOTH STAIRWAYS AT EACH LEVEL. THE THIRD VALVE SHALL BE LOCATED WHERE THE REMAINING AREA SHALL BE COVERED WITH 100' OF HOSE AND 30' OF SPRAY.
- ⑤ EXIST. SANITARY SEWER MANHOLE I.E. = 623.00'. CONNECT NEW 8" SANITARY INTO EXIST. 8" TAP AT I.E. = 628.42'.
- ⑥ FOR STORM SEWER REF: A/S.2-1
- ⑦ EXIST. 12" SANITARY SEWER.
- ⑧ EXIST. FIRE HYDRANT
- ⑨ NEW 8" FIRE HYDRANT VALVE.
- ⑩ NEW 8" TAP CAPPED FOR FUTURE USE.
- ⑪ PROVIDE THRUST BLOCK AS SHOWN.



② SANITARY SEWER CONNECTION  
NO SCALE

AS-BUILT  
A-2-8-

**SITE UTILITIES - MECHANICAL**



Quorum Partners Hellmuth, Obata & Kassabaum Inc. Elson & Tanner, Inc. Purdy-McGuire, Inc.	Owner Architect Structural Engineers Mech./Elec. Engineers	<h2 style="margin: 0;">QUORUM OFFICE BUILDING #2</h2>	  	Revisions: △ ISSUED FOR CONSTRUCTION SEPTEMBER 15, 1993 △ 11-4-93 △ 12-28-93 △ 4-9-94 △ 6-20-94	<table border="1" style="width: 100%; border-collapse: collapse;"> <tr> <td style="width: 50%;">SB</td> <td style="width: 50%;">T</td> </tr> <tr> <td style="width: 50%;">M-2</td> <td style="width: 50%;"> </td> </tr> </table>	SB	T	M-2		Job Number 1799407 AUGUST 1, 1993 Category <b>5.1-2</b>
SB	T									
M-2										