

Tap exist. 24" w/ 16" tapping valve, flanged, and tapping sleeve. DO NOT place tap within 2' of joint. Relocate as req'd. Provide valve box, extension & cover. PAY ITEM #5

Install approx. 525 L.F. ~ 16" P.303 Prestensioned Conc. Cylinder Pipe, ANWA C303, latest revision. Weld all joints for thrust restraint. Provide minimum 6' cover. See detail this sheet and Sht. G. PAY ITEM #4

Install 8" Flg. outlet, 20 L.F. ~ 8" P.U.C. pipe, 8" Gate Valve w/ box, fire hydrant. See Details Sht. 5, 6. PAY ITEM #9

Install 6" Flg. outlet 6" Gate Valve, w/ plug & thrust block. PAY ITEM #10

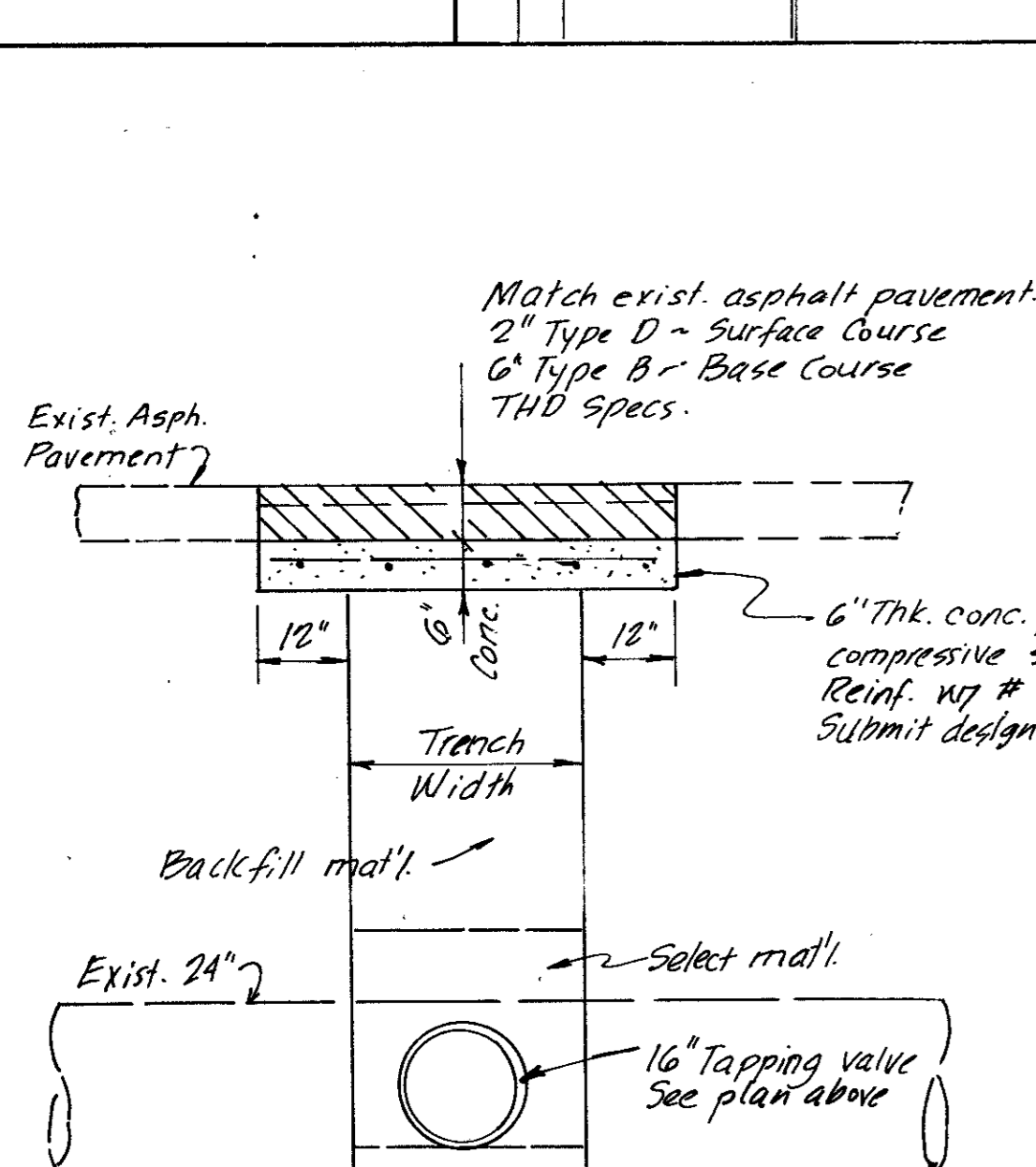
Match exist. grades Typ (Full Height curb)

Sawcut & remove exist. conc. curb & gutter, asph. pvm't. Place conc. drive, as shown, w/ 3000 psi concrete @ 28 days. Replace asphalt pavement as req'd. (See DETAIL this sheet) PAY ITEM #8
* Saw & remove as minimum as req'd. to install tapping valve.

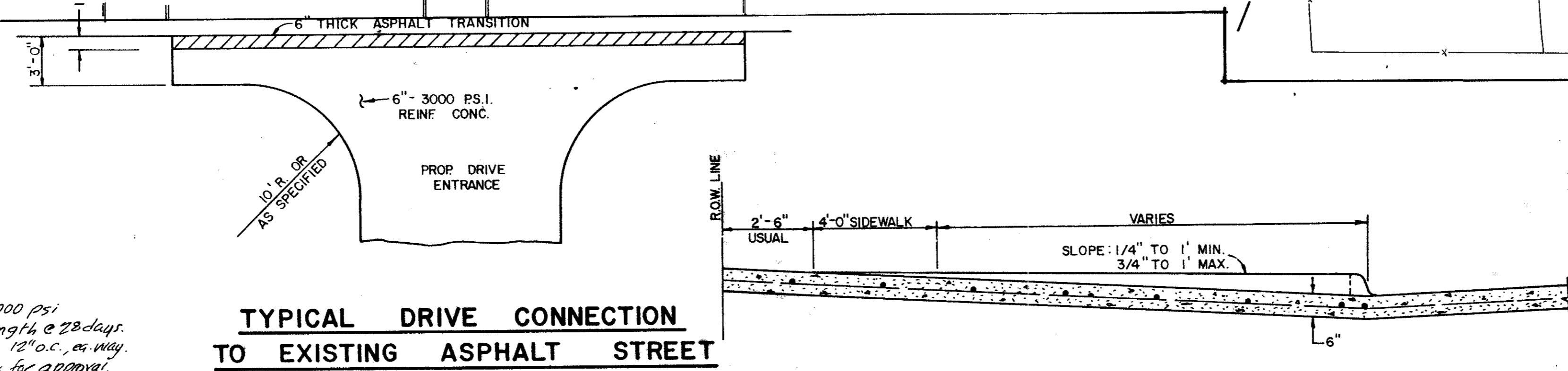
Install 2-2" Taps incl. corp. stops, 2" piping for testing pipe. NOT A SEPARATE PAY ITEM. Include in Pay Item #1

NOTE: ALL VALVES & FITTINGS SHALL BE FLANGED

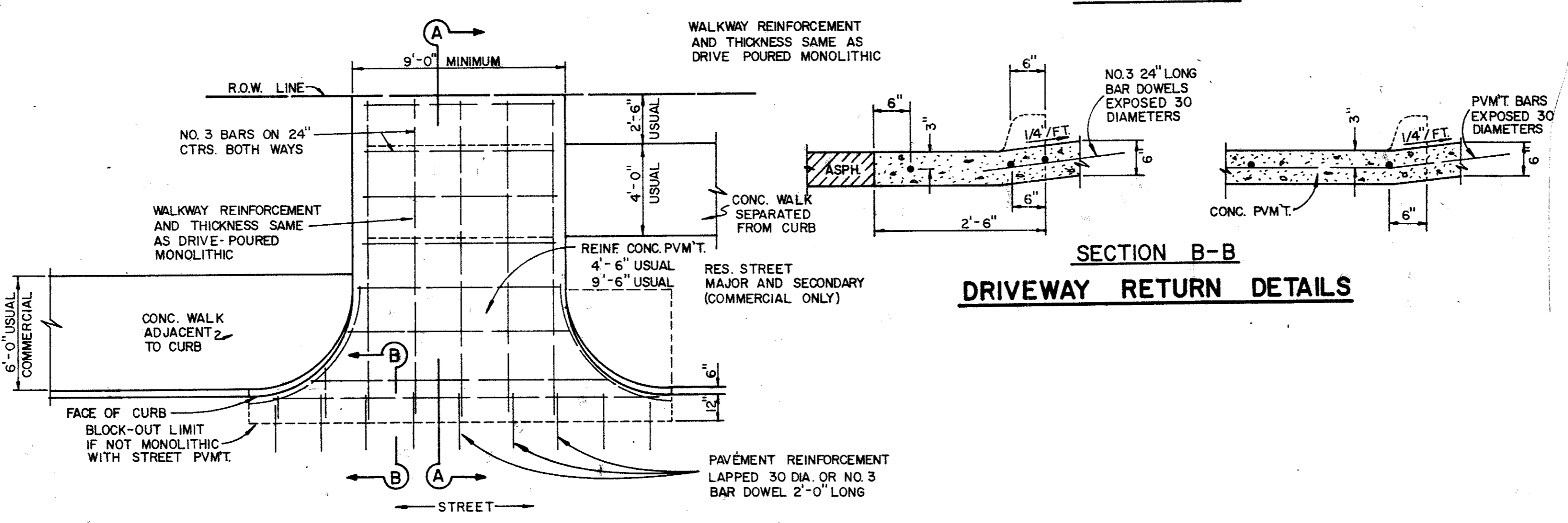
For Cont., see Sht. 2



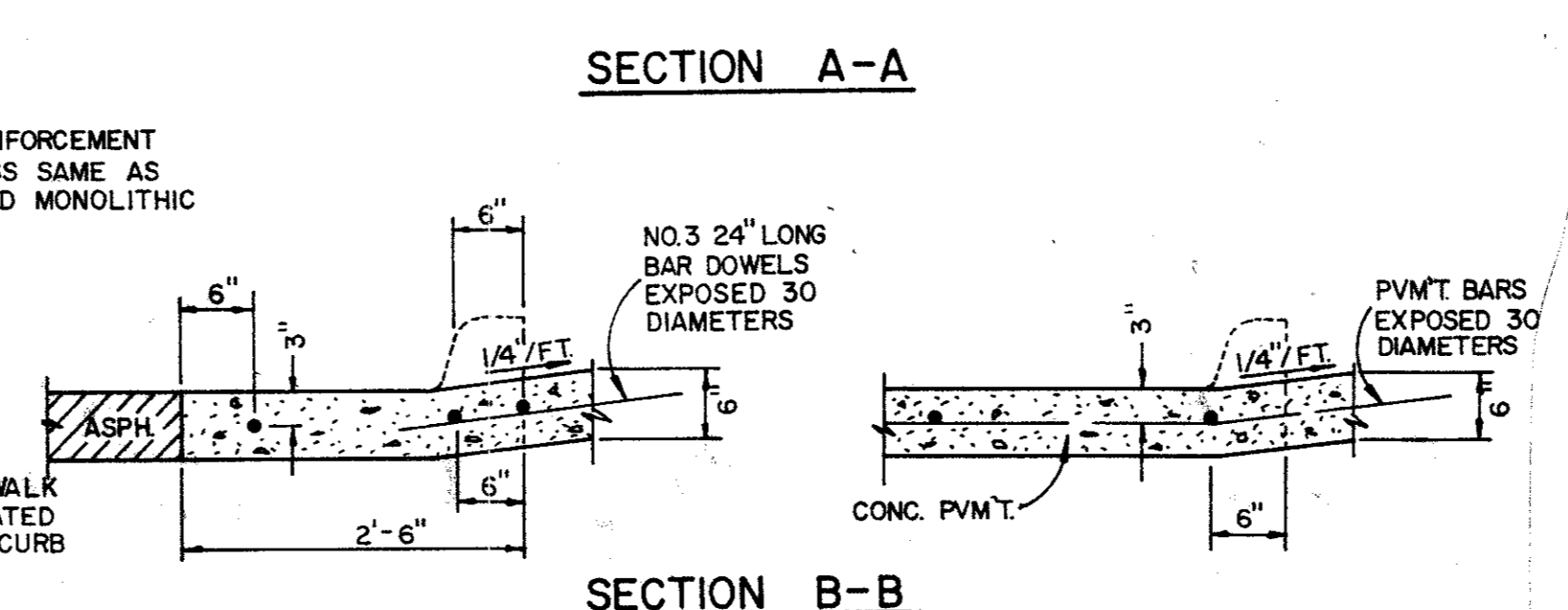
ASPHALT PAVEMENT REPLACEMENT DETAIL
NO SCALE



TYPICAL DRIVE CONNECTION TO EXISTING ASPHALT STREET



DRIVEWAY RETURN TO STREET



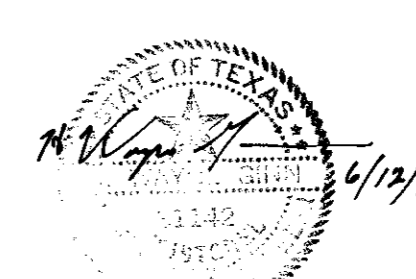
SECTION A-A
SECTION B-B
DRIVEWAY RETURN DETAILS

SUGGESTED SEQUENCE OF CONSTRUCTION:

1. Construct 16" line from Addison Rd. to butterfly valve near tank.
 2. Construct 24" line from Mildred St. tie-in to butterfly valve near tank.
 3. Test and chlorinate both 16" and 24" line. Take samples.
 4. Construct, test and chlorinate 24" ductile line, between butterfly valves in vicinity of elevated tank; including drilled shafts for use in thrust restraint.
 5. Make tie in to 24" pipe at elev. tank and 16"/24" lines also.
- ELEVATED TANK CAN NOT BE OUT OF SERVICE LONGER THAN 8 HOURS UNLESS OTHERWISE AUTHORIZED IN WRITING BY OWNER/ENGINEER.

GENERAL NOTES:

1. Contractor shall keep tank electrical and telemetry in-service at all times. If required, telemetry shall be re-routed as needed, along new 24" line relocation. Include in PAY ITEM #13.
2. Thrust restraint for pipes shall be welded joints, concrete thrust blocks, or combination thereof, to resist thrust as shown.
3. Upon discharging "super chlorinated" water effluent after testing, contractor shall treat effluent in accordance with ANWA Standards. Amount of treatment dependent upon dilution of chlorine used in testing/chlorination procedures.
4. TESTING of water line NOT A SEPARATE PAY ITEM - incidental to const.



Revision		By		Date	
TOWN OF ADDISON DALLAS COUNTY, TEXAS 24" WATER LINE RELOCATION 16" W. L.					
SITE PLAN - DETAILS					
GINN, INC.					
Consulting Engineers Dallas, Texas					
Designed - CF	Drawn - CF	Date - JUNE 1980	Job No. - 90442		
Approved - WG	Checked - WG	Scale - AS SHOWN	Sheet 3	of 6	