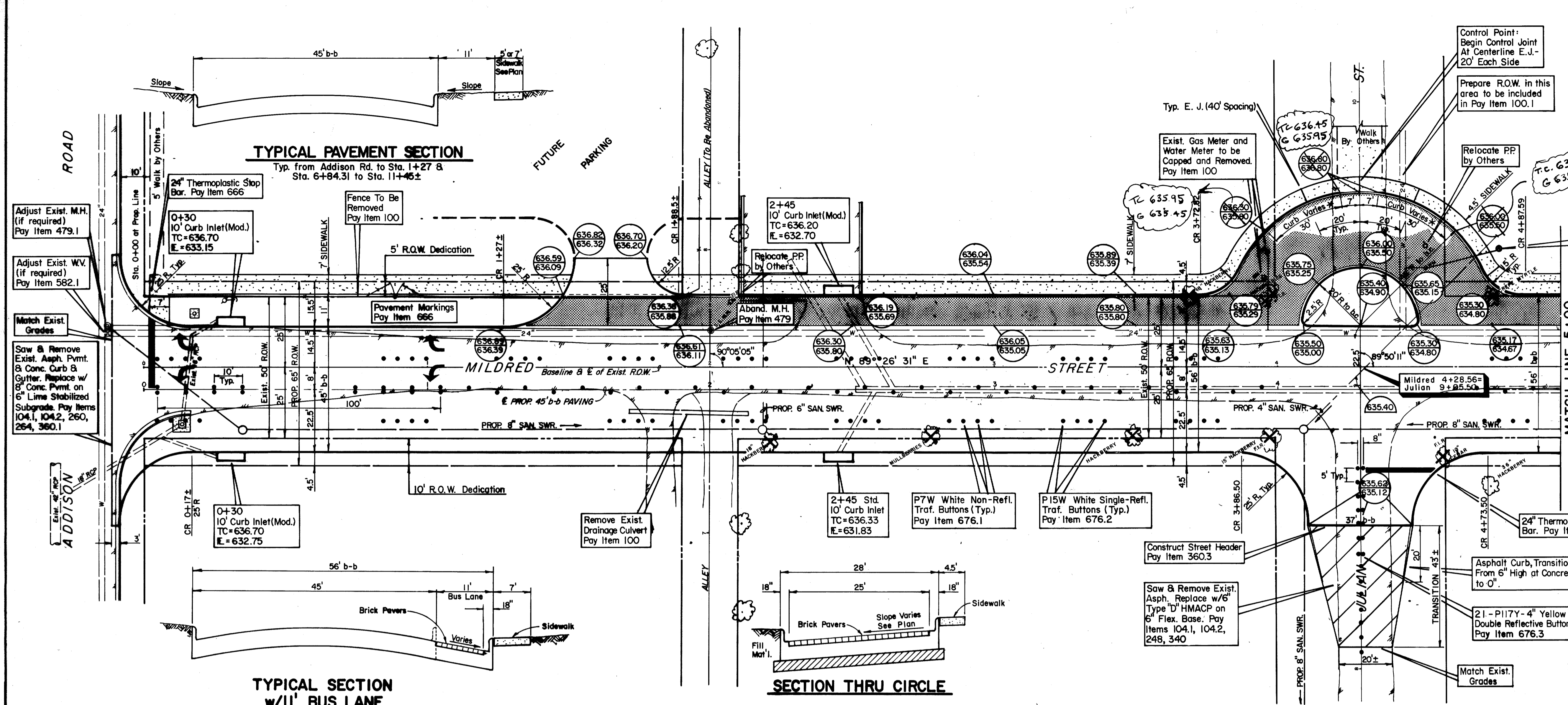


- NOTES: (Typical All Sheets)
1. For Details of Sanitary Sewer Lines, See Sht. S1 thru S10.
 2. For Details of Storm Sewer Lines, See Sht. M8 thru M12.
 3. For Typical Pavement Section Details, See Sht. M4 thru M6.
 4. Provide Barrier Free Ramps At Curbs & Drives. See Sht. M7.
 5. Control Joints & Expansion Joints Shall Be "RADIAL", Not Perpendicular To Curb, In Area Of Circle.

As per field change



Curb height varies from full 6\"/>

Relocate Exist. W.M. Extend Service w/3/4\"/>

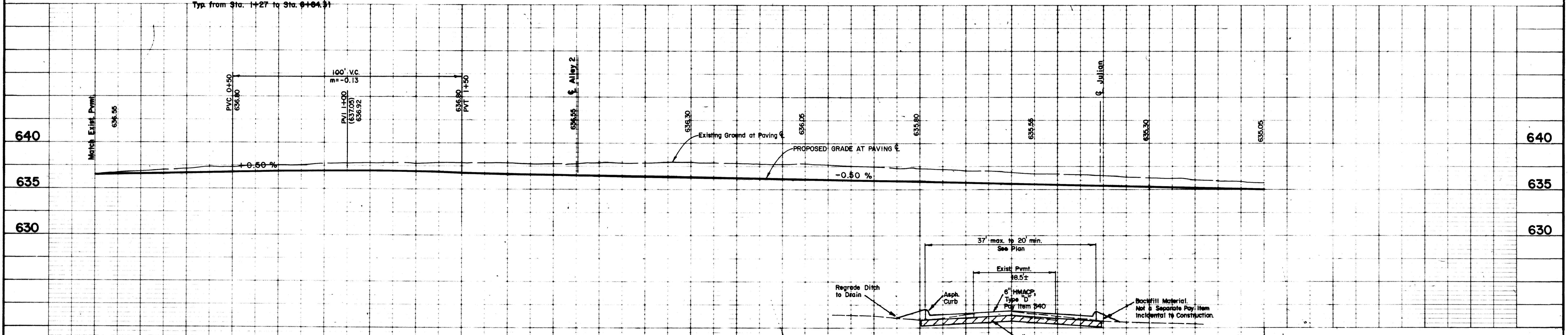
BEGINNING TO STA. 6+50

NOTE: 8\"/>

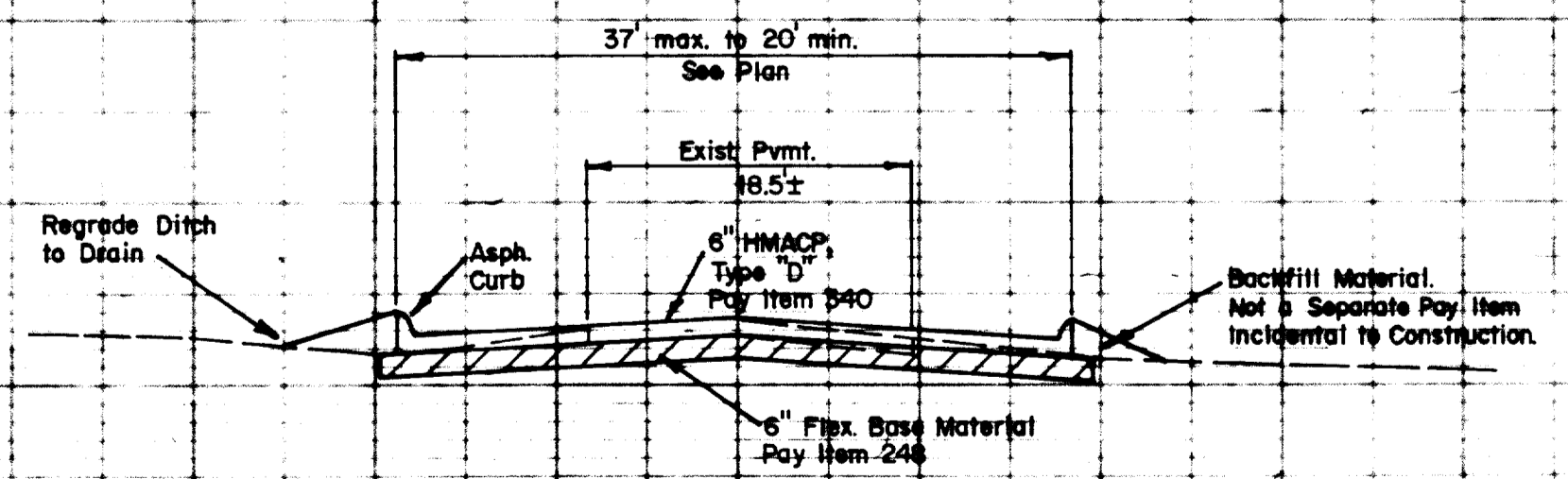
TYPICAL SECTION w/11' BUS LANE

Typ. from Sta. 1+27 to Sta. 4+43.1

SECTION THRU CIRCLE



TYPICAL SECTION - JULIAN STREET



No.	Revision	By	Date
TOWN OF ADDISON DALLAS COUNTY, TEXAS MILDRED STREET IMPROVEMENTS PAVING STA. 0+00 TO STA. 5+00 GINN, INC. Consulting Engineers Dallas, Texas			
Designed - TEC	Drawn - TEC	Date - May, 1990	Job No. - 90439
Approved - HWG	Checked - GF	Scale - 1" = 20'H/1" = 5'V	Sheet M1 of 12

