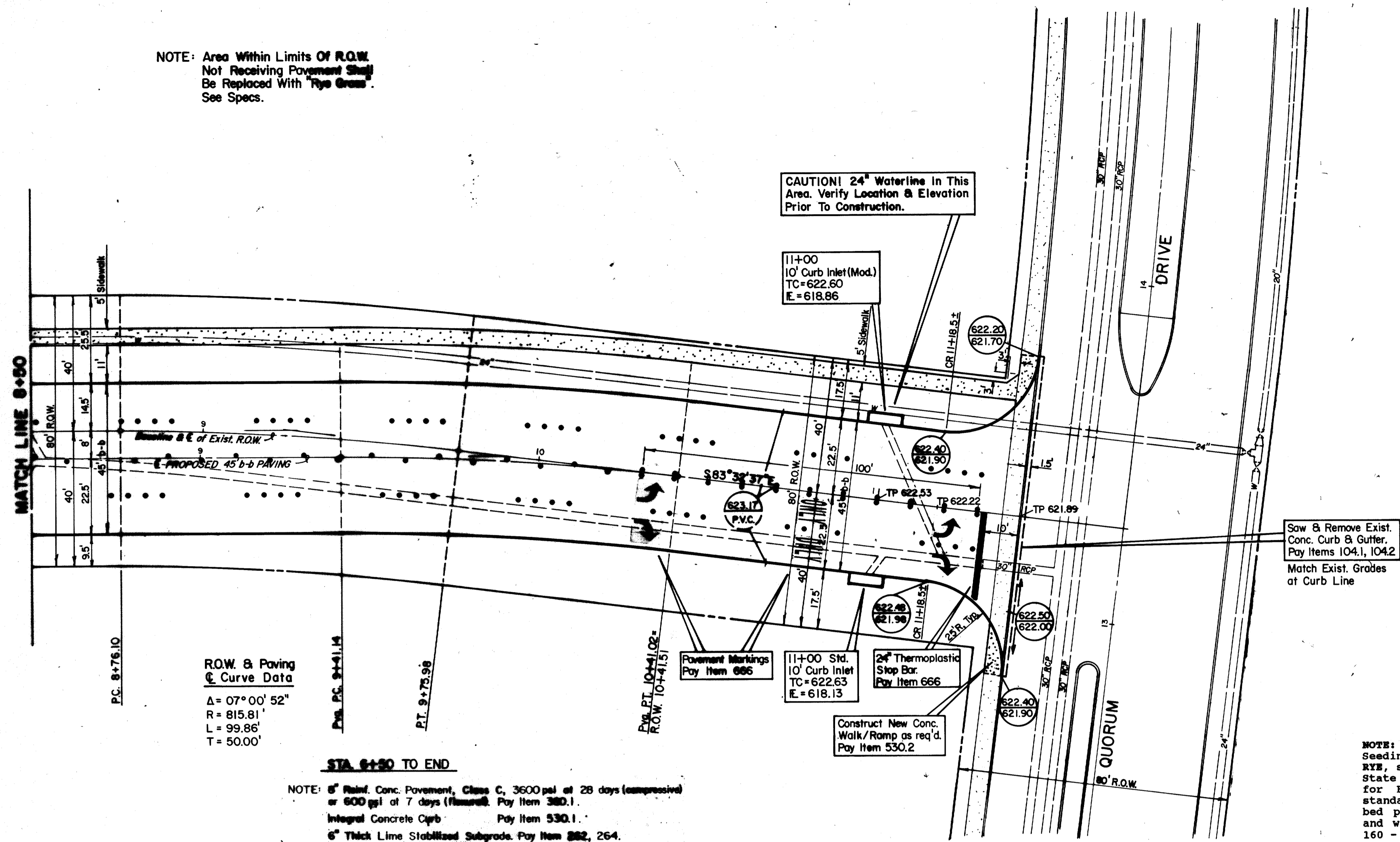


NOTE: Area Within Limits OF R.O.W.  
Not Receiving Pavement Shall  
Be Replaced With **Tree Grass**.  
See Specs.



**R.O.W. & Paving  
Curve Data**  
 $\Delta = 07^\circ 00' 52''$   
 $R = 815.81'$   
 $L = 99.86'$   
 $T = 50.00'$

**STA. 8+50 TO END**

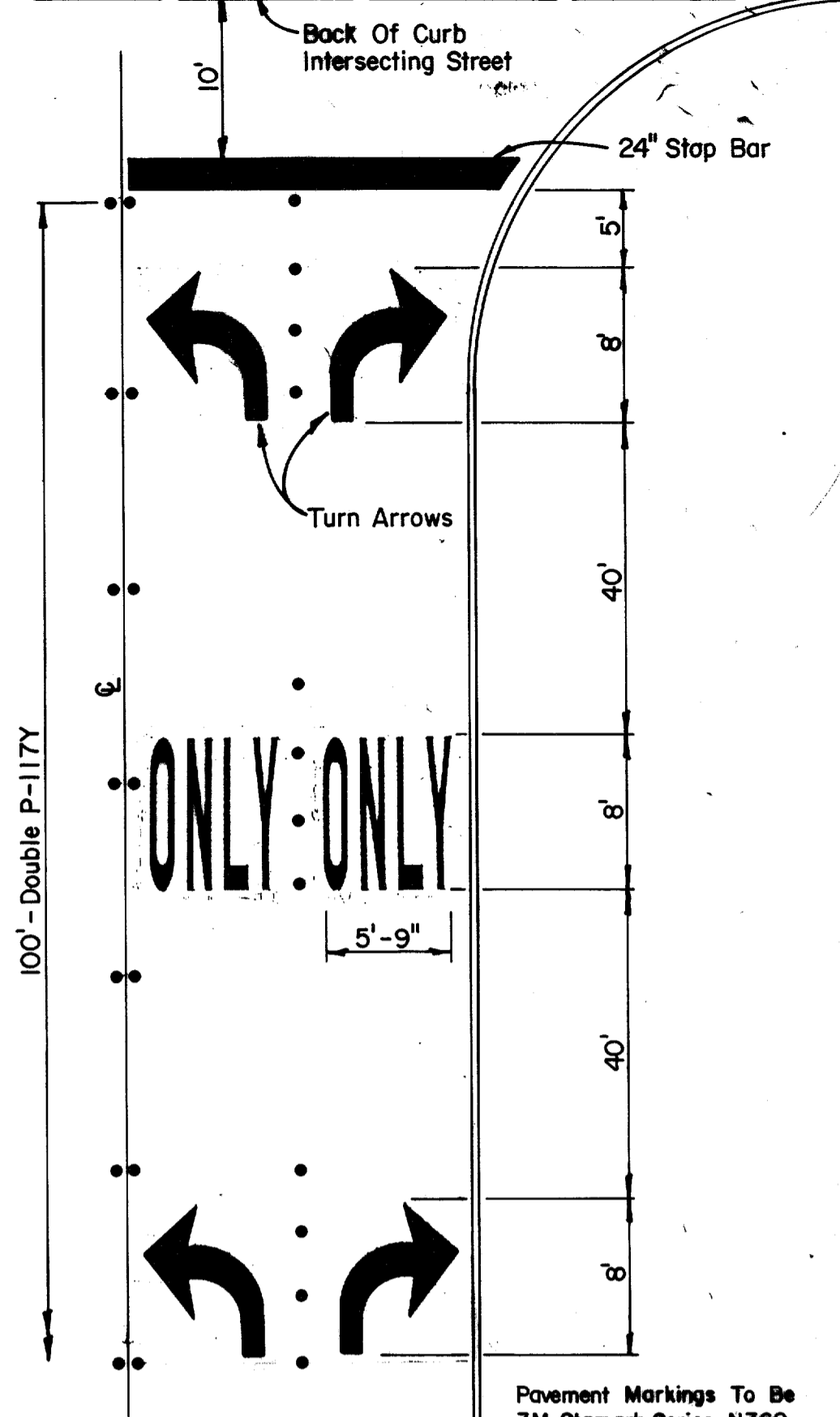
NOTE: 6" Rein. Conc. Pavement, Class C, 3600 psi at 28 days (compressive)  
or 600 psi at 7 days (flexural). Pay Item 380.1.  
Integral Concrete Curb Pay Item 530.1.  
6" Thick Lime Stabilized Subgrade. Pay Item 262, 264.

CAUTION! 24" Waterline in This  
Area. Verify Location & Elevation  
Prior To Construction.

11+00  
10' Curb Inlet (Mod.)  
TC=622.60  
E=618.66

Saw & Remove Exist.  
Conc. Curb & Gutter.  
Pay Items 104.1, 104.2  
Match Exist. Grades  
at Curb Line

Construct New Conc.  
Walk/Ramp as req'd.  
Pay Item 530.2

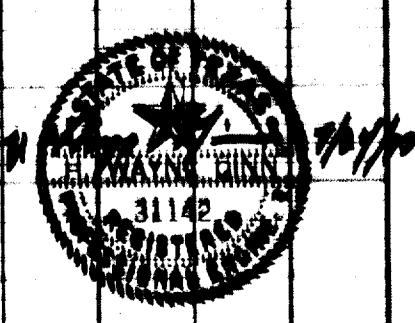
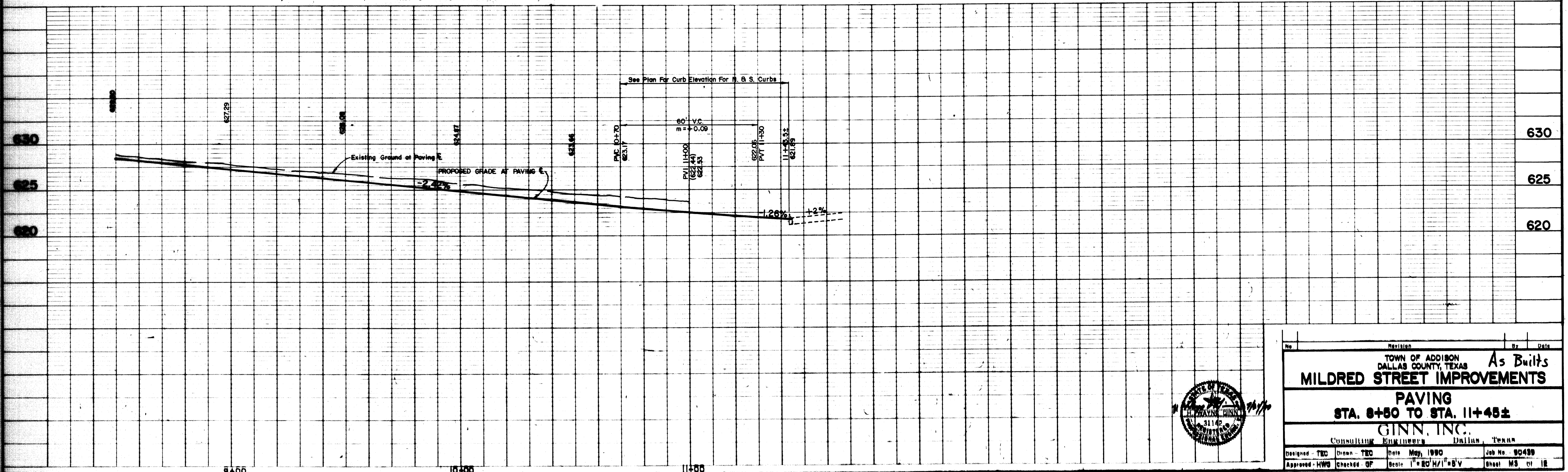


**PAVEMENT MARKING DETAIL**  
No Scale Pay Item 666

Pavement Markings To Be  
3M Stomark Series N360  
& Series SMS-N360.

B.M. "□" on edge of Conc. Apron at  
E of Doorway of Water Tower.  
Elev. 636.66

NOTE:  
Seeding for Temporary Erosion Control, ANNUAL  
RTB, shall meet all the requirements of Texas  
State Highway Department, Item 164 - Seeding  
for Erosion Control, and the Town of Addison  
standards. Payment for this item, including  
bed preparation, fertilizer, mulch, seeding  
and watering shall be included in PAY ITEM  
160 - FURNISHING AND PLACING TOPSOIL.



No.	Revision	By	Date
<b>TOWN OF ADDISON DALLAS COUNTY, TEXAS</b> <b>MILDRED STREET IMPROVEMENTS</b> <b>As Built</b> <b>PAVING</b> <b>STA. 8+50 TO STA. 11+45±</b> <b>GINN, INC.</b> CONSULTING ENGINEERS Dallas, Texas			
Designed - TEC	Drawn - TEC	Date May, 1990	Job No. 80490
Approved - HWS	Checked - OF	Scale 1" = 20' H/1" = 8' V	Sheet M3 of 18