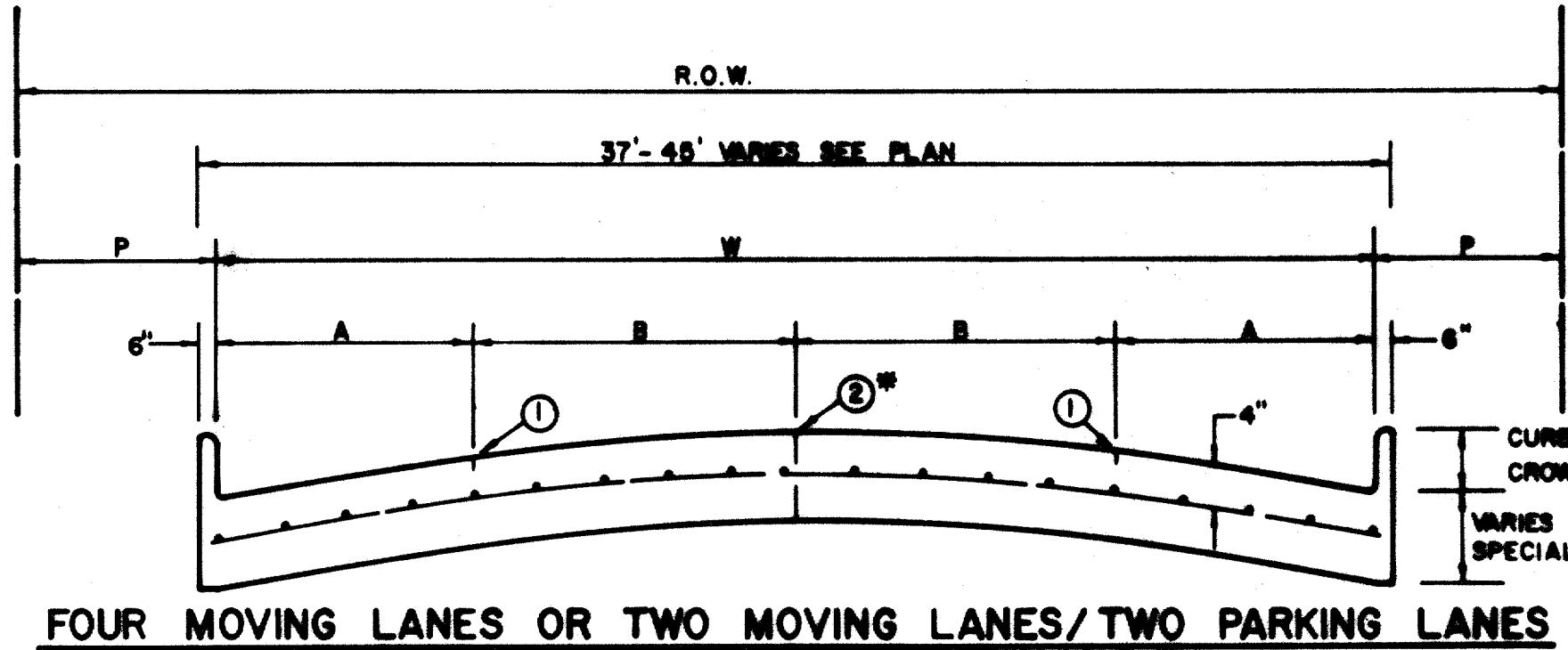


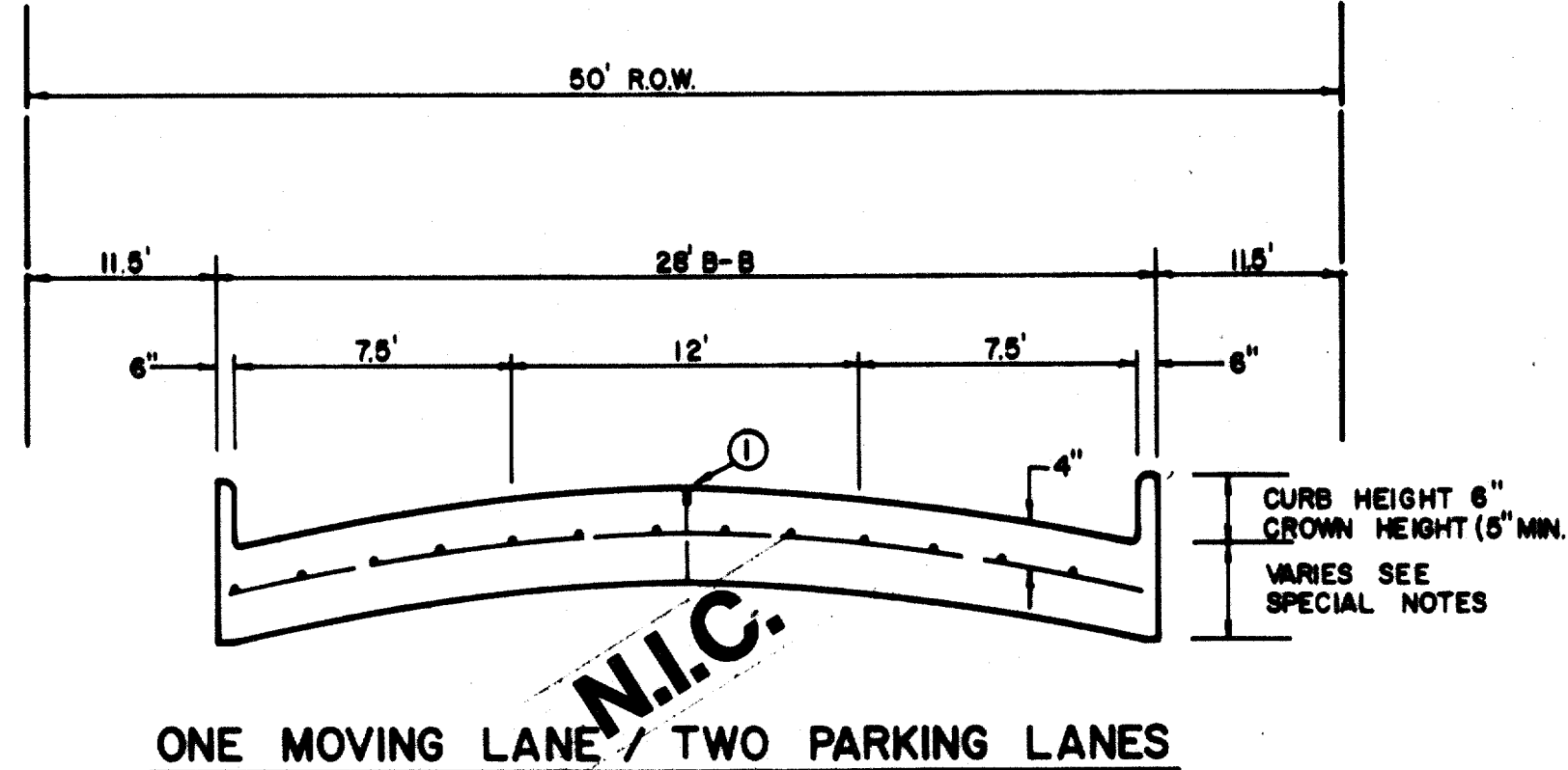
GENERAL NOTES

- A. GENERAL PAVEMENT THICKNESS FOR STREETS SHALL BE AS SPECIFIED BELOW IN SPECIAL NOTES.
- B. STANDARD SPECIFICATIONS REINFORCED CONCRETE PAVEMENTS
 1. ALL CURBS SHALL BE PLACED INTERNAL WITH PAVEMENT.
 2. CURBS SHALL MEET THE SAME COMPRESSIVE STRENGTH AS SPECIFIED FOR THE CONCRETE PAVEMENT.
 3. DETAIL AND ARRANGEMENT OF JOINTS, ALL TYPES, SHALL BE AS SHOWN ON THE STANDARD CONSTRUCTION DETAILS, OR AS APPROVED BY ENGINEER.
 4. BAR LAPS SHALL BE 30 DIAMETERS.
- C. SUBGRADE UNDER ALL PAVEMENT SHALL BE 6 INCHES THICK AND SHALL BE STABILIZED WITH 6 PERCENT BY WEIGHT OF BINDER LINE (27 LBS/S.Y.) AND CONSTRUCTED TO A BENSITY NOT LESS THAN 95 PERCENT AS DETERMINED BY A.A.S.T.M. 99. ENGINEER'S TESTS MAY BE SUBMITTED TO THE ENGINEER FOR APPROVAL TO SAVE AMOUNT OF LINE REQUIRED.
- D. BAR CHAIRS OR AN APPROVED SUPPORTING DEVICE SHALL BE FURNISHED.



STREET TYPE	STREET WIDTH (W)	A	B	R.O.W. WIDTH	P
COLLECTOR	36'	8'	10'	60'	11.5'
COLLECTOR	40'	8' OR 10'	10' OR 12'	60'	9.5'
COLLECTOR	44'	11'	11'	65'	10.0'

* FULL WIDTH PAVEMENT OF 36' WIDTH STREETS IS ALLOWED WHERE APPROVED BY THE ENGINEER.



REINFORCED CONCRETE PAVEMENT

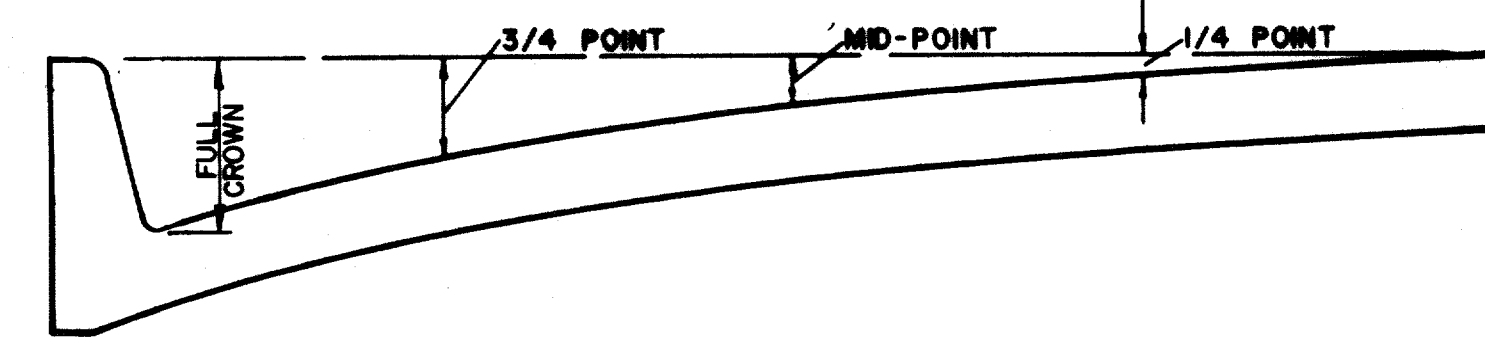
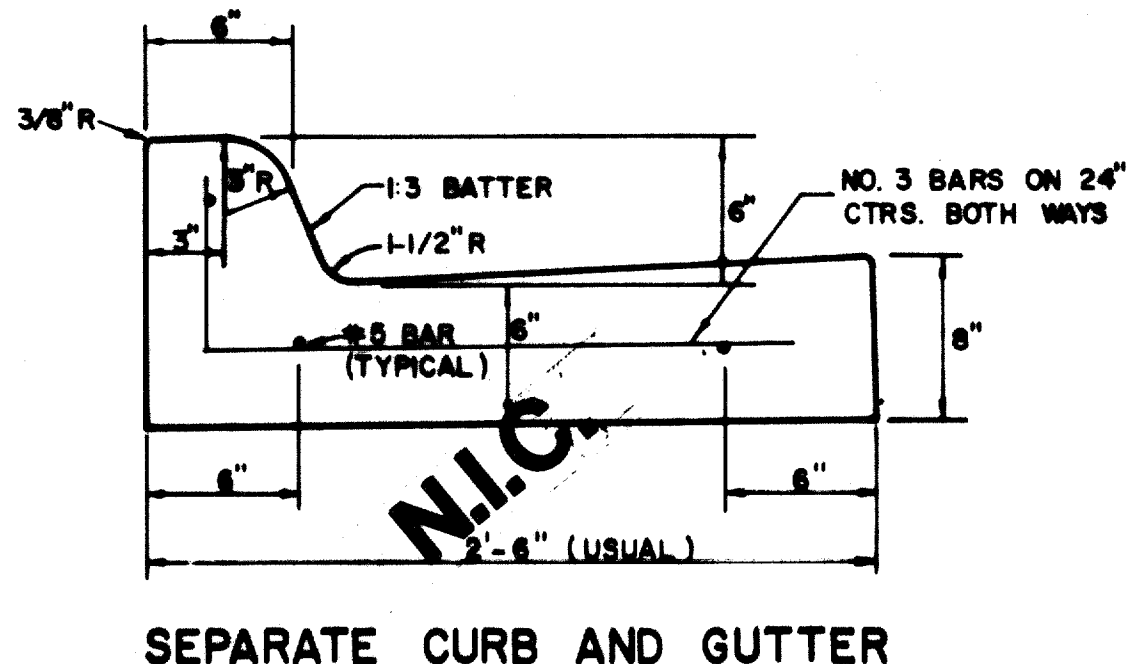
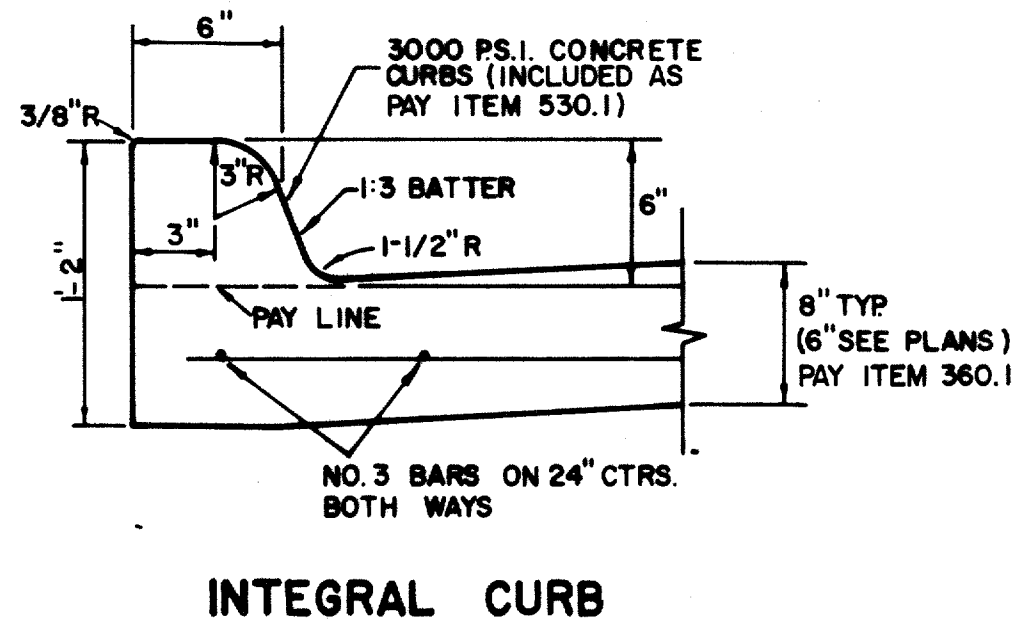
ALL REINFORCING BARS SHALL BE NO. 3 TRANSVERSE BARS TO BE SPACED ON 2'-0" CENTERS; LONGITUDINAL BARS TO BE SPACED ON 2'-0" EXCEPT WHERE NOTED.

UNDIVIDED STREETS—PROVIDE 4" DBL.—REF YELLOW & BUTTON P-117-Y PATTERNS TO BE ESTABLISHED BY ENGINEER. SEE DETAIL SHEET.

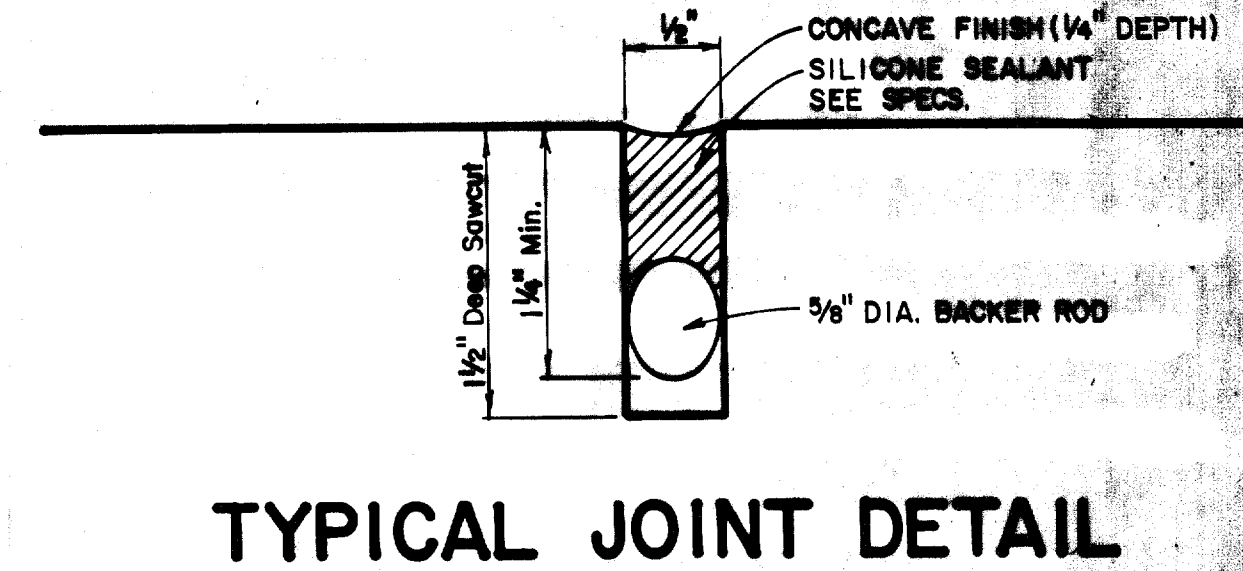
① SAWED LONGITUDINAL DUMMY JOINT.

② CONSTRUCTION JOINT (FULL WIDTH PAVMT IS ALLOWED WHERE APPROVED BY ENGINEER).

③ FINISH SHALL BE TRANSVERSE WITH TRAFFIC LANES AND SHALL BE STEEL TINED BROOM FINISH.



ROADWAY WIDTH (W)	TOTAL CROWN HEIGHT	3/4 POINT	MD-POINT	1/4 POINT
26'	6"	3 - 3/8"	1 - 1/2"	3/8"
36'	6"	3 - 3/8"	1 - 1/2"	3/8"
44'	6"	3 - 3/8"	1 - 1/2"	3/8"
48'	6"	3 - 3/8"	1 - 1/2"	3/8"



STANDARD CONSTRUCTION DETAILS PAVING

STREET CROWNS & JOINTS

GINN, INC.

Consulting Engineers Dallas, Texas

Designed - Drawn - Date - June, 1990 Job No. - 90439

Approved - Checked - Issue - Sheet M4 of 12

