

NOTE: Removal and replacement of existing drives or alley pavement due to construction of Sanitary Sewer line is not a separate pay item. Include in applicable linear foot cost of pipe.

CAUTION! (Typical) Exist. Sanitary Sewer Laterals In This Area. Verify Location and Size Prior To Beginning Construction.

As built
MOVED MH #7
OVER EXISTING LINE

As built
MOVE MH #5
OVER EXISTING LINE

As built
MOVE MH #5B
TO CONNECT LINE
S-5 TO EXISTING
8" LINE IN ALLEY

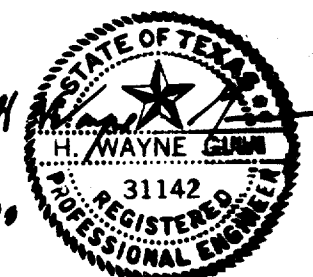
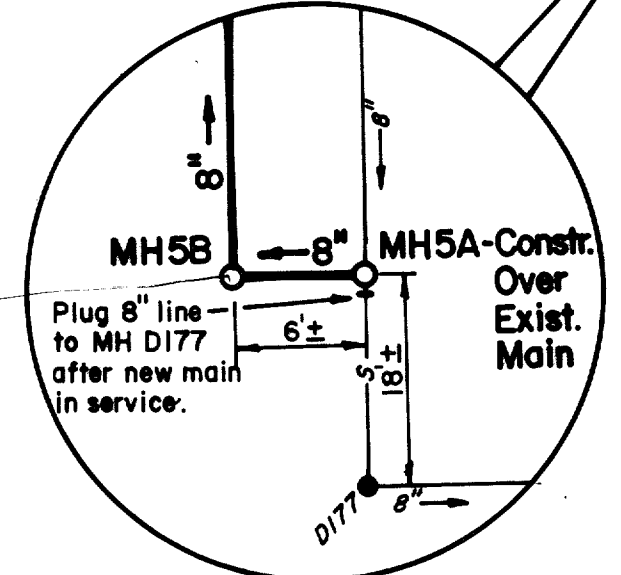
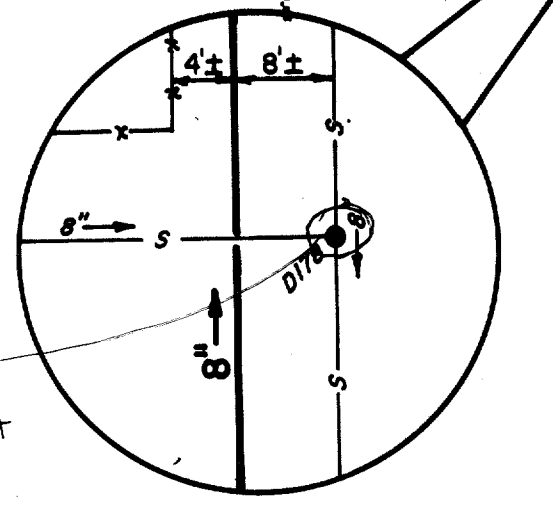
As built
MOVE MH 5B

As built
MOVE MH
5B TO NEW
LOCATION

As built
MOVE MH 5B
TO NEW LOCATION

LEGEND

	Exist. San. Sewer
	Exist. Water
	Exist. Gas
	Exist. Manhole
	Exist. Valve
	PROPOSED SEWER
	PROPOSED M.H.



TOWN OF ADDISON
DALLAS COUNTY, TEXAS

As Built's
SANITARY SEWER IMPROVEMENTS

PLAN

GINN, INC.
Consulting Engineers Dallas, Texas

Designed - GF Drawn - TEC Date - June, 1990 Job No. - 90443
Approved - HWG Checked - GF Scale - 1"=40' Sheet S2 of 10