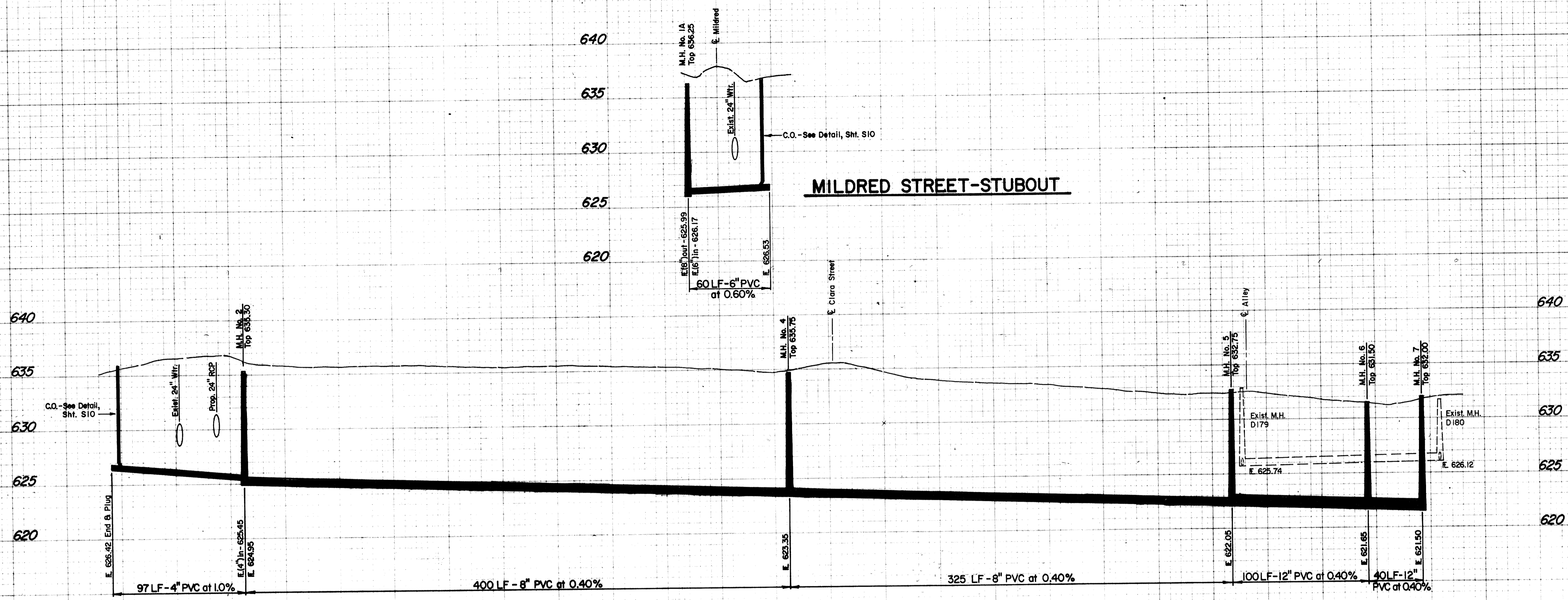


FINAL SURVEY DATE

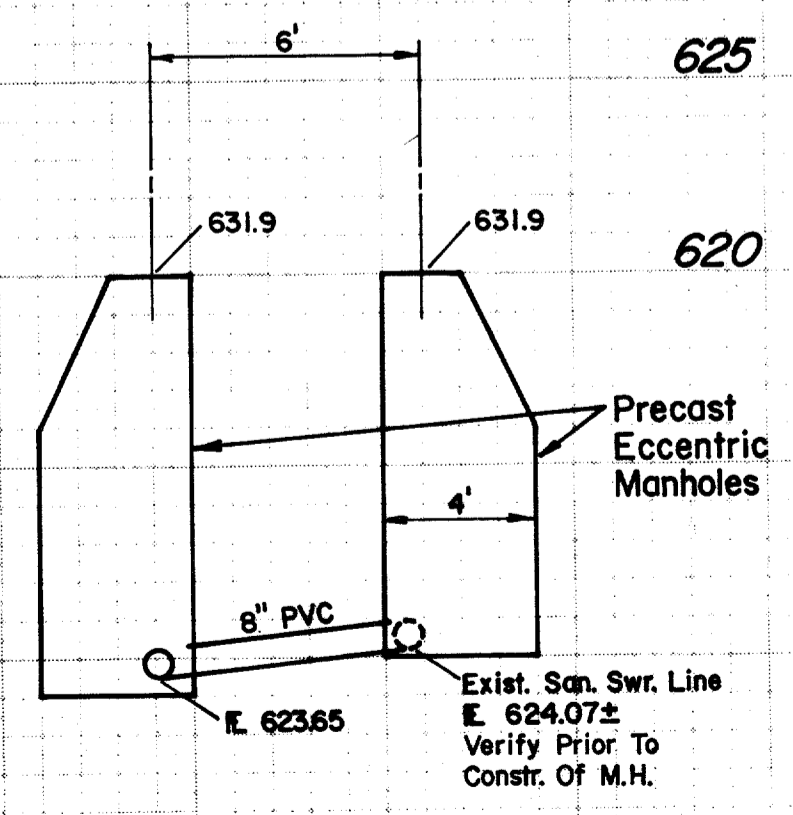
ORIGINAL SURVEY DATE



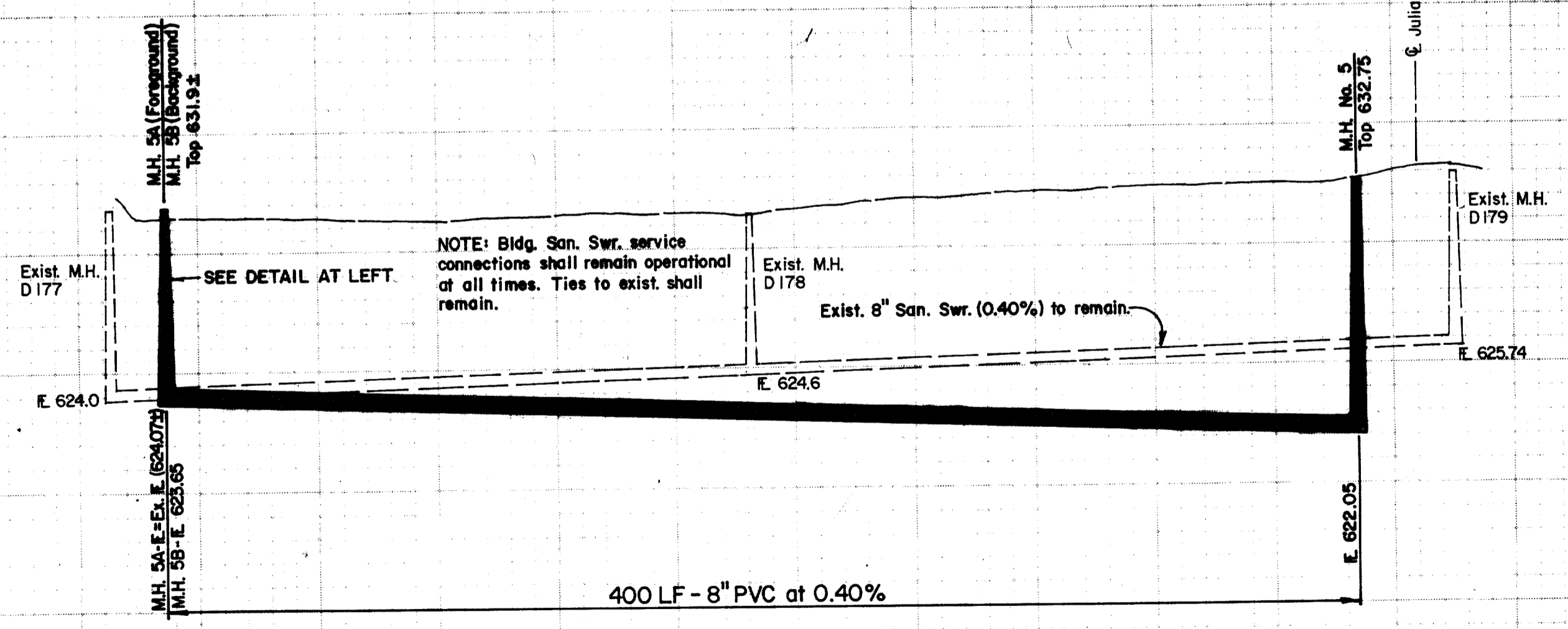
MILDRED STREET-STUBOUT

JULIAN STREET

ALLEY



DETAIL
No Scale



NOTE: Bldg. San. Swr. service connections shall remain operational at all times. Ties to exist. shall remain.
Exist. 8" San. Swr. (0.40%) to remain.



No.	Revision	By	Date
TOWN OF ADDISON DALLAS COUNTY, TEXAS			
SANITARY SEWER IMPROVEMENTS			
PROFILES			
JULIAN STREET - ALLEY			
GINN, INC.			
Consulting Engineers Dallas, Texas			
Designed - GF	Drawn - TEC	Date - June, 1990	Job No. - 90443
Approved - HWG	Checked - GF	Scale - 1" = 40' H/1" = 5' V	Sheet 55 of 10