

**LEGEND**

	Exist. San. Sewer
	Exist. Water
	Exist. Gas
	Exist. Manhole
	Exist. Valve
	PROPOSED SEWER
	PROPOSED M.H.

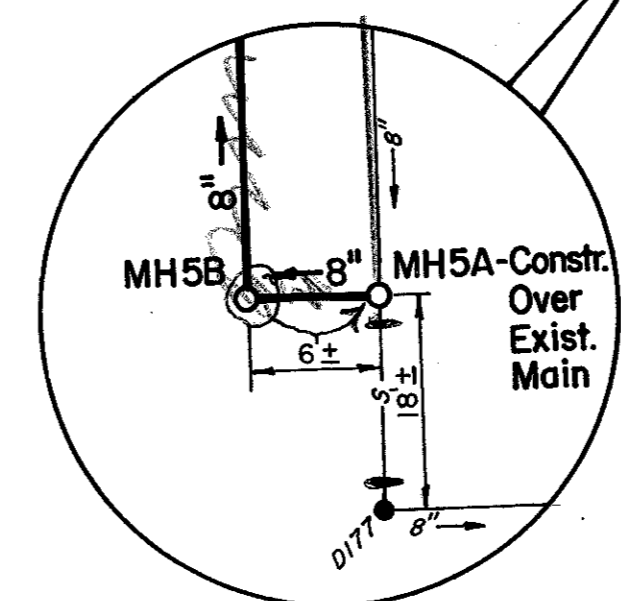
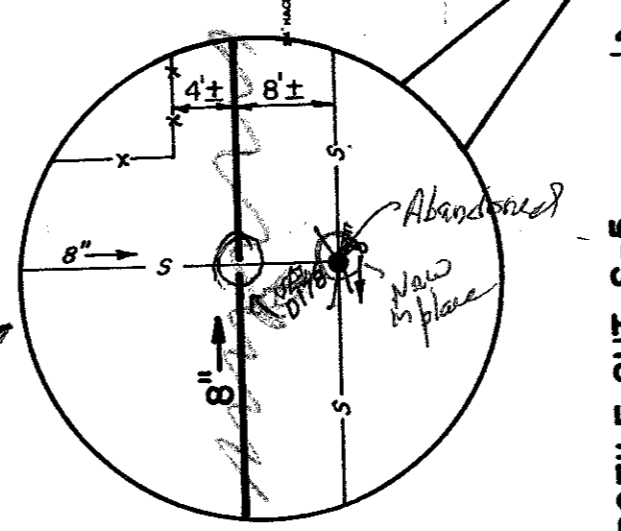
TOWN OF ADDISON  
DALLAS COUNTY, TEXAS

**SANITARY SEWER IMPROVEMENTS**

**PLAN**

**GINN, INC.**  
Consulting Engineers Dallas, Texas

Designed - GF	Drawn - TEC	Date - June, 1990	Job No. - 90443
Approved - HWG	Checked - GF	Scale - 1"=40'	Sheet 52 of



Exist. M.H.  
D183  
Top 636.69  
Elev. 627.24  
Elev. 630.96  
Elev. 627.24

Exist. M.H.  
D184  
Top 636.60  
Elev. 627.90

Exist. M.H. Abandoned  
D178  
Top 631.44  
Elev. 624.60  
New in place of Abandoned

Exist. M.H.  
D177  
Top 631.83  
Elev. 624.00

Exist. M.H.  
D18  
Top 631.8  
Elev. 627.08

Exist. M.H.  
D180  
Top 631.67  
Elev. 626.12

Exist. M.H.  
D179  
Top 632.92  
Elev. 625.74

Line from N 1/2 @ 1' higher than E-W line

Abandoned  
New in place

Abandoned

Abandoned

SEE PROFILE SHT. S-5

SEE PROFILE SHT. S-5

SEE PLAN/PROFILE SHT. S-4

SEE PLAN/PROFILE SHT. S-3

SEE PLAN/PROFILE SHT. S-6

SEE PROFILE SHT. S-5

MH5B

MH5A

MH2

MH3

MH4

MH5

MH6

MH7

M.H. D176

M.H. D170

M.H. D170

M.H. D170

M.H. D170

M.H. D170

M.H. D170

M.H. D170

M.H. D170