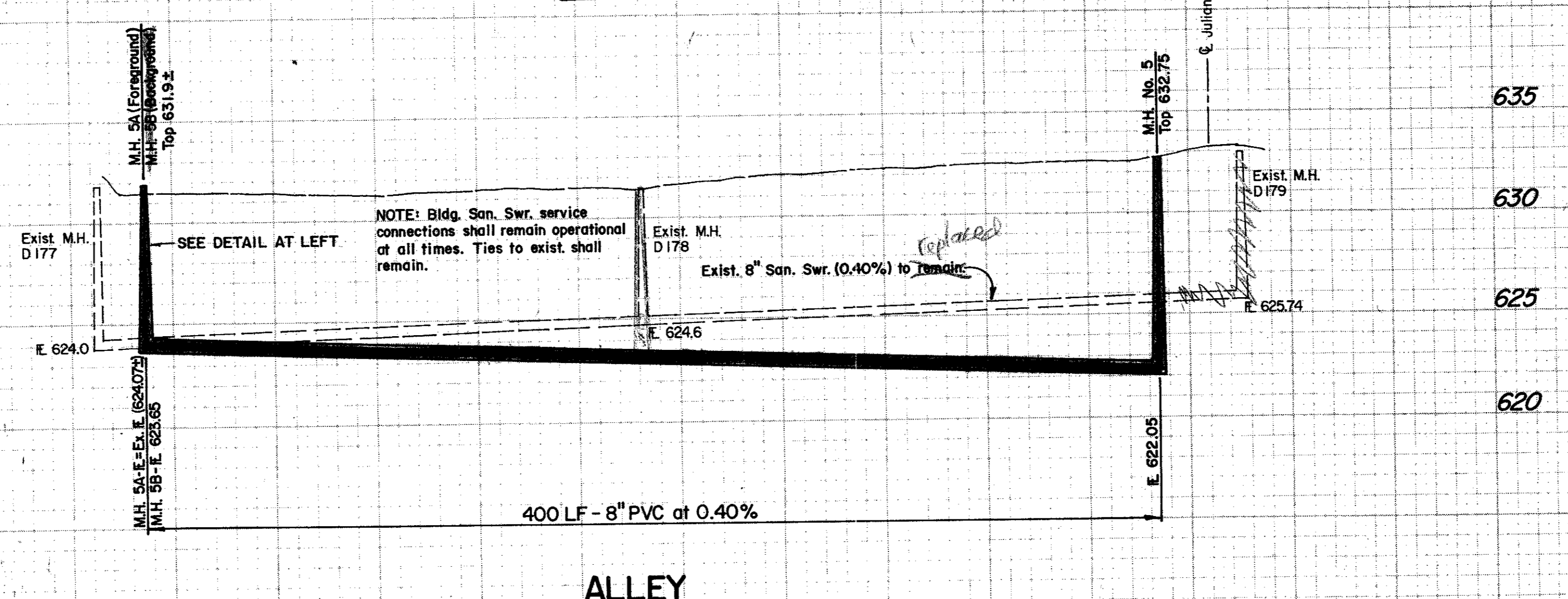
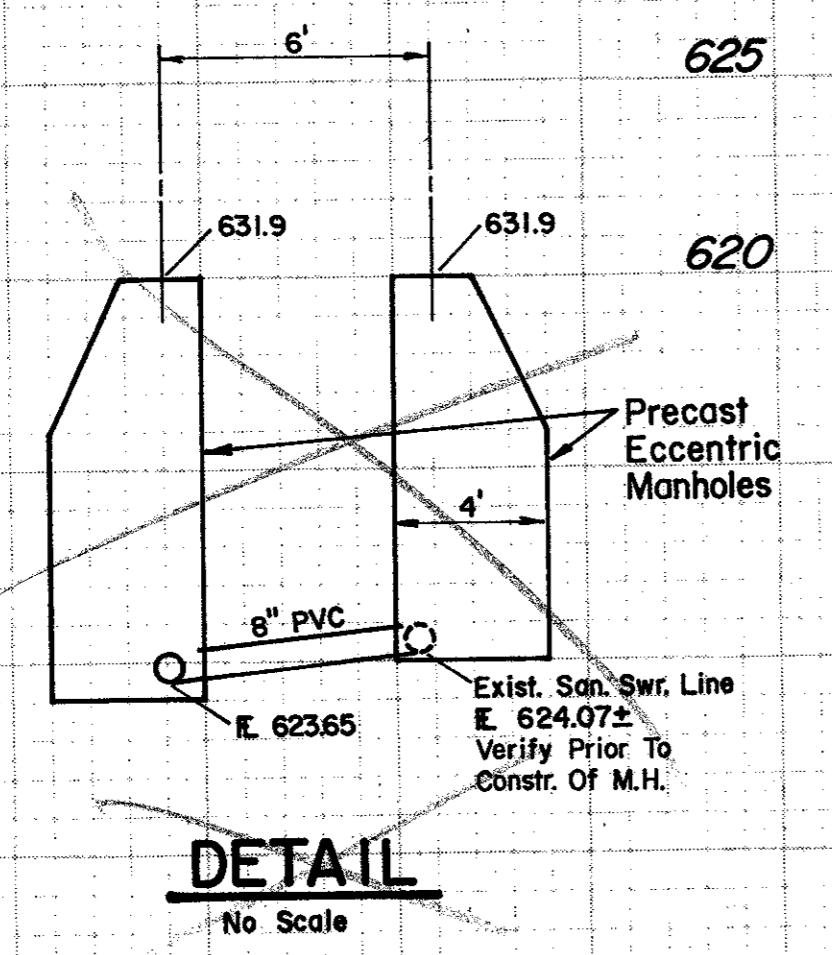
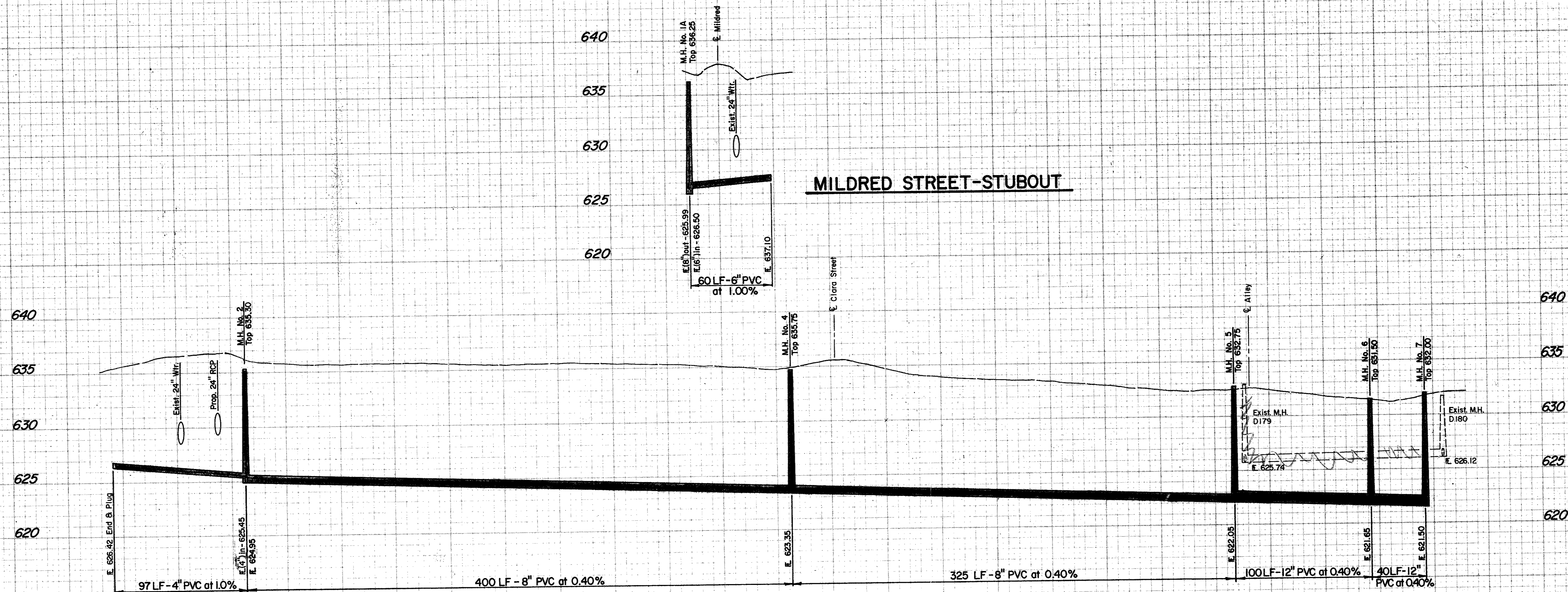


FINAL SURVEY
 DATE: 11/15/90
 BY: GINN, INC.
 SURVEYED BY: GINN, INC.
 CHECKED BY: GINN, INC.
 APPROVED BY: GINN, INC.

ORIGINAL SURVEY
 DATE: 11/15/90
 BY: GINN, INC.
 SURVEYED BY: GINN, INC.
 CHECKED BY: GINN, INC.
 APPROVED BY: GINN, INC.



No.	Revision	By	Date
TOWN OF ADDISON DALLAS COUNTY, TEXAS			
SANITARY SEWER IMPROVEMENTS			
PROFILES			
JULIAN STREET - ALLEY			
GINN, INC. Consulting Engineers Dallas, Texas			
Designed - GF	Drawn - TEC	Date - June, 1990	Job No. - 90443
Approved - HWS	Checked - GF	Scale - 1" = 40' H / 1" = 5' V	Sheet 35 of 37