

ST. Louis & Southwestern R.R.

NOTE: This headwall location may be adjusted in field as conditions dictate to coincide w/ exist. ditch. Location must be app'd by Engr.

SEE NOTE NO. 1 & RIGHT-SIDE DETAIL "B" ALSO, THIS SHIT.

LAT. A-1
84 L.F. - 24" R.C.P.
@ 5.76%

LAT. "B-1"
36" R.C.P. @ 1.25%
For Profile, see Sht.

Install 24" Water Main R.C.C.P. see details min. 6' cover. 12"

Sta. 6+00±
24" Valve, see specs
6" Flanged Outlet
6" 90° Bend
6" Valve
6" Fire Hydrant

NOTE: Railroad grade crossing to be purchased and installed by others. (Owner will purchase, Railroad will install)

McLean
(Quorum North)

OPUBCO Resources

Sta. 8+88.08
I.P. Set, 100' Lt. ☐

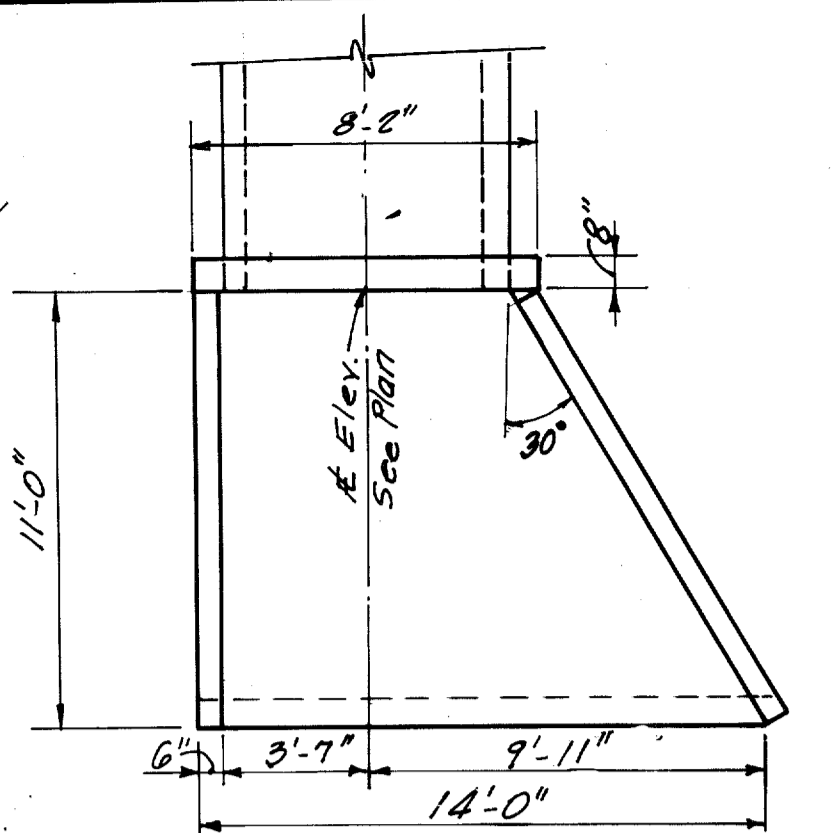
Sta. 8+88.08
I.P. Set, 40' Lt. ☐

Sta. 8+88.08
I.P. Set, 40' Lt. ☐

Sta. 8+88.08
I.P. Set, 100' Lt. ☐

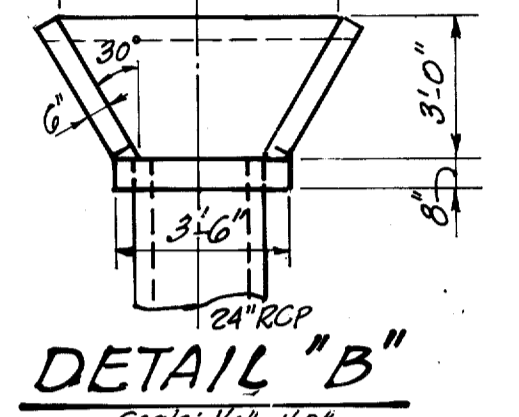
NOTE No. 1

Headwall similar to THD-CH-11, Type B, except straight wall as shown. All reinf. shall be as shown on CH-11. Contractor shall submit shop drawings for approval prior to beginning any construction. SEE DETAIL "A" & DETAIL "B" THIS SHIT.



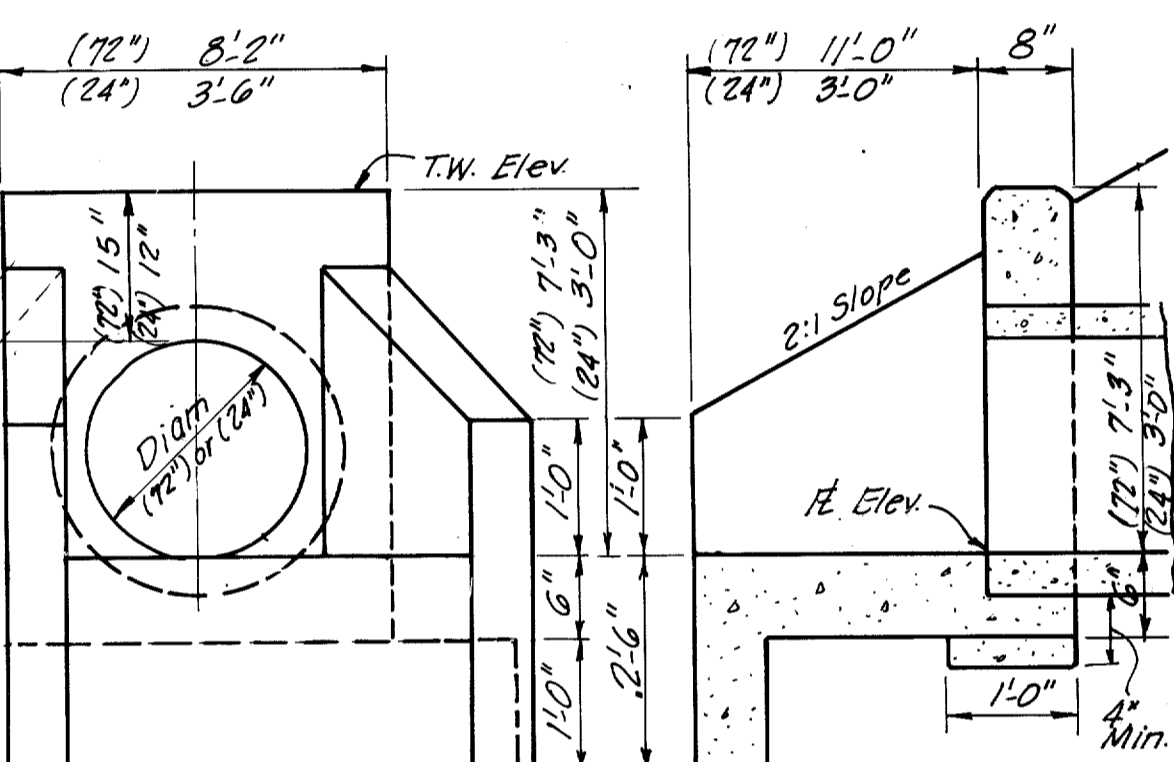
DETAIL "A"

5'-9 3/4" 14'-11 0"



DETAIL "B"

NOTE: All reinf. shall conform to THD CH-11 details. All details not shown hereon shall conform to THD CH-11.



ELEVATION

SECTION

No Scale

No Scale

Curve Data

Δ	6° 52' 23"
PR	1432.39'
T	86.02'
D	4° 00' 00"

STA. 5+00

STA. 10+00

MATCH LINE

MATCH LINE

LINE "A" 66" R.C.P.

QUORUM DRIVE

Install 12" P.V.C. SDR 14 Water Main

125 L.F. - 12" P.V.C. San. Sewer @ 0.80%

72" R.C.P. @ 1.50%

80 L.F. BORED JACKED Class IV Pipe

12" 60° Tee

12" plug

6" Valve

Fire Hydrant

12" 60° Tee

12" plug

6" Valve

Fire Hydrant

12" 60° Tee

12" plug

6" Valve

Fire Hydrant

12" 60° Tee

12" plug

6" Valve

Fire Hydrant

12" 60° Tee

12" plug

6" Valve

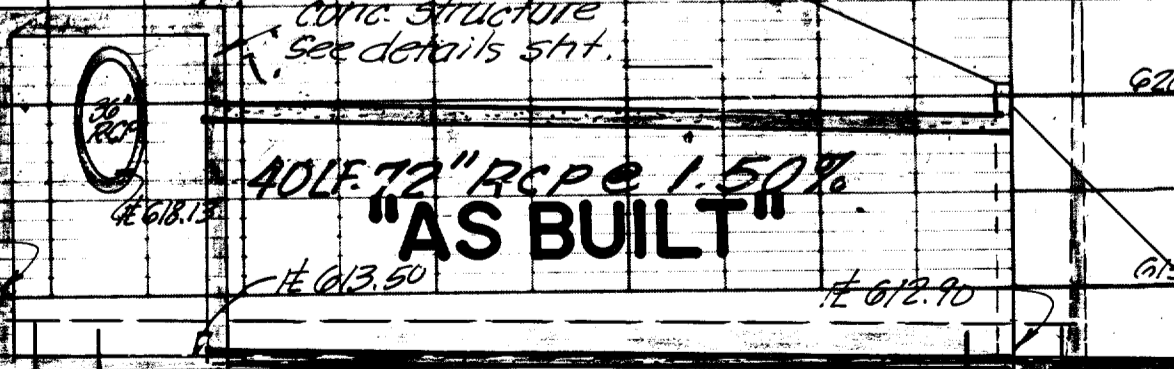
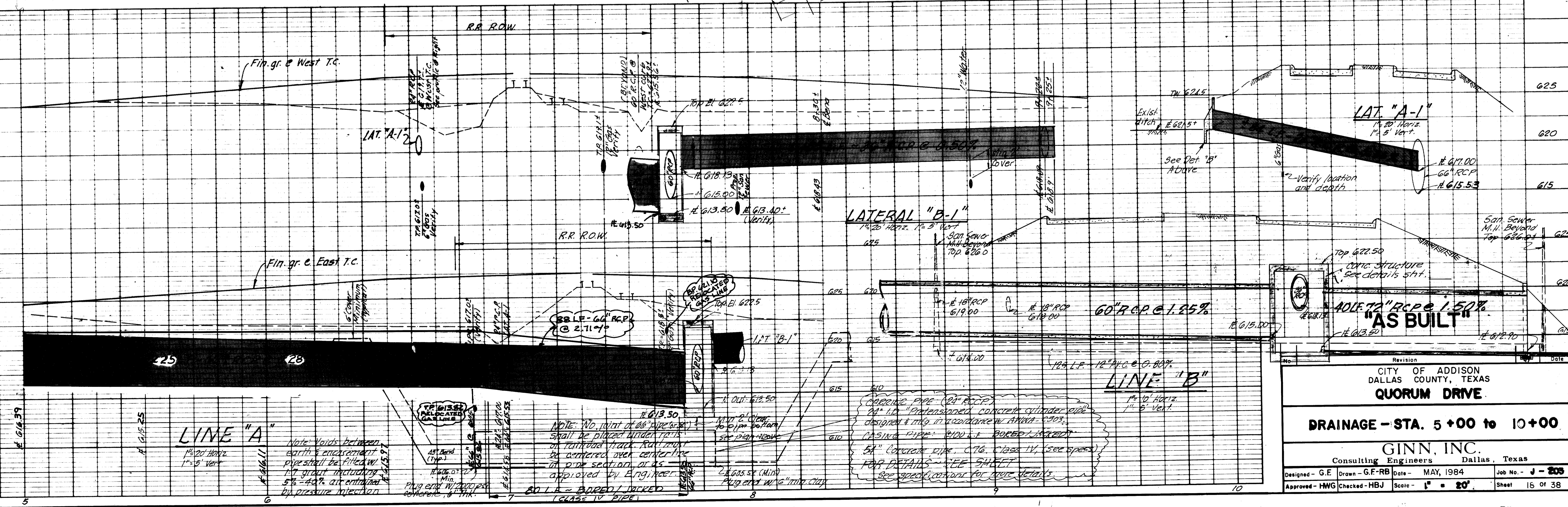
Fire Hydrant

12" 60° Tee

12" plug

6" Valve

Fire Hydrant



Revision _____ Date _____

CITY OF ADDISON
DALLAS COUNTY, TEXAS
QUORUM DRIVE

DRAINAGE - STA. 5+00 to 10+00

GINN, INC.
Consulting Engineers Dallas, Texas

Designed - G.E. Drawn - G.F.RB Date - MAY, 1984 Job No. - J - 205
Approved - HWG Checked - HBJ Scale - 1" = 20' Sheet 16 of 38