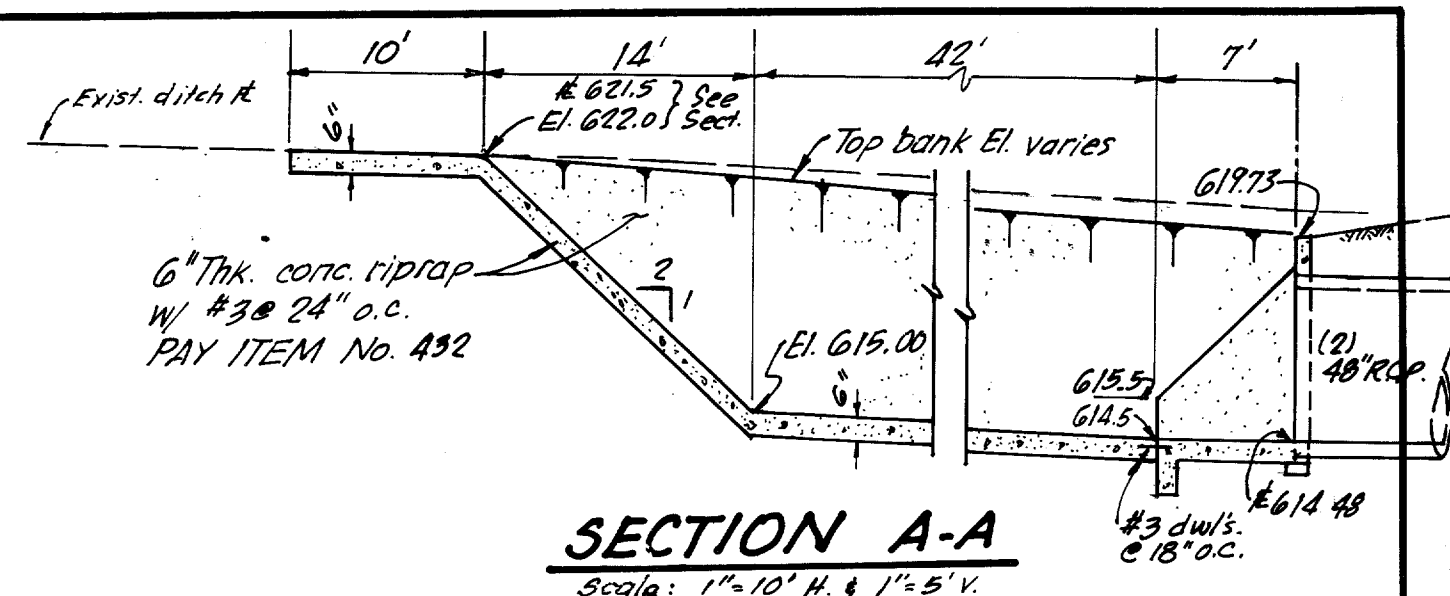
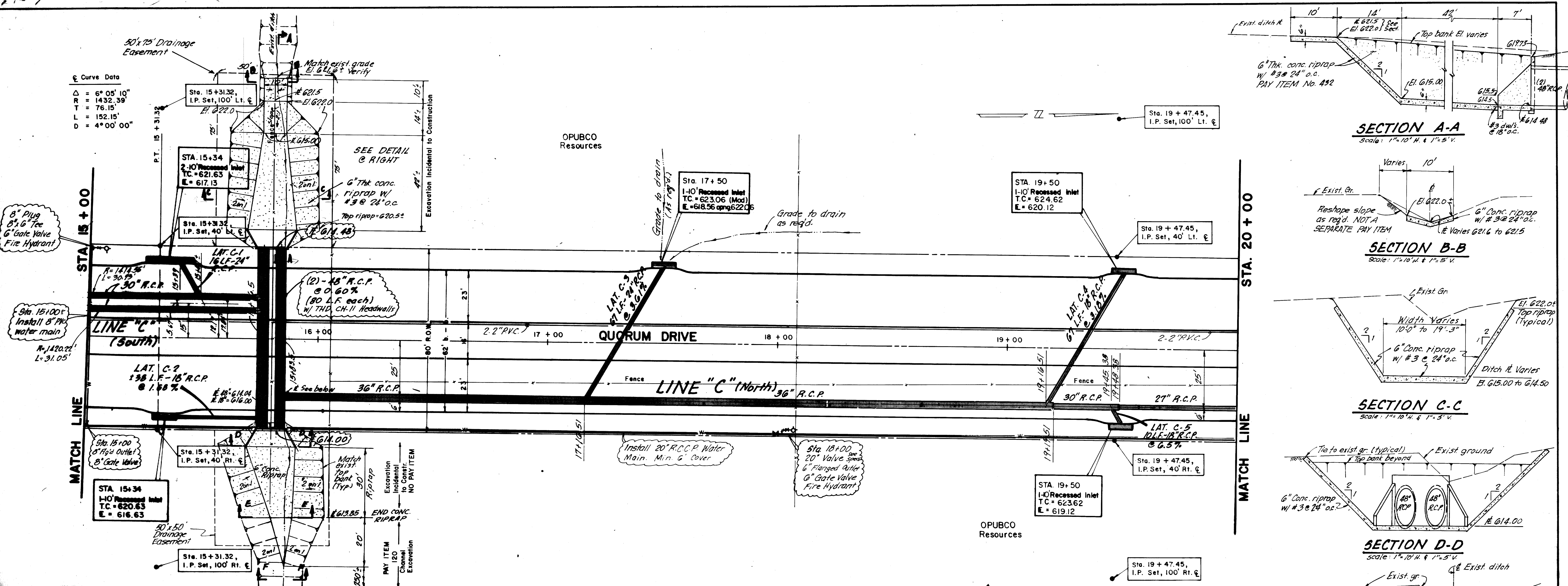
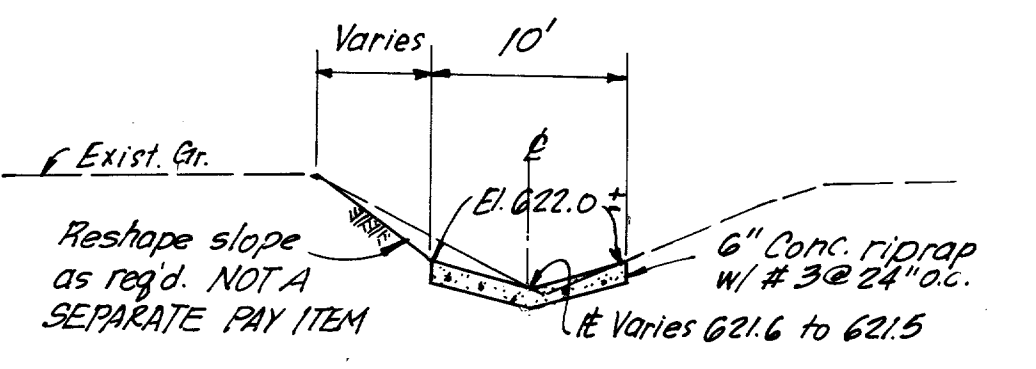


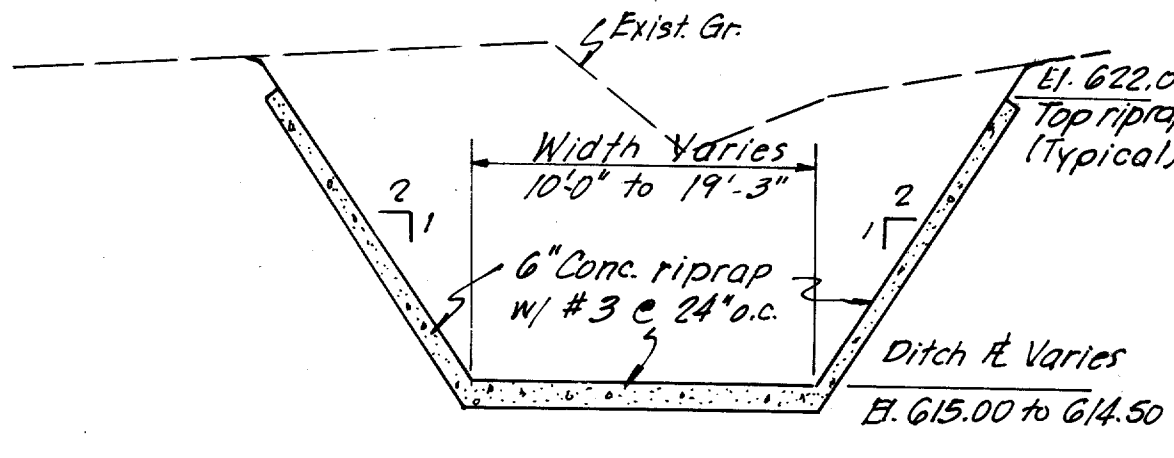
Curve Data
 $\Delta = 6^\circ 05' 10''$
 $R = 1432.39'$
 $L = 76.15'$
 $T = 152.15'$
 $D = 4^\circ 00' 00''$



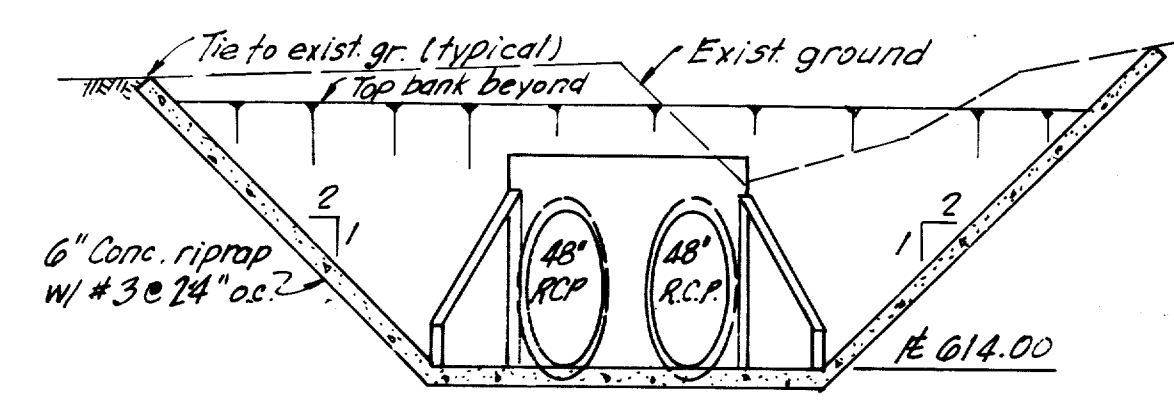
SECTION A-A
 Scale: 1" = 10' H. & 1" = 5' V.



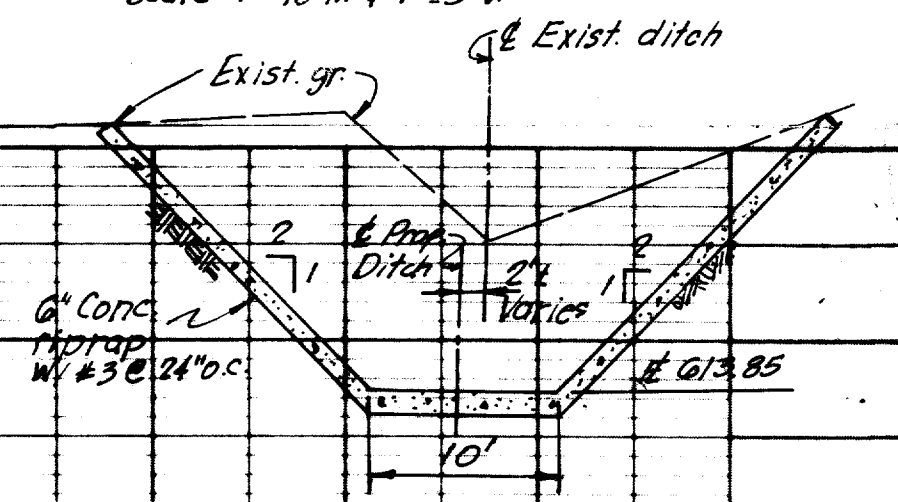
SECTION B-B
 Scale: 1" = 10' H. & 1" = 5' V.



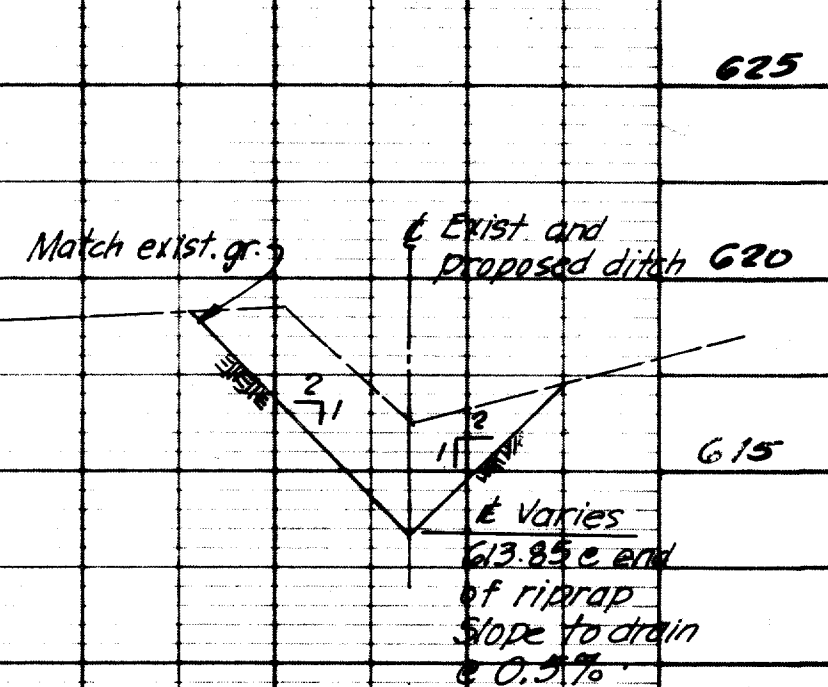
SECTION C-C
 Scale: 1" = 10' H. & 1" = 5' V.



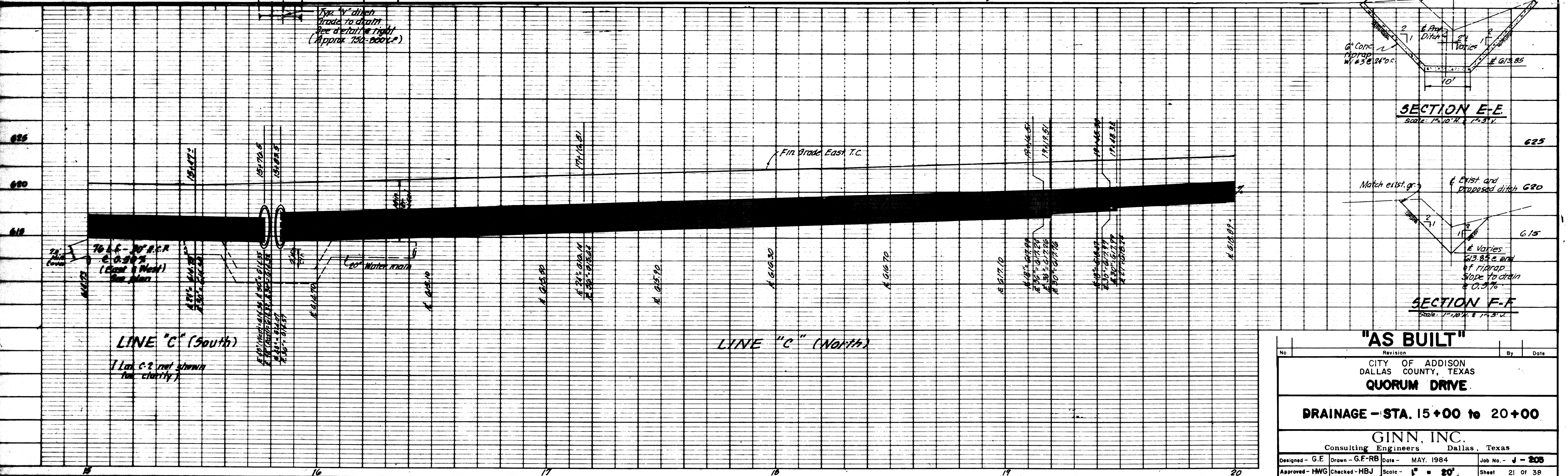
SECTION D-D
 Scale: 1" = 10' H. & 1" = 5' V.



SECTION E-E
 Scale: 1" = 10' H. & 1" = 5' V.



SECTION F-F
 Scale: 1" = 10' H. & 1" = 5' V.



"AS BUILT"			
No.	Revision	By	Date
CITY OF ADDISON DALLAS COUNTY, TEXAS QUORUM DRIVE			
DRAINAGE - STA. 15+00 to 20+00			
GINN, INC. Consulting Engineers Dallas, Texas			
Designed - G.E.	Drawn - G.F.-RB	Date - MAY, 1984	Job No. - J - 208
Approved - HWG	Checked - HBJ	Scale - 1" = 20'	Sheet 21 of 38