

Parkway  
Business Center I

STA. 35 + 00  
MATCH LINE

QUORUM DRIVE

LINE "E"

STA. 40 + 00  
MATCH LINE

Sta. 38 + 00  
5' SM. Inlet  
T.C = 638.93  
E = 634.43

Sta. 39 + 26.85  
I.P. Set, 40' Lt.  $\epsilon$

Sta. 39 + 26.85  
I.P. Set, 100' Lt.  $\epsilon$

Sta. 38 + 00  
10' Recessed Inlet  
T.C = 638.10  
E = 633.60

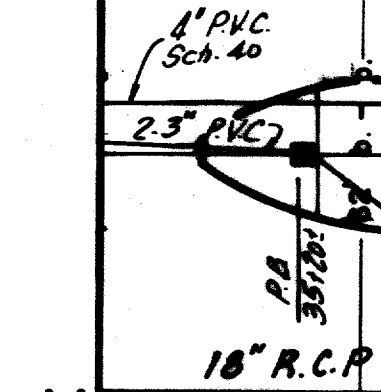
Sta. 39 + 26.85  
I.P. Set, 40' Rt.  $\epsilon$

Sta. 39 + 26.85  
I.P. Set, 100' Rt.  $\epsilon$

B.M. #2 - 2 Keller Springs Road Survey  
On Top Curb Center Radius Island  
at Sta. 14 + 60  $\pm$  and Right 40'  
Elevation 638.94'

"AS BUILT"

No.	Revision	By	Date
CITY OF ADDISON DALLAS COUNTY, TEXAS <b>QUORUM DRIVE.</b> <b>DRAINAGE - STA. 35+00 to 40+00.</b> GINN, INC. Consulting Engineers Dallas, Texas Designed - G.E Drawn - G.F.R.B Date - MAY, 1984 Job No. - 1807 Approved - H.W.G. Checked - H.B.J. Scale - 1" = 30' Sheet 25 of 38			



Install 16" Ductile Iron Water Main  
Minimum 48" Cover

LAT. E-3  
 $\pm 34$  L.F. - 18" R.C.P.  
@ 3.06%

LAT. E-4  
10 L.F. - 18" R.C.P.  
@ 1.00%

Relocate Fire Hydrant  
as shown. Provide new  
6" PVC main as shown  
w/ fittings, 6" Gate valve  
for complete installation

Saw and Remove Asphalt,  
Replace w/ 8" Concrete Pvm't.  
Match Exist. Grades

Saw and Remove Asphalt,  
Replace w/ 8" Concrete Pavement  
Match Exist. Grades

E 632.15

E 633.15

E 633.65

E 633.57  
E 633.50  
E 633.53  
E 633.54

LINE "E"

640

635

630

640

635

36

37

38

39

40