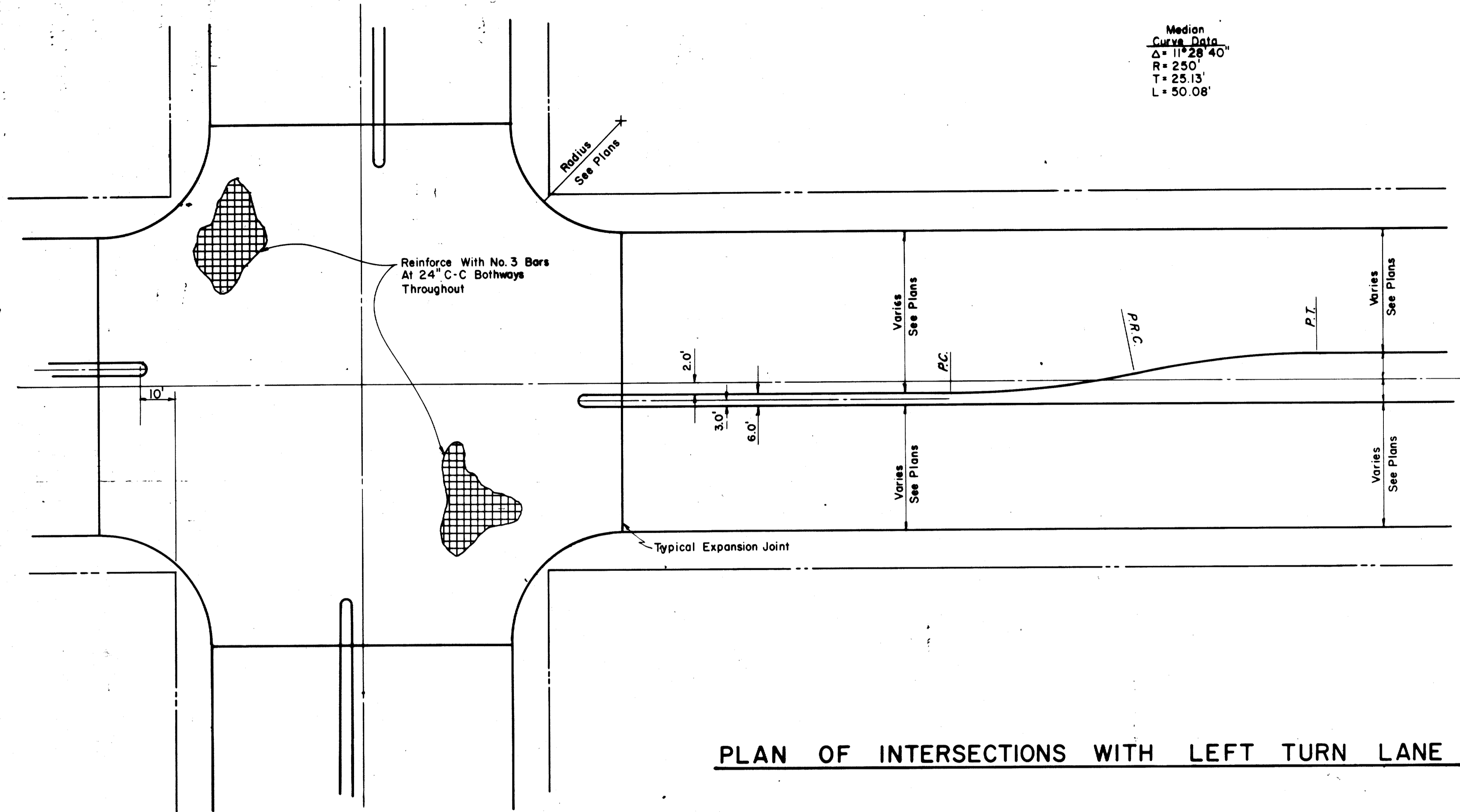
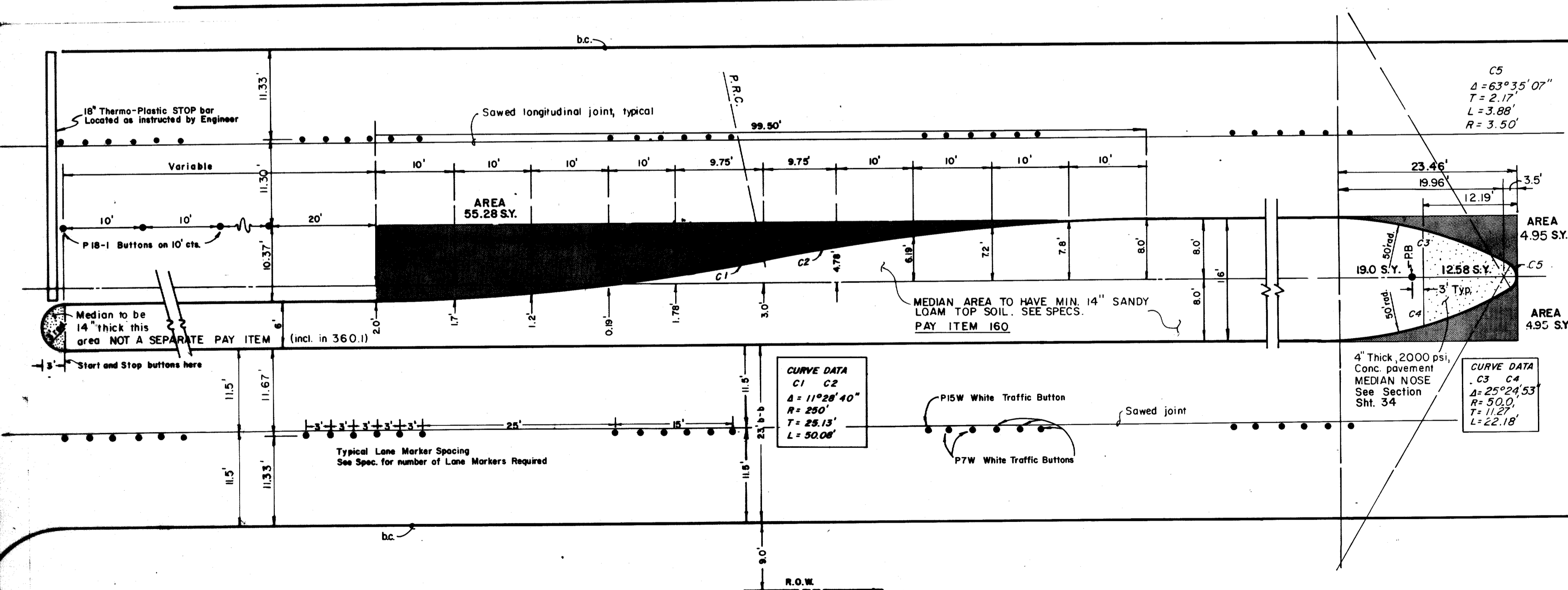


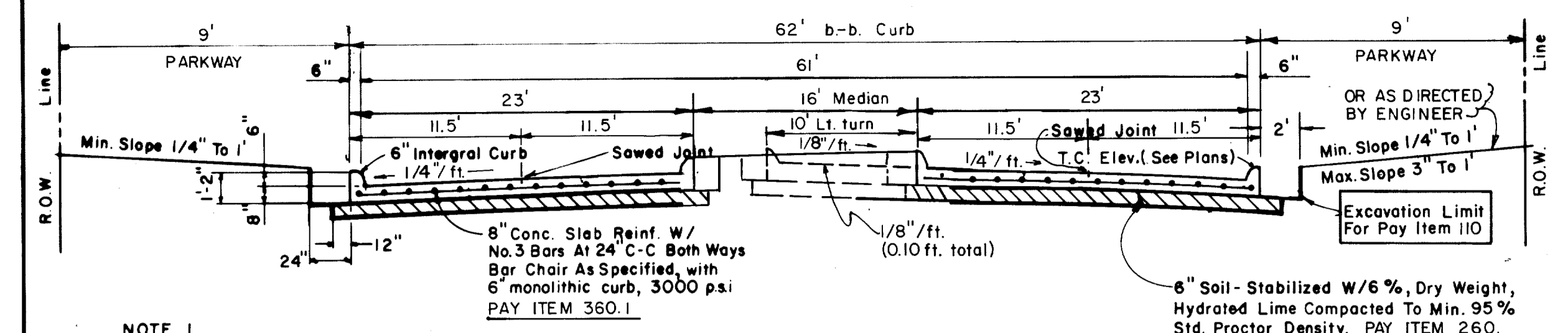
Median  
Curve Data  
 $\Delta = 11^\circ 28' 40''$   
 $R = 250'$   
 $T = 25.13'$   
 $L = 50.08'$



PLAN OF INTERSECTIONS WITH LEFT TURN LANE

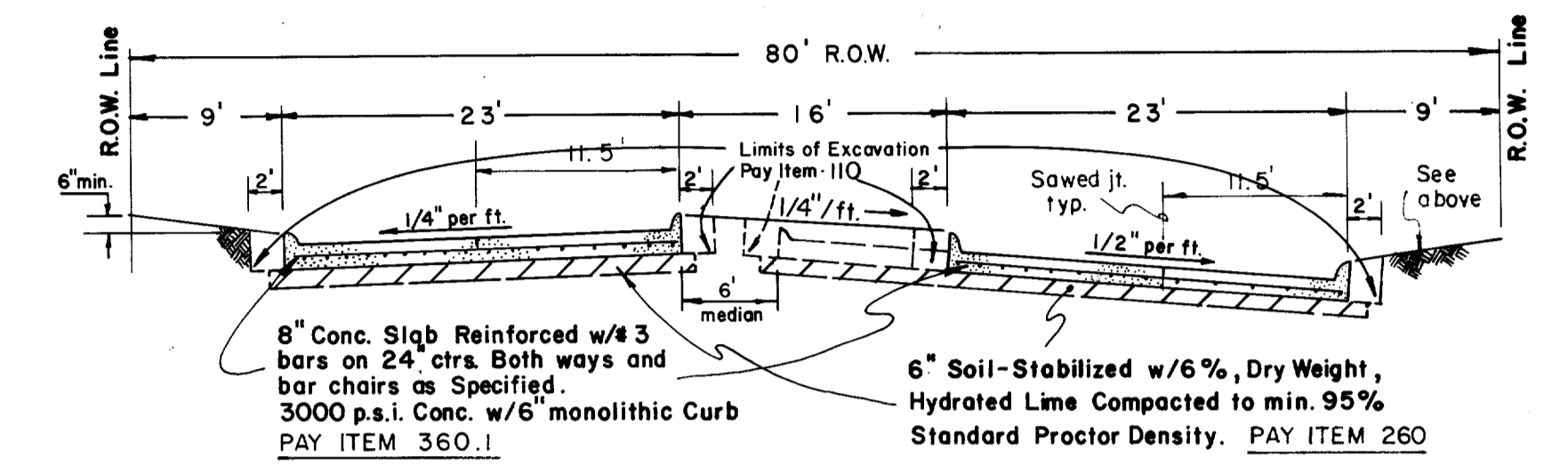


LEFT TURN LANE & LANE MARKER DETAIL



NOTE 1  
Backfill material NOT A SEPARATE PAY ITEM  
Material acquired from excavation may be used if approved by Engineer

(A) DIVIDED WEST T.C. ELEV. SAME AS EAST T.C. ELEV.

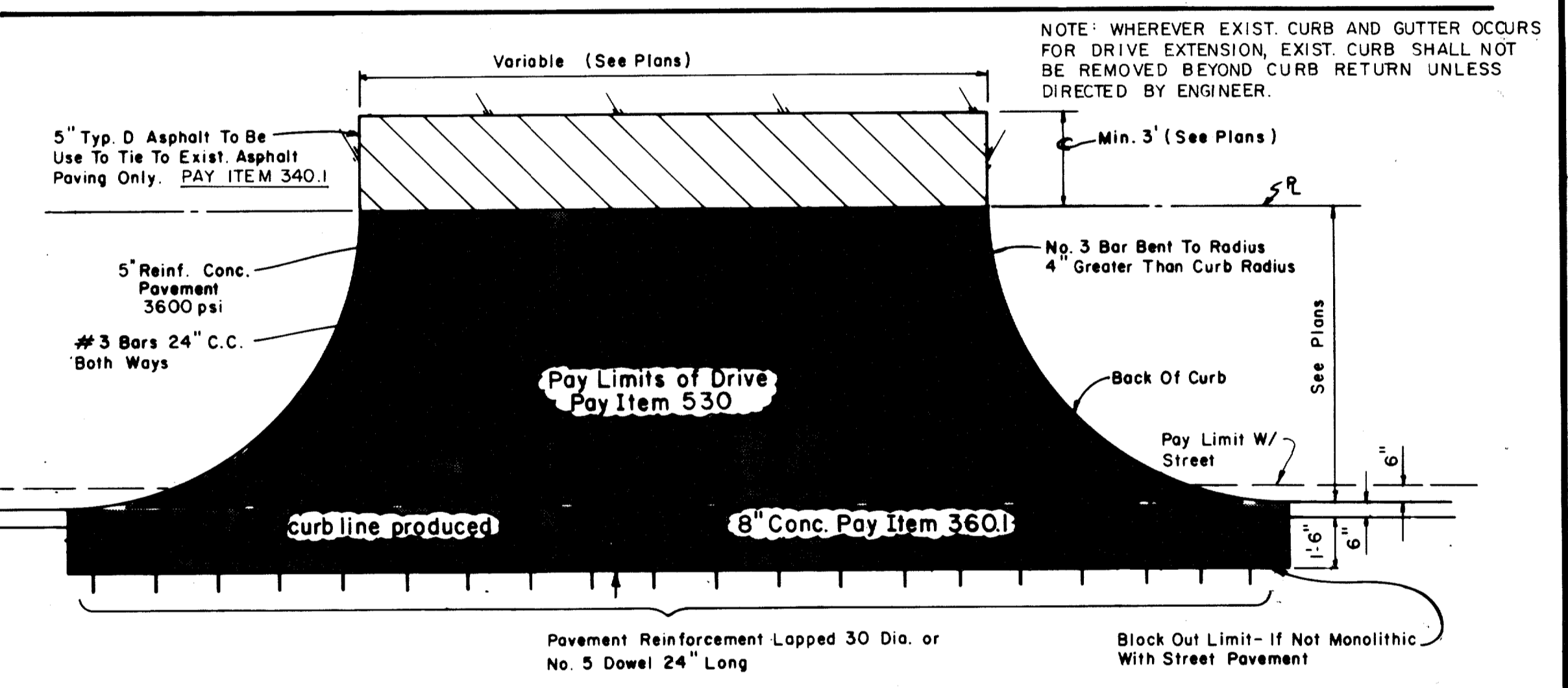


Note:  
Backfill material NOT A SEPARATE PAY ITEM - Material acquired from excavation may be used if approved by Engineer.

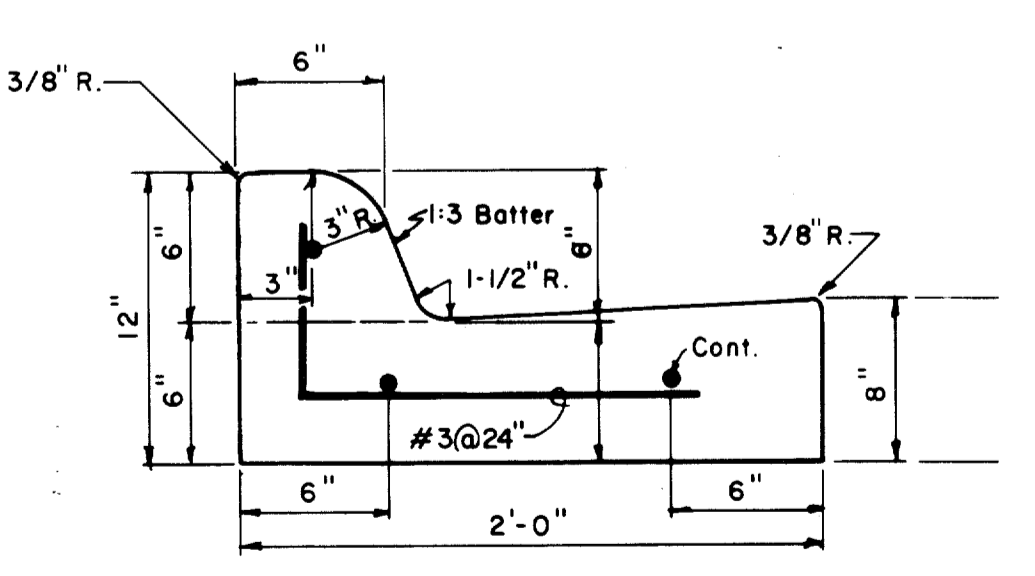
MEDIAN SHALL HAVE MINIMUM 14" SANDY LOAM TOP SOIL

(B) DIVIDED WEST T.C. ELEV. HIGHER THAN EAST T.C. ELEV., SEE PLANS

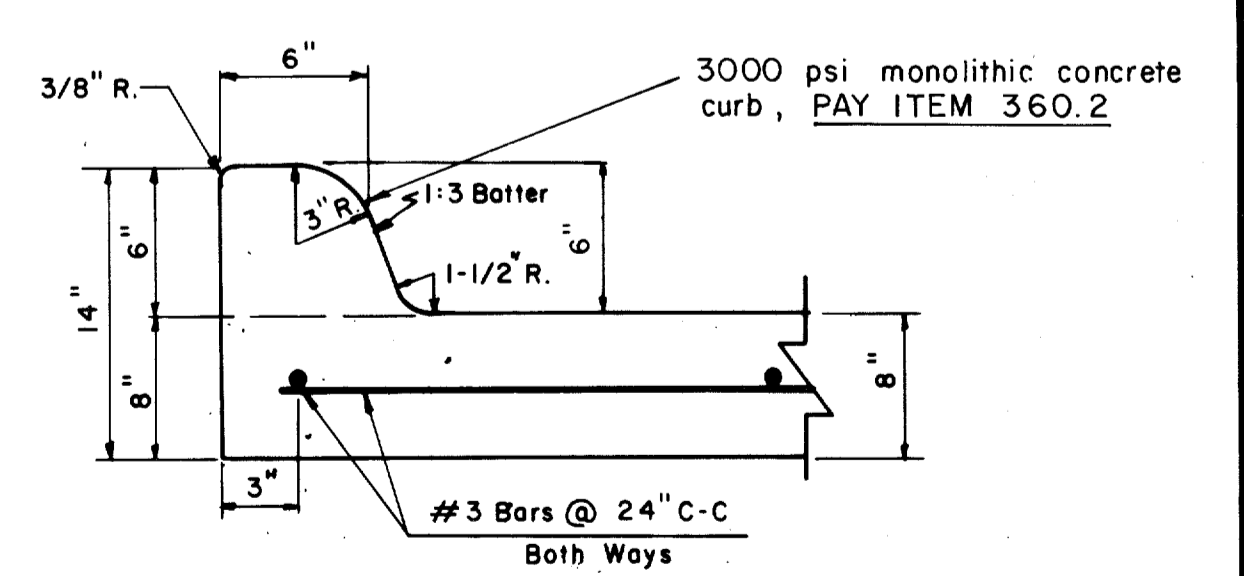
TYPICAL PAVING SECTION DETAILS



DRIVEWAY PAVING DETAIL



SEPARATE CURB & GUTTER PAY ITEM 530.1 REINFORCEMENT SHALL BE No. 5 BARS



6" INTEGRAL CURB & GUTTER DETAIL 3000 psi monolithic concrete curb, PAY ITEM 360.2

"AS BUILT"

CITY OF ADDISON DALLAS COUNTY, TEXAS QUORUM DRIVE		
PAVING DETAILS A		
GINN, INC. Consulting Engineers Dallas, Texas		
DESIGNED - H.K.	DRAWN - S.M.M.	DATE - MAY, 1984
APPROVED - H.G.	CHECKED - G.F.	SCALE - NONE
JOB No.	J-203	SHEET 33 OF 38