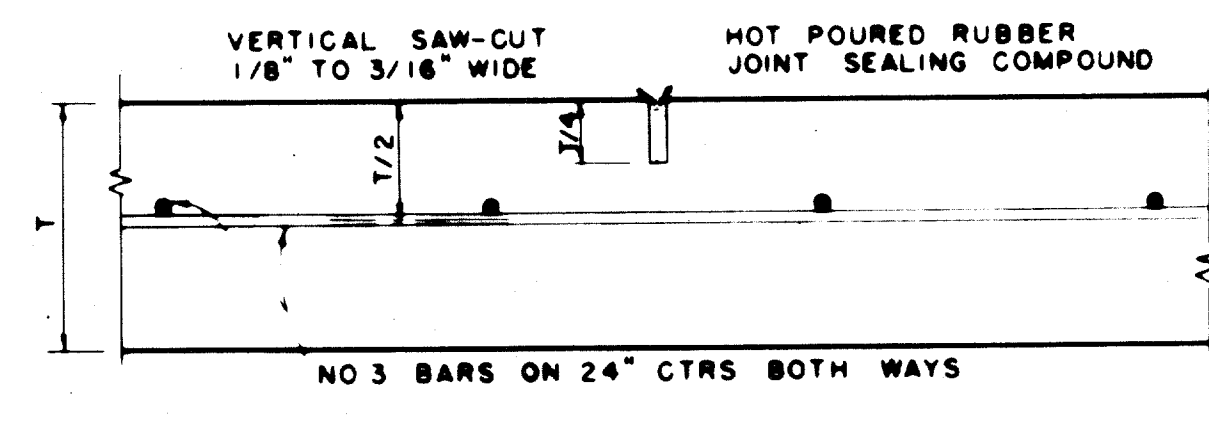
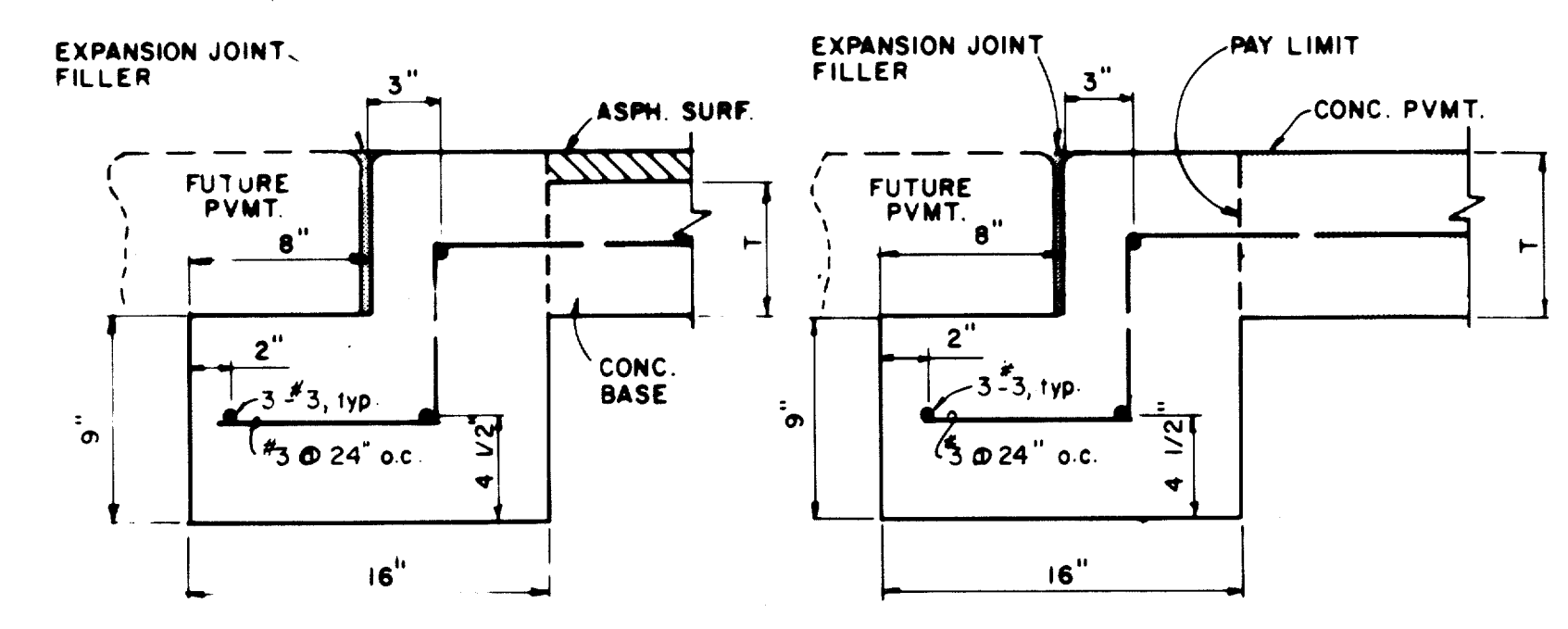


SPACING DIAGRAM FOR JOINTS
 IDENTICAL FOR STREETS (CONCRETE PAVEMENT OR BASE) AND ALLEYS EXCEPT THAT EXPANSION JOINTS FOR ALLEYS SHALL BE PLACED AT THE END OF THE RETURN IN LINE WITH THE PROPERTY LINE. SPACING OF EXPANSION JOINTS SHALL NOT EXCEED 600 FEET.

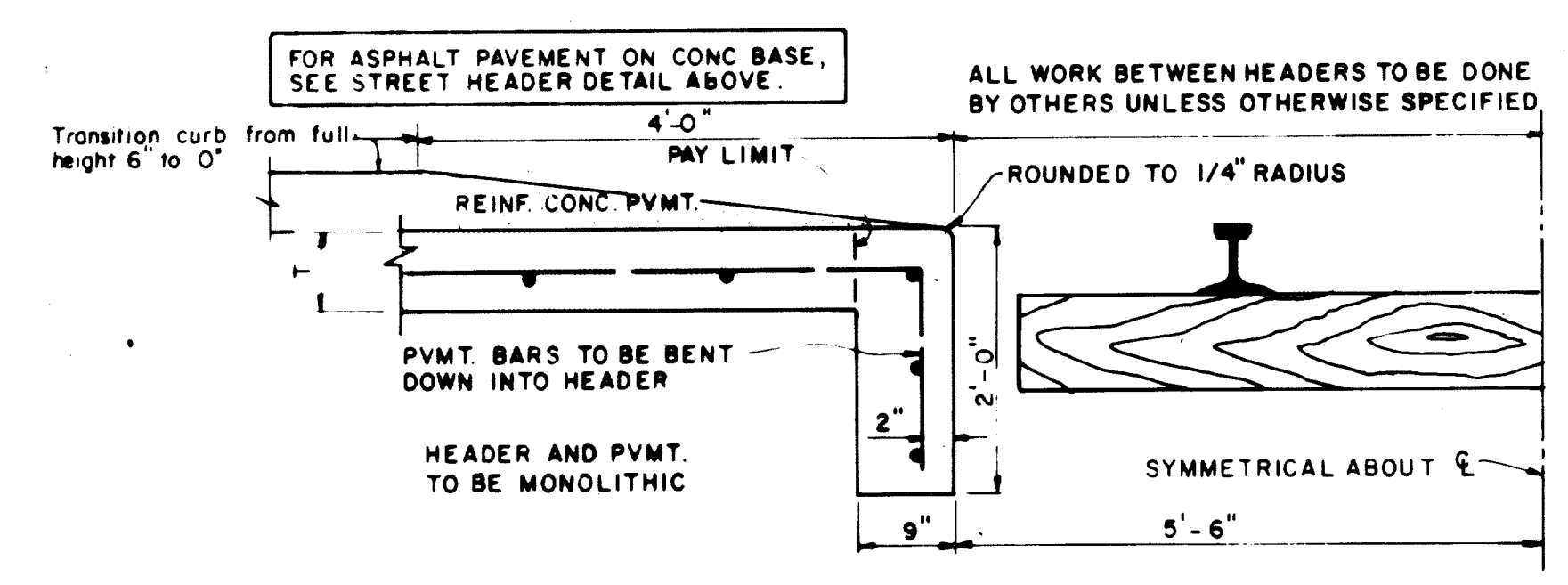
CONSTRUCTION JOINT OR SAWED LONGITUDINAL DUMMY JOINT ALONG C.L. OF ALL SINGLE ROADWAY SECTIONS EXCEPT 20' ROADWAY.
 ADDITIONAL SIMILAR JOINT 10'-0" EACH SIDE C.L. FOR 56' & 60' ROADWAY SECTIONS



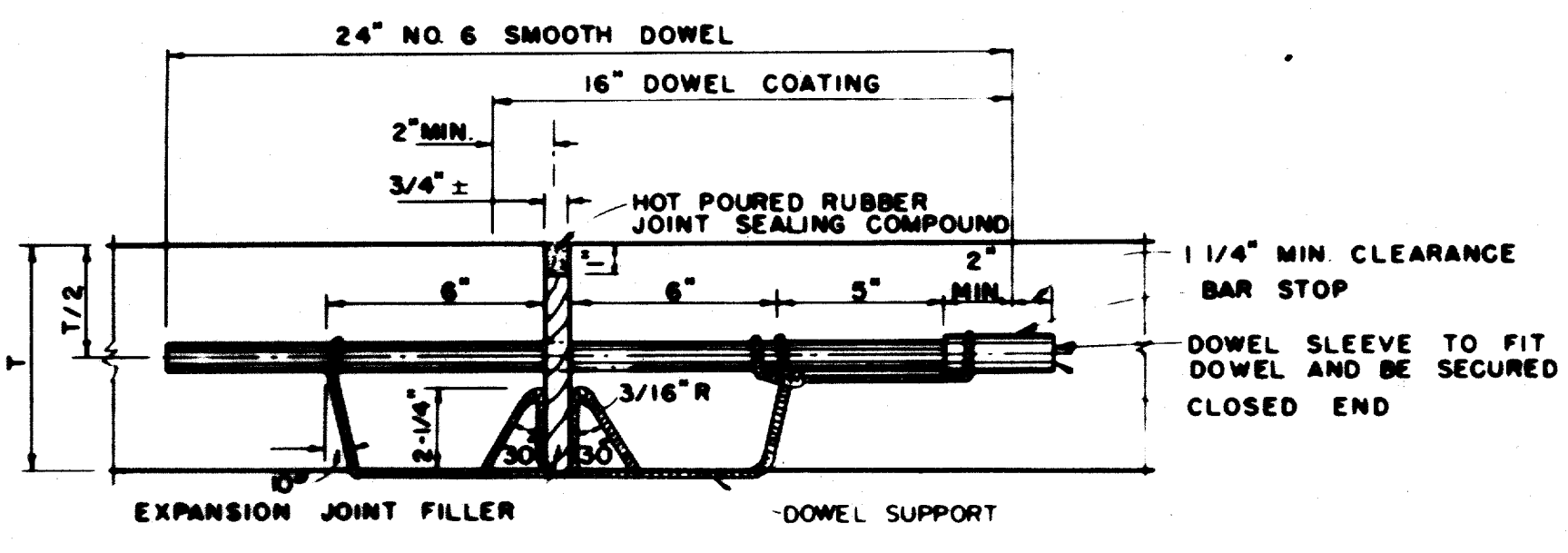
SAWED DUMMY JOINT
 IDENTICAL FOR STREETS AND ALLEYS EXCEPT ALLEY LONGITUDINAL REINFORCEMENT BARS



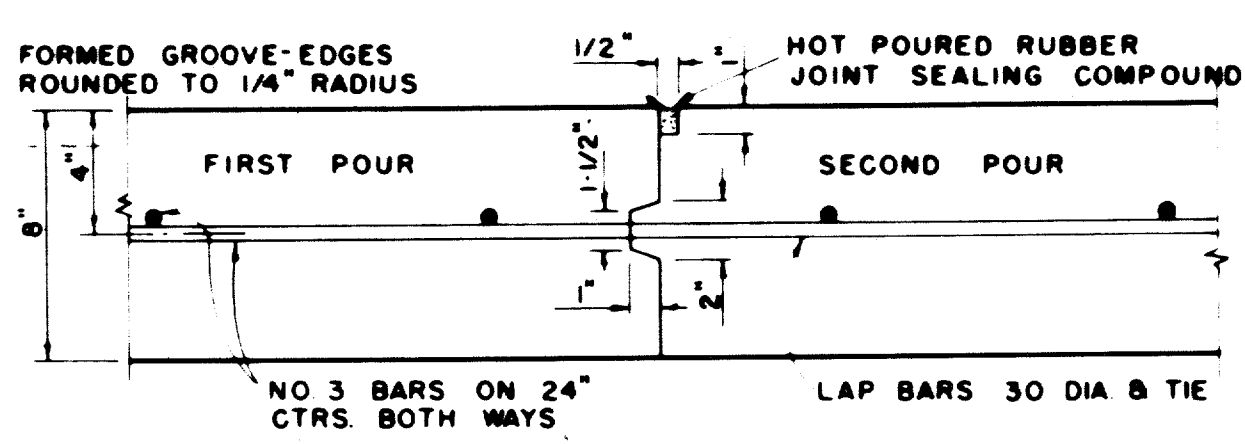
STREET HEADER



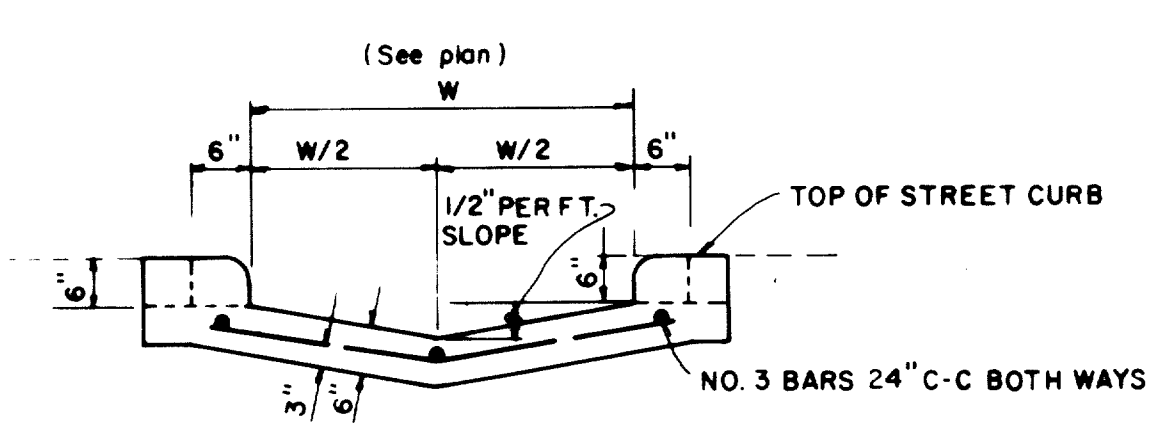
RAILROAD HEADER



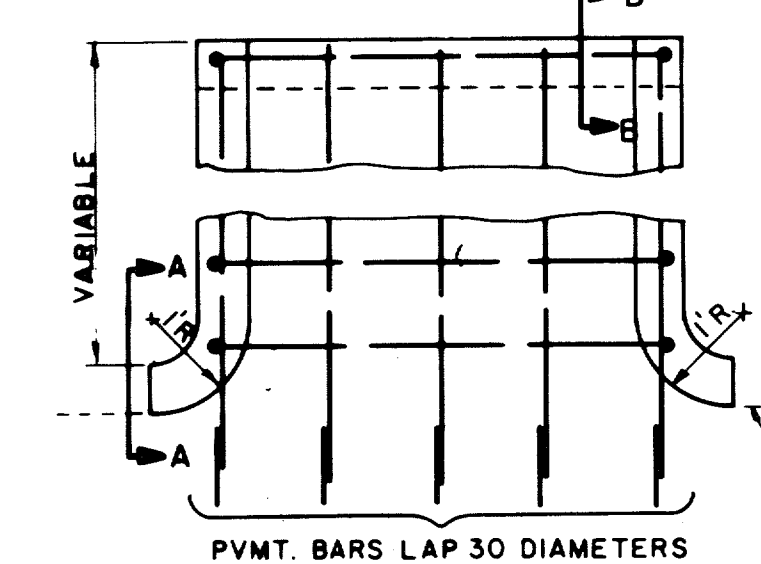
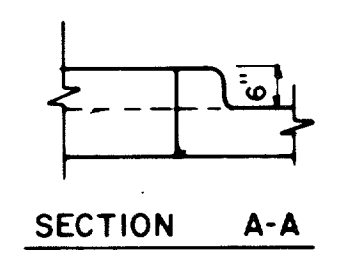
TRANSVERSE EXPANSION JOINT
 IDENTICAL FOR STREETS & ALLEYS



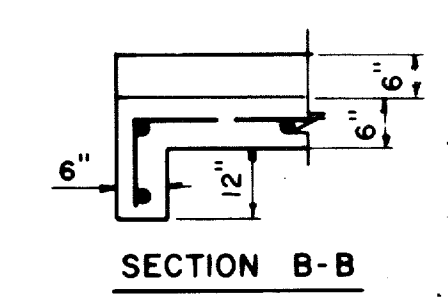
CONSTRUCTION JOINT
 FOR 8" THICKNESS PAVEMENT OR BASE



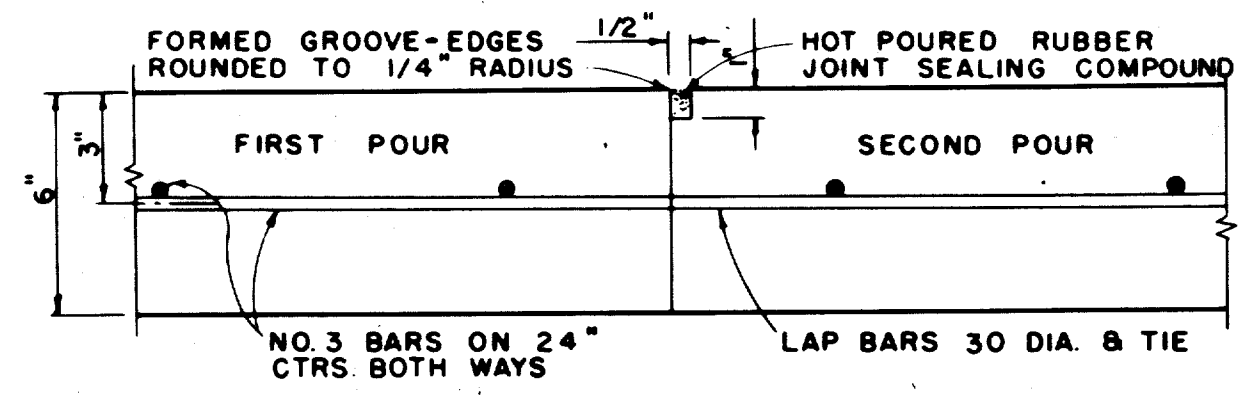
SECTION AT CURB FACE



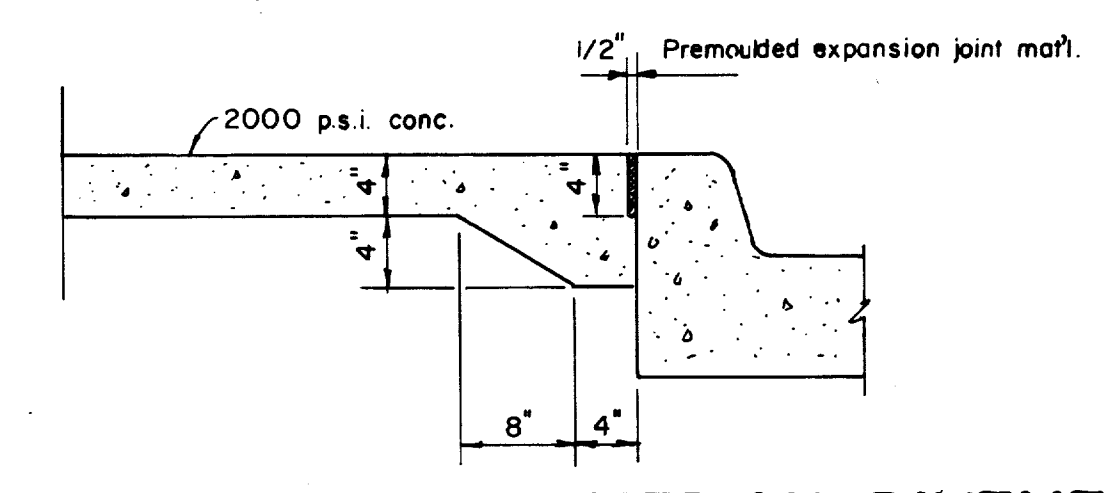
PLAN



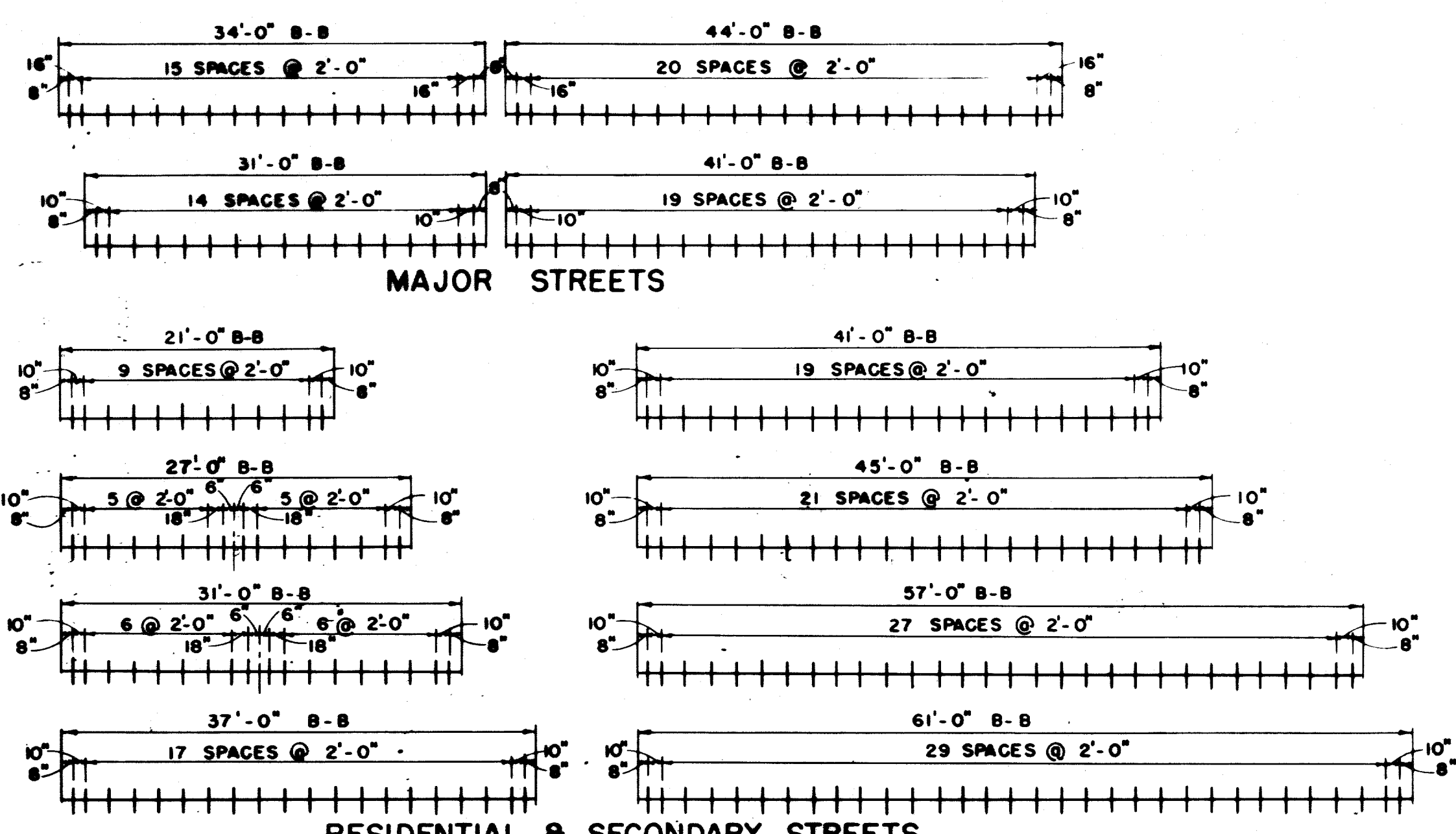
FLUME



CONSTRUCTION JOINT
 FOR 6" THICKNESS PAVEMENT OR BASE
 IDENTICAL FOR STREETS AND ALLEYS EXCEPT ALLEY LONGITUDINAL REINFORCEMENT BARS.



NON-REINFORCED MEDIAN PAVEMENT



SPACING DIAGRAM FOR DOWELS AT EXPANSION JOINTS

"AS BUILT"
 CITY OF ADDISON
 DALLAS COUNTY, TEXAS
 QUORUM DRIVE

PAVING DETAILS B

GINN, INC.
 Consulting Engineers Dallas, Texas

DESIGNED-H.K. DRAWN-S.M.M. DATE- MAY, 1984 JOB No. J-203
 APPROVED-H.G. CHECKED-G.F. SCALE- NONE SHEET 34 OF 38