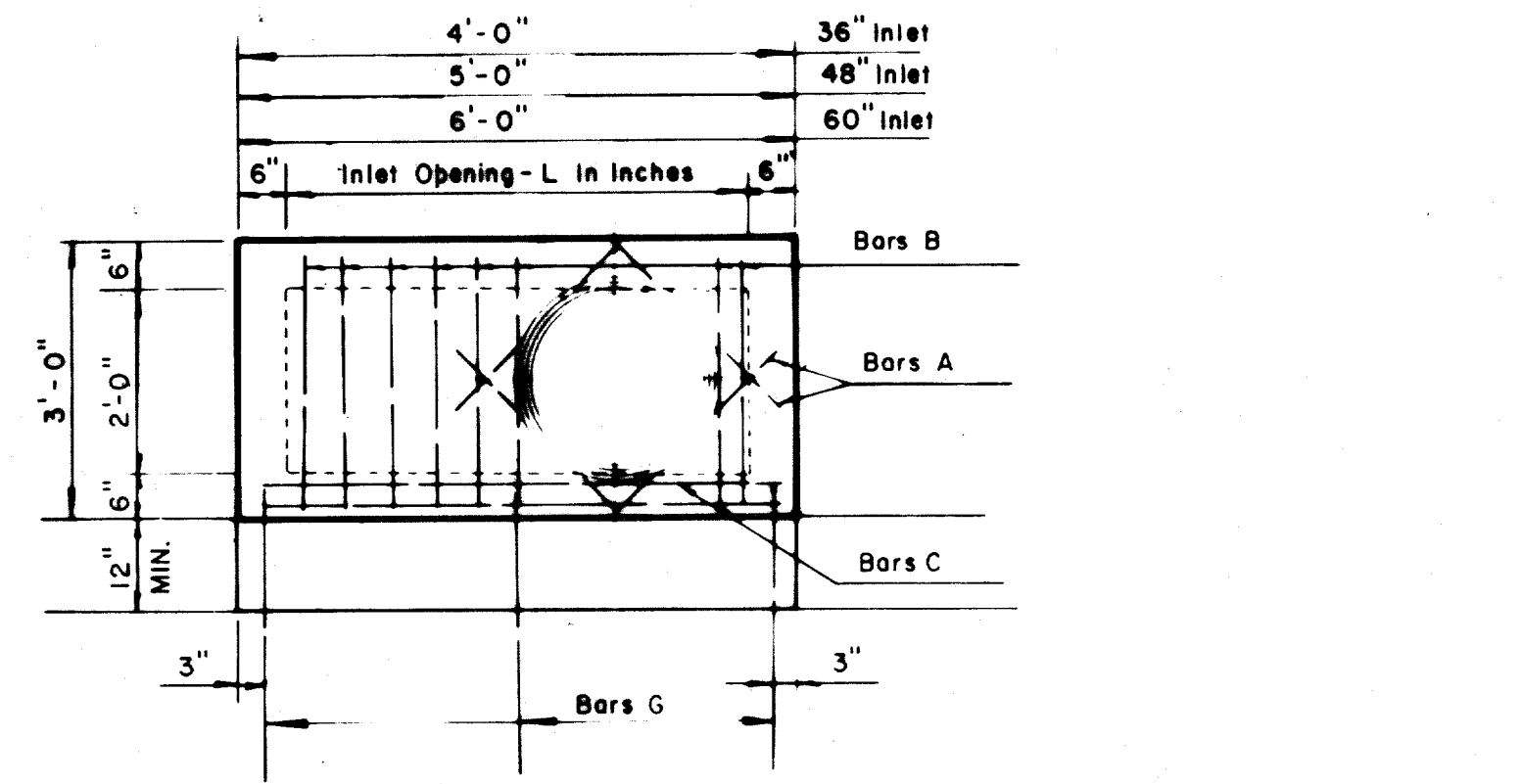
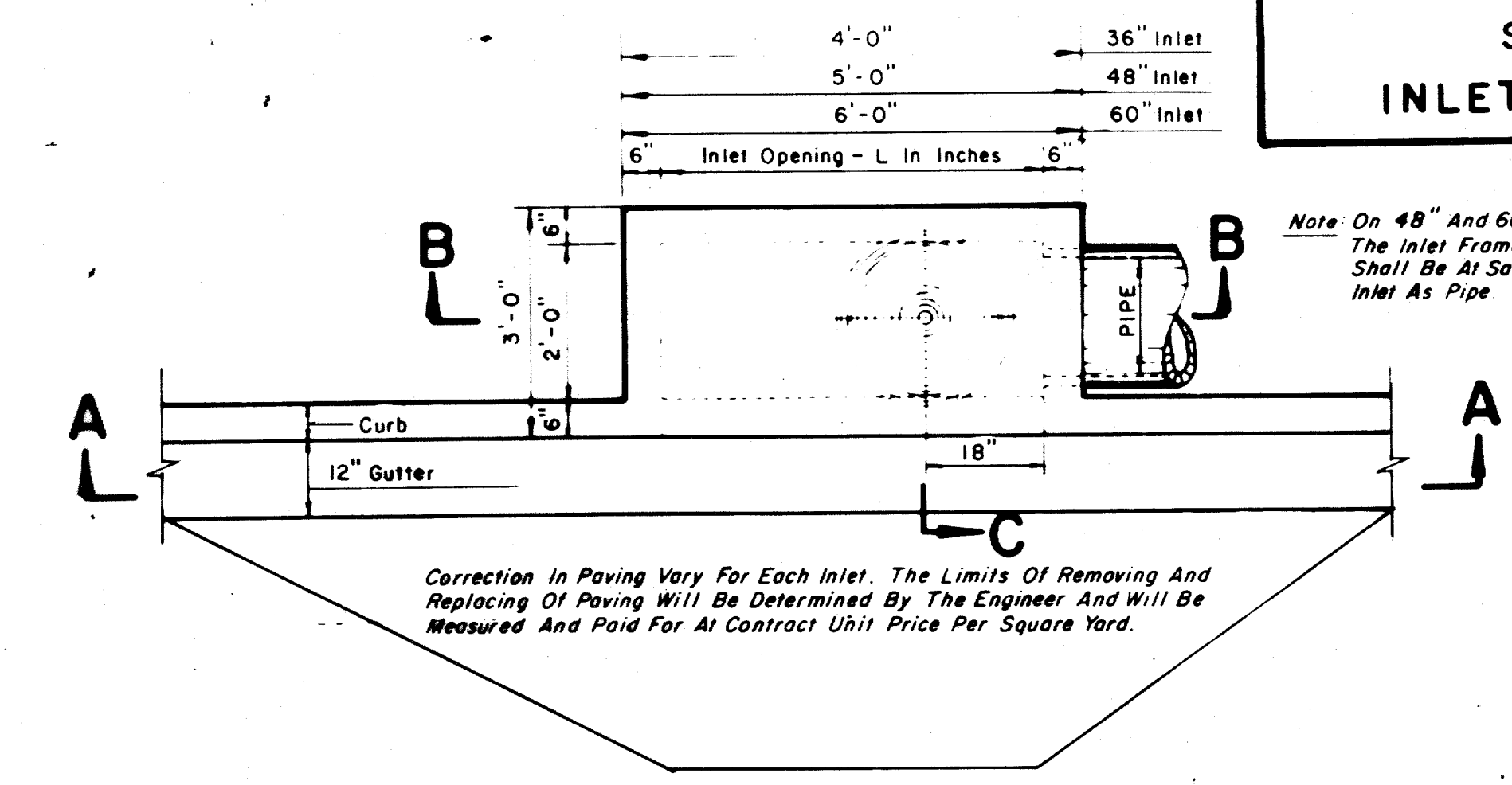


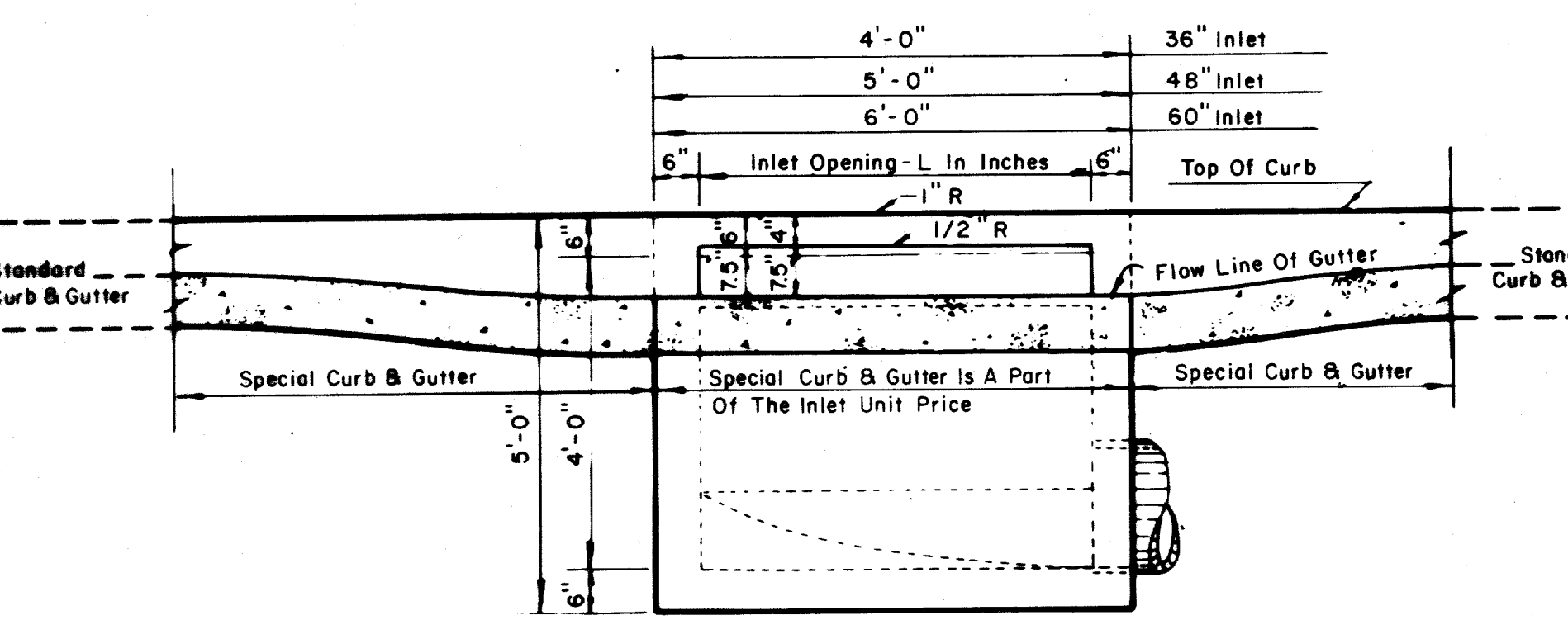
SECTION B-B SECTION C-C



REINFORCING PLAN

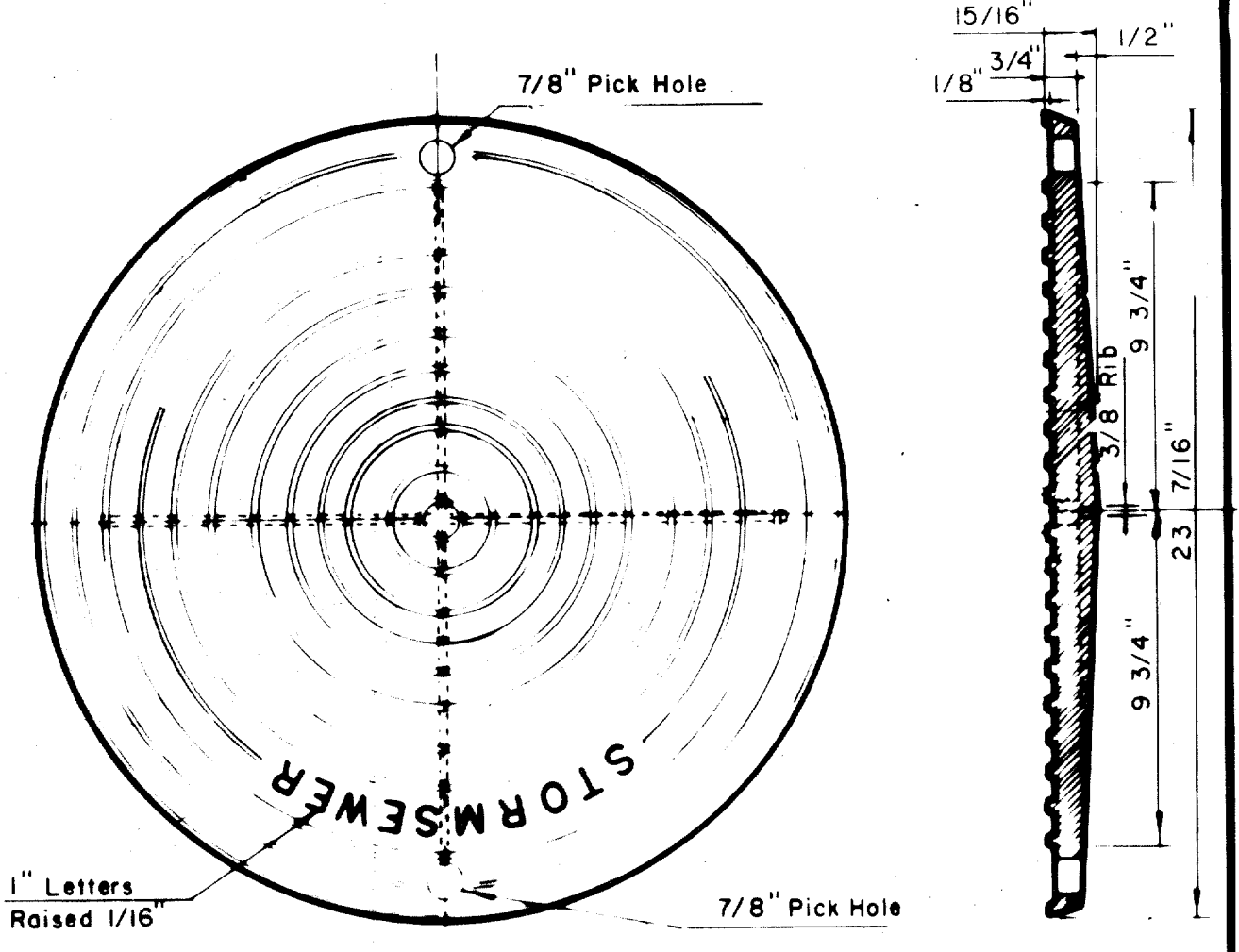


PLAN

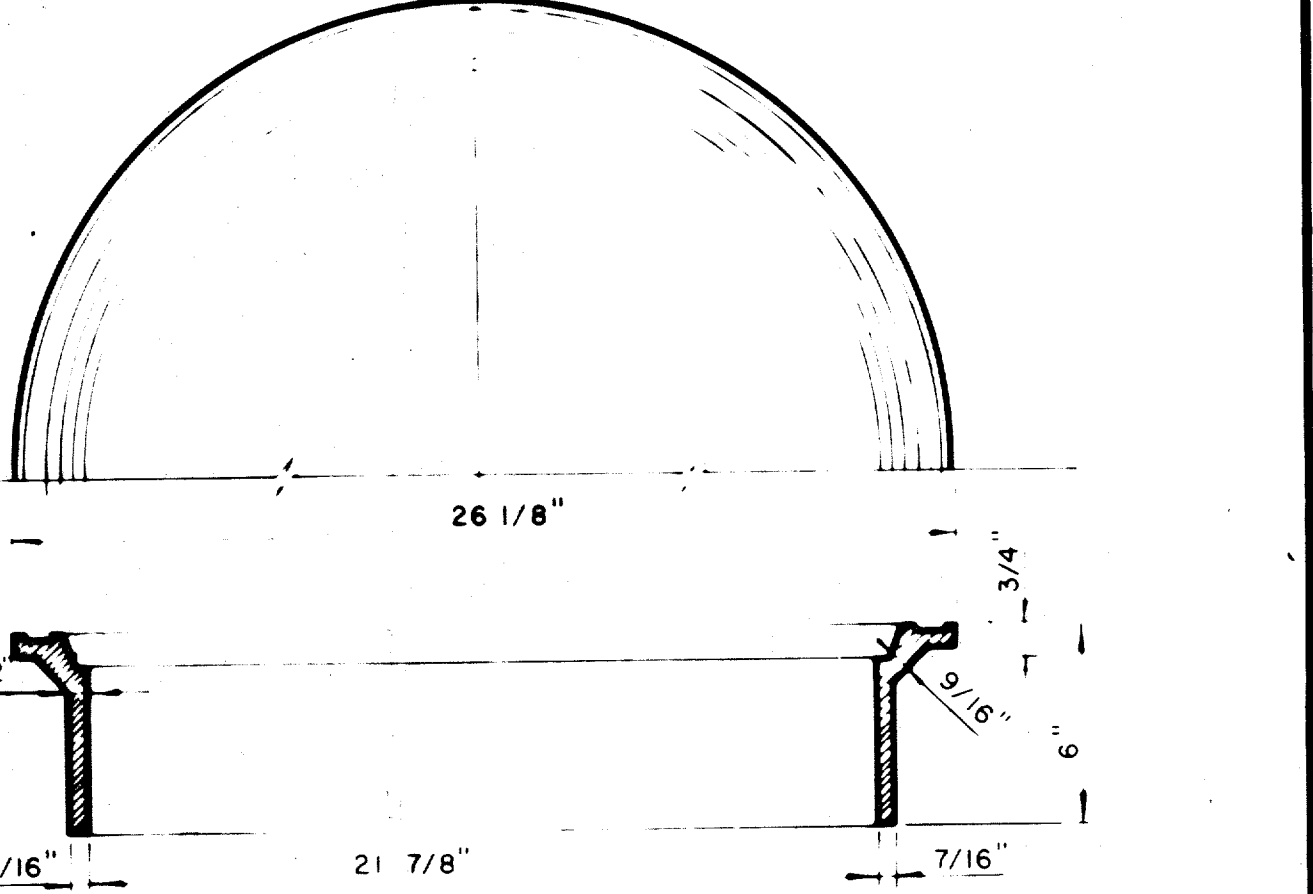


SECTION A-A

36, 48 AND 60 INCH INLETS



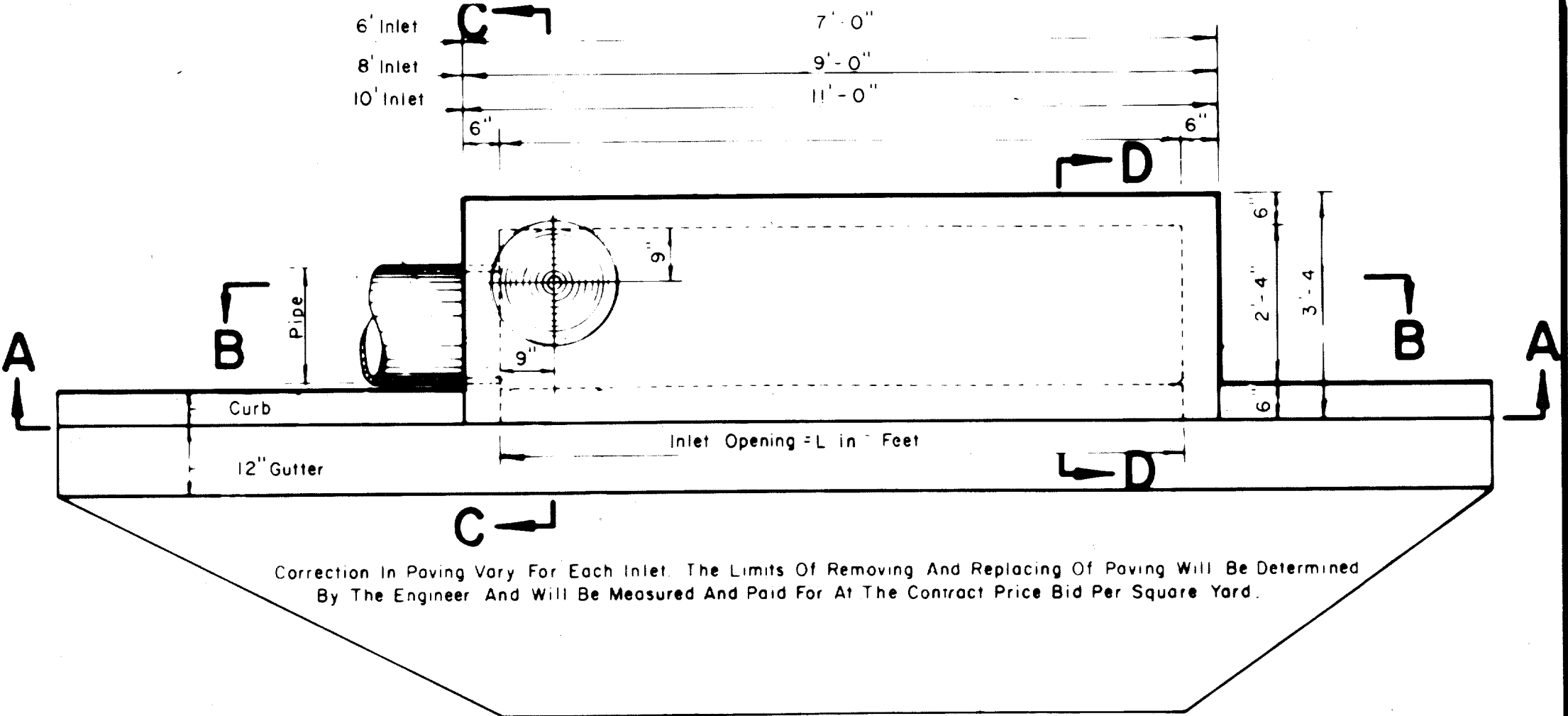
PLAN OF COVER



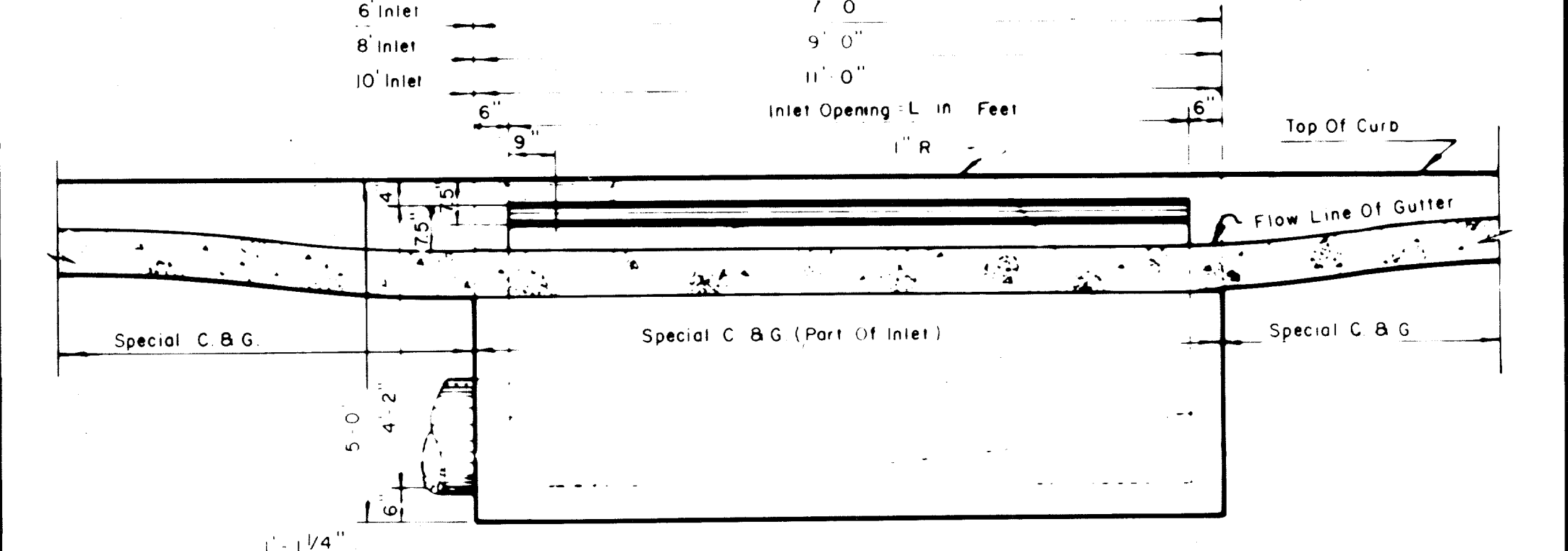
SECTION OF FRAME INLET FRAME AND COVER

Note On 48" And 60" Inlets
The Inlet Frame And Cover
Shall Be At Same End Of
Inlet As Pipe

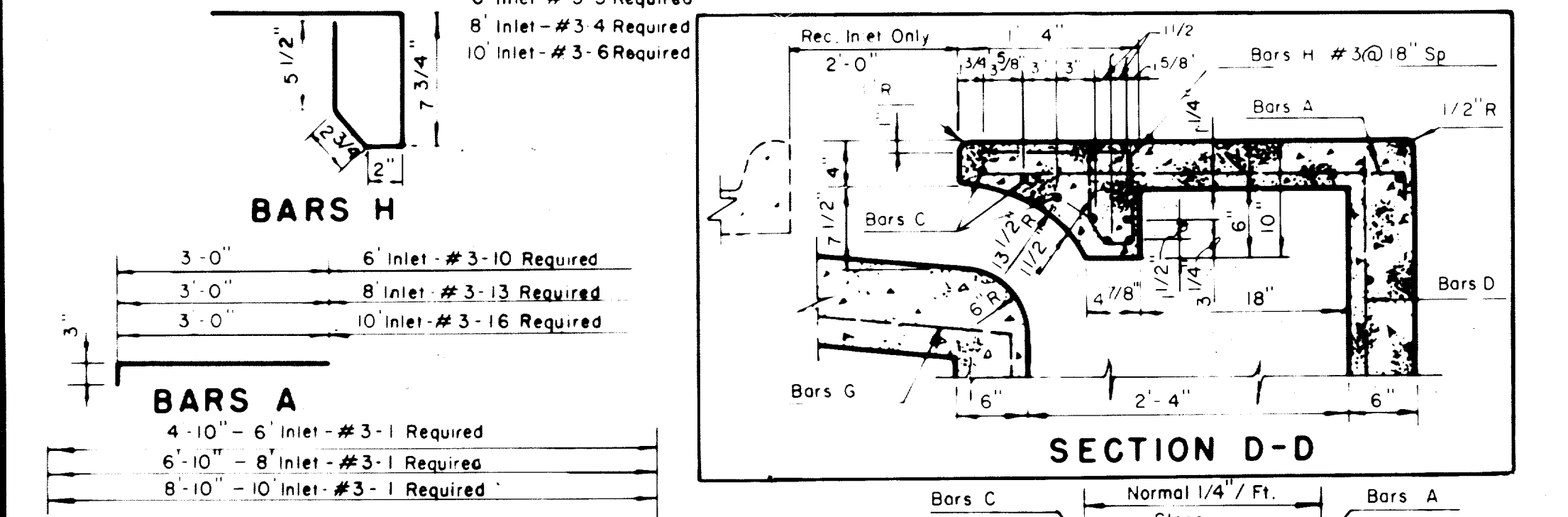
2'-6"	36" Inlet - #5-4 Required
2'-6"	48" Inlet - #5-4 Required
2'-6"	60" Inlet - #5-4 Required
2'-9"	36" Inlet - #5-4 Required
2'-9"	48" Inlet - #5-6 Required
2'-9"	60" Inlet - #5-8 Required
3'-9"	36" Inlet - #5-2 Required
4'-8"	48" Inlet - #5-2 Required
5'-9"	60" Inlet - #5-2 Required
3'-0"	36", 48" & 60" Inlets #3-3 Required



PLAN



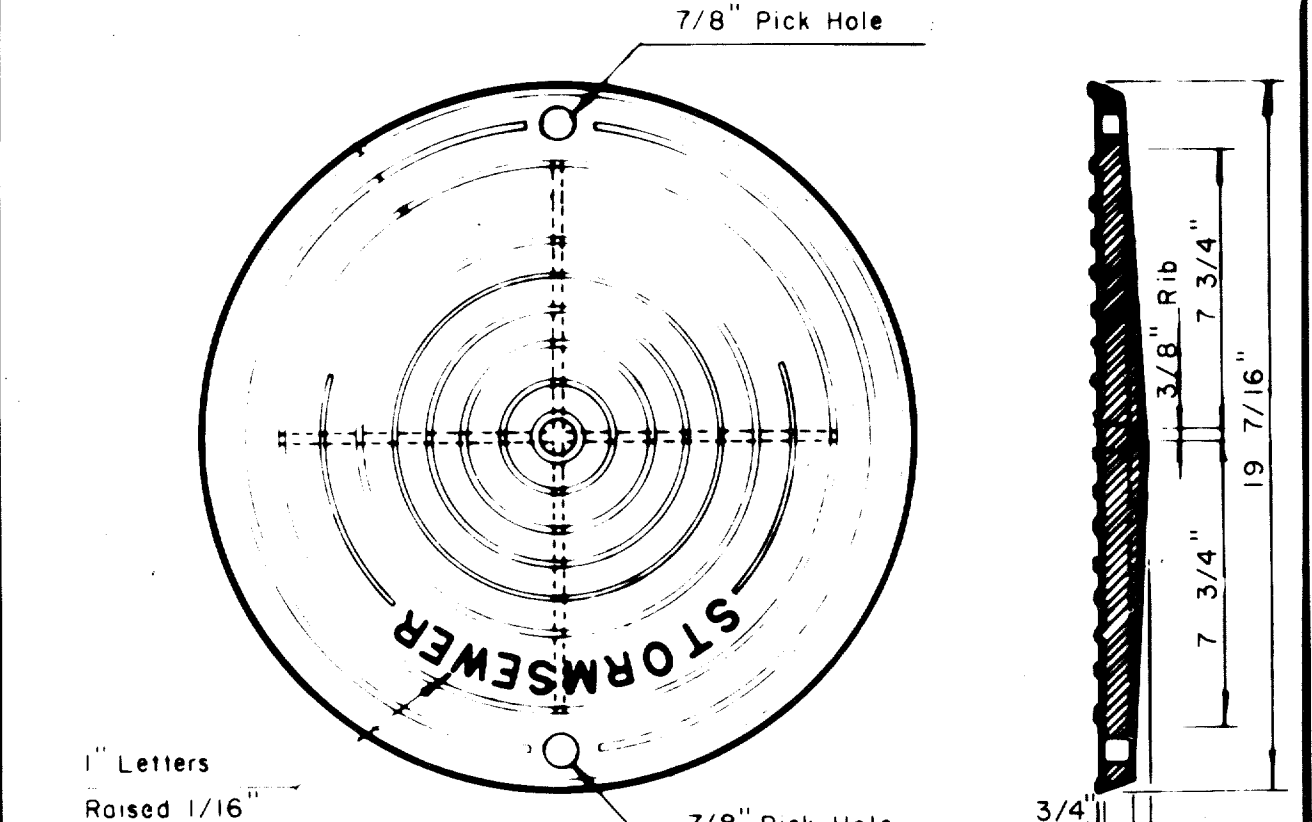
SECTION A-A



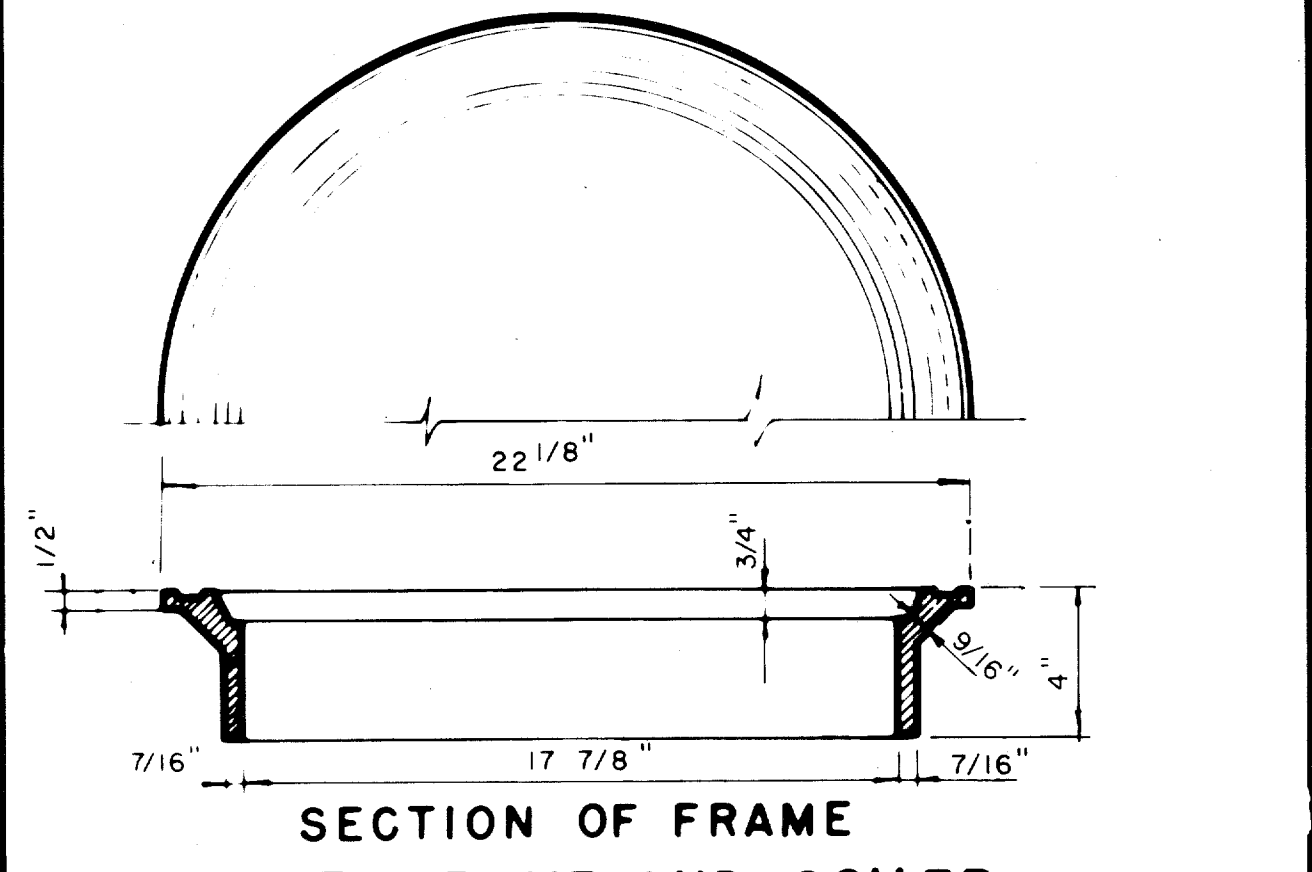
SECTION D-D

3'-0"	6" Inlet - #3-10 Required
3'-0"	8" Inlet - #3-13 Required
3'-0"	10" Inlet - #3-16 Required
4'-10"	6" Inlet - #3-1 Required
6'-10"	8" Inlet - #3-1 Required
8'-10"	10" Inlet - #3-1 Required
6'-8"	6" Inlet - #4-15 Required
8'-8"	8" Inlet - #4-15 Required
10'-8"	10" Inlet - #4-15 Required
4'-8", 6", 8" & 10" Inlet	#4-5 Required
3'-6", 6", 8" & 10" Inlet	#4-1 Required
3'-0", 6", 8" & 10" Inlet	#3-5 Required

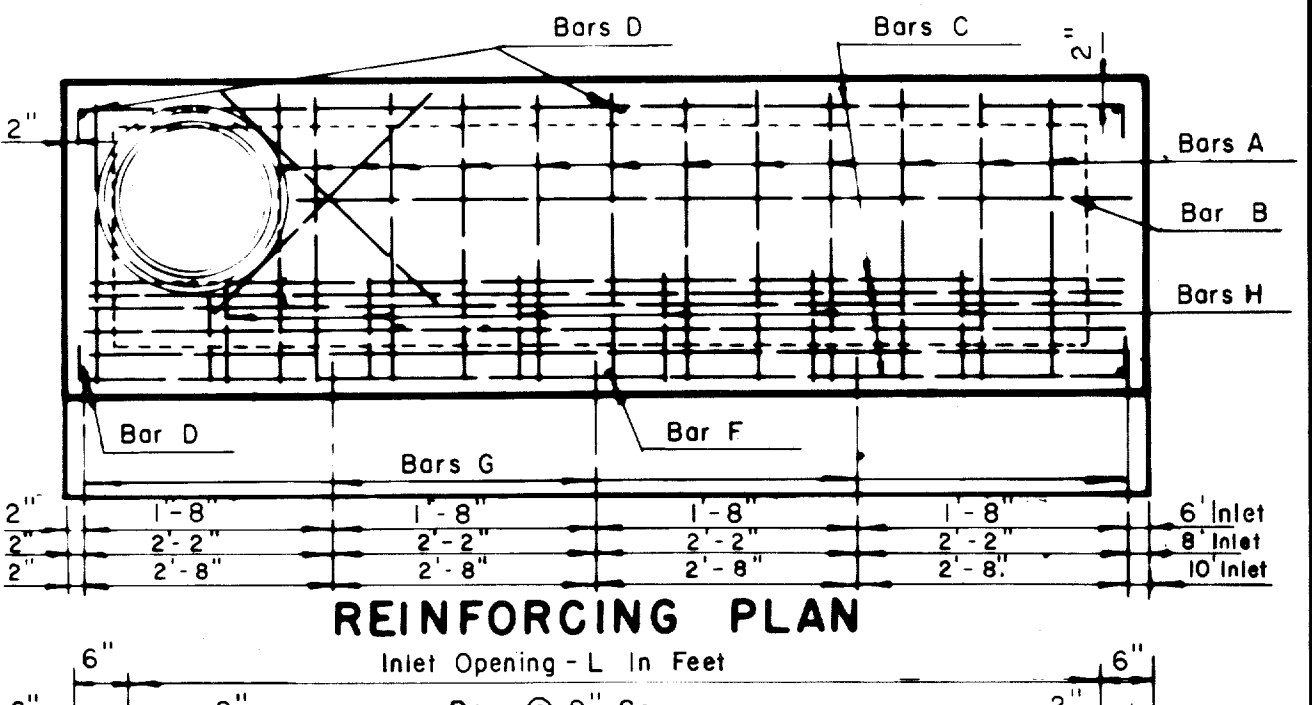
BARS D BARS F BARS G



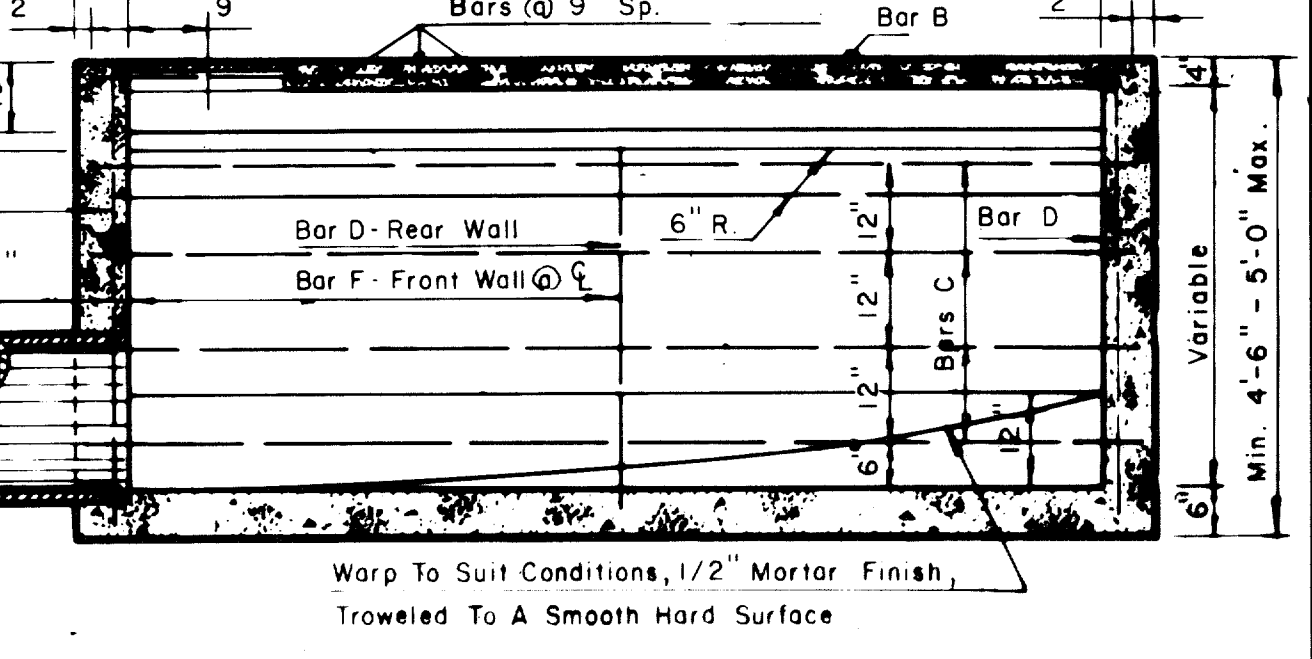
PLAN OF COVER



SECTION OF FRAME INLET FRAME AND COVER



REINFORCING PLAN



SECTION B-B

NOTES:

- Concrete Shall Have A Min. Compressive Of 3,000 P.S.I. At 28 Days.
- Lateral Pipe May Enter Inlet At Any Location. (Field Locate)
- The 12" Gutter In Front Of Inlet Is A Part Of The Inlet And Shall Be Built With The Inlet.
- Top Of Inlet Slope Shall Conform To Adjacent Parkway Normal 1/4" / Ft. Slope.

6, 8 AND 10 FOOT INLETS

STANDARD CURB INLET
36, 48 & 60 INCH INLET
6, 8 & 10 FOOT INLET

"AS BUILT"

CITY OF ADDISON
DALLAS COUNTY, TEXAS
QUORUM DRIVE

DRAINAGE DETAILS A

GINN, INC.
Consulting Engineers - Dallas, Texas

DESIGNED-H.B.J.	DRAWN-S.M.M.	DATE MAY, 1984	JOB NO. J-203
APPROVED-H.W.G.	CHECKED-G.F.	SCALE- NONE	SHEET 35 OF 38