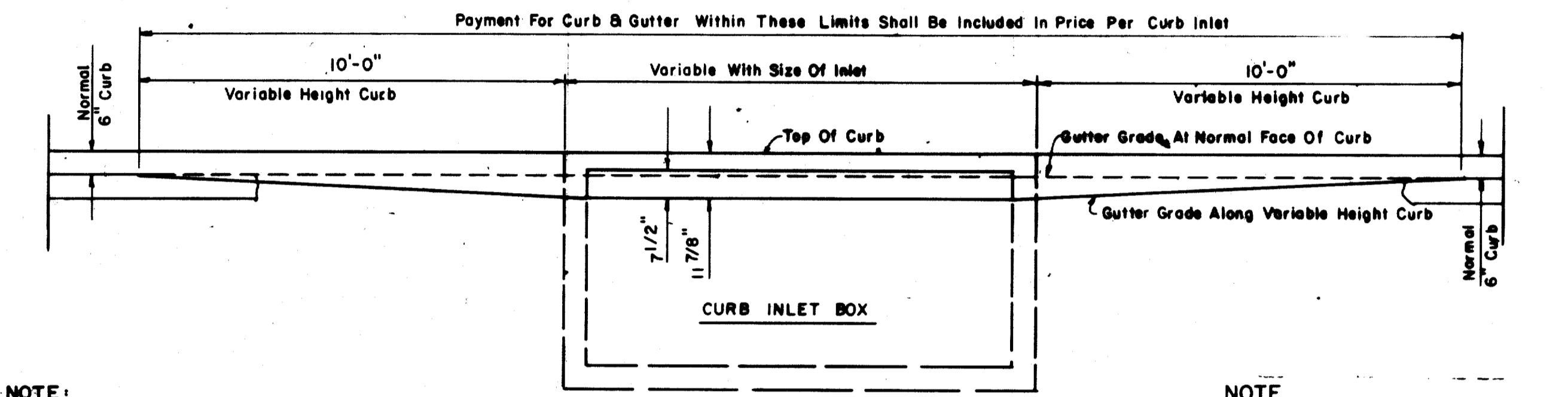


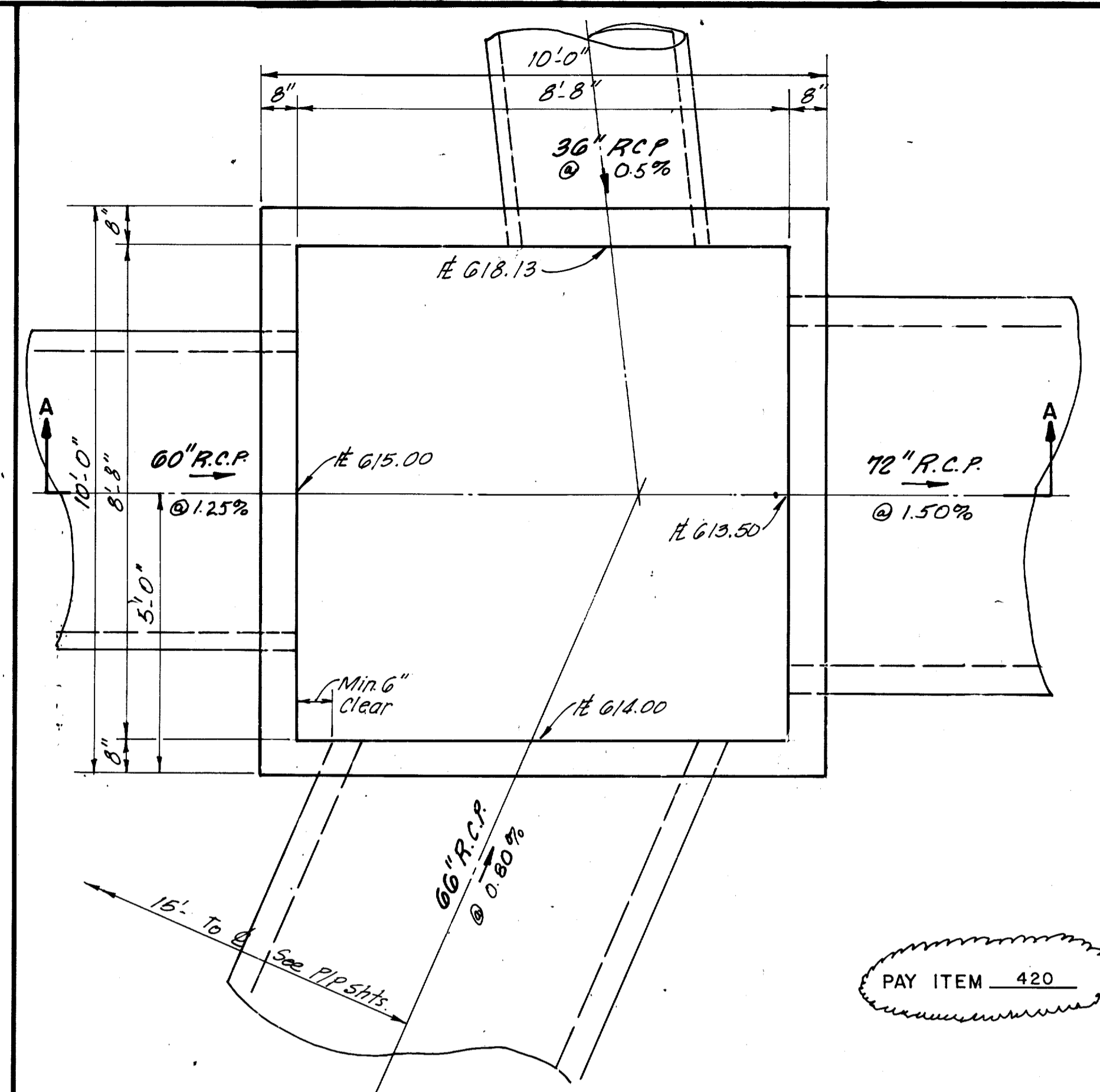
PLAN OF INLET



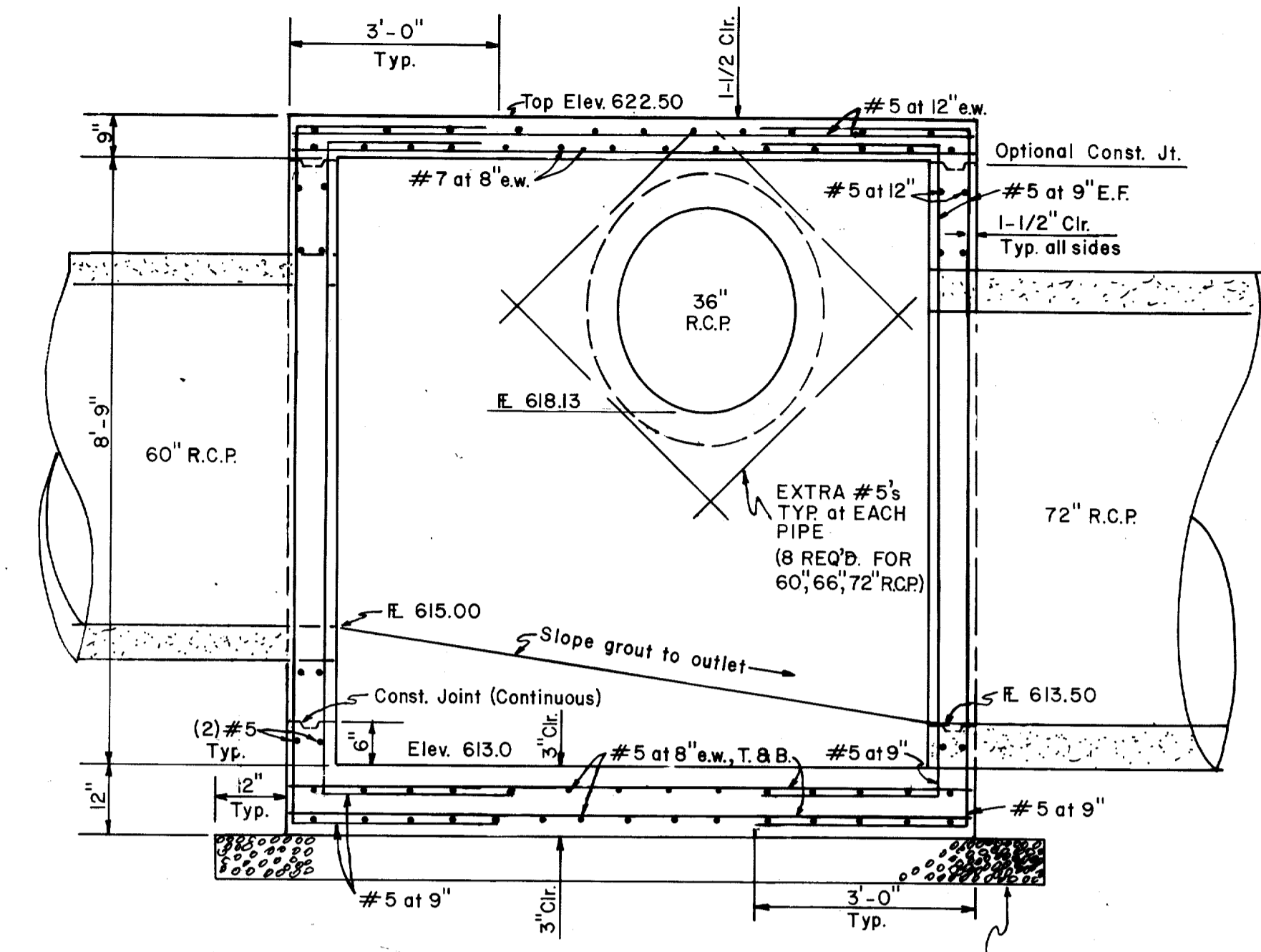
SECTION A-A
RECESSED CURB INLET

NOTE: SEE STD. CURB INLET, DRAINAGE DETAILS FOR SECTION D-D, AND REINFORCING. (ON DRAINAGE DETAIL "A" SMT.)

NOTE: Where inlets are indicated to be modified, refer to plan/profile sheets for elevations or different sizes. All other items shall remain as shown on this standard detail.



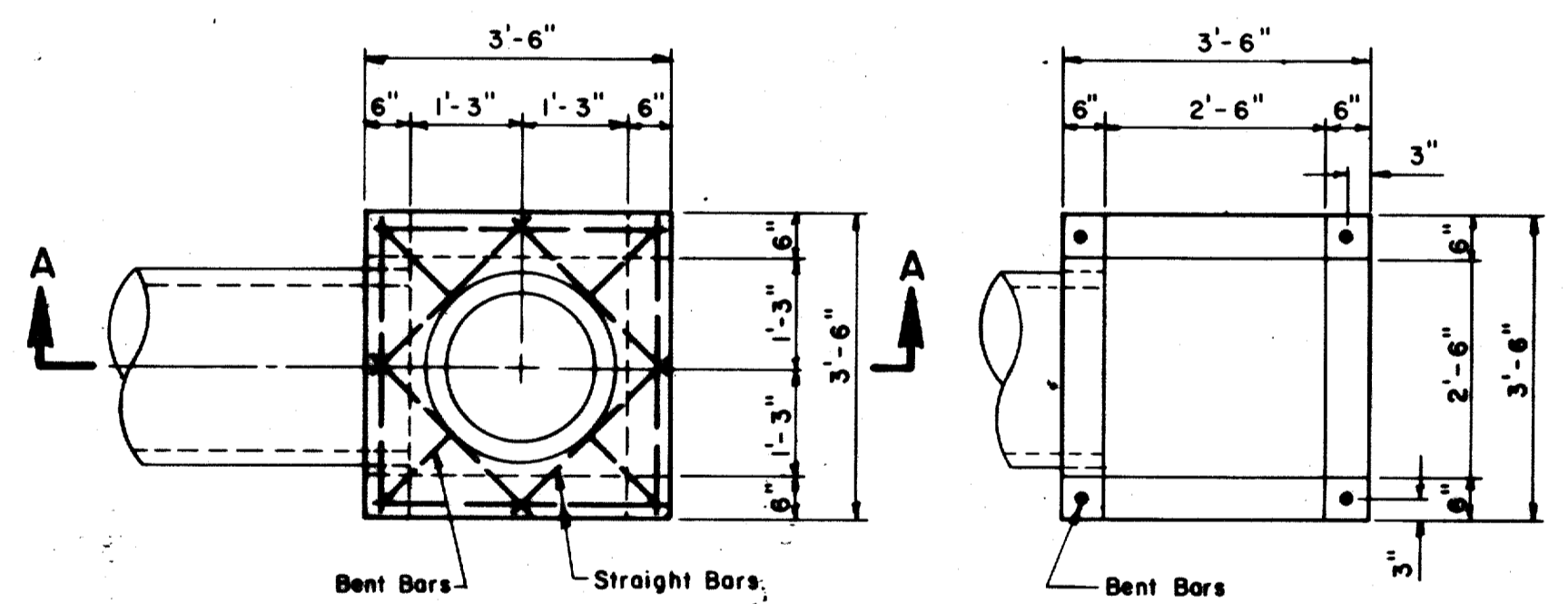
PLAN



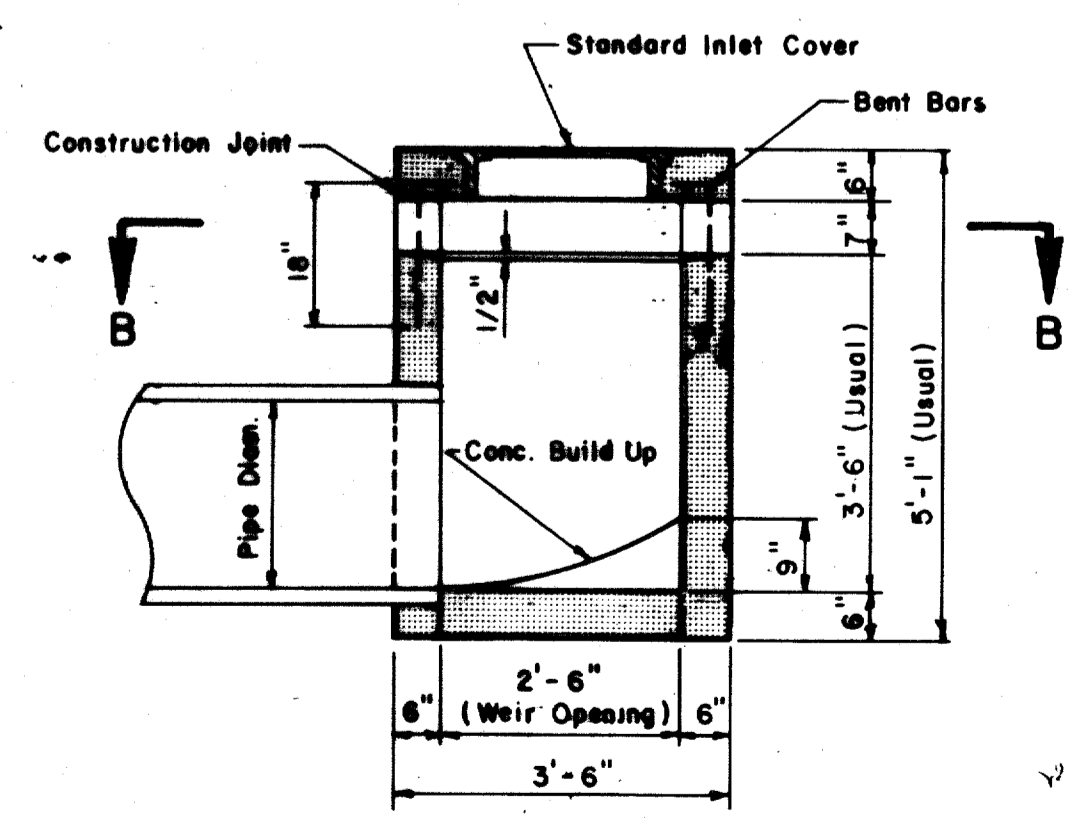
DETAIL - CONCRETE JUNCTION BOX

PAY ITEM 420

OVER EXCAVATE AND BACKFILL AS REQ'D. MIN. 9" THICK CRUSHED STONE BEDDING MAT'L. NOT A SEPARATE PAY ITEM.



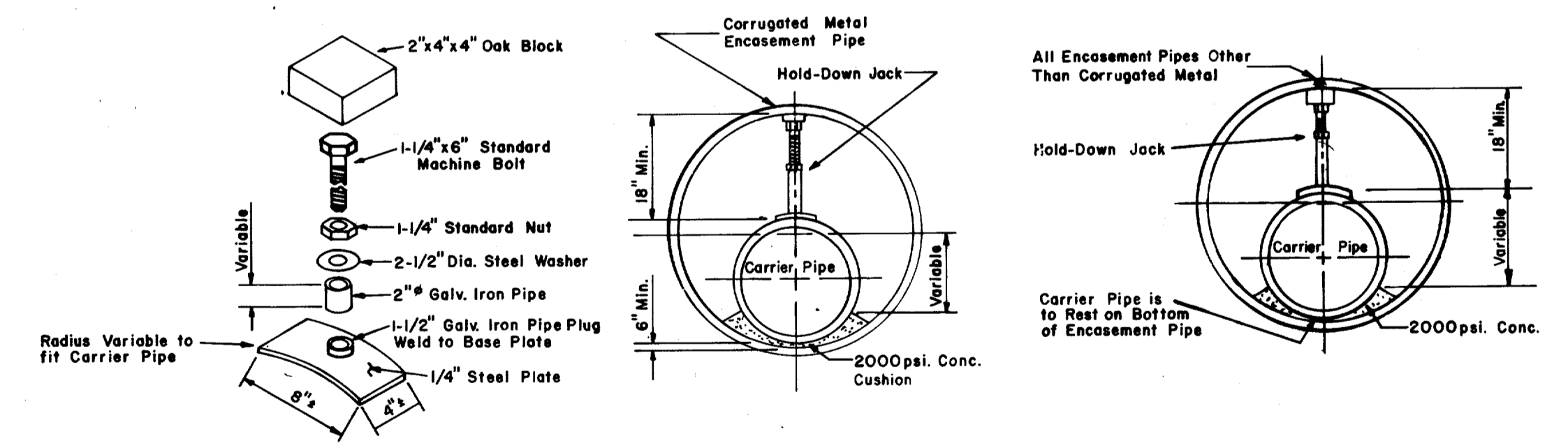
PLAN
SECTION B-B



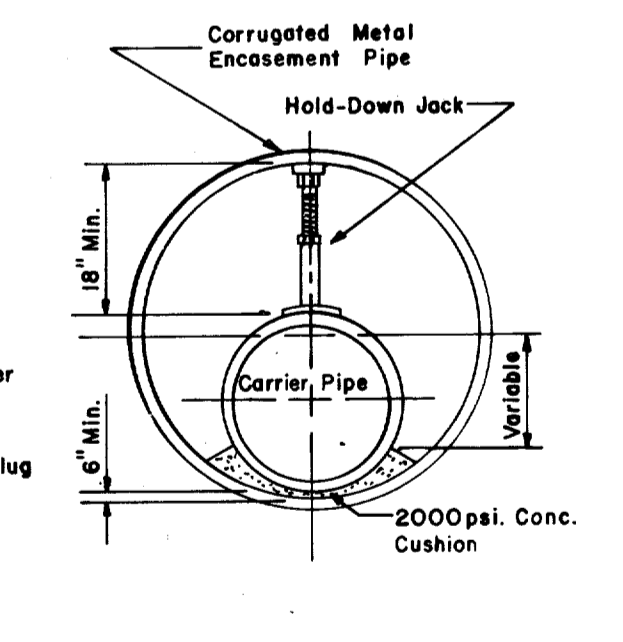
SECTION A-A

STANDARD TYPE "X" & "Y" INLET

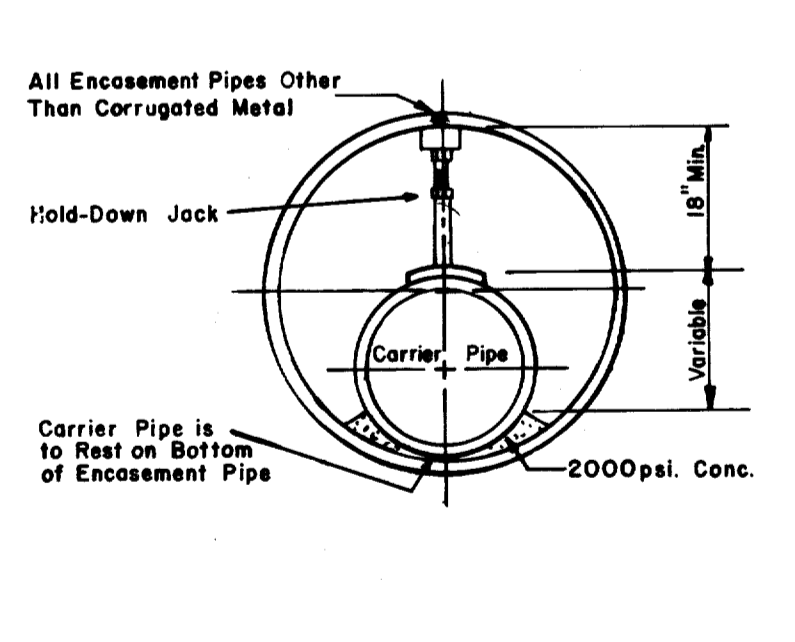
NOTE:
1. ALL REINFORCING SHALL BE #5 BARS.
2. ALL CONC. SHALL BE 3000 P.S.I.
3. TYPE "X" INLET - WEIR OPENING ARE REQUIRED ON 4 SIDES.
4. TYPE "Y" INLET - WIER OPENING ARE REQUIRED ON 3 SIDES.



CONSTRUCTION DETAILS OF HOLD-DOWN JACK



SECTION SHOWING HOLD-DOWN JACKS IN CORRUGATED METAL ENCASEMENT PIPE



SECTION SHOWING HOLD-DOWN JACKS IN REINFORCED CONCRETE ENCASEMENT PIPE

HOLD-DOWN JACKS
MIN. 2 JACKS PER JOINT

GENERAL NOTES

- All concrete shall be Class A, 3000 PSI concrete.
- Reinforcing shall conform to ASTM A-615, Grade 40.
- Provide all necessary reinforcing accessories to hold bars in proper position.
- All reinforcing shall be detailed in accordance with ACI Standard 315.
- Provide corner bars of the same size and number as horizontal bars at all corners.
- Contractor shall submit shop drawings in accordance with ACI Standards, latest edition, for approval prior to any construction being done, showing all information as to exact location, size, number; bending, splicing and placing schedules and lists of reinforcement. No work shall commence on structures until approval of shop drawings is received.
- All labor and materials for construction of junction box shall be included in the unit price bid for the structure. No additional compensation will be allowed.

"AS BUILT"

CITY OF ADDISON
DALLAS COUNTY, TEXAS
QUORUM DRIVE

DRAINAGE DETAILS B

GINN, INC.
Consulting Engineers - Dallas, Texas

DESIGNED - H.K. DRAWN - S.M.M. DATE MAY, 1984 JOB NO. J-203
APPROVED - H.G. CHECKED - G.F. SCALE NONE SHEET 36 OF 38