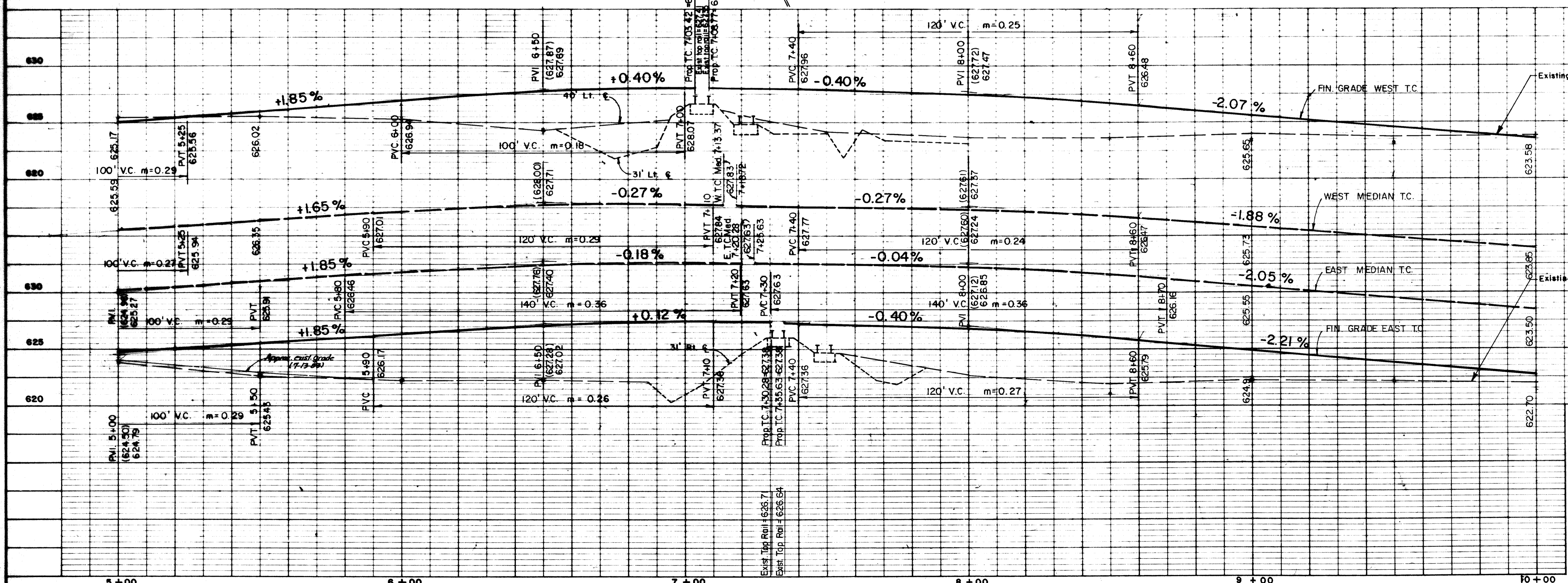


NOTE: SWITCH BOX, SIDE TRACK AND OTHER RAILROAD APPURTENANCES SHALL BE REMOVED OR RELOCATED BY OTHERS

Curve Data
 $\Delta = 6^\circ 52' 23''$
 $R = 1432.39'$
 $L = 171.83'$
 $T = 86.02'$
 $D = 4^\circ 00' 00''$

B.M. R.R. Spike in Telegraph Pole 120' Rt. of Sta. 8 + 18 Elevation 622.54'



"AS BUILT"

No.	Revision	By	Date
CITY OF ADDISON DALLAS COUNTY, TEXAS QUORUM DRIVE			
PAVING - STA. 5+00 to 10+00			
GINN, INC. Consulting Engineers Dallas, Texas			
Designed - GF	Drawn - GF	Date - MAY, 1984	Job No. - J - 203
Approved - WG	Checked - GF	Scale - 1" = 20'	Sheet 5 of 38