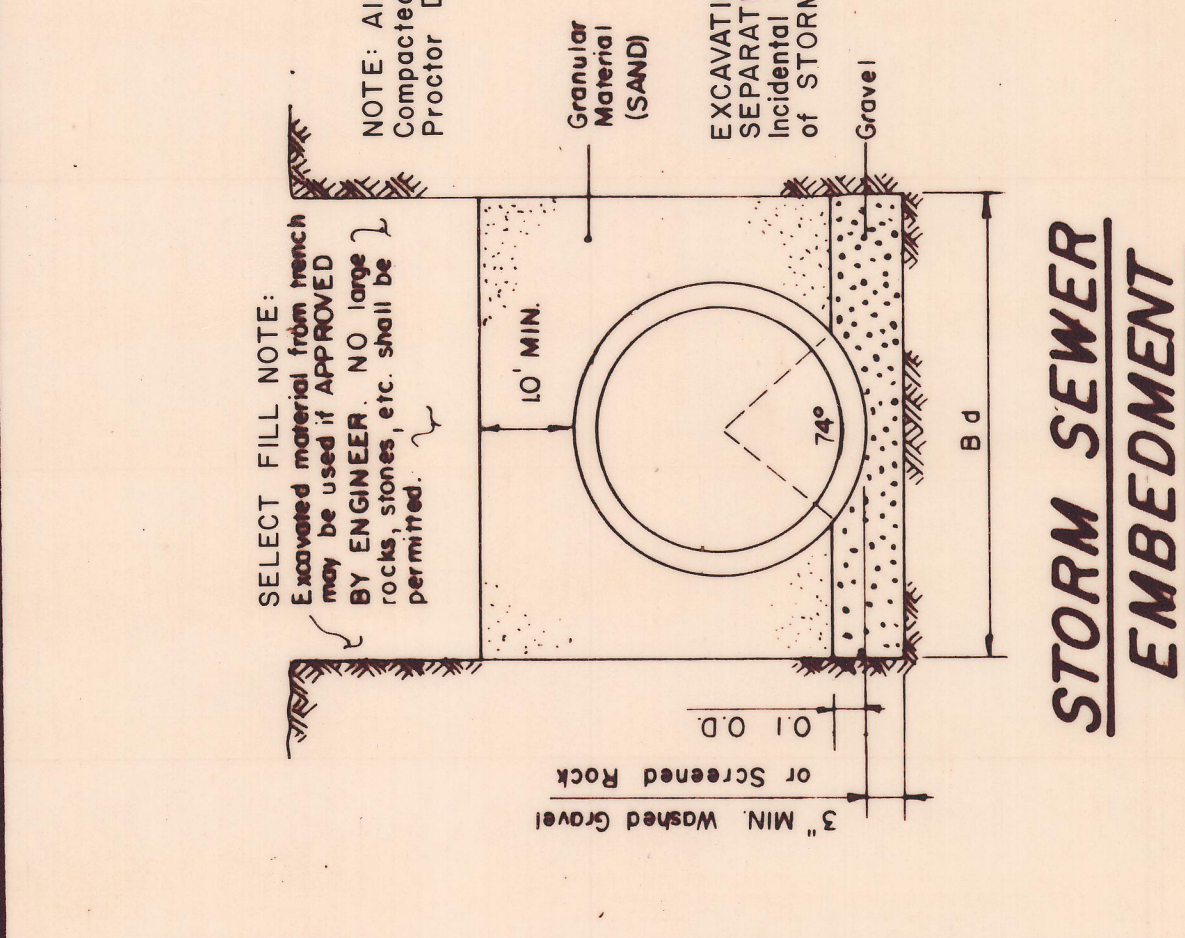
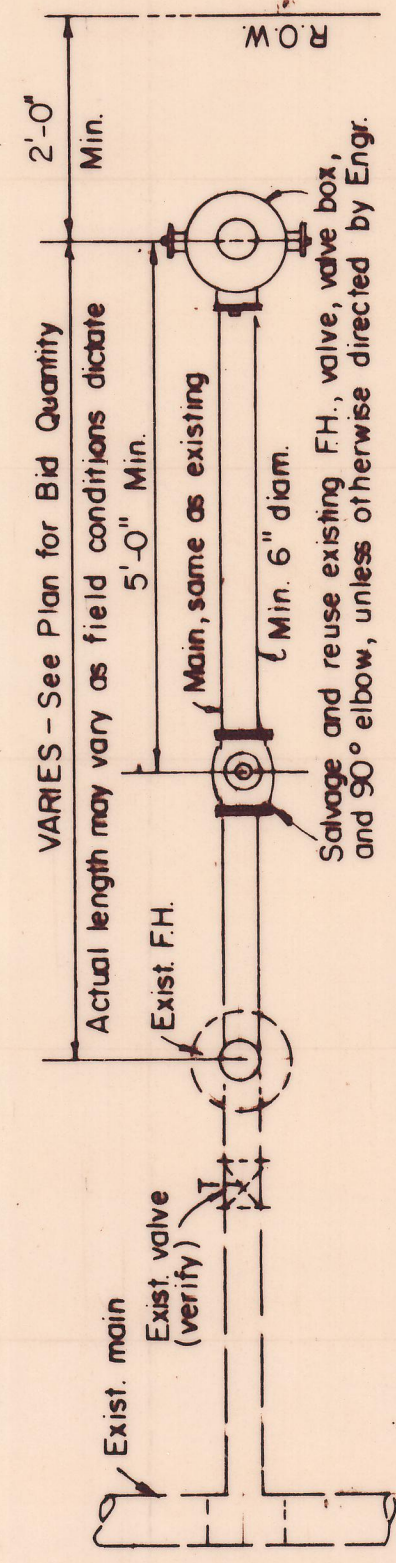


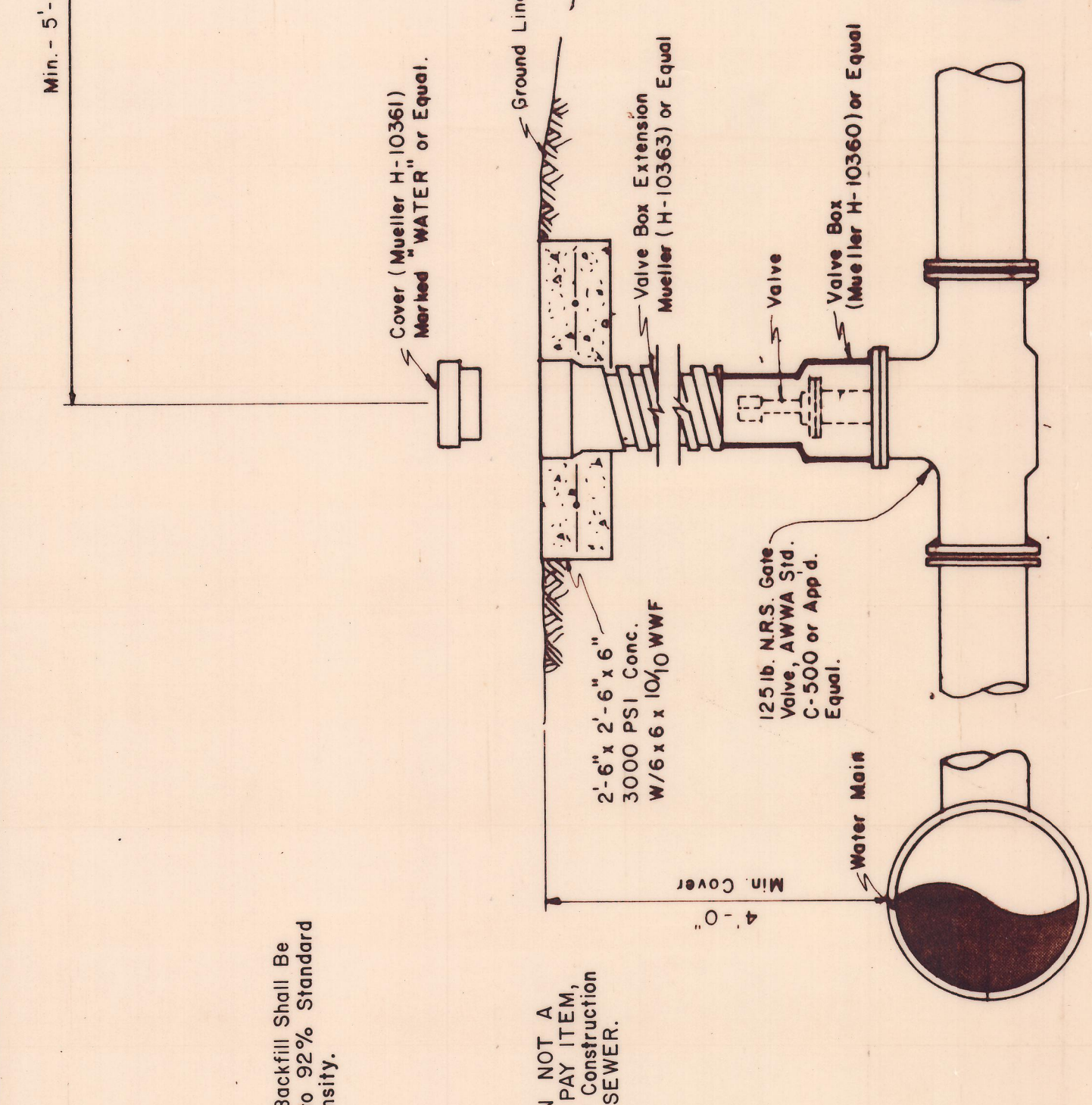
STORM SEWER EMBEDMENT		CU. YDS. PER 100 L.F.
PIPE DIAM.	B _d	GRAVEL
15"	19"	4.53
18"	22.5"	5.13
21"	26"	5.76
24"	29.5"	6.42
27"	33"	7.11
30"	37"	7.85
33"	40.5"	8.59
36"	44"	9.36
39"	47.5"	10.16
42"	51"	10.99
48"	58"	12.72
54"	65"	14.57
60"	72"	16.53
66"	79"	18.60
72"	86"	20.79
78"	93"	23.08
84"	100"	25.49
90"	108"	28.47
96"	114"	30.64
102"	122.5"	34.66
		118.41



STORM SEWER EMBEDMENT

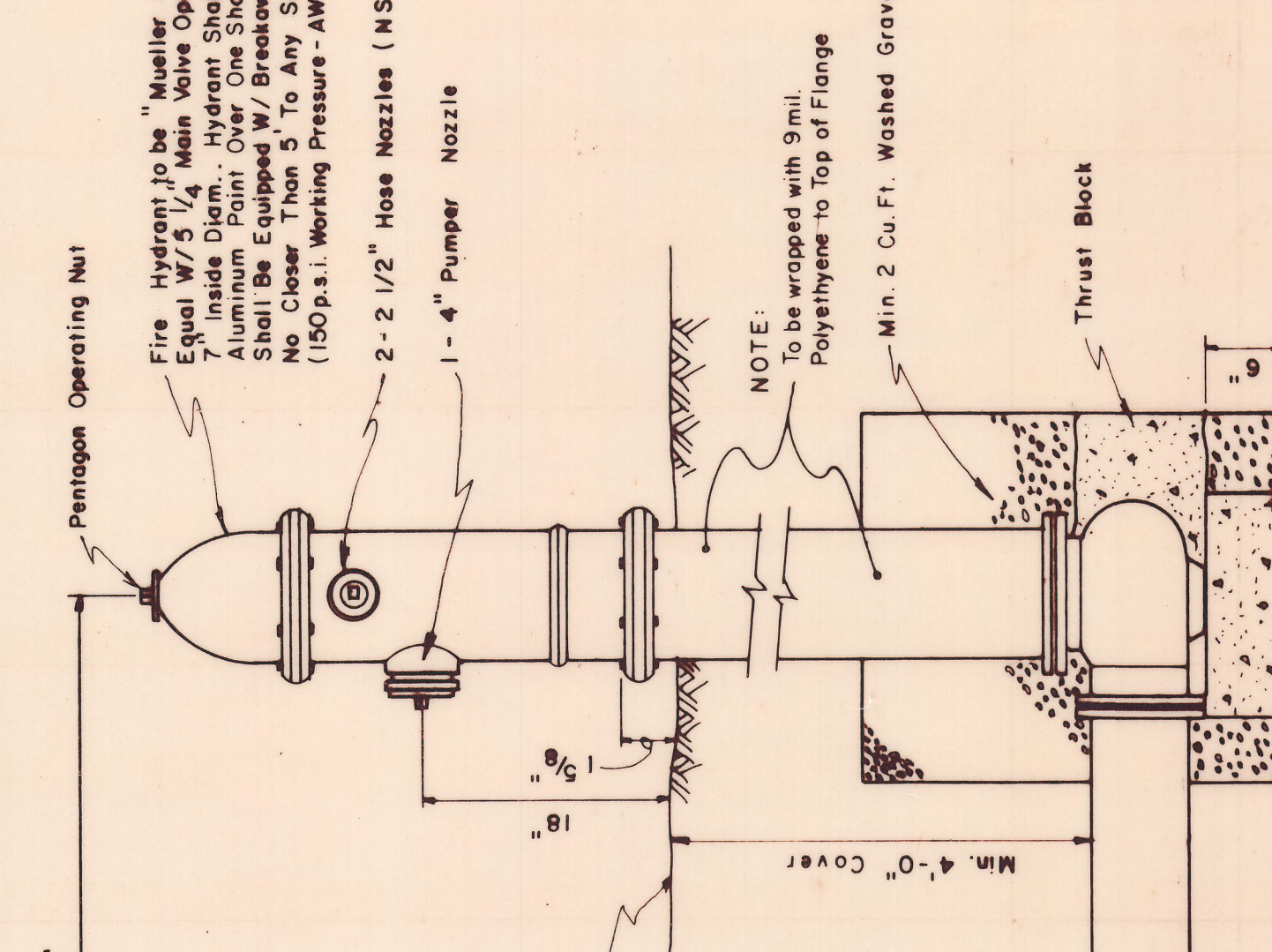


FIRE HYDRANT RELOCATION DETAIL



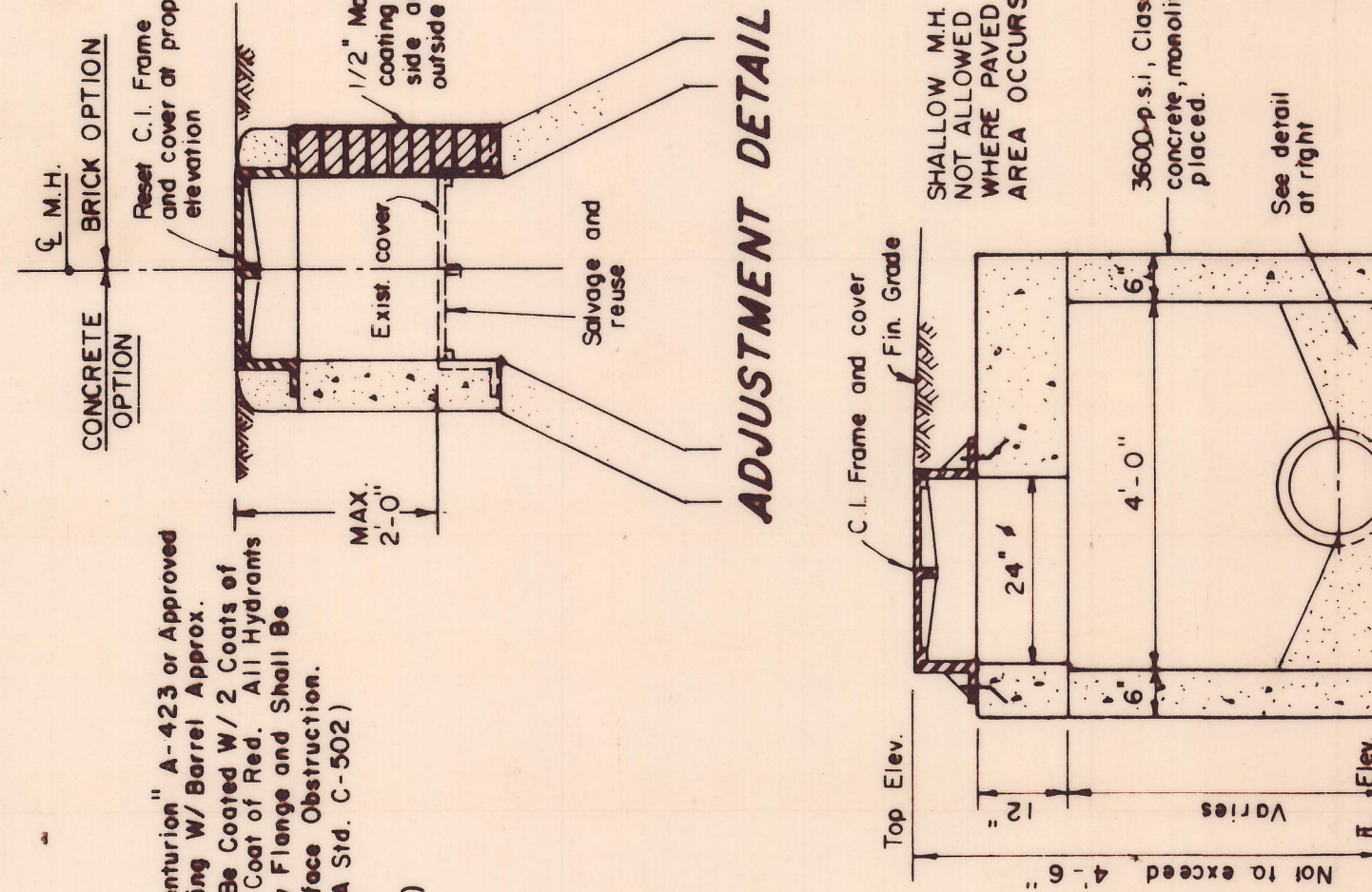
VALVE BOX DETAIL

(See Plans for "Main Size")

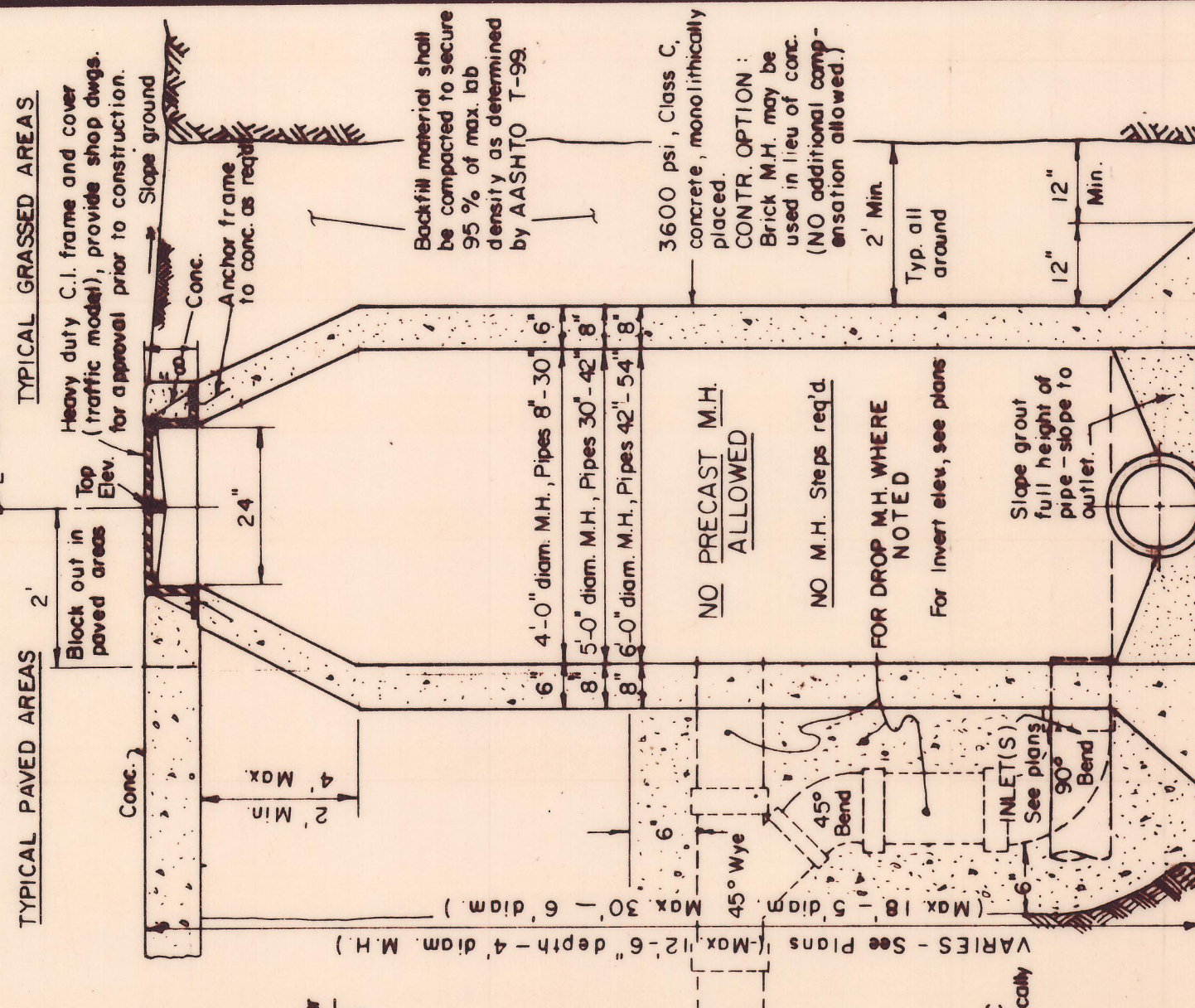


FIRE HYDRANT INSTALLATION

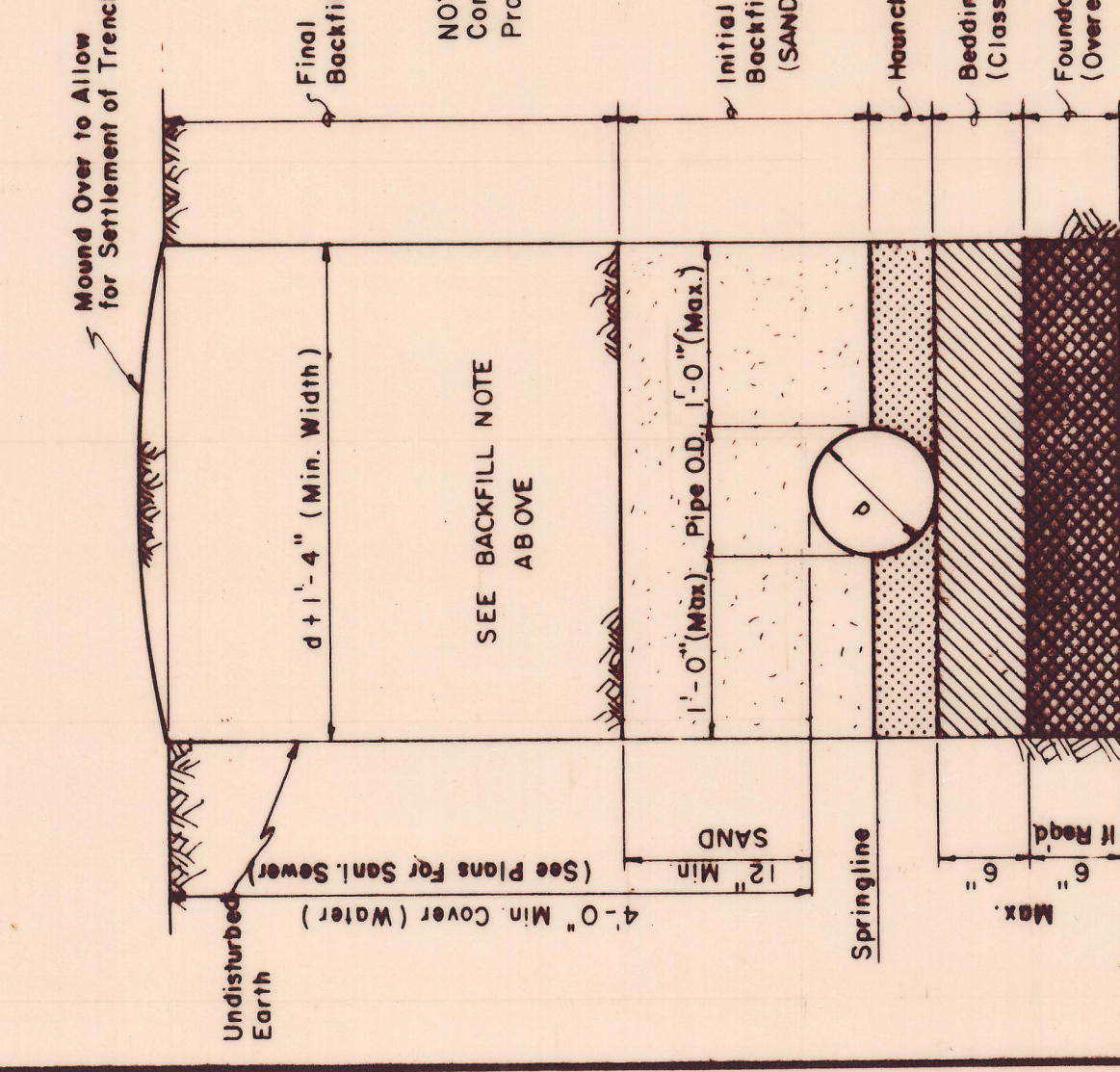
(Includes 6" Valve)



SHALLOW M.H.

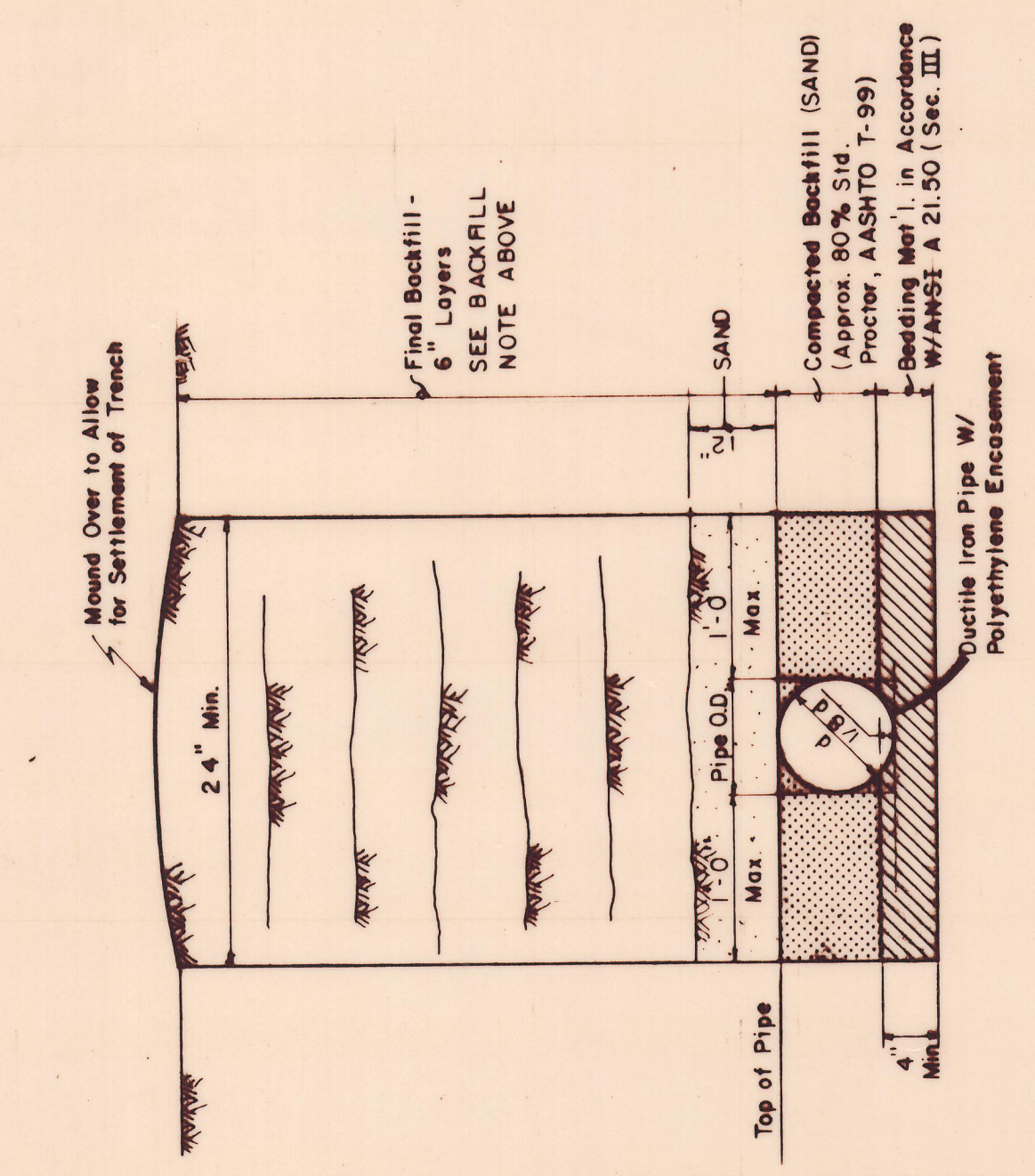


TYPICAL MANHOLE DETAILS



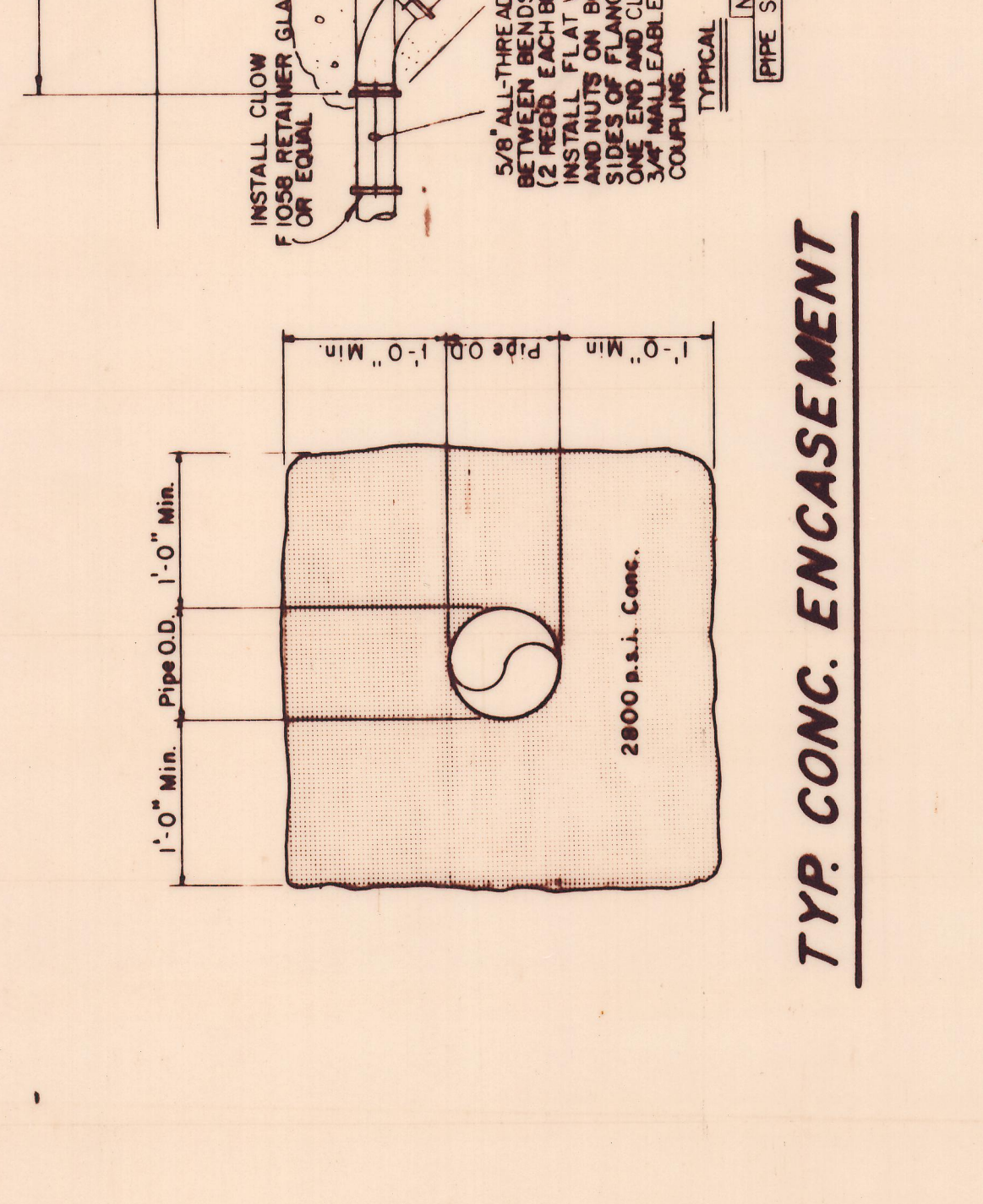
TYP. BACKFILL DETAIL (P.V.C.)

Scale = 1" = 1'-0"

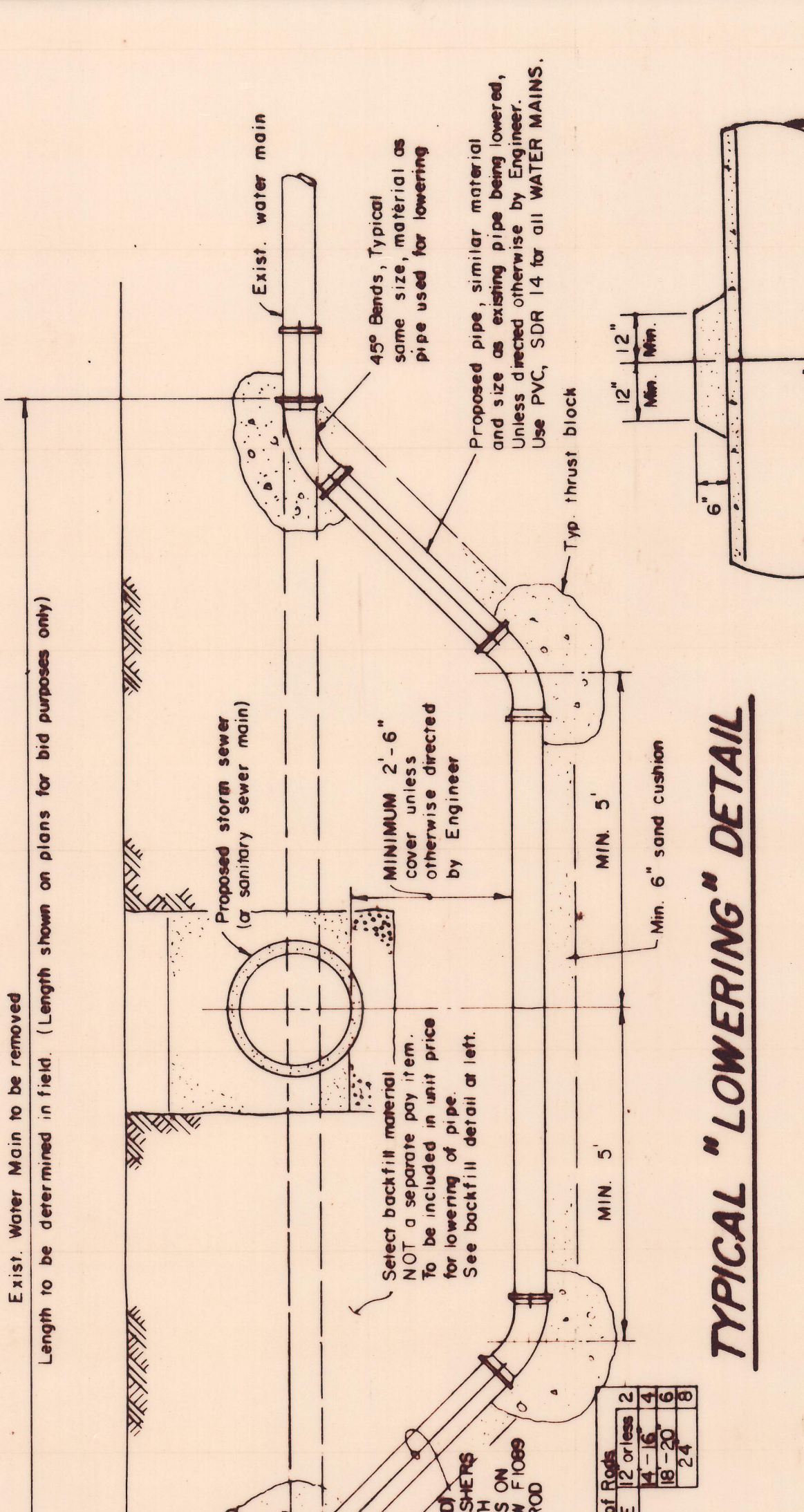


TYP. BACKFILL DETAIL (DUCTILE IRON PIPE)

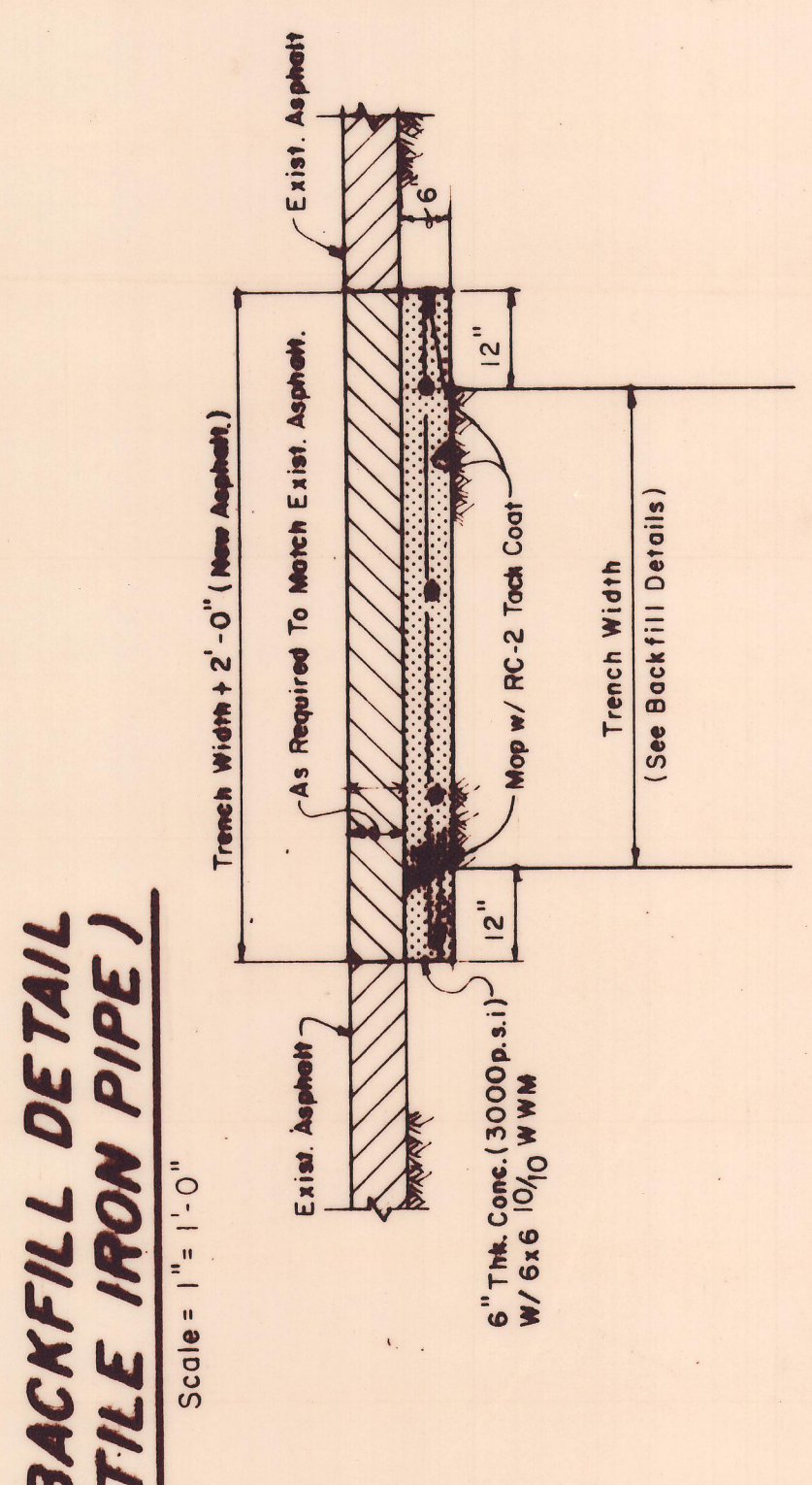
Scale = 1" = 1'-0"



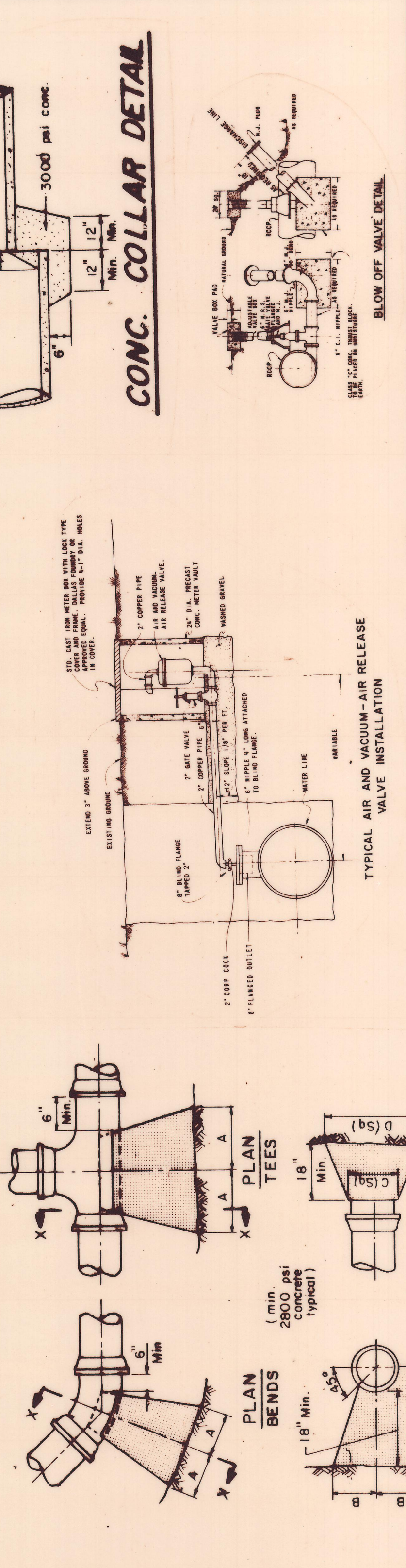
TYP. CONC. ENCASEMENT



TYPICAL "LOWERING" DETAIL



TYP. ASPHALT PAVEMENT REPLACEMENT DETAIL



"AS BUILT"

PLAN & ELEV. PLUGS

SOIL	SIZE	1/4" BEND	1/2" BEND	3/4" BEND	1" BEND	TEE	PLUG
		A	B	C	D	A	B
4000	8"	12"	12"	12"	12"	12"	20"
3500	8"	12"	12"	12"	12"	12"	20"
2500	8"	12"	12"	12"	12"	12"	20"

TYP. CONC. PAVEMENT REPLACEMENT DETAIL

CITY OF ADDISON
DALLAS COUNTY, TEXAS
QUORUM DRIVE

MISC. DETAILS

GINN, INC.
Consulting Engineers - Dallas, Texas

DESIGNED: W.K. DRAWING: S.M.M. DATE: MAY, 1984 JOB NO. J-203
APPROVED: H.W.G. CHECKED: G.F. SCALE: AS SHOWN SHEET 37 OF 38