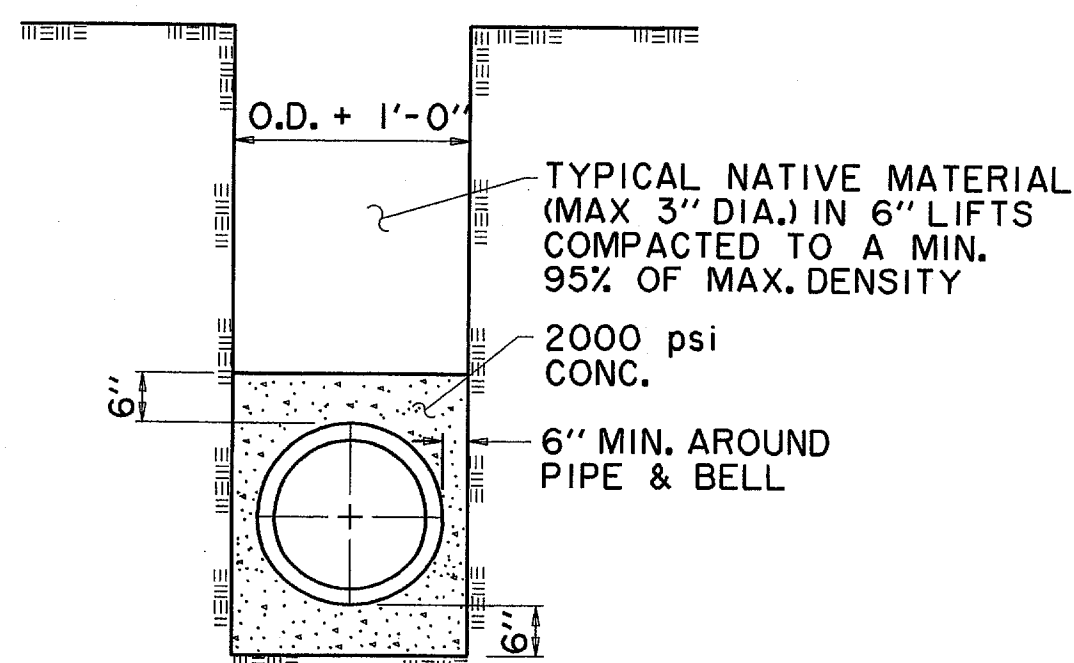


TYPICAL WATER SERVICE DETAIL UP TO 2" METER

N.T.S.

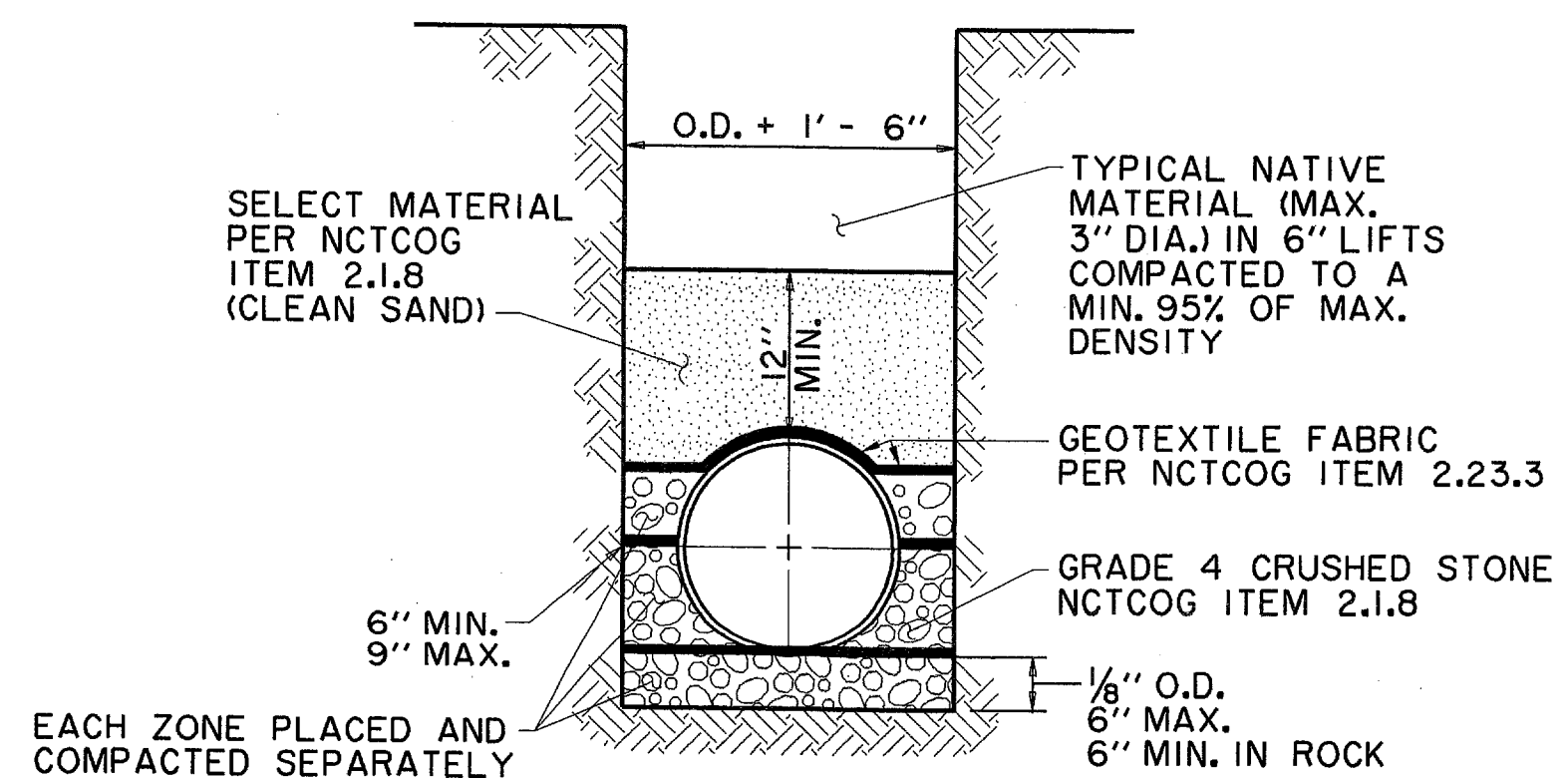
NOTE:

THE TAPPING SADDLE & CORPORATION STOP MUST BE POLY-WRAPPED (8 MIL) & HAND BACKFILLED WITH SAND TO A DEPTH OF 12". CAUTION! INSPECTION MUST BE CALLED FOR & COMPLETED PRIOR TO BACKFILL OR TAP MUST BE RE-EXPOSED BY THE CONTRACTOR FOR INSPECTION BY THE TOWN.



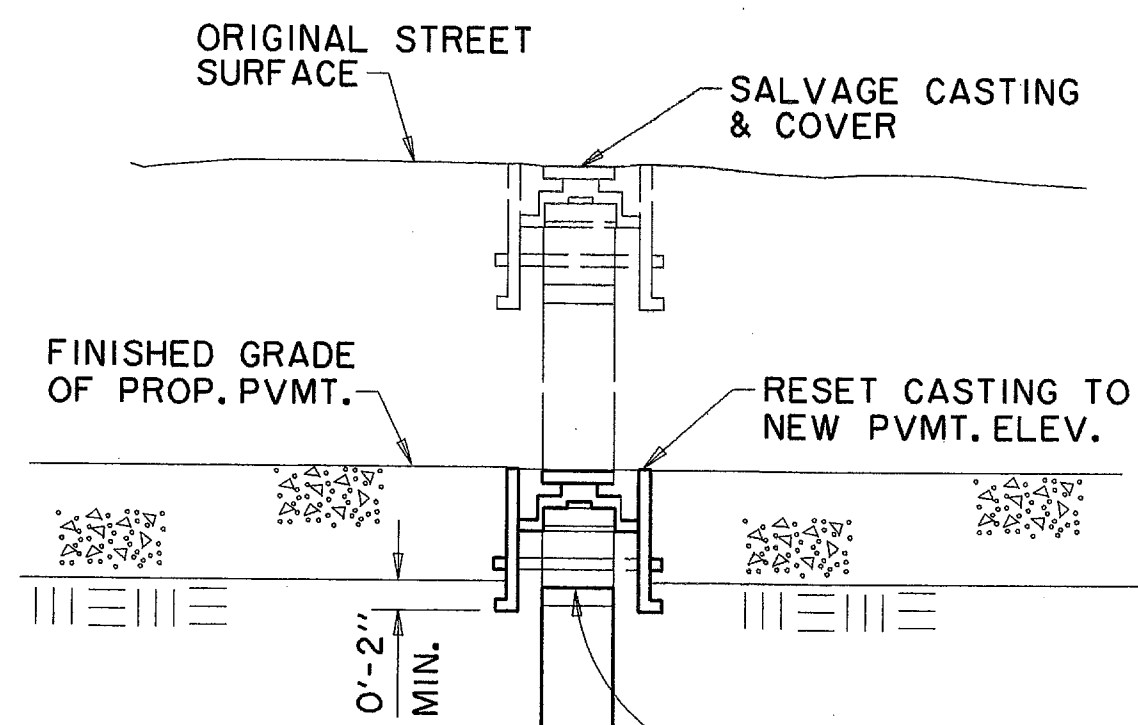
CONC. ENCASEMENT WATER MAIN

N.T.S.



PVC EMBEDMENT

N.T.S.



VALVE COVER & RISER PIPE ADJUSTMENT

N.T.S.

FIRE HYDRANT TO BE "MUELLER" TRAFFIC MODEL W/6" MECHANICAL JOINT CONNECTION OR APPROVED EQUAL W/5/8" VALVE OPENING W/BARREL APPROX. 7" INSIDE DIAMETER. HYDRANT BODY SHALL BE COATED W/2 COATS OF ALUMINUM PAINT OVER TWO COATS OF PRIMER. BONNET TO FLANGE & NOZZLE CAPS SHALL BE PAINTED BY COLOR CODE FOR MAIN SIZE ACCORDING TO CITY STANDARDS. ALL HYDRANTS SHALL BE EQUIPPED WITH A BREAKAWAY FLANGE & SHALL BE NO CLOSER THAN 3' TO ANY SURFACE OBSTRUCTION. (150 psi WORKING PRESSURE - AWWA STD. C-502-73 OR LATEST REVISION) USE "MUELLER CENTURION"

MIN. 3'-0" TO VALVE BOX

ALL BRONZE ONE PIECE PENTAGON OPERATING NUT 1-1/4" FROM POINT TO FLAT & AT LEAST 1/4" IN HEIGHT. VALVE TO OPEN BY TURNING C.C.W.

COVER (MUELLER H-10361) MARKED "WATER" OR EQUAL

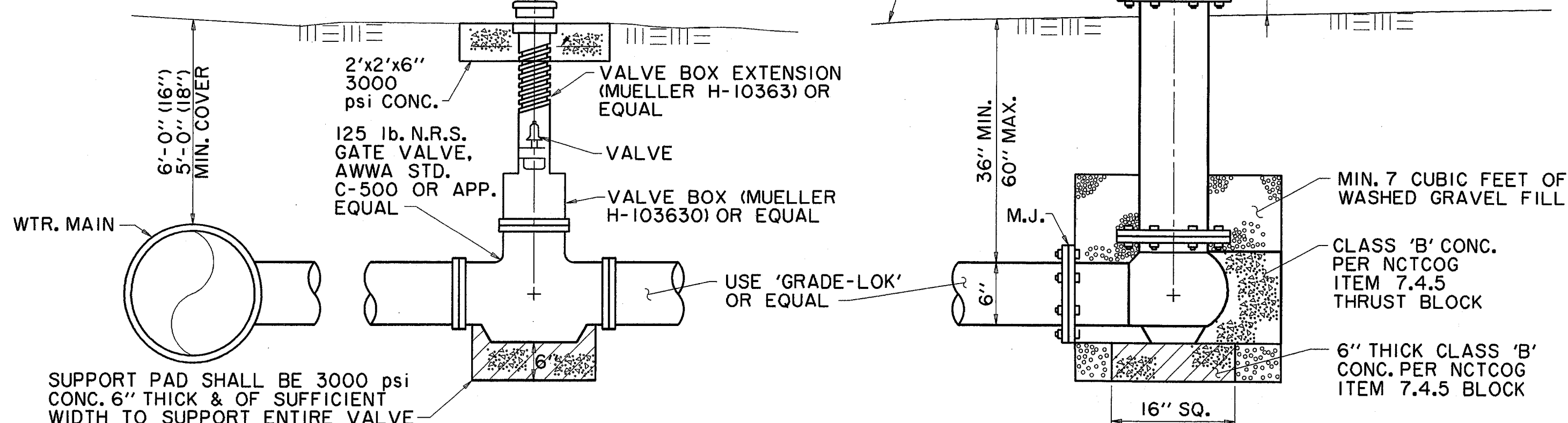
1- 4" PUMPER NOZZLE

2- 2 1/2" NOZZLES (INST)

EX. GROUND

2" MIN. 6" MAX.

HYDRANT VALVES FLANGED TO TEE. MEGA-LUG FOR ALL MECH. JOINT FITTINGS.

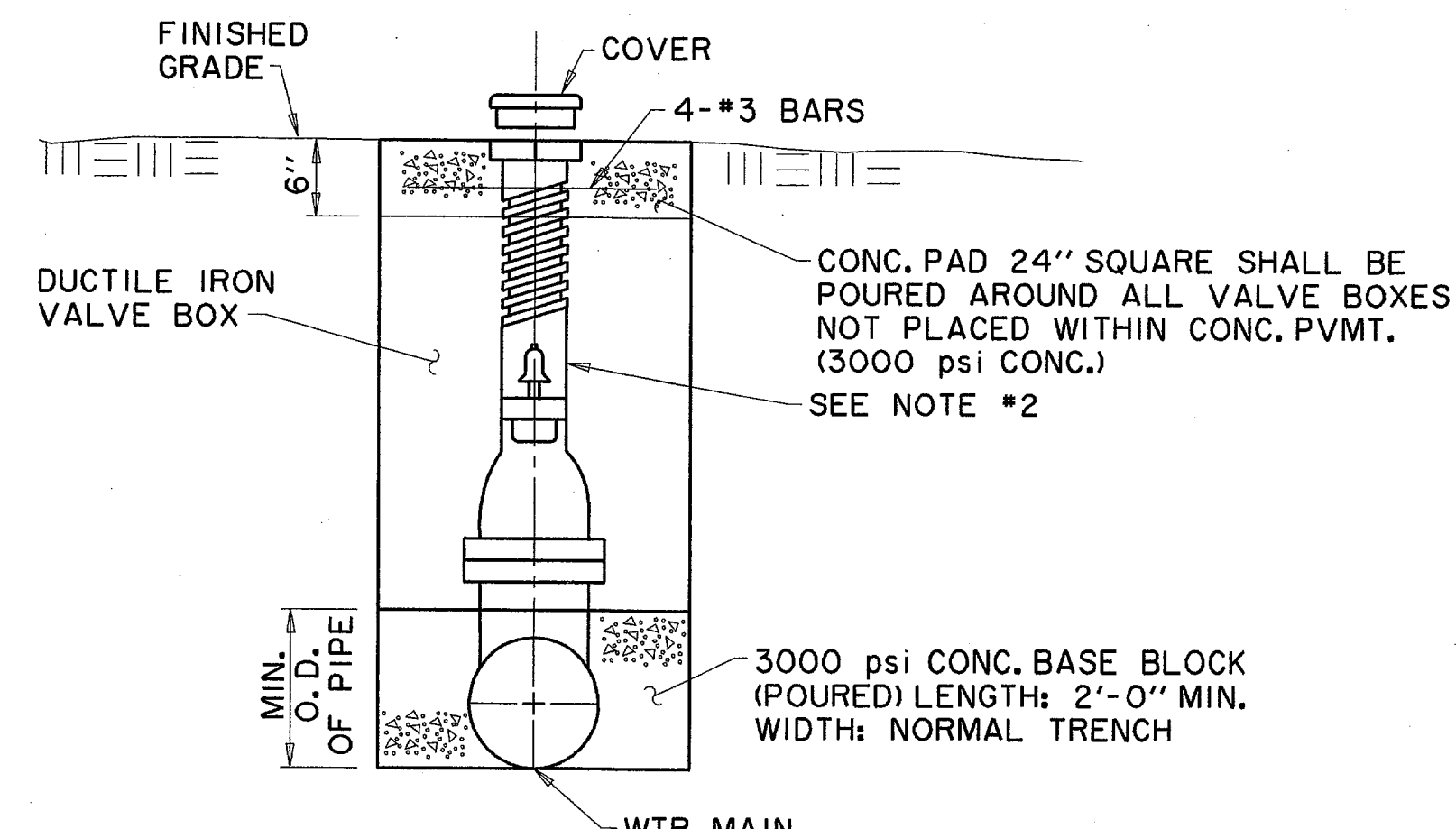


TYPICAL FIRE HYDRANT INSTALLATION

N.T.S.

GENERAL NOTES:

1. C of F.H. BARREL SHALL BE NOT LESS THAN 6.0' OR MORE THAN 9.0' FROM BACK OF CURB OR EDGE OF DRIVING LANE.
2. DO NOT SET F.H. IN AN EXISTING OR PROPOSED SIDEWALK, UNLESS OTHERWISE NOTED.
3. ALL F.H. TEES SHALL BE FLANGED TEE WITH ANCHORING ON THE BRANCH WITH FLANGED X M.J., M.J. 6' VALVE. RESTRAINING GLANDS EBAA SERIES 2000 OR EQUAL.
4. SET F.H. ON THE LOT LINE EXTENDED WHEN POSSIBLE. (NOT APPLICABLE TO THIS PROJECT)
5. SEE SPECIFICATION FH-95-1 FOR ADDITIONAL REQUIREMENTS.

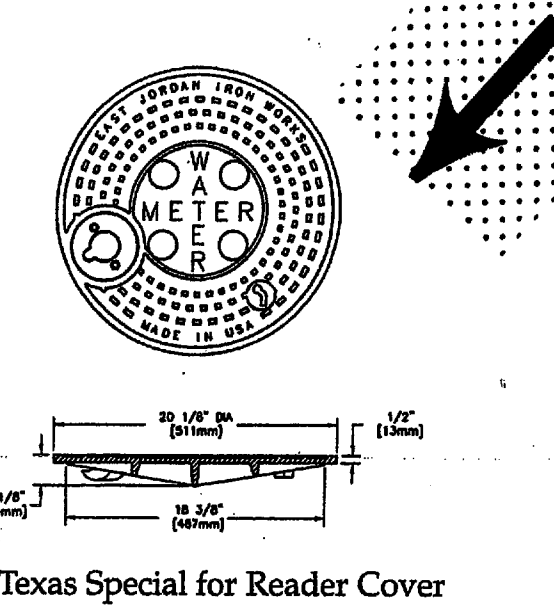


TYPICAL VALVE SETTING & BOX

N.T.S.

NOTES:

1. GATE VALVES SHALL BE IN ACCORDANCE WITH AWWA STANDARD C-509-80 OR LATEST THEREOF. ALL VALVES SHALL BE "MUELLER" OR APPROVED EQUAL.
2. A PERMANENTLY ATTACHED VALVE EXTENSION STEM SHALL BE REQUIRED FOR ANY VALVE ON WHICH THE OPERATING NUT IS LOCATED IN EXCESS OF 4 FEET BELOW THE TOP OF VALVE BOX. THIS EXTENSION SHALL BE OF SUFFICIENT LENGTH TO INSURE THAT ITS TOP IS WITHIN 4' OF VALVE BOX LID. MANUFACTURED VALVE STACK DUCTILE IRON PIPE TO BE USED FOR EXTENSION GREATER THAN 4'-0". BELL END OF STACK TO BE FITTED OVER VALVE. VALVE AND VALVE STACK IS TO BE POLY WRAPPED.
3. VALVES SHALL BE OF DUCTILE IRON W/RUBBER ENCAPSULATED DISK. BOLTS SHALL BE STAINLESS STEEL OF SAME SIZE ON EACH VALVE.
4. ALL WATER COVERS SHALL BE MARKED "WATER".



#5 Texas Special for Reader Cover

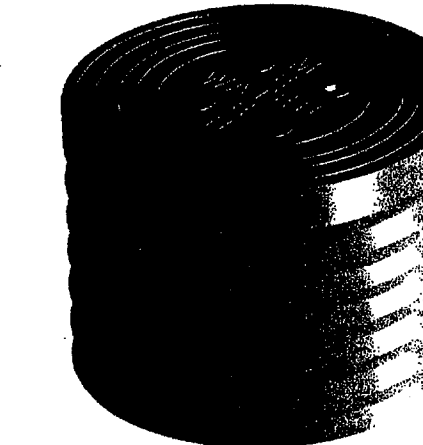
GALVANIZED METER BOX WITH CAST IRON RINGS & COVERS

For 3/8" METERS

MIN. Dia	Height	Can Weight	Total Weight
14"	20mm	10 lbs.	29 lbs.
16"	45mm	13 lbs.	42 lbs.
20"	50mm	14 lbs.	43 lbs.
24"	61mm	17 lbs.	46 lbs.
30"	78mm	21 lbs.	50 lbs.
36"	91mm	27 lbs.	56 lbs.
42"	107mm	31 lbs.	60 lbs.
48"	121mm	36 lbs.	64 lbs.
60"	152mm	43 lbs.	72 lbs.
72"	182mm	51 lbs.	80 lbs.

18" Diameter Meter Can with 12 1/8" Covers & Rings

Available with locking, drop-in or touch reader lids

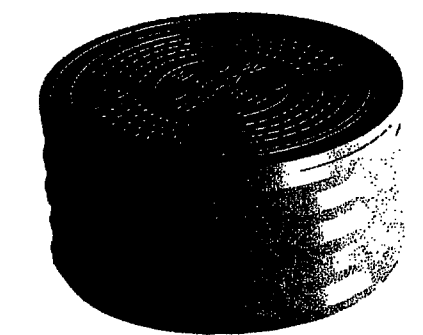


For 1" METERS

MIN. Dia	Height	Can Weight	Total Weight
14"	38mm	14 lbs.	45 lbs.
16"	45mm	17 lbs.	48 lbs.
20"	61mm	23 lbs.	54 lbs.
24"	78mm	28 lbs.	59 lbs.
30"	94mm	33 lbs.	64 lbs.
36"	107mm	43 lbs.	74 lbs.
42"	121mm	48 lbs.	79 lbs.
48"	137mm	57 lbs.	88 lbs.
60"	152mm	72 lbs.	104 lbs.

24" Diameter Meter Can with 20 1/8" Covers & Rings

Available with locking or touch reader lids

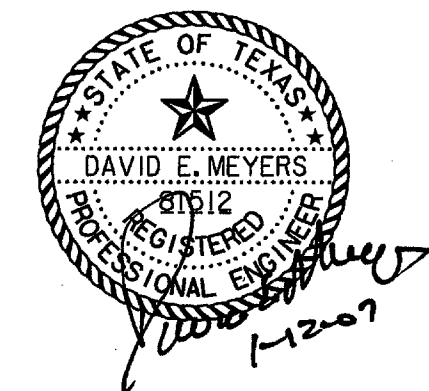
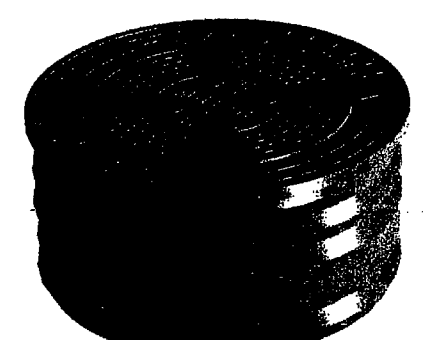


For 1.5-2" METERS

MIN. Dia	Height	Can Weight	Total Weight
14"	56mm	16 lbs.	52 lbs.
16"	45mm	17 lbs.	53 lbs.
20"	61mm	23 lbs.	59 lbs.
24"	78mm	28 lbs.	64 lbs.
30"	94mm	33 lbs.	69 lbs.
36"	107mm	43 lbs.	79 lbs.
42"	121mm	48 lbs.	84 lbs.
48"	137mm	57 lbs.	93 lbs.
60"	152mm	72 lbs.	109 lbs.

28" Diameter Meter Can with 20 1/8" Covers & Rings

Available with locking or touch reader lids



DATE	DESCRIPTION	REF. NO.

WATER DETAILS QUORUM DRIVE

TOWN OF ADDISON, TEXAS

HUIH - Zellers, Inc. 313 McKinney Ave., Suite 600, Dallas, TX 75204 Phone (214) 971-3311/Fax (214) 871-0757

DESIGN	CHECKED	APPR.	SCALE	DATE	PROJECT NO.	NO.
HZI	HZI	N.T.S.	01/12/07			C15