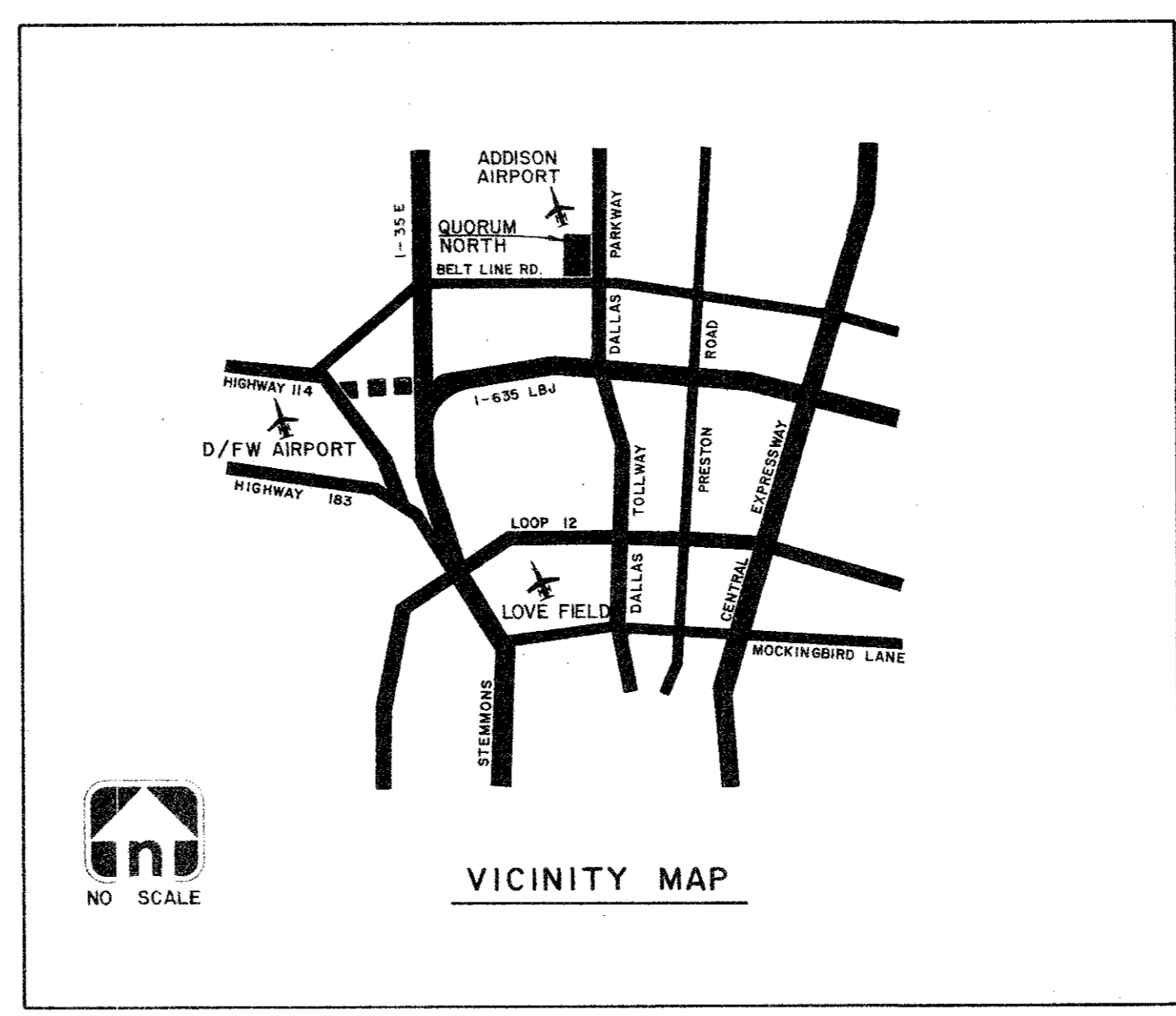

 SCALE: 1" = 200'



INDEX	
SHEET NO.	TITLE
1	COVER SHEET & LAYOUT
2	UTILITY SITE PLAN
3	PAVING PLAN
4	DRAINAGE AREA MAP
5	GRADING PLAN
6	PAVING-QUORUM LOOP NORTH
7	PAVING-LOOP NORTH & FACTORY ST.
8	STORM SEWER LINE 'A'
9	STORM SEWER LINES 'A' & 'B'
10	10" SAN. SEW. APPROACH MAIN
11	SAN. SEW. LINE 'A'
12	SAN. SEW. LINE 'A'
13	PAVING DETAILS
14	WATER MAIN APPURTENANCES
15	SAN. SEW. DETAILS
16	STORM DRAIN INLET DETAILS
17	DETAIL - TYPE 'Y' INLET
18	DETAIL - CONCRETE CRADLE
19	DETAIL - TYPE I & II INLET

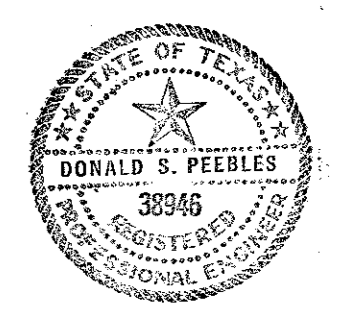
CITY OF ADDISON
APPROVED
 FOR CONSTRUCTION
 BUILDING DEPARTMENT
 DATE: _____
 NOTE: CONTRACTOR IS HEREBY INSTRUCTED TO
 EXERCISE CARE IN ALL HIS OR HER WORK, KEEPING ALL RE-
 QUIREMENTS OF BOTH NATIONAL AND LOCAL CODES
 AND FOR ORDINANCES APPLICABLE TO HIS WORK.
 APPROVAL OF THESE DMS DOES NOT RELIEVE THE CON-
 TRACTOR TO RELIEVE RESPONSIBILITY OR IMPLY
 VARIANCE TO SUCH CODES.

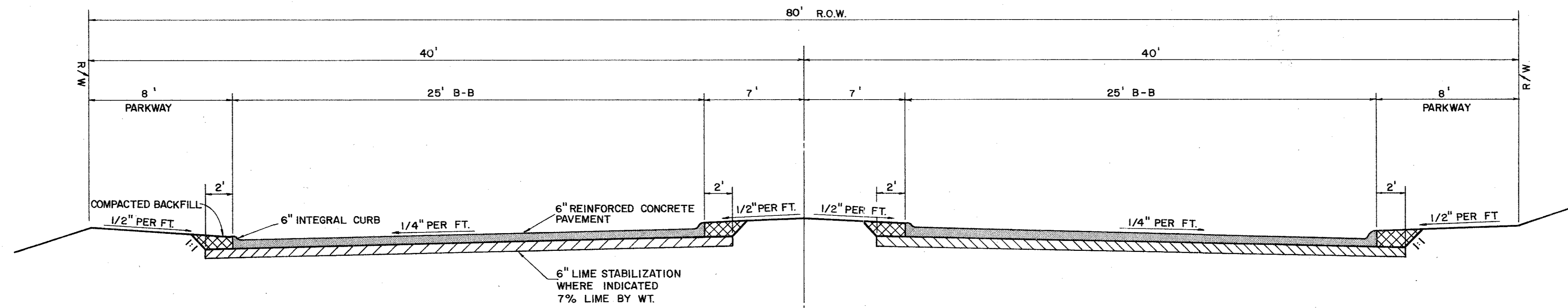
QUORUM NORTH

ADDISON, TEXAS

DAON CORPORATION: DEVELOPER

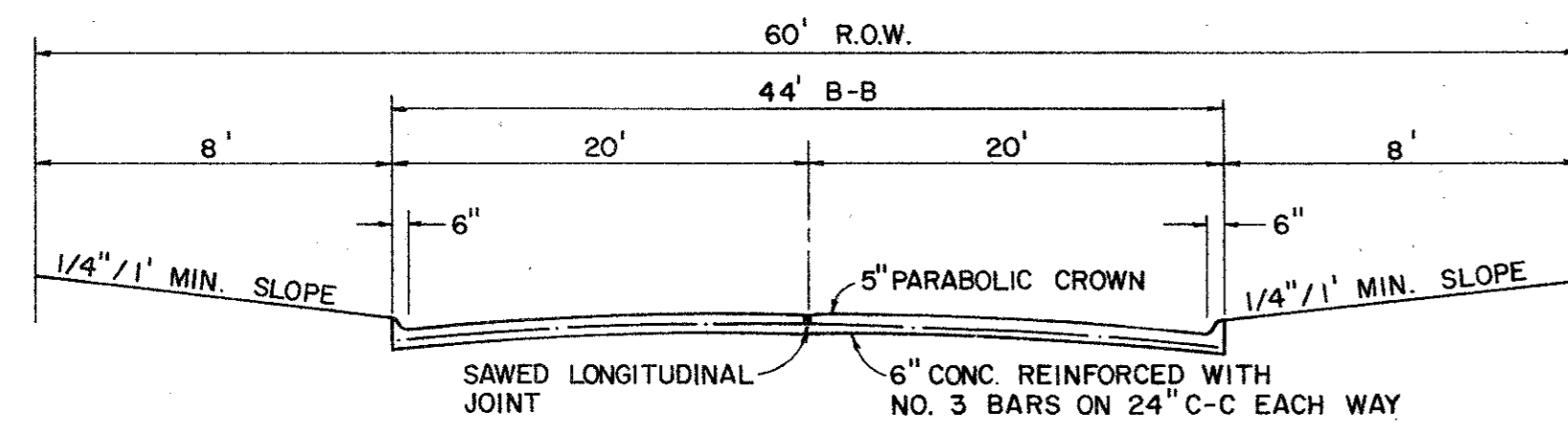
Hellmuth, Obata & Kassabaum, Inc.
 Architects, Engineers, Planners
 Graham Associates, Inc.
 Consulting Engineers & Planners



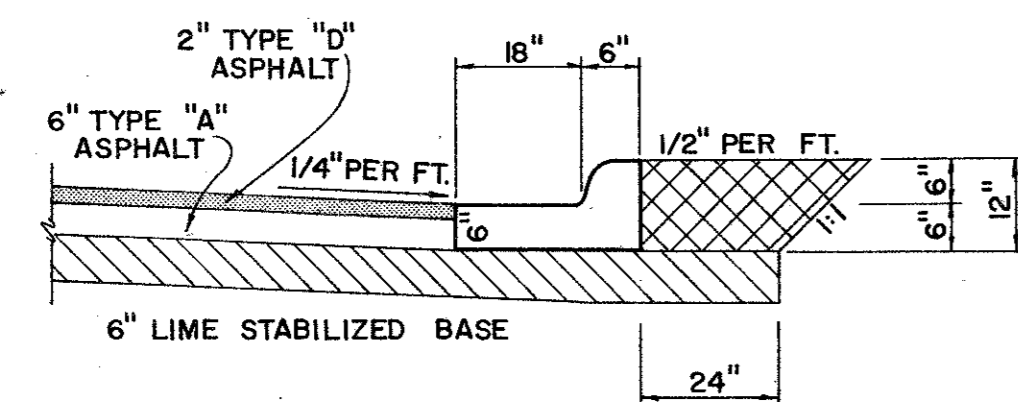


TYPICAL PAVING SECTION FOR QUORUM LOOP NORTH

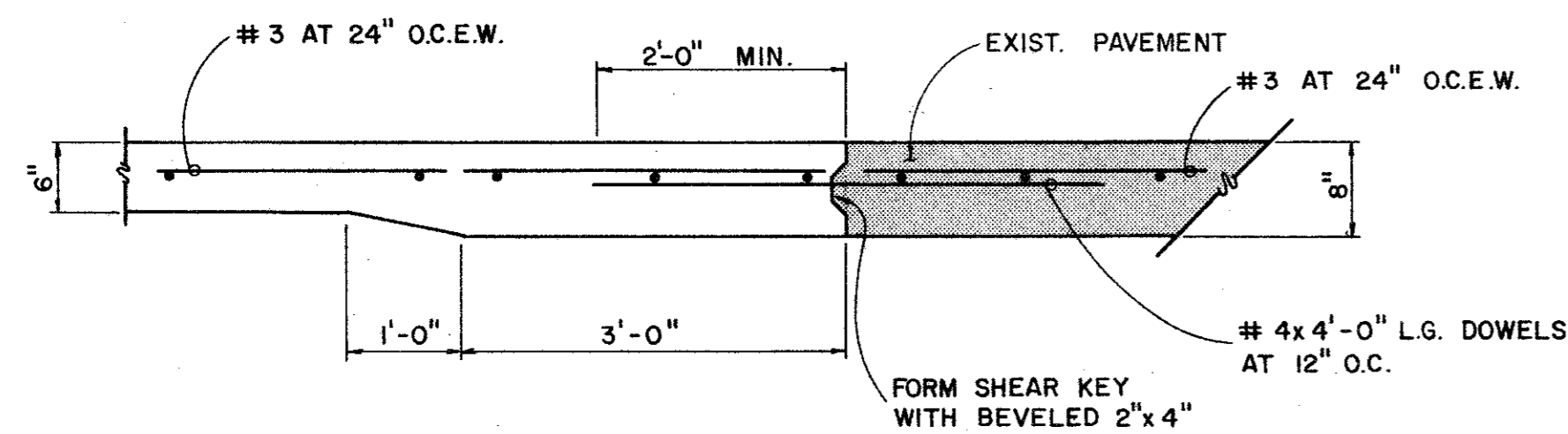
NOTE: CONCRETE SHALL BE 3,000 P.S.I. AT 28 DAYS. LIME SHALL BE SLURRY MIXED PRIOR TO APPLICATION REINFORING SHALL BE NO. 3 AT 24" O.C.E.W.



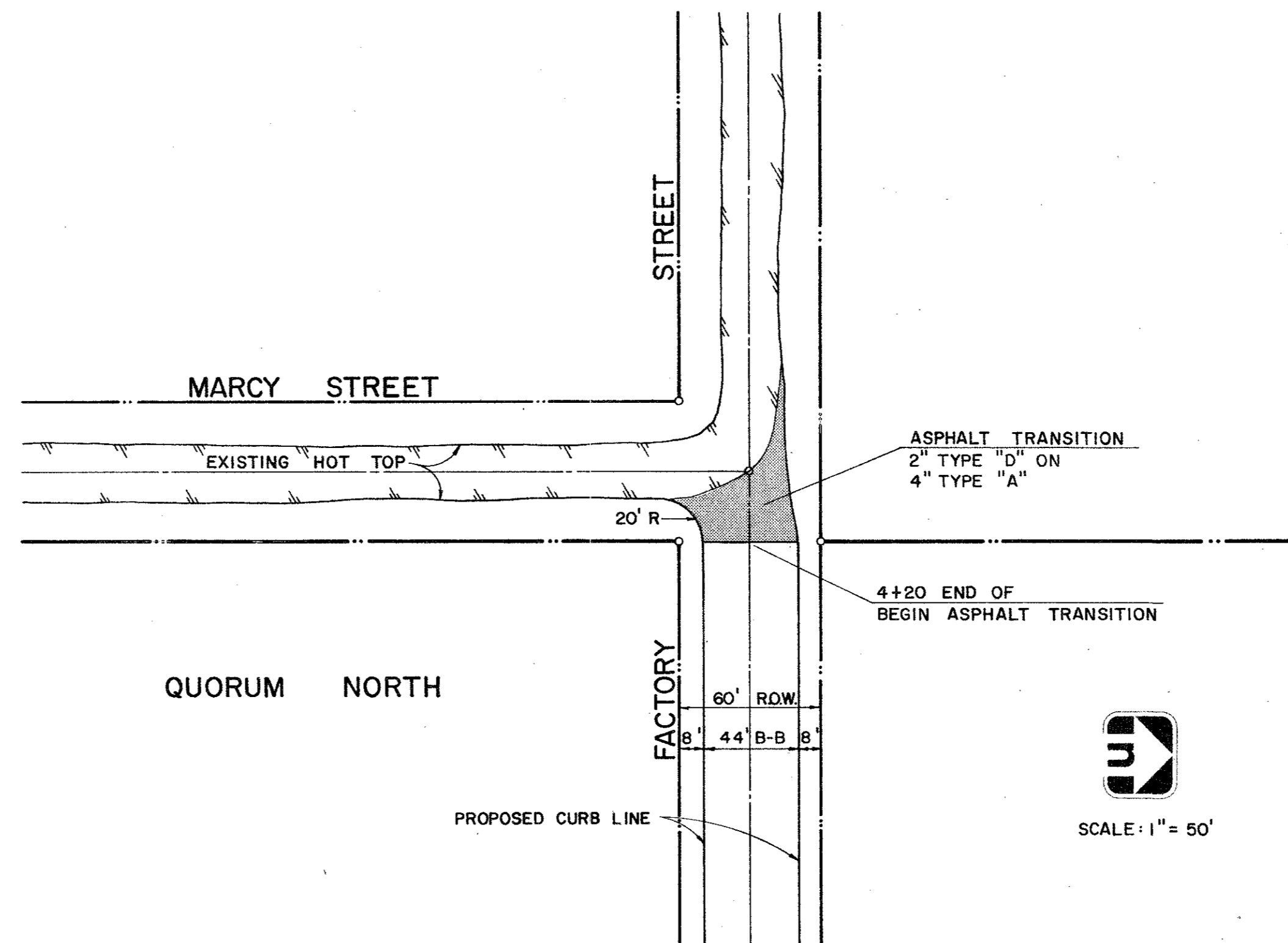
TYPICAL STREET SECTION FACTORY STREET (N.T.S.)



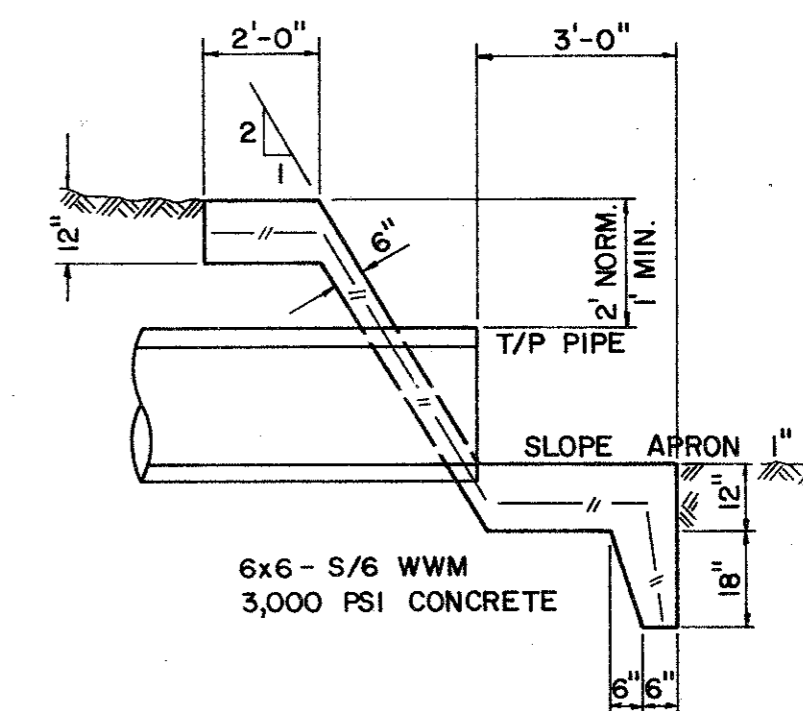
ALTERNATE ASPHALT PAVEMENT SECTION



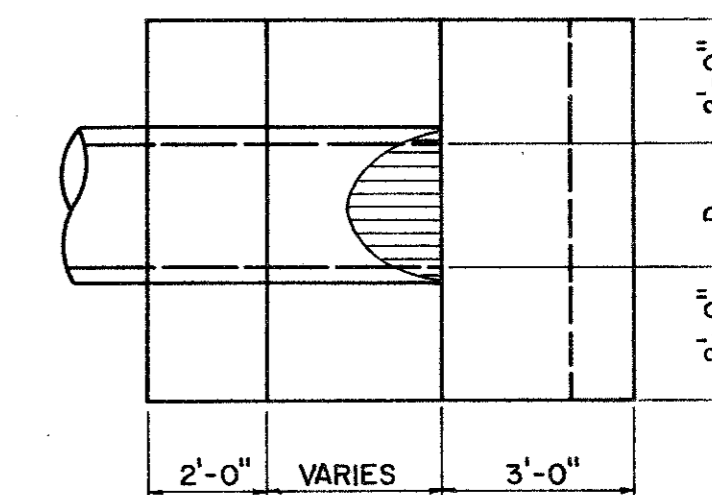
CONCRETE SECTION AT DALLAS PARKWAY TIE - INS



DETAIL OF ASPHALT TRANSITION FACTORY STREET AT MARCY STREET



SECTION

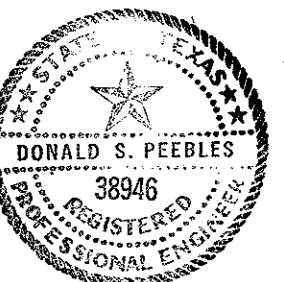


PLAN

TYPE "G" HEADWALL



SCALE: 1" = 50'



PAVING & DRAINAGE DETAILS

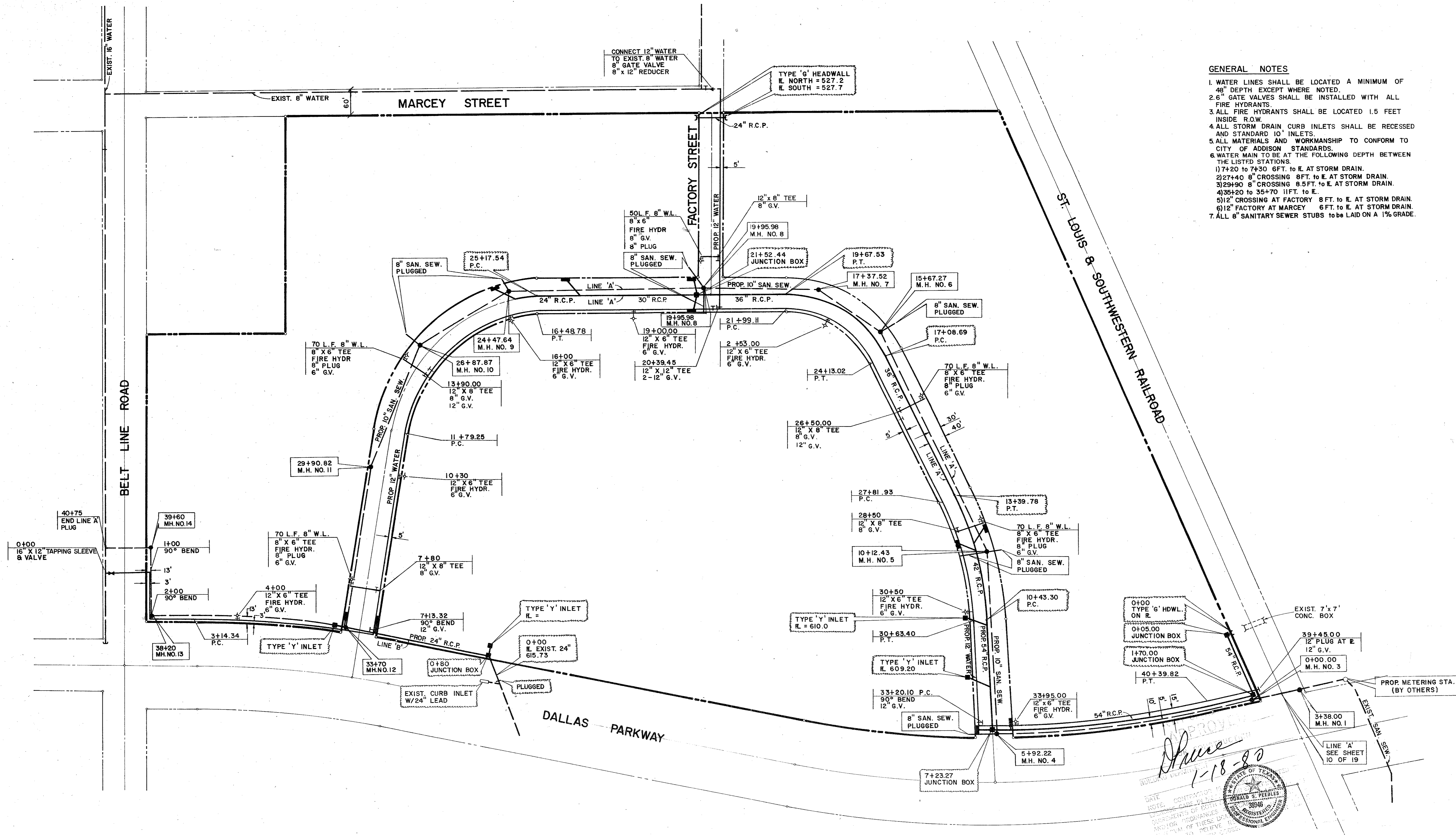
QUORUM NORTH
CITY OF ADDISON, TEXAS

Graham Associates, Inc.
CONSULTING ENGINEERS & PLANNERS

Date
9-79
File
314-1441

Drawn By: G.A.I. Sheet 13 Of 19

- GENERAL NOTES**
1. WATER LINES SHALL BE LOCATED A MINIMUM OF 48" DEPTH EXCEPT WHERE NOTED.
 2. 6" GATE VALVES SHALL BE INSTALLED WITH ALL FIRE HYDRANTS.
 3. ALL FIRE HYDRANTS SHALL BE LOCATED 1.5 FEET INSIDE R.O.W.
 4. ALL STORM DRAIN CURB INLETS SHALL BE RECESSED AND STANDARD 10" INLETS.
 5. ALL MATERIALS AND WORKMANSHIP TO CONFORM TO CITY OF ADDISON STANDARDS.
 6. WATER MAIN TO BE AT THE FOLLOWING DEPTH BETWEEN THE LISTED STATIONS.
 - 1) 7+20 TO 7+30 6FT. TO E. AT STORM DRAIN.
 - 2) 27+40 8" CROSSING 8 FT. TO E. AT STORM DRAIN.
 - 3) 29+90 8" CROSSING 8.5 FT. TO E. AT STORM DRAIN.
 - 4) 35+20 TO 35+70 11 FT. TO E.
 - 5) 12" CROSSING AT FACTORY 8 FT. TO E. AT STORM DRAIN.
 - 6) 12" CROSSING AT FACTORY 8 FT. TO E. AT STORM DRAIN.
 7. ALL 8" SANITARY SEWER STUBS TO BE LAID ON A 1% GRADE.



Shane
1-18-80

DATE: 1-18-80
 CONTRACTOR: DONALD S. PEEBLES
 REGISTERED PROFESSIONAL ENGINEER
 NO. 38946
 STATE OF TEXAS

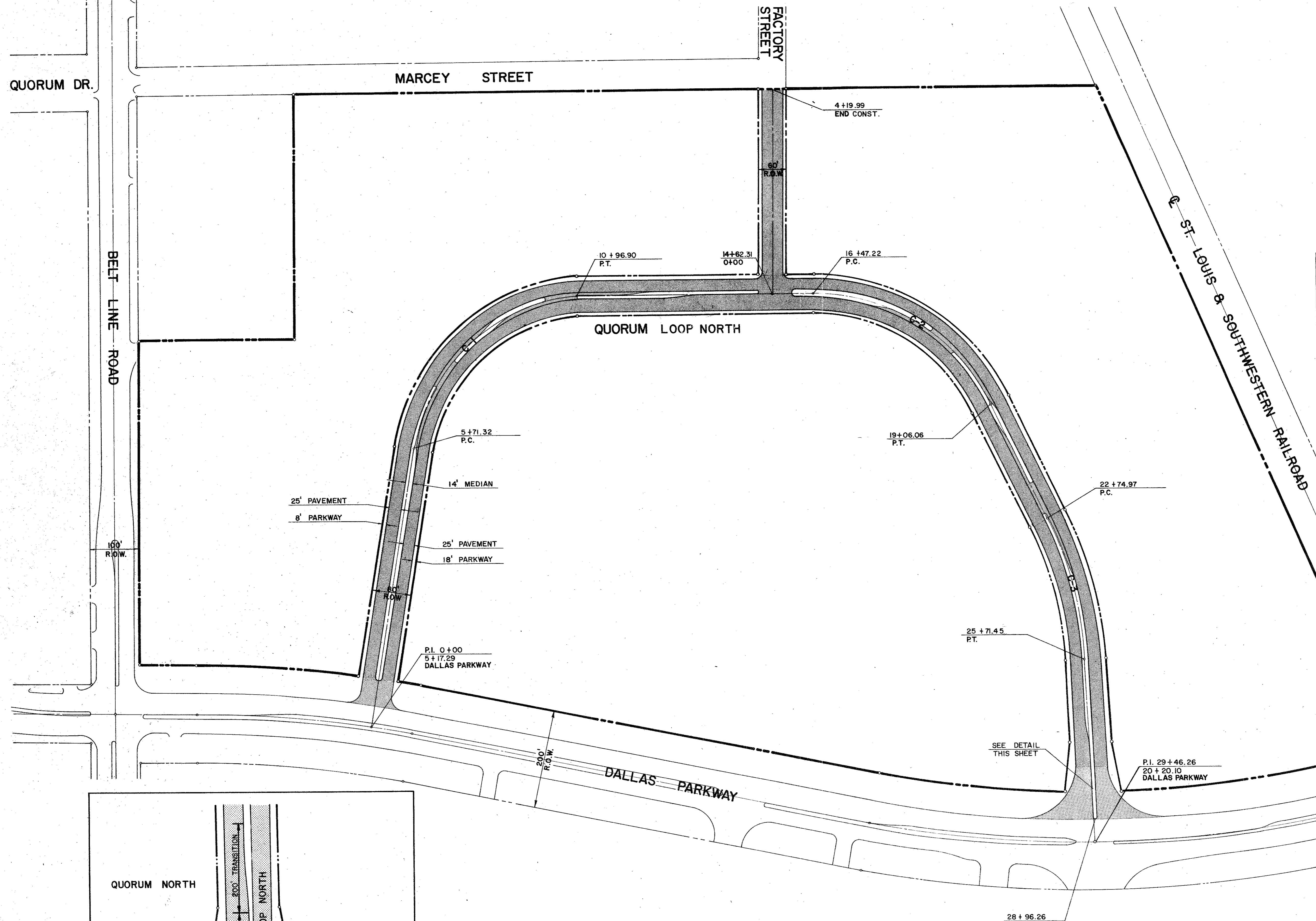
UTILITY SITE PLAN
 QUORUM NORTH
 CITY OF ADDISON, TEXAS



SCALE 1"=100'

Graham Associates, Inc.
 CONSULTING ENGINEERS & PLANNERS

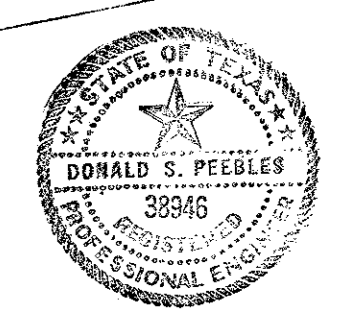
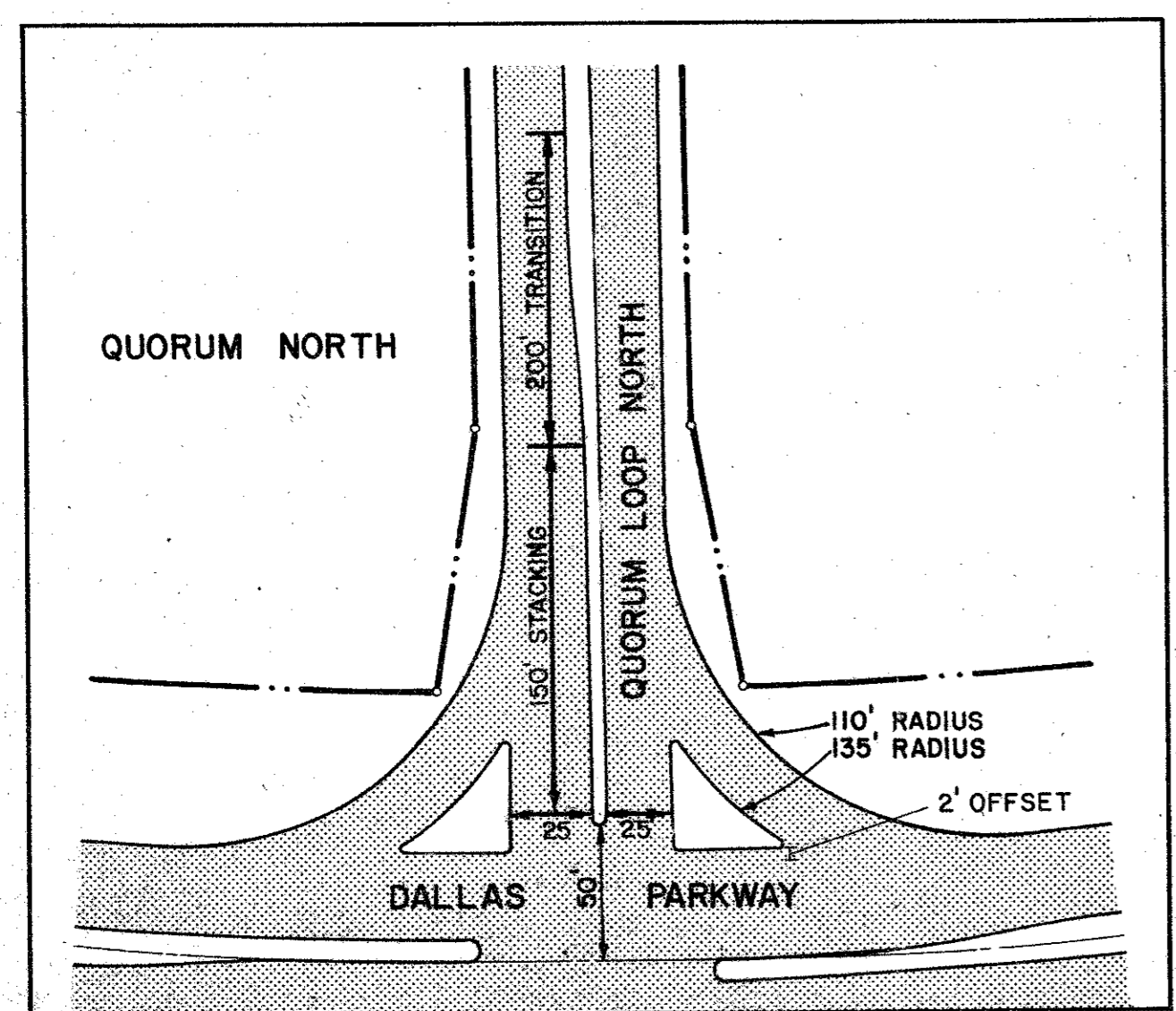
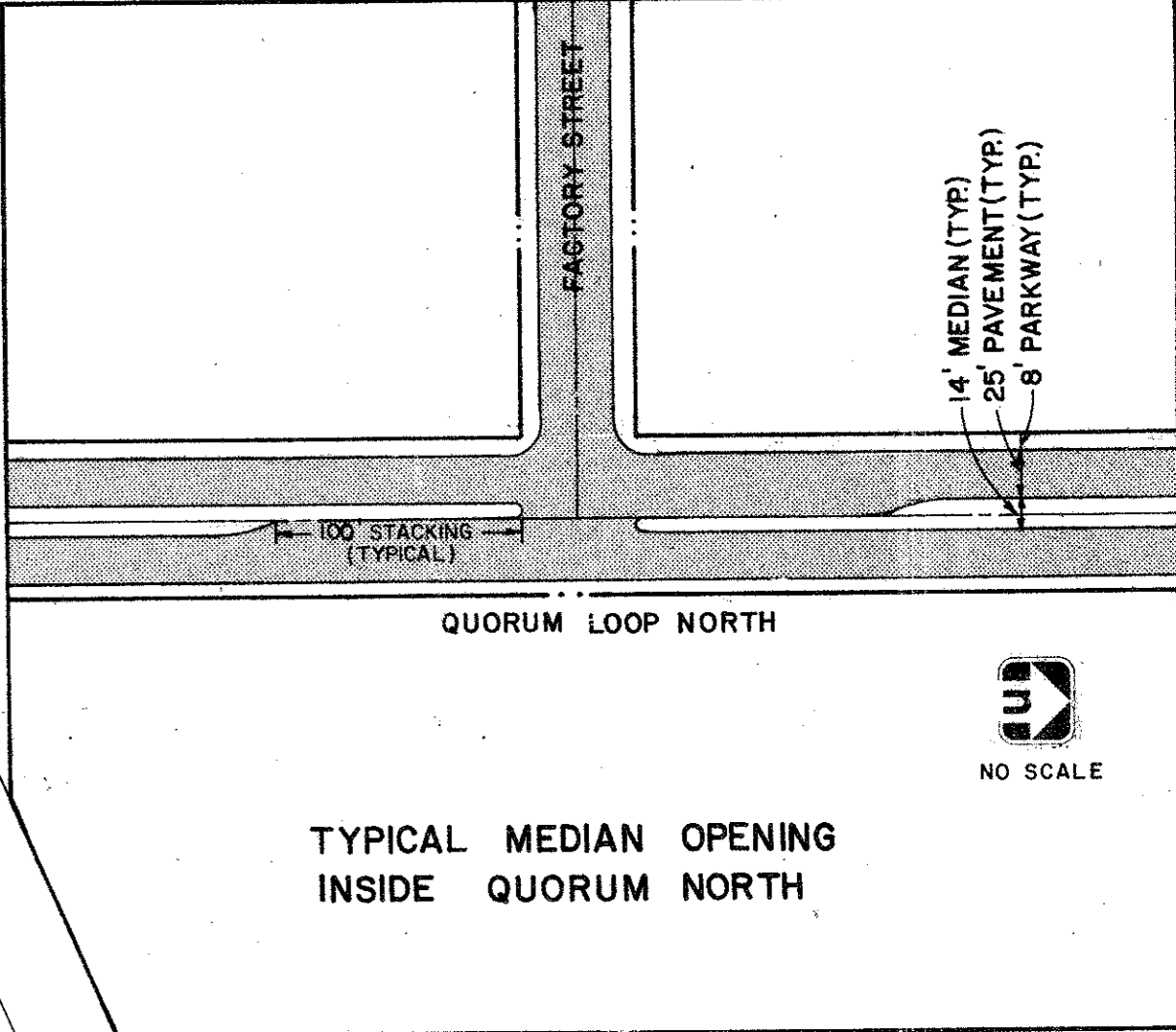
Drawn By: G. A. I. Sheet 2 Of 19 Date: 9/20/79 File: 314-1441



☉ CURVE DATA

C-1	$\Delta = 80^\circ 15' 39''$	C-2	$\Delta = 64^\circ 21' 46''$
	R = 375.19'		R = 230.42'
	T = 316.28'		T = 145.00'
	L = 525.58'		L = 258.84'
	L.C. = 463.65'		L.C. = 245.45'

C-3	$\Delta = 21^\circ 28' 35''$
	R = 790.96'
	T = 150.00'
	L = 296.48'
	L.C. = 294.75'



SCALE 1"=100'

PAVING PLAN - QUORUM LOOP NORTH
QUORUM NORTH
 CITY OF ADDISON, TEXAS

Graham Associates, Inc. CONSULTING ENGINEERS & PLANNERS	Date	9-20-79
	File	314-1441
Drawn By: G.A.I.	Sheet 3 Of 19	

QUORUM DR.

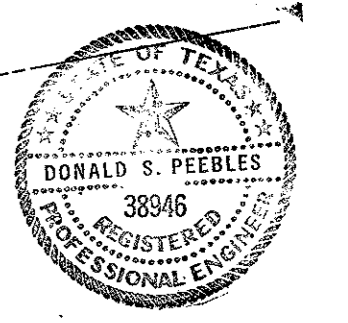
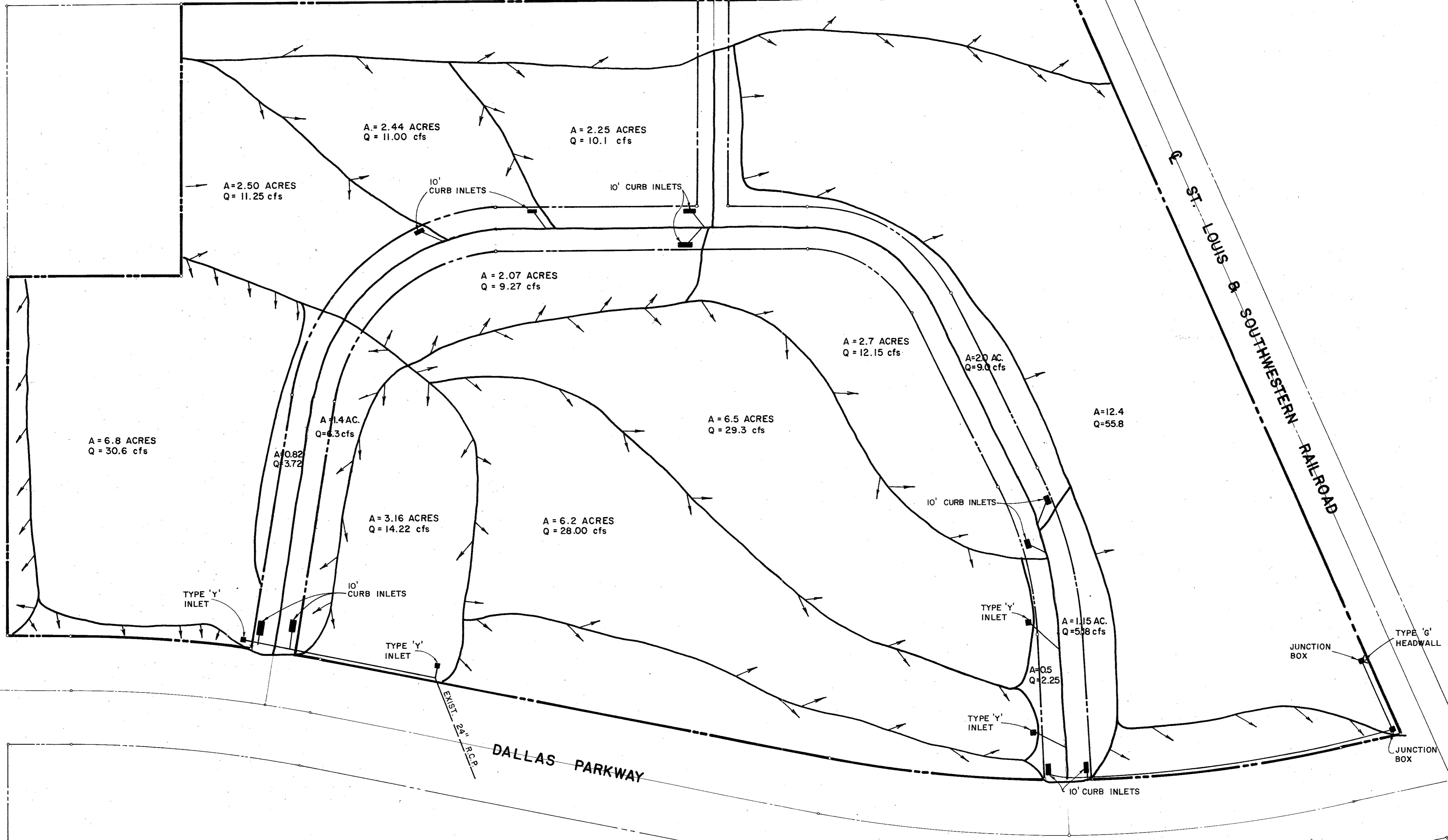
MARCEY ST.

FACTORY STREET

BELT LINE ROAD

ST. LOUIS & SOUTHWESTERN RAILROAD

DALLAS PARKWAY



SCALE: 1"=100'

DRAINAGE PLAN

QUORUM NORTH
CITY OF ADDISON, TEXAS

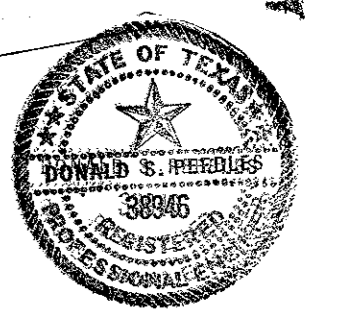
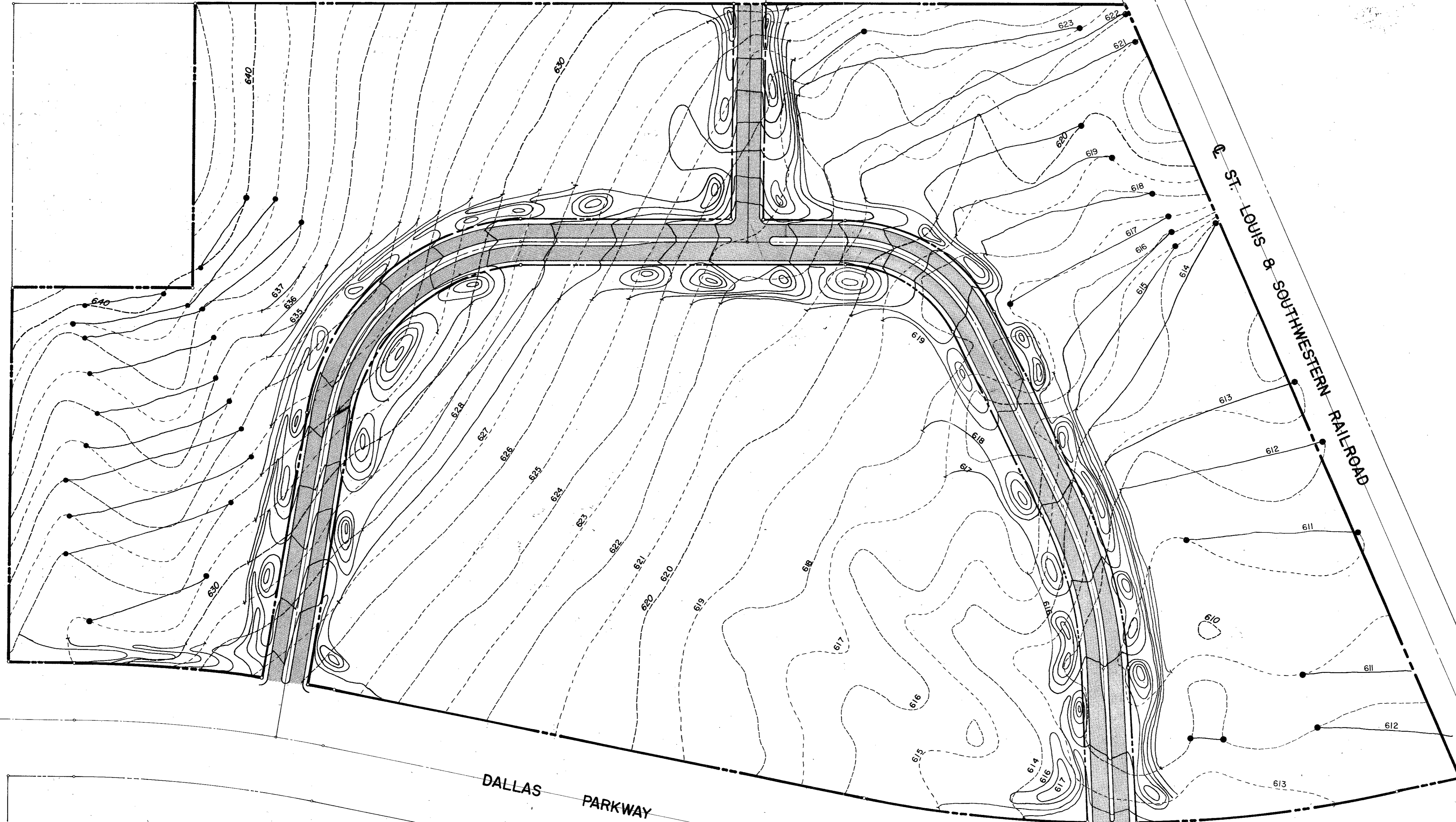
Graham Associates, Inc.
CONSULTING ENGINEERS & PLANNERS

BELT LINE ROAD

MARCY STREET

ST. LOUIS & SOUTHWESTERN RAILROAD

DALLAS PARKWAY



GRADING PLAN

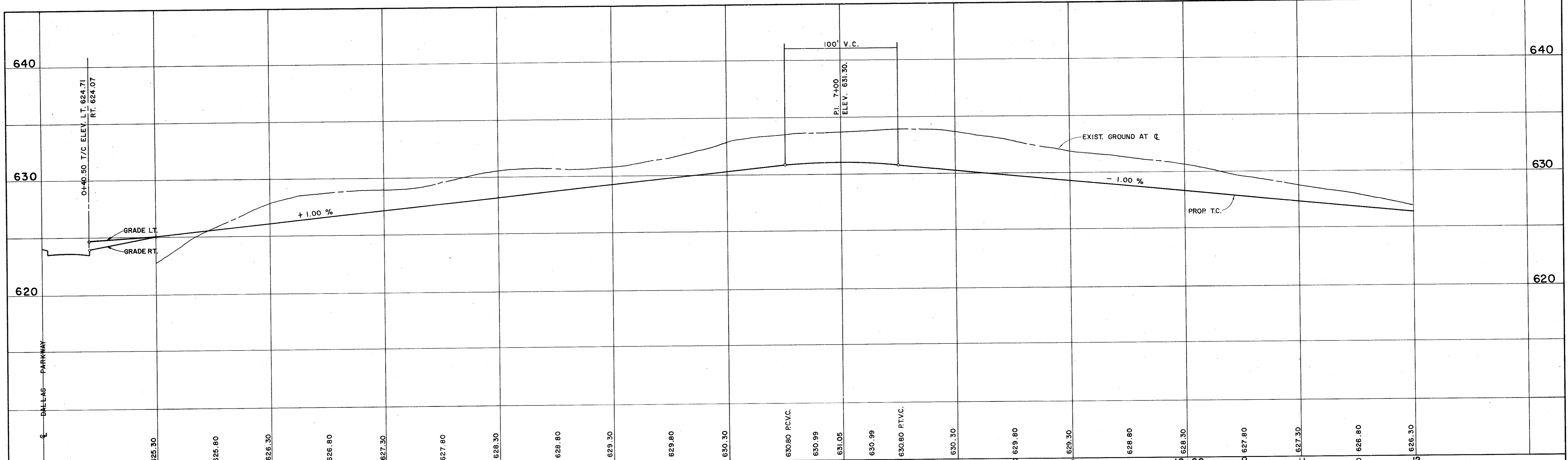
GRADING PLAN

QUORUM NORTH
ADDISON, TEXAS

Graham Associates, Inc.
CONSULTING ENGINEERS & PLANNERS

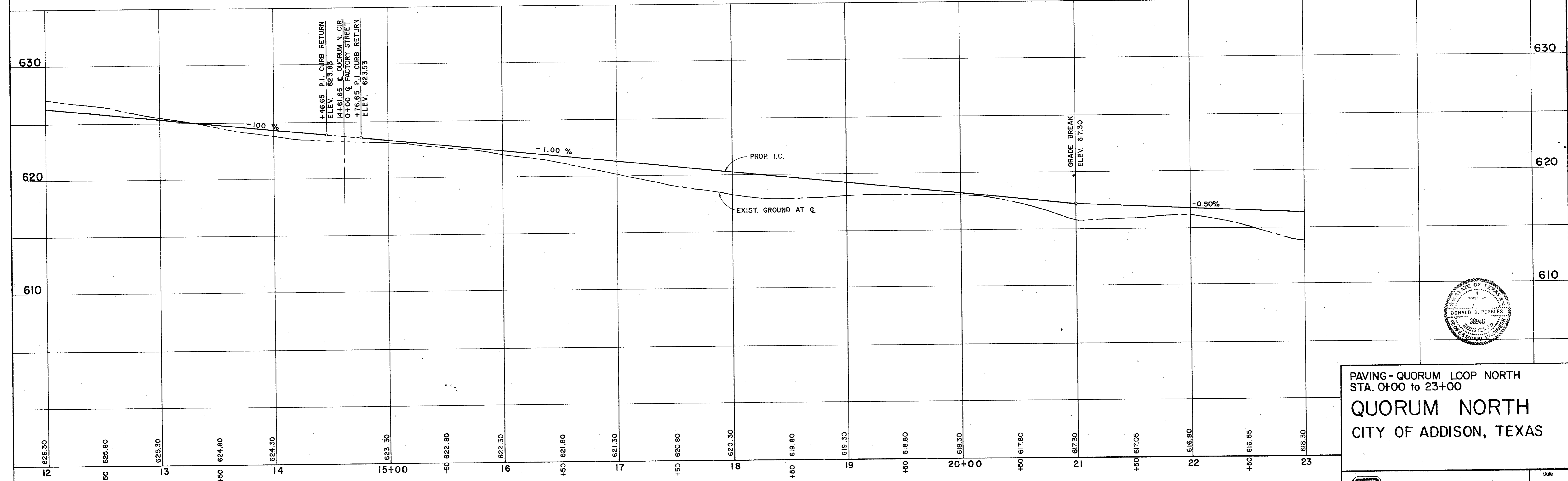
314-1441
9/20/79

DRAWN BY- G.A.I. PAGE 5 of 19

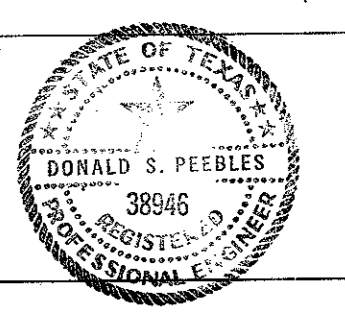


SCALE: HORIZ. 1" = 40'
VERT. 1" = 4'

BENCHMARKS:
" □ " ON NOSE ISLAND SOUTH SIDE BELT LINE
AT DALLAS PARKWAY ELEVATION 630.77
WATER DEPARTMENT BENCHMARK ON INLET ON NORTH-
WEST CORNER OF DALLAS PARKWAY & BELT LINE ROAD
ELEVATION 632.10



+46.65 P.I. CURB RETURN
ELEV. 623.85
+41.61.65 Q. QUORUM N. CIR.
0+00 Q. FACTORY STREET
+76.65 P.I. CURB RETURN
ELEV. 623.53

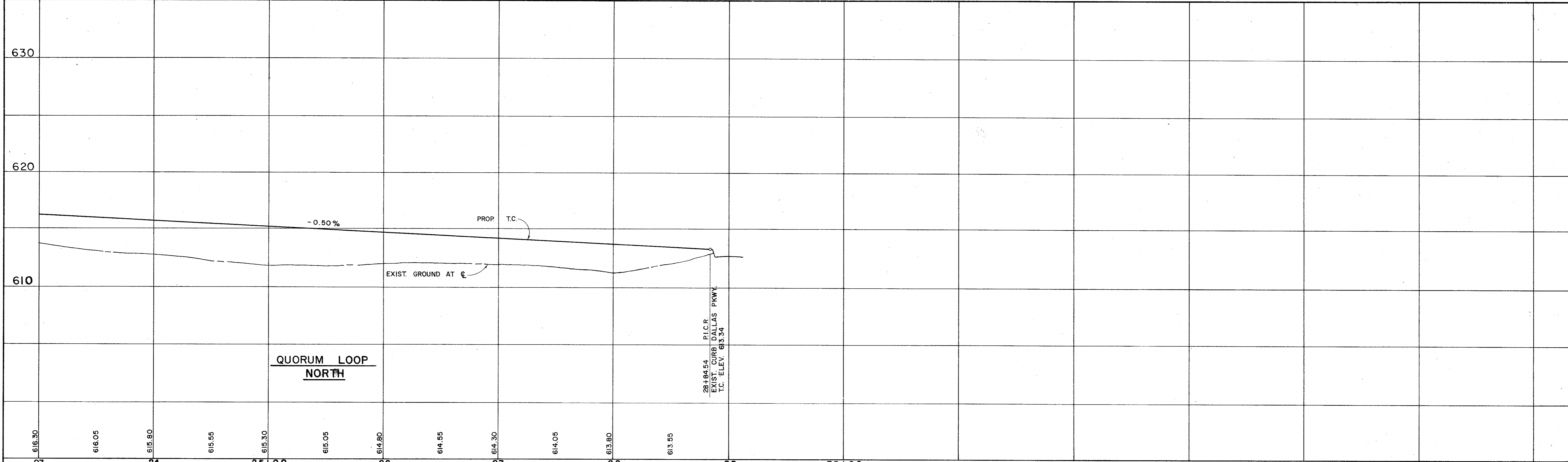


PAVING - QUORUM LOOP NORTH
STA. 0+00 TO 23+00
QUORUM NORTH
CITY OF ADDISON, TEXAS

Graham Associates, Inc.
CONSULTING ENGINEERS & PLANNERS

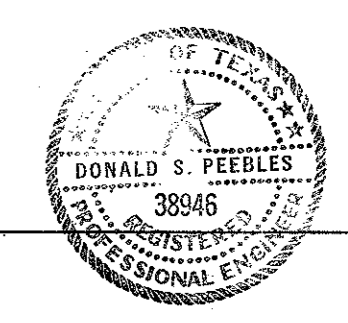
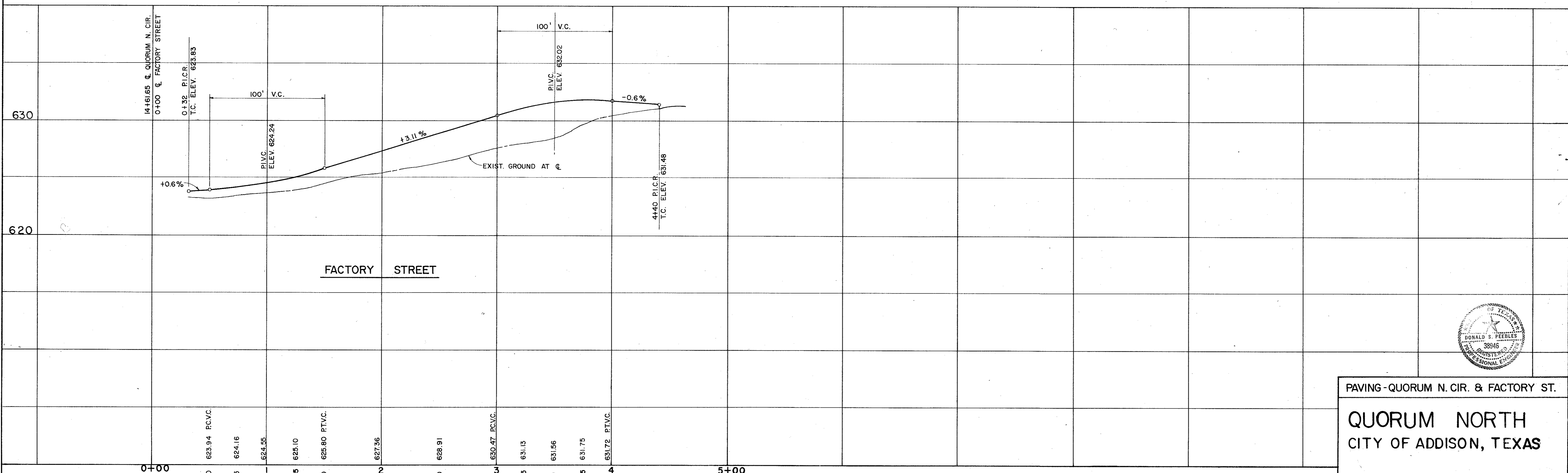
Drawn By: G.A.I. Sheet 6 Of 19

Date: 9-79
File: 314-1441

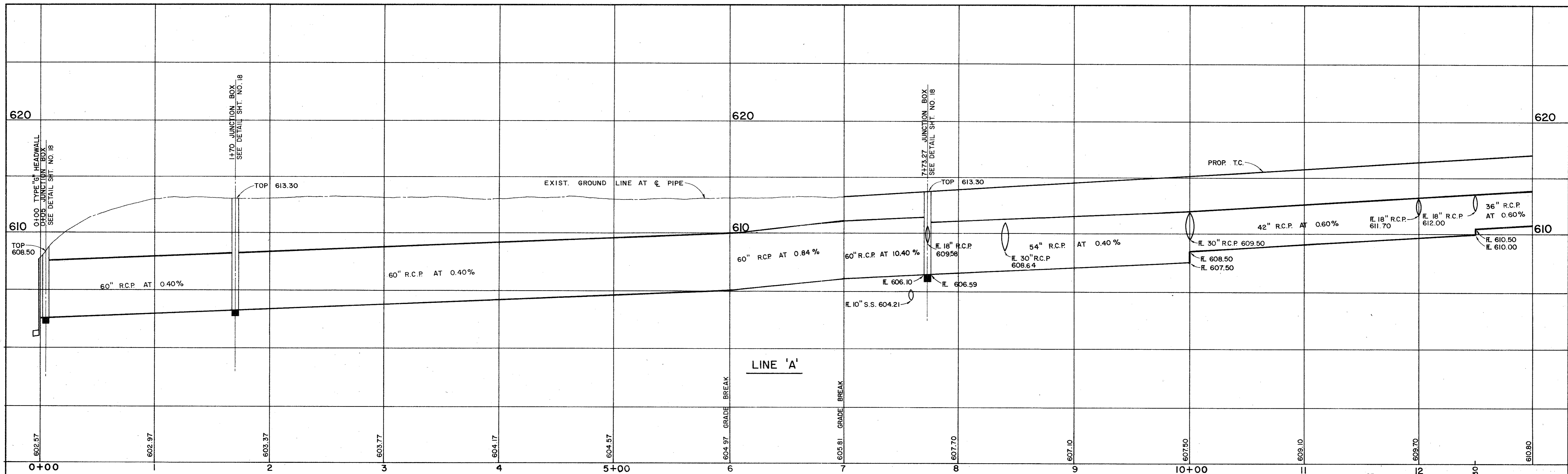


SCALE: HORIZ. 1" = 40'
VERT. 1" = 4'

BENCHMARKS:
" \square " ON NOSE ISLAND SOUTH SIDE BELT LINE AT DALLAS PARKWAY ELEVATION 630.77
WATER DEPARTMENT BENCHMARK ON INLET ON NORTH-WEST CORNER OF DALLAS PARKWAY & BELT LINE ROAD ELEVATION 632.10

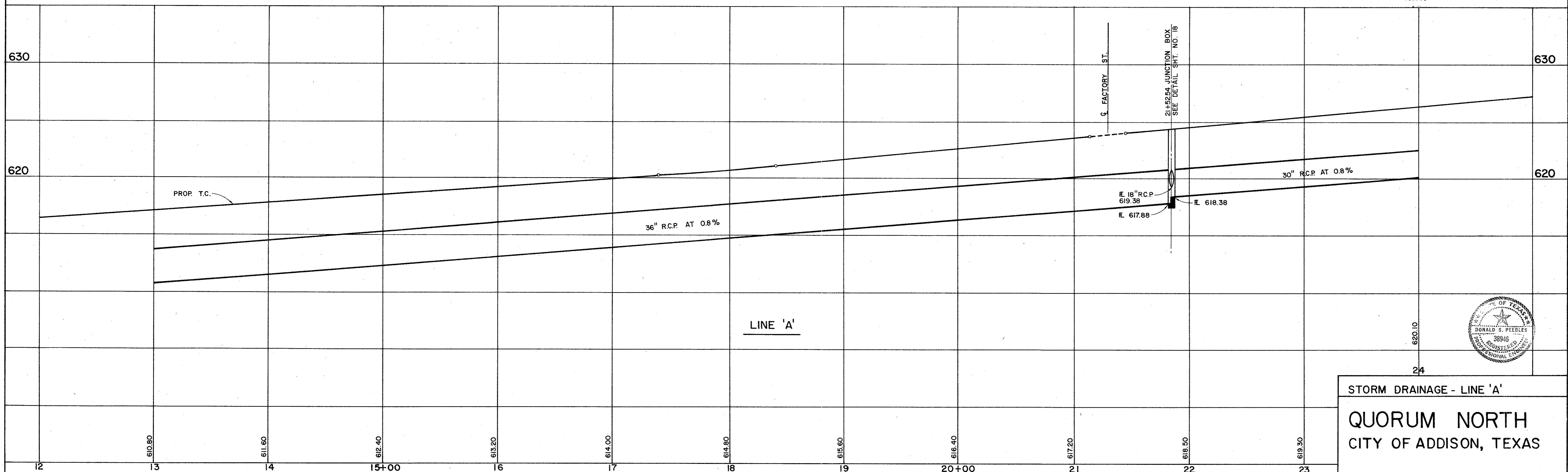


PAVING - QUORUM N. CIR. & FACTORY ST.
QUORUM NORTH
CITY OF ADDISON, TEXAS

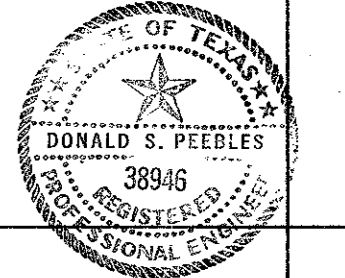


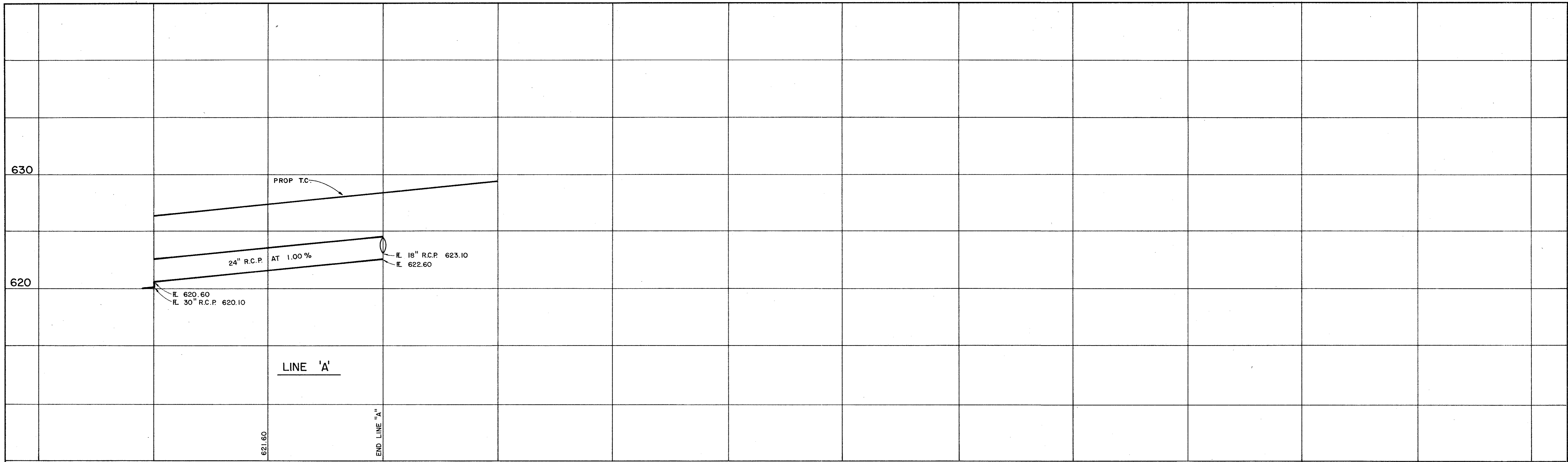
SCALE: HORIZ. 1" = 40'
VERT. 1" = 4'

BENCHMARKS:
 " □ " ON NOSE ISLAND SOUTH SIDE BELT LINE
 AT DALLAS PARKWAY ELEVATION 630.77
 WATER DEPARTMENT BENCHMARK ON INLET ON NORTH-
 WEST CORNER OF DALLAS PARKWAY & BELT LINE ROAD
 ELEVATION 632.10



STORM DRAINAGE - LINE 'A'
 QUORUM NORTH
 CITY OF ADDISON, TEXAS

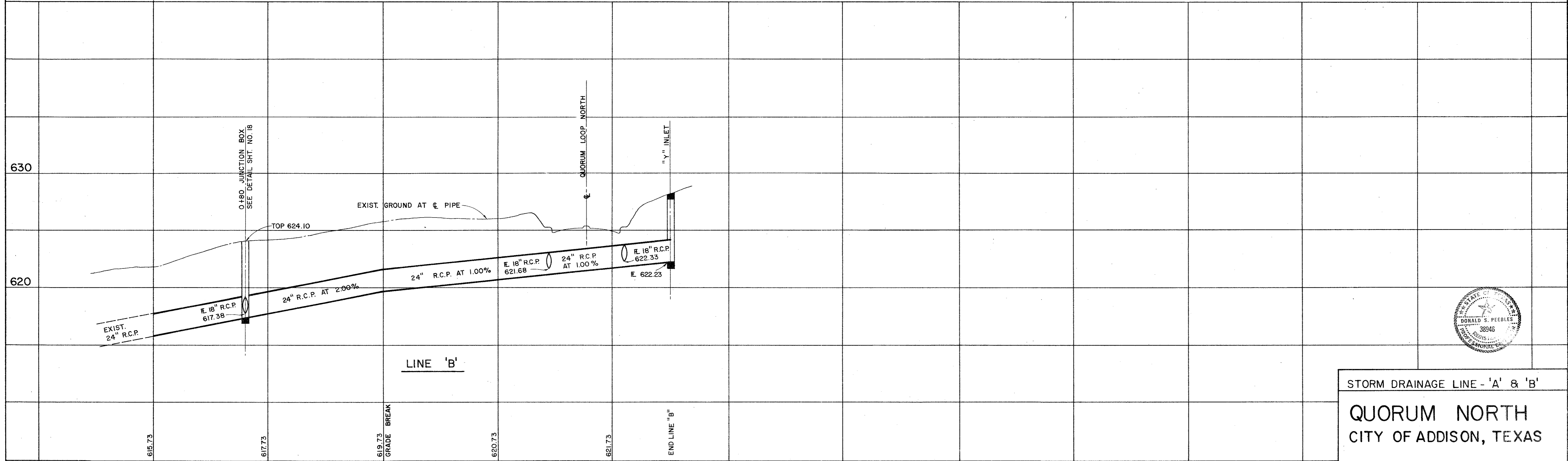




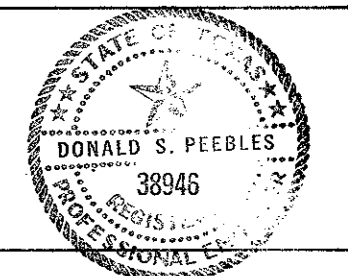
24 25+00 26

SCALE: HORIZ. 1" = 40'
VERT. 1" = 4'

BENCHMARKS:
 " □ " ON NOSE ISLAND SOUTH SIDE BELT LINE
 AT DALLAS PARKWAY ELEVATION 630.77
 WATER DEPARTMENT BENCHMARK ON INLET ON NORTH-
 WEST CORNER OF DALLAS PARKWAY & BELT LINE ROAD
 ELEVATION 632.10

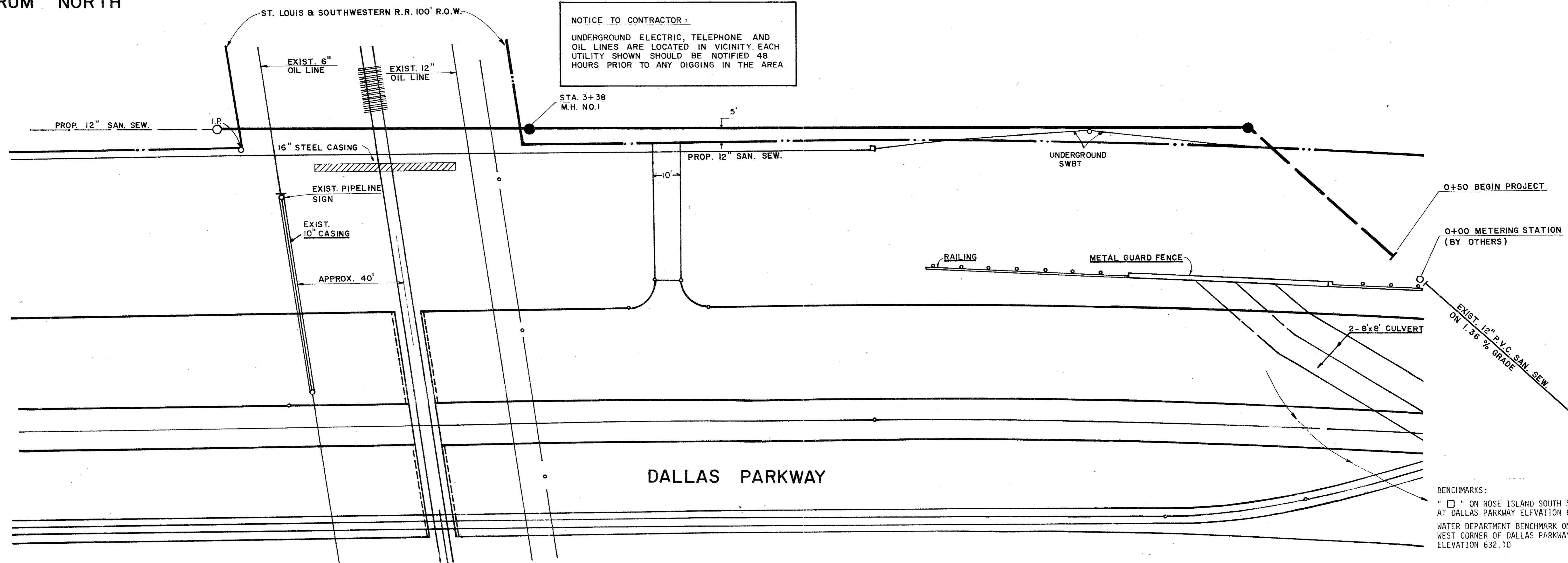


615.73 0+00
 617.73 1
 619.73 2 GRADE BREAK
 620.73 3
 621.73 4
 +50 END LINE "B"

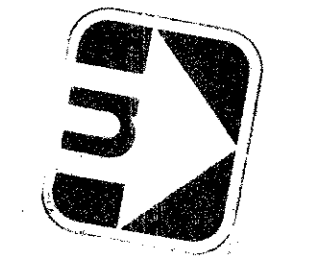


STORM DRAINAGE LINE - 'A' & 'B'
 QUORUM NORTH
 CITY OF ADDISON, TEXAS

QUORUM NORTH

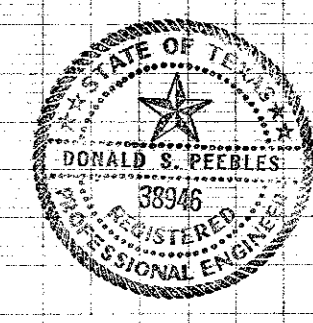
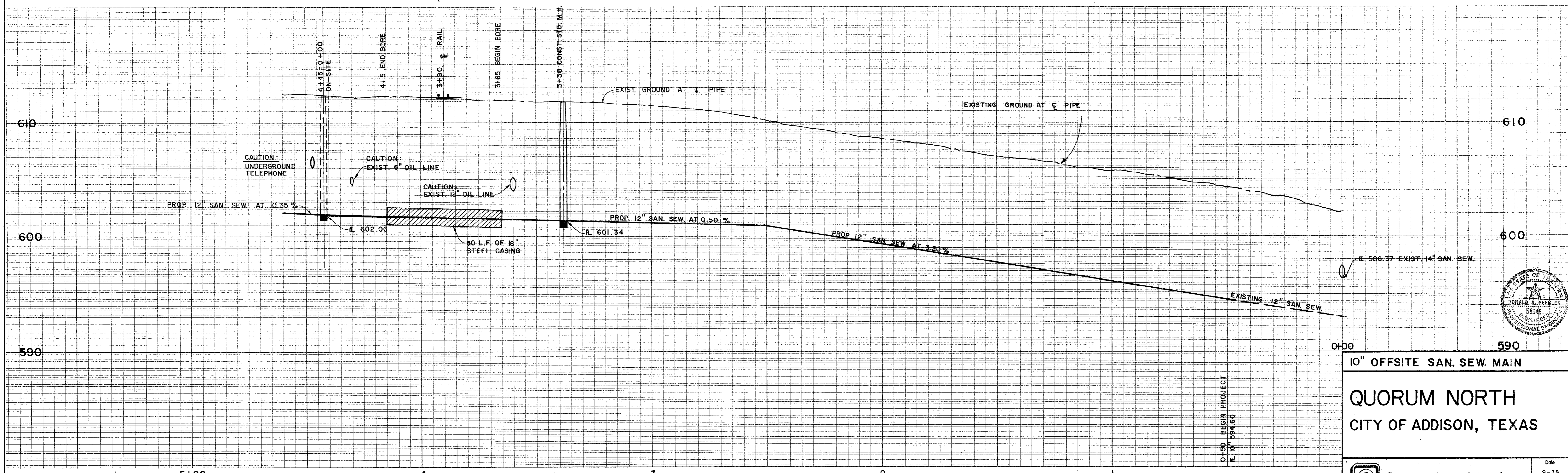


NOTICE TO CONTRACTOR:
 UNDERGROUND ELECTRIC, TELEPHONE AND OIL LINES ARE LOCATED IN VICINITY. EACH UTILITY SHOWN SHOULD BE NOTIFIED 48 HOURS PRIOR TO ANY DIGGING IN THE AREA.



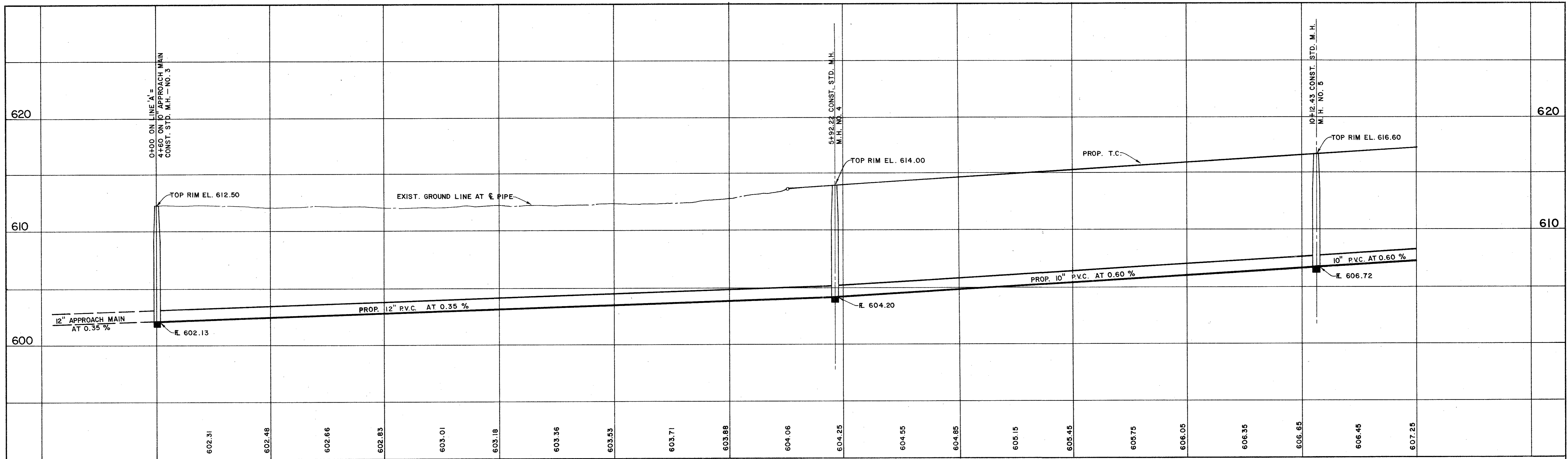
SCALE:
 1" = 20' HORIZ.
 1" = 4' VERT.

BENCHMARKS:
 " □ " ON NOSE ISLAND SOUTH SIDE BELT LINE AT DALLAS PARKWAY ELEVATION 630.77
 WATER DEPARTMENT BENCHMARK ON INLET ON NORTH-WEST CORNER OF DALLAS PARKWAY & BELT LINE ROAD ELEVATION 632.10



10" OFFSITE SAN. SEW. MAIN
QUORUM NORTH
 CITY OF ADDISON, TEXAS

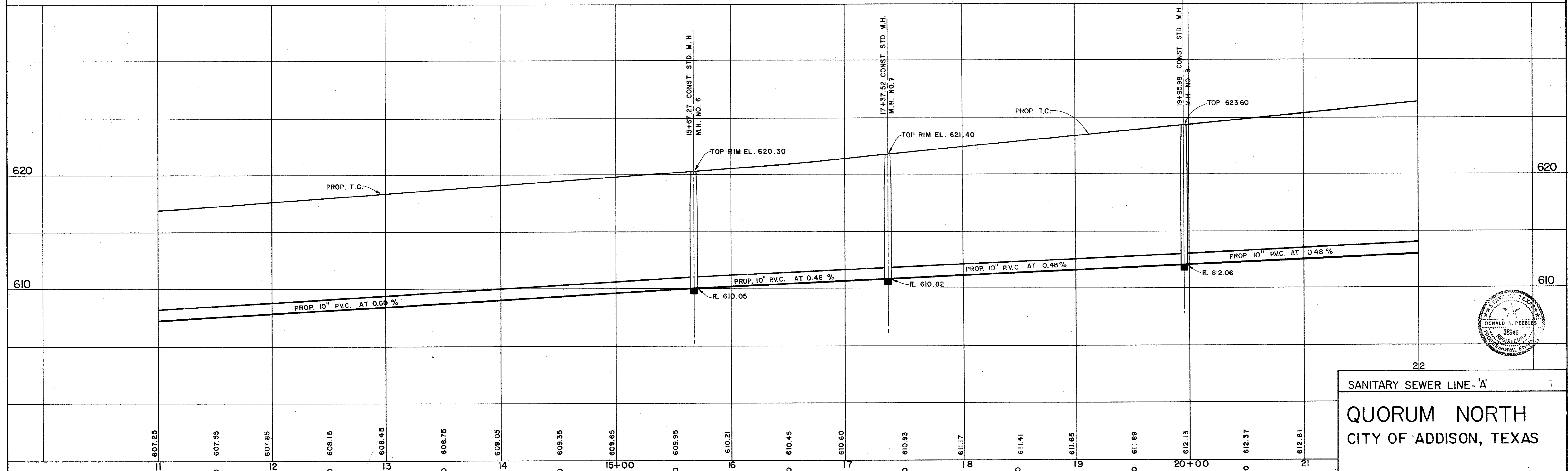
<p>Graham Associates, Inc. CONSULTING ENGINEERS & PLANNERS</p>	Date 9-79
	File 314-1441
Drawn By: D.A.L. Sheet 10 of 19	



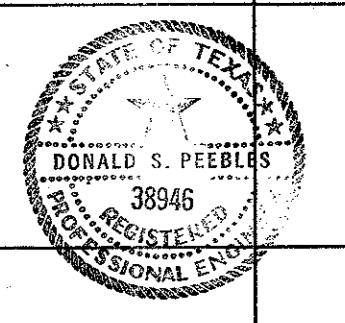
0+00 602.31 602.48 602.66 602.83 603.01 603.18 603.36 603.53 603.71 603.88 604.06 604.25 604.55 604.85 605.15 605.45 605.75 606.05 606.35 606.65 606.45 607.25

SCALE: HORIZ. 1" = 40'
VERT. 1" = 4'

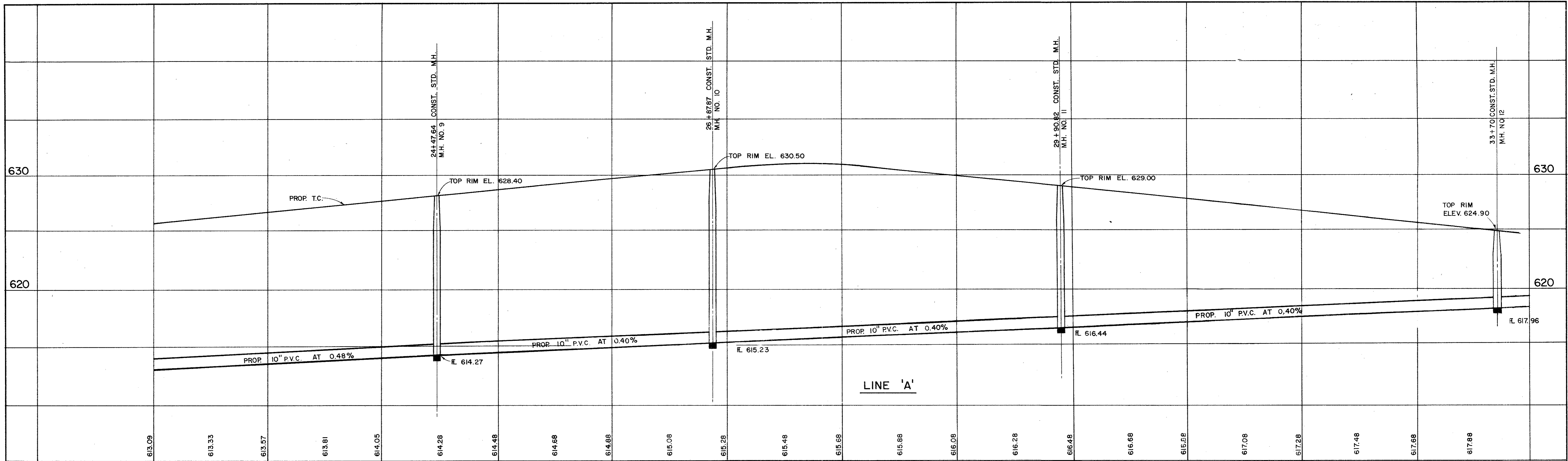
BENCHMARKS:
 + □ " ON NOSE ISLAND SOUTH SIDE BELT LINE AT DALLAS PARKWAY ELEVATION 630.77
 + WATER DEPARTMENT BENCHMARK ON INLET OF NORTH-WEST CORNER OF DALLAS PARKWAY & BELT LINE ROAD ELEVATION 632.10



11 607.25 607.55 607.85 608.15 608.45 608.75 609.05 609.35 609.65 609.95 610.21 610.45 610.60 610.93 611.17 611.41 611.65 611.89 612.13 612.37 612.61



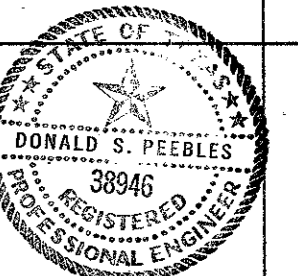
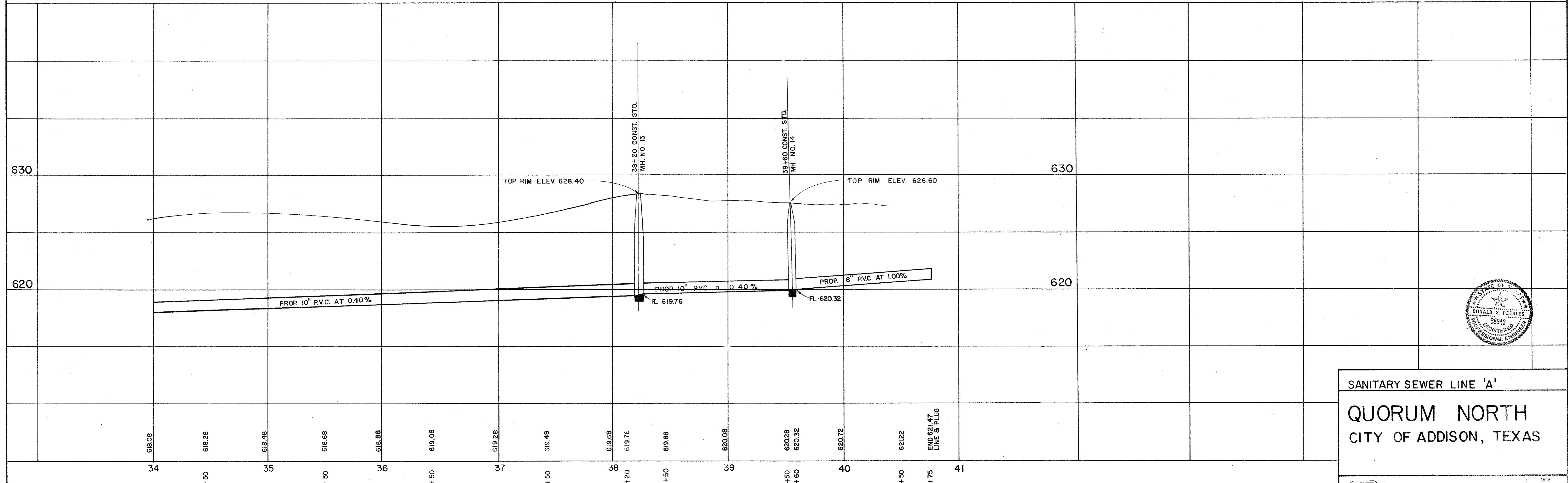
22
 SANITARY SEWER LINE - 'A'
 QUORUM NORTH
 CITY OF ADDISON, TEXAS



LINE 'A'

SCALE: HORIZ. 1" = 40'
VERT. 1" = 4'

BENCHMARKS:
" □ " ON NOSE ISLAND SOUTH SIDE BELT LINE
AT DALLAS PARKWAY ELEVATION 630.77
WATER DEPARTMENT BENCHMARK ON INLET ON NORTH-
WEST CORNER OF DALLAS PARKWAY & BELT LINE ROAD
ELEVATION 632.10



SANITARY SEWER LINE 'A'
QUORUM NORTH
CITY OF ADDISON, TEXAS

<p>Graham Associates, Inc. CONSULTING ENGINEERS & PLANNERS</p>	Date	9-79
	File	314-1441
Drawn By: G.A.I.	Sheet 12 of 19	