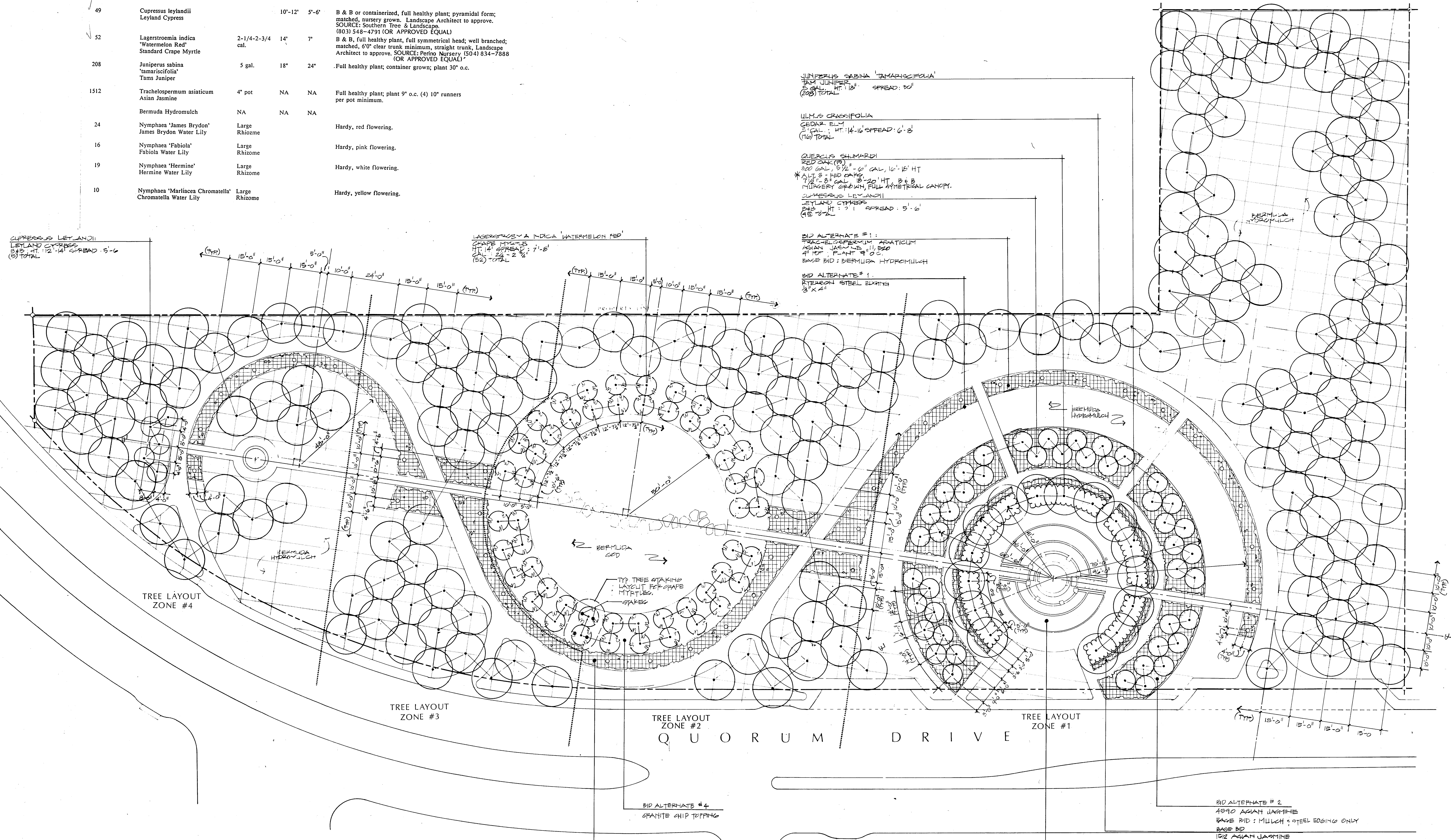


PLANT LEGEND

QUANTITY	COMMON NAME BOTANICAL NAME	SIZE	HEIGHT	SPREAD	RECOMMENDATIONS
15	Quercus shumardi Red Oak	300 gal. 5-1/2'-6 cal.	16'-18'	10'	Single straight trunk, full, symmetrical head, well branched, containerized nursery grown, matching height and clear trunk. Landscape Architect to approve. SOURCE: Skimmers Nursery (504) 737-8733 (OR APPROVED EQUAL)
170	Ulmus crassifolia Cedar Elm	5' cal.	14'-16'	8'	Single straight trunk, full well branched head, field grown, matched. Landscape Architect to approve.
49	Cupressus leylandii Leyland Cypress		10'-12'	5'-6'	B & B or containerized, full healthy plant; pyramidal form; matched, nursery grown. Landscape Architect to approve. SOURCE: Southern Tree & Landscape (803) 548-4791 (OR APPROVED EQUAL)
52	Lagerstroemia indica 'Watermelon Red' Standard Crape Myrtle	2-1/4-2-3/4 cal.	14'	7'	B & B, full healthy plant, full symmetrical head; well branched; matched, 60" clear trunk minimum, straight trunk; Landscape Architect to approve. SOURCE: Perino Nursery (504) 834-7888 (OR APPROVED EQUAL)
208	Juniperus sabina 'amarisifolia' Tams Juniper	5 gal.	18"	24"	Full healthy plant; container grown; plant 30" o.c.
1512	Trachelospermum asiaticum Asian Jasmine	4" pot	NA	NA	Full healthy plant; plant 9" o.c. (4) 10" runners per pot minimum.
	Bermuda Hydromulch	NA	NA	NA	
24	Nymphaea 'James Brydon' James Brydon Water Lily	Large Rhizome			Hardy, red flowering.
16	Nymphaea 'Fabiola' Fabiola Water Lily	Large Rhizome			Hardy, pink flowering.
19	Nymphaea 'Hermine' Hermine Water Lily	Large Rhizome			Hardy, white flowering.
10	Nymphaea 'Mariacea Chromatella' Chromatella Water Lily	Large Rhizome			Hardy, yellow flowering.



JUNIPERUS SABINA 'AMARISIFOLIA'
TAM JUNIPER
5 GAL. HT: 18" SPREAD: 20"
(208) TOTAL

ULMUS CRASSIFOLIA
CEDAR ELM
5 CAL. HT: 14-16' SPREAD: 6'-8'
(170) TOTAL

QUERCUS SHUMARDI
RED OAK (15)
300 GAL, 5 1/2' - 6" CAL, 16'-18' HT
* ALL B & B CANS
7 1/2' - 8' CAL, 15'-20' HT, B & B
NURSERY GROWN, FULL SYMMETRICAL CANOPY.

CUPRESSUS LEYLANDII
LEYLAND CYPRESS
5 GAL HT: 10'-12' SPREAD: 5'-6"
(49) TOTAL

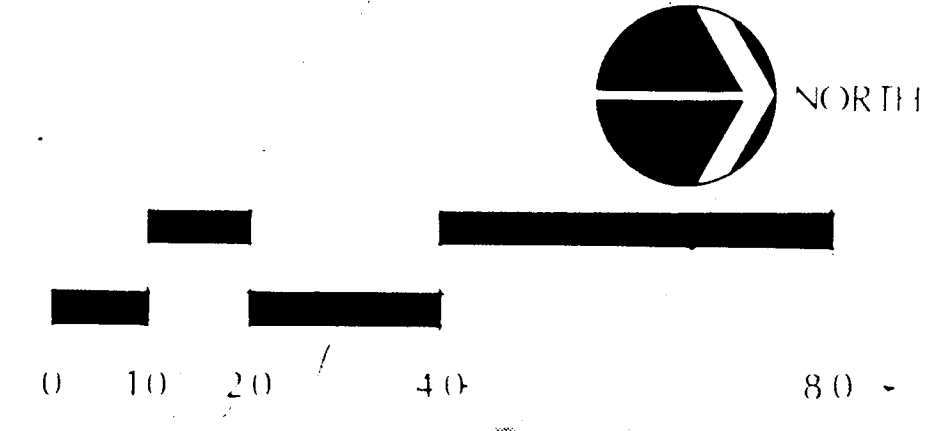
BID ALTERNATE #1:
TRACHELOSPERMUM ASIATICUM
ASIAN JASMINE (1512)
4" POT PLANT 9" O.C.
BASE BID: BERMUDA HYDROMULCH

BID ALTERNATE #2:
NYMPHAEA WATER LILY
3' X 4'

CUPRESSUS LEYLANDII
LEYLAND CYPRESS
5 GAL HT: 12-14' SPREAD: 5'-6"
(52) TOTAL

LAGERSTROEMIA INDICA 'WATERMELON RED'
STANDARD CRAPE MYRTLE
2 1/4' - 2 3/4' CAL, 14' HT, 7'-8' SPREAD
(52) TOTAL

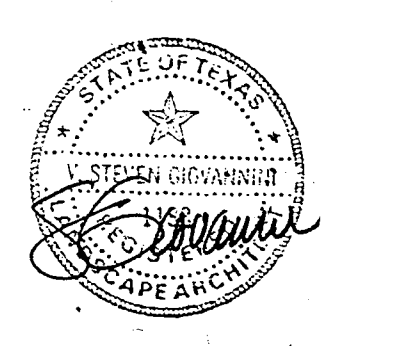
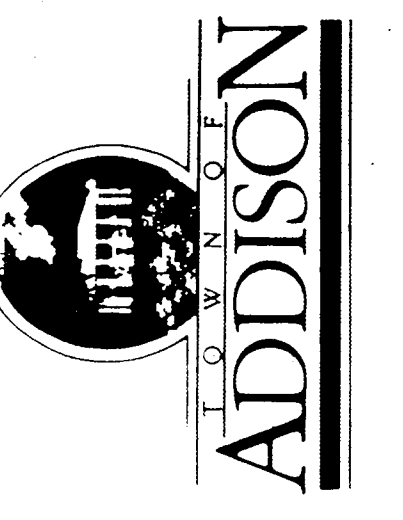
REFER TO SHEET L-2 FOR
LILLY POND PLANTING PLAN



S I T E P L A N

PLANTING PLAN

QUORUM PARK
ADDISON, TEXAS



PROJECT NO.	
DATE	29 JAN 1990
REVISIONS	

PROJECT NO.	88019
DESIGN BY	SG
CHECKED BY	
SCALE	1" = 20'-0"
SHEET NO.	L-1