

Water Management
Irrigation Consultant
200 Highland Village Rd.
Suite 200
Highland Village, Texas 75067
214-437-2370

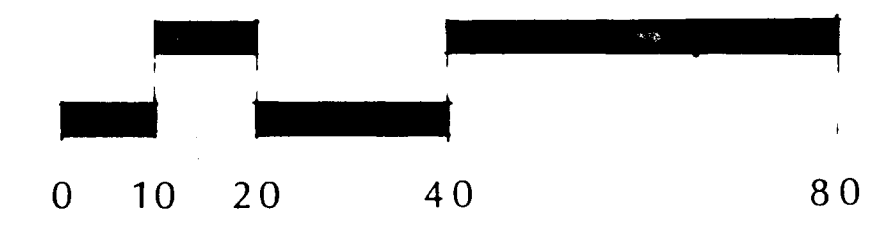
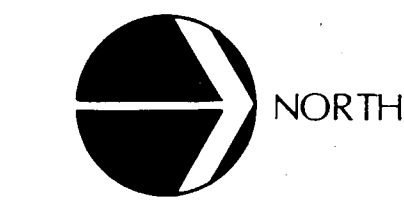
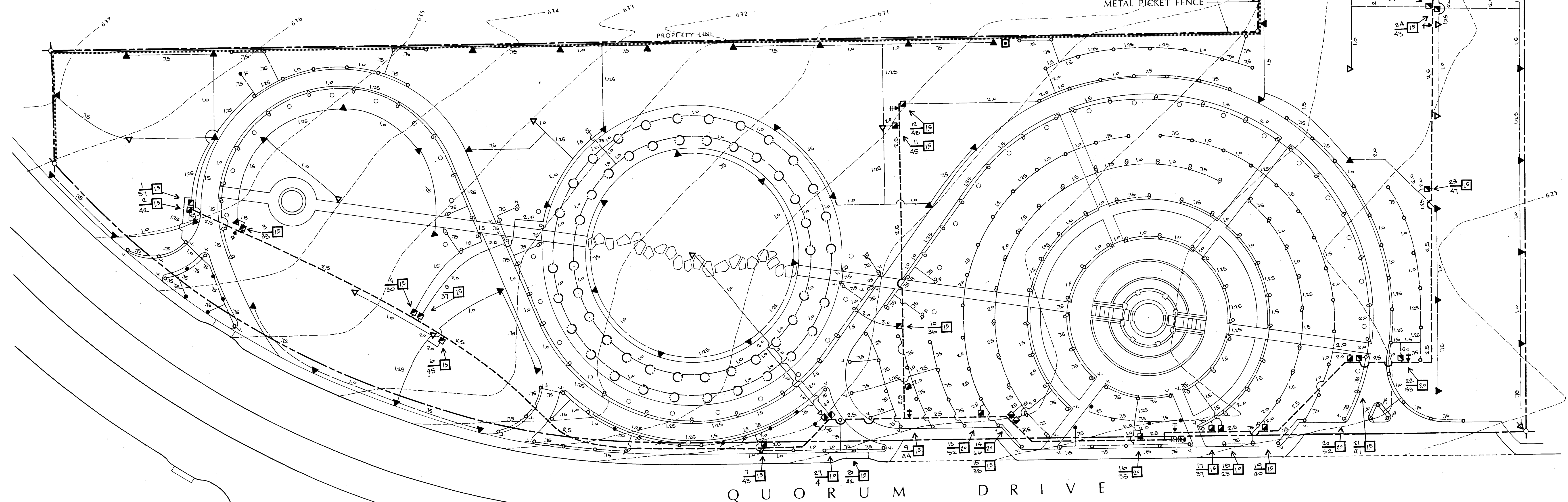
SYSTEM NOTES

1. Refer to technical specifications and details for installation procedures.
2. All base information supplied by the Landscape Architect.
3. Field verify dimensions and static water pressure before trenching. If discrepancies exist, notify the designer before proceeding. If contractor fails to test static pressure, he assumes full responsibility and costs for any system alterations. Static pressure at the point of connection to be 60 psi.
4. A copy of the planting plan shall be with the Irrigation contractor in the field at all times to minimize conflicts and clarify bed areas. Strict compliance with the required trench depth is required. The piping route is diagrammatic in some areas for graphic clarity.
5. The Irrigation contractor is responsible for coordinating and obtaining all permits/fees required to install this system according to code.
6. The Irrigation contractor must coordinate his installation activity and site needs with the General Contractor.
7. Main line pipe and solenoid valve assemblies are to be pressure tested and inspected after joints have cured prior to the total backfilling of trenches.
8. ALL PIPING SHALL BE FLUSHED OF DEBRIS BEFORE INSTALLING HEADS.
9. Set heads and valve boxes level and perpendicular to the finish grade. Compact soil firmly around each head for stability. Adjust each nozzle to operate in the best arc for the site conditions.
10. Position heads away from the hardscape as shown in the details.
11. Spray heads shall be connected to lateral pipe via flexible solvent weldable PVC tubing, use IPS-795 solvent and purple tinted primer. Use of polyethylene nipples not allowed.
12. Operation schedule of the irrigation system shall be determined by the Landscape contractor to protect his plant warranty.
13. All valve wire to be #14 UL-UF single strand copper. No splices shall be buried. Splices shall occur only in valve boxes and made so that the splice can be brought above grade for service. Use Scotch DBY style connectors.
14. Electrical power (120 volt, 20 amp.) serving the controller is to be obtained from the pump vault. Power wiring shall be placed in a conduit and installed per code as part of the Irrigation contractor's responsibility.

IRRIGATION EQUIPMENT LEGEND

- Water meter, 2.0" diameter, Hersey MVR w/stainless steel bolts and brass flanges. Install in a concrete box w/gravel base.
- ⊞ Febco 805Y-8V double check valve assembly with inlet flange attachment using stainless steel bolts and Sch. 80 PVC TDE nipple.
- ⊞ Weathermatic 11000 series solenoid valve. Valve box to have green lid.
- ⊞ Weathermatic 11000 series solenoid valve with the porous pipe bypass/pressure regulator assembly as shown in the details. Valve box to have green lid.
- ⊞ Rainbird #33 quick coupling valve w/key and hose swivel for every two units installed. Valve box to have black lid.
- ⊞ Irritrol MC-30-plus series controller, pedestal mounted. Unit to have a Glen-Hilton temperature sensor and a NCS Rainguard wired according to manufacturer's directions. These sensors may be mounted on a 2" diameter galvanized metal pole where directed in the field.
- ⊞ Hunter PGP turf rotor, full and part circle operation, mount on an o-ring swing joint. Nozzle as follows:
#7 #9
- ▽ Toro 570C-4P-CKVL spray head w/plastic nozzle at 30 psi. Filter screen required:
○ 15 series. ● 12 series.
● 10 series. ■ 8 series.
□ 4-SST
- ▽ Toro 570C-12P-CKVL spray head w/plastic nozzle at 30 psi. Filter screen required. Provide riser extensions where needed.
○ 15 series. ● 10 series.
- NOTE: The following abbreviations may appear on the plan: F-full, H-half, T-third, TT-two thirds, TQ-three quarter, V-variable.
- Aquapore professional tubing, .5 gpm/100 feet used as an individual tree irrigation ring. Install a PVC ball-flush valve as shown on the plans.
- Main line pipe, Schedule 40 PVC, solvent weld type.
- Lateral pipe, Schedule 40 PVC, solvent weld type.
- ⊞ Controller station assigned (num).
- ⊞ Solenoid valve size, diameter.
- ⊞ GPM flow through valve.

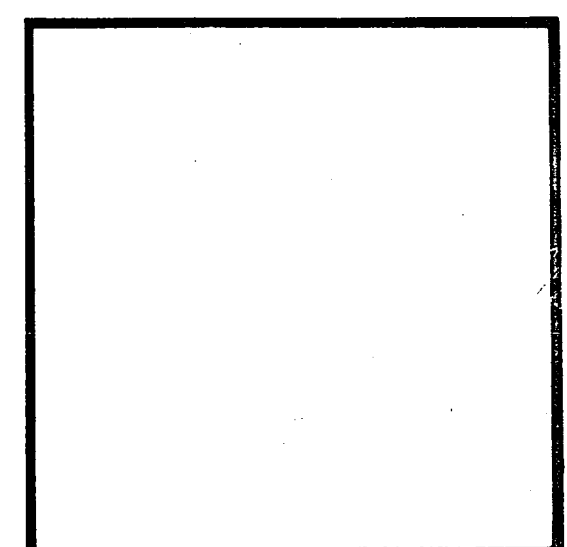
"Irrigation Contractor to include in his bid, as an alternate, the supply and installation of an Irr-Trol RVC-TC36 package."



S I T E P L A N

IRRIGATION PLANS

QUORUM PARK
ADDISON, TEXAS



PRELIMINARY
ISSUE DATE 29 JAN 1990
REVISIONS

PROJECT NO. 88019
DRAWN BY SG
CHECKED BY
SCALE 1" = 20' 0"
SHEET NO.

IR-1